

VNY Vision Study

Citizens Advisory Council

May 2, 2023



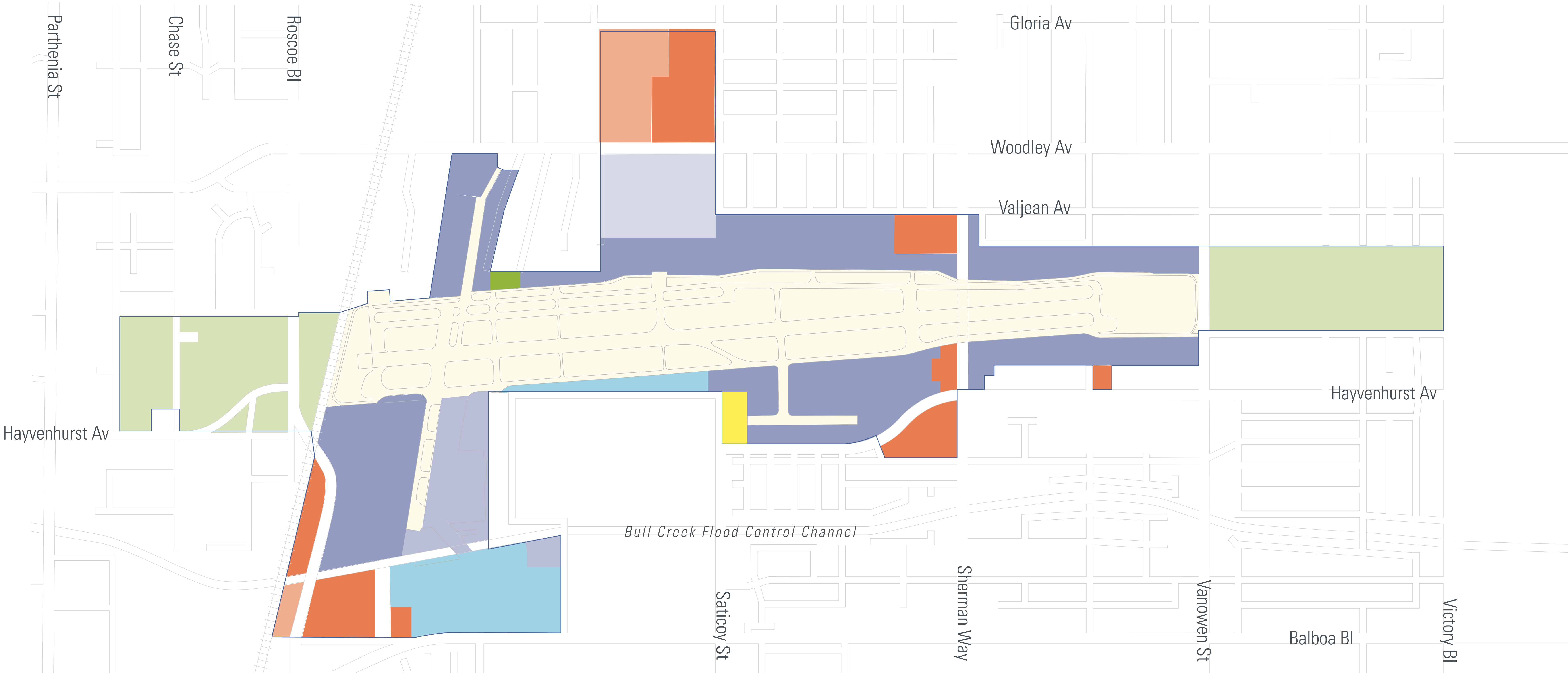
2006
Van Nuys Airport Plan

Current VNY Airport Plan Land Use Map

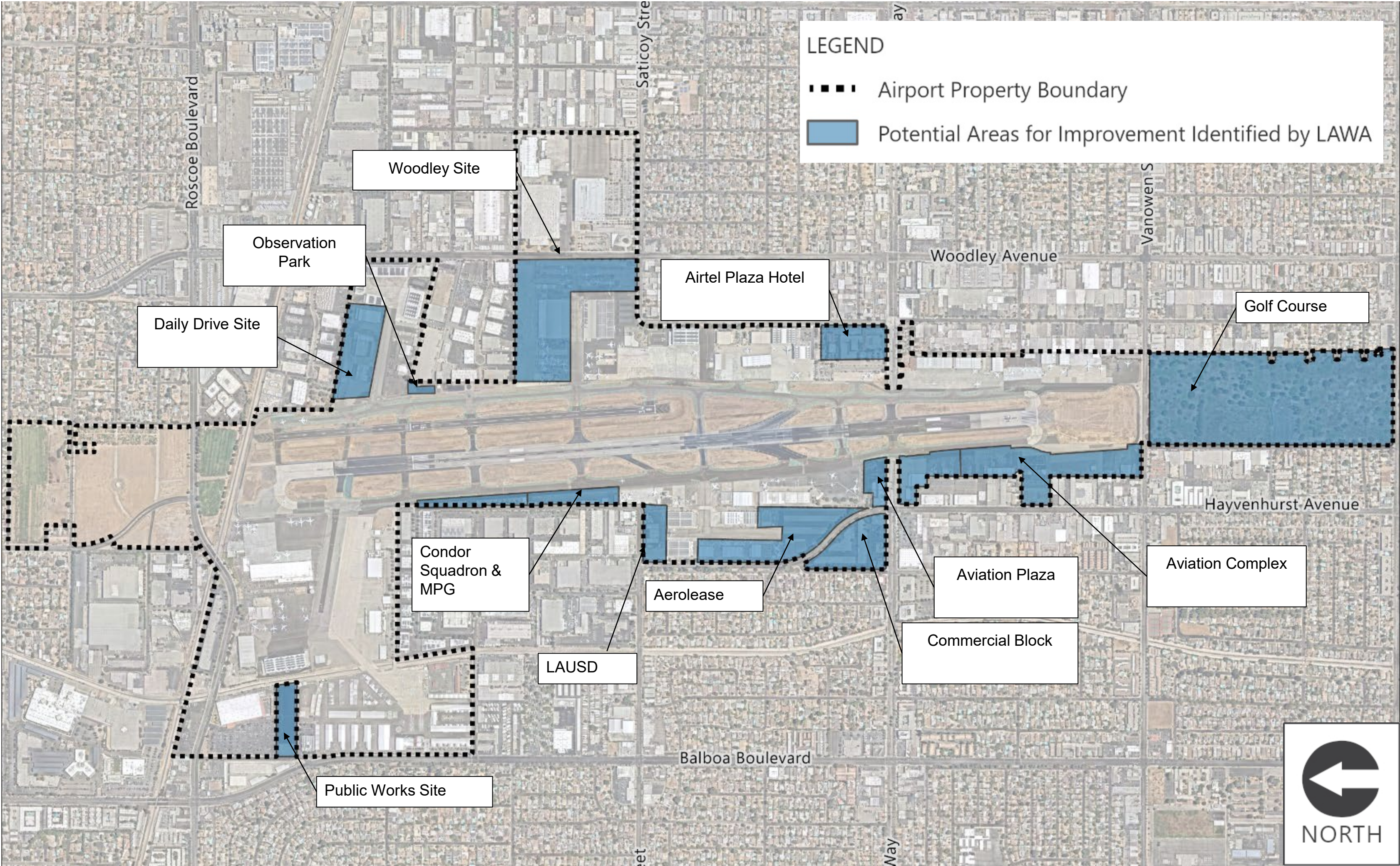
- Runway area
- Approach area
- Aviation area
- Special aviation area
- Aviation area - Propeller aircraft
- Aviation related area
- Public Facility area
- Park/Observation area
- Airport Commercial
- Airport Light industrial
- Airport boundary

Airport land uses must conform to the Federal 1990 Airport Noise Control and Capacity Act
Prepared by City of Los Angeles Planning Department • Graphic Services Section • November, 2005

◀ N Not to scale

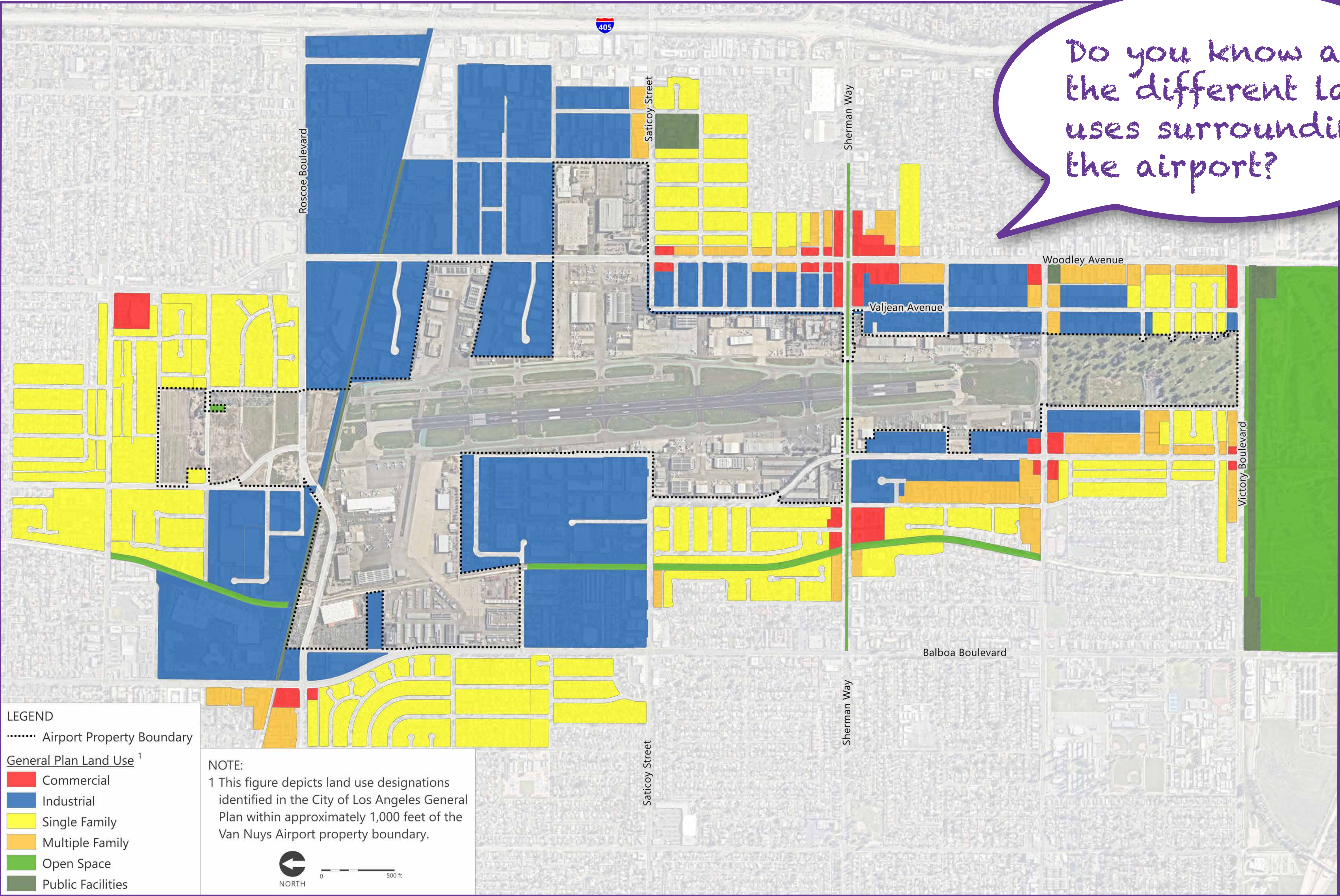


Concept Development – LAWA-Identified Opportunity Sites

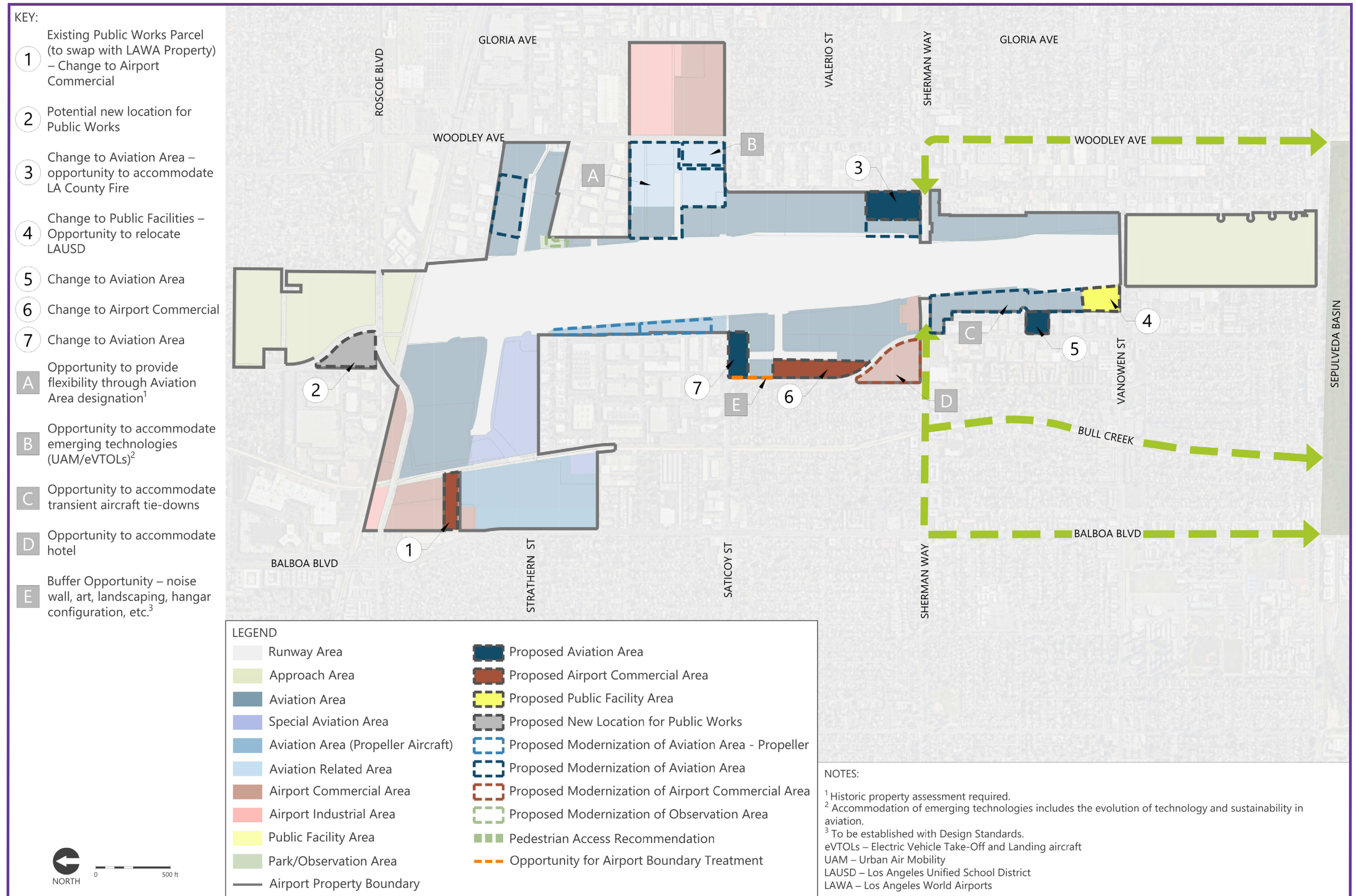


Not to Scale – for visual reference only.
SOURCES: Nearmap, August 2022 (aerial photography – for visual reference only, may not be to scale); Los Angeles World Airports, January 2023 (leases); Los Angeles World Airports, *Airport Layout Plan, Van Nuys Airport*, June 2021 (Airport property boundary).
Path: P:\GIS\Projects\VN\IMXD\VN\VisionStudyFigures_20211230 – VN\Vision_PPT_PotentialAreasUnderConsideration_20230223.aprx

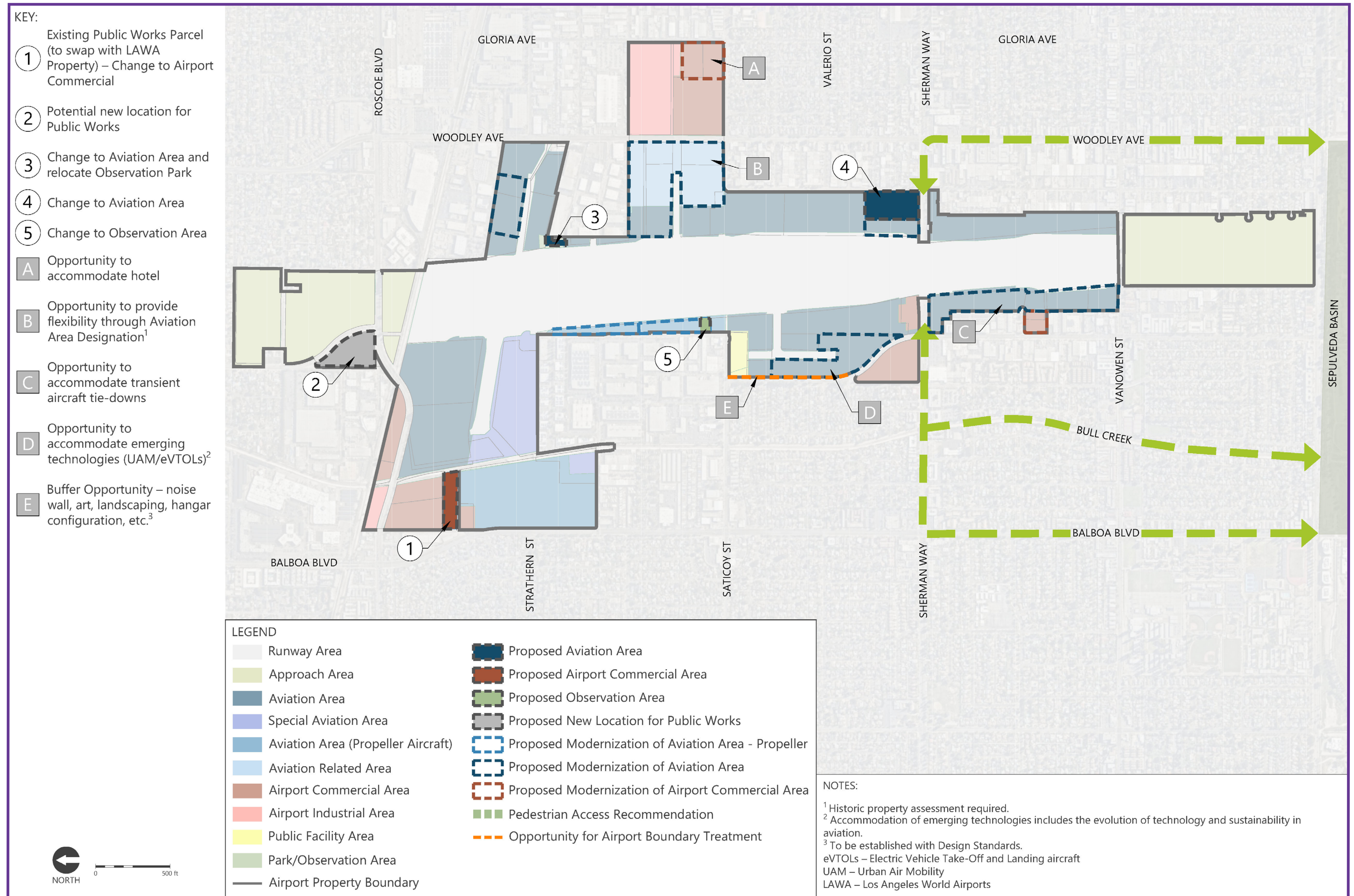
Community Plan Land Use Map



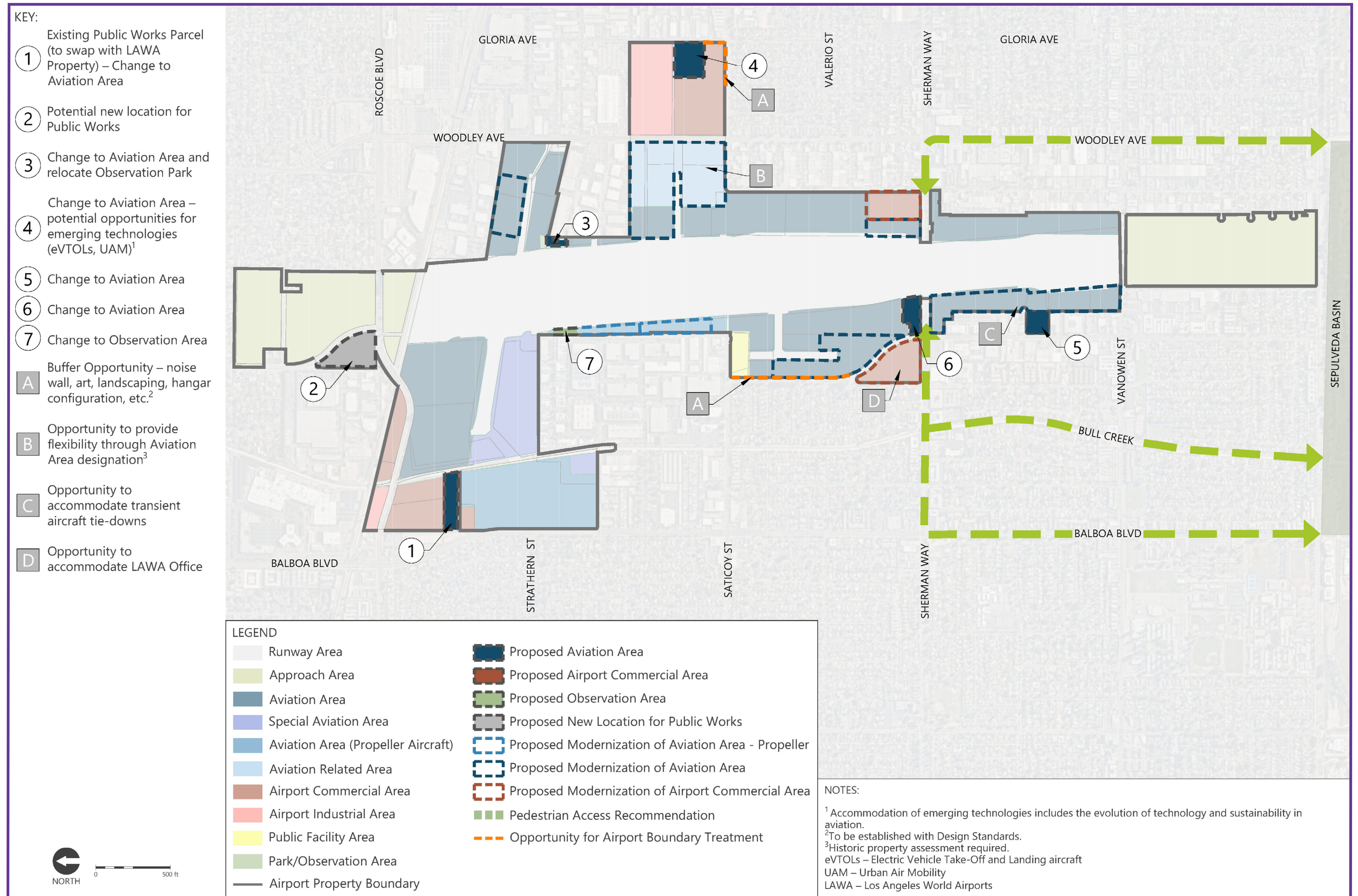
Alternative A



Alternative B



Alternative C



Next Steps for Vision Study



www.iflyvny.com/vision-study



Project Initiation Data
Collection &
Inventory of
Existing Conditions



Introduction &
Listening



Consult & Share
Vision Study Land
Use Alternatives



Select Vision Study
Preferred Land Use
Alternative

WE ARE HERE



Continue Collaboration
with Los Angeles City
Planning to Draft VNY
Specific Plan and/or
other Planning Tools



Consult & Share

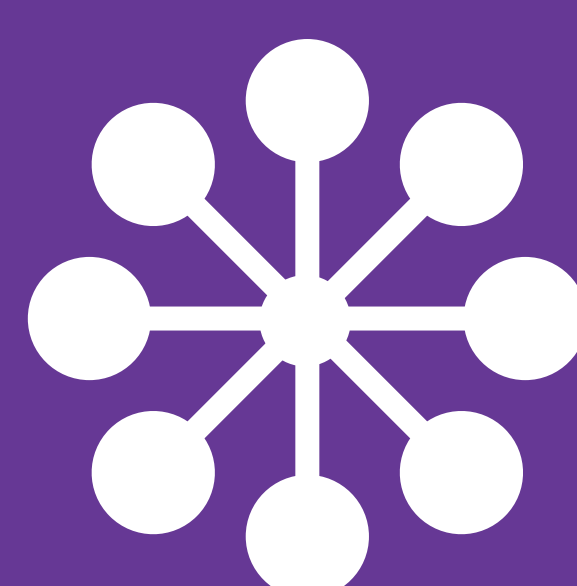


Finalize & Adopt
VNY Specific Plan
and/or other
Planning Tools

VISION STUDY IS THE FIRST STEP FOR FUTURE PLANNING...



Airport Land
Use Map



Specific Plan
or other Planning Tool



Design
Guidelines



Environmental
Review