

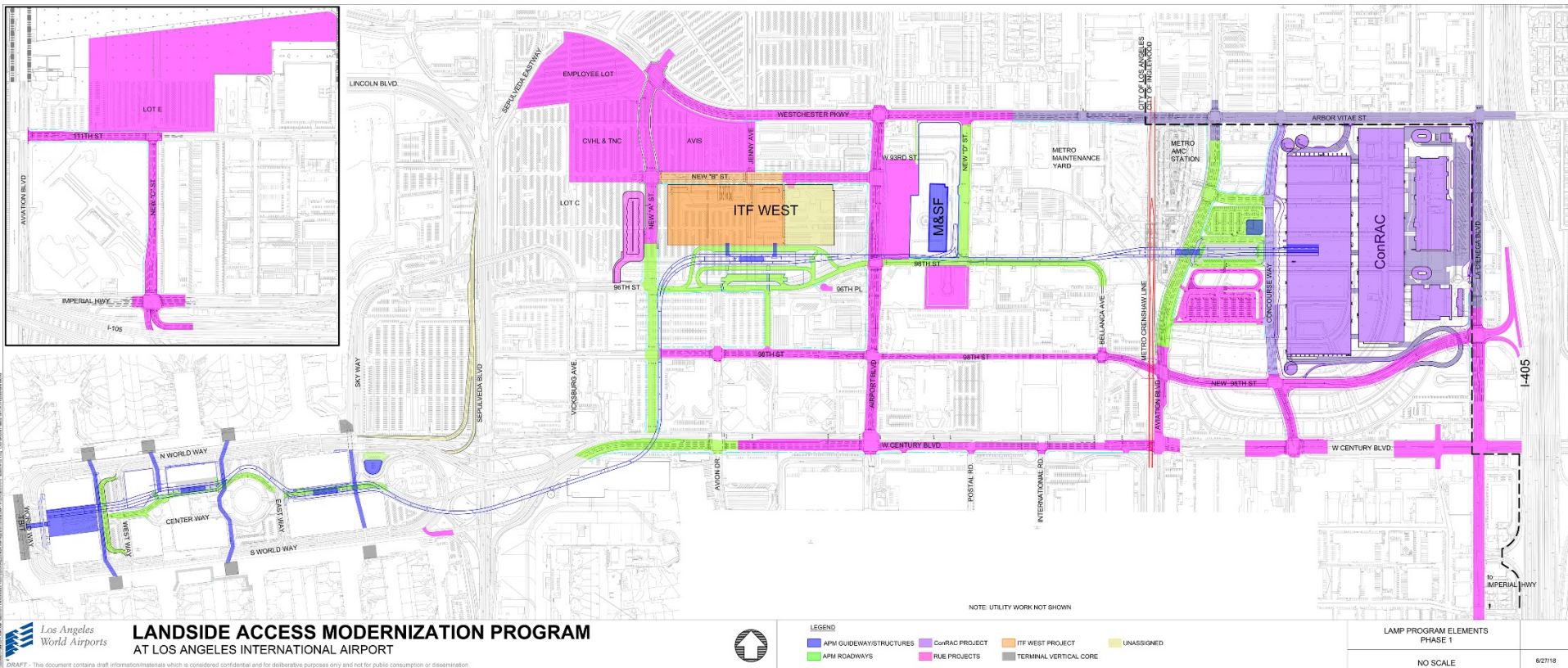


## Landside Access Modernization Program (LAMP)



# LAMP Components

- Automated People Mover (APM)
- Consolidated Rent-a-Car (ConRAC) Facility
- Intermodal Transportation Facility – West (ITF-W)
- Connection to Metro light rail
- Roadway improvements



# Automated People Mover (APM)

Brings convenience, reliability and time certain access to terminals

- Developer: LINXS
- Length: 2.25 mile elevated guideway
- Capacity of Train: 200 passengers per train with luggage
- Ridership Capacity: 10,000 passengers per hour, 87.7M per year
- Ride Duration: 10 minutes end to end
- Frequency: Every two minutes
- Maximum Speed of Train: 47mph
- Cost to Ride: Free
- Seats Per Train: 12
- Public/Private Partnership (P3)





# APM Schedule

Early Works Agreement  
(Design, Engineering, Enabling)  
Feb. 2018

BOAC/City Council  
Approval  
April 2018

Official Ground  
Breaking  
March 2019

Heavy  
Construction  
2019-2022

Testing  
Late 2022-  
March 2023

Operational  
March 2023





# APM on Guideway





# APM Train Interior





# Aerial View of APM





# West APM Station





# Consolidated Rent-A-Car (ConRAC) Facility

## Facility Features

- Developer: LA Gateway Partners
- 5.3 million square feet
- 6,600 ready/return spaces
- 10,000 idle vehicle storage spaces
- 1,100 rental car employee spaces
- Quick Turn Around (QTA) facilities
  - Car wash
  - Fueling
  - Light maintenance (oil change)
- Direct access to the 405 freeway
- P3 – Design-Build-Finance-Operate-Maintain (DBFOM) contract



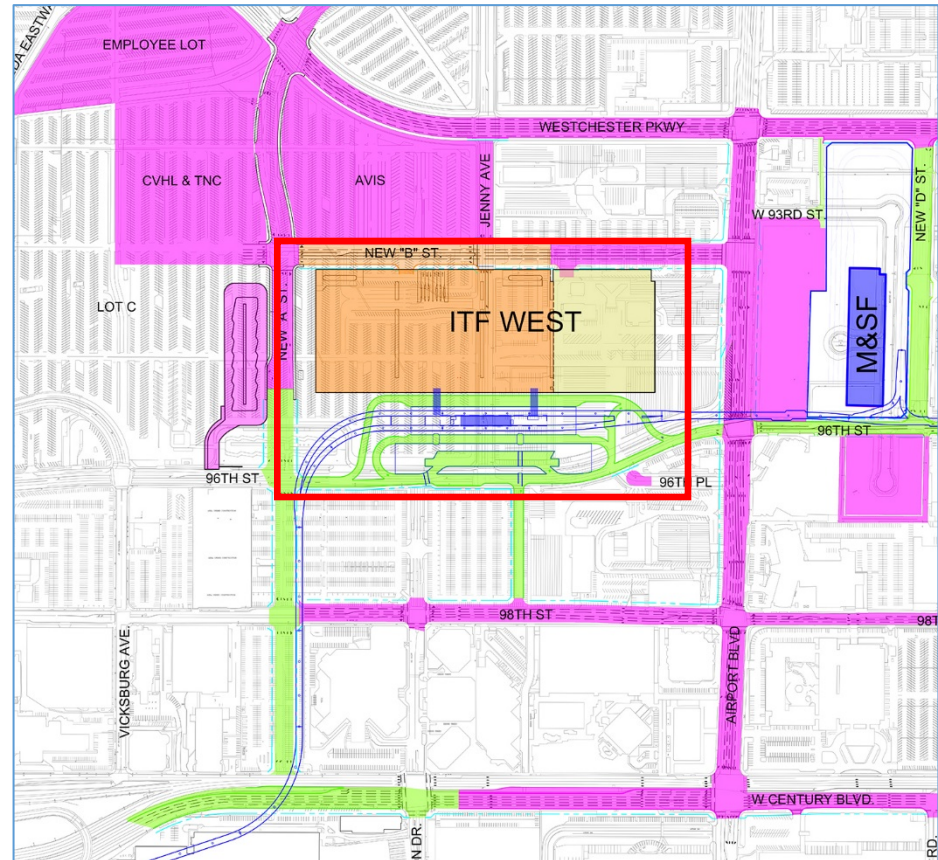
# ConRAC Schedule





# Intermodal Transportation Facility – West (ITF-W)

- Breaks ground in Q1 2019
- Opens in 2021
  - Shuttles will service to/from terminals until APM is online
- 4,700 parking spaces
  - Short & long term parking
  - E/V charging stations
- LAWA Security & Badging Office
- Concession space
- Design-Build contract
  - Swinerton Builders



# Airport Metro Connector (AMC) Station

## Schedule for Crenshaw/LAX & Green Line

- Opens 2020
- Passengers to take buses in to LAX from the Century Blvd. and Aviation Blvd. station until APM is online and AMC station opens in 2023





# Passenger Access Facilities (Cores)

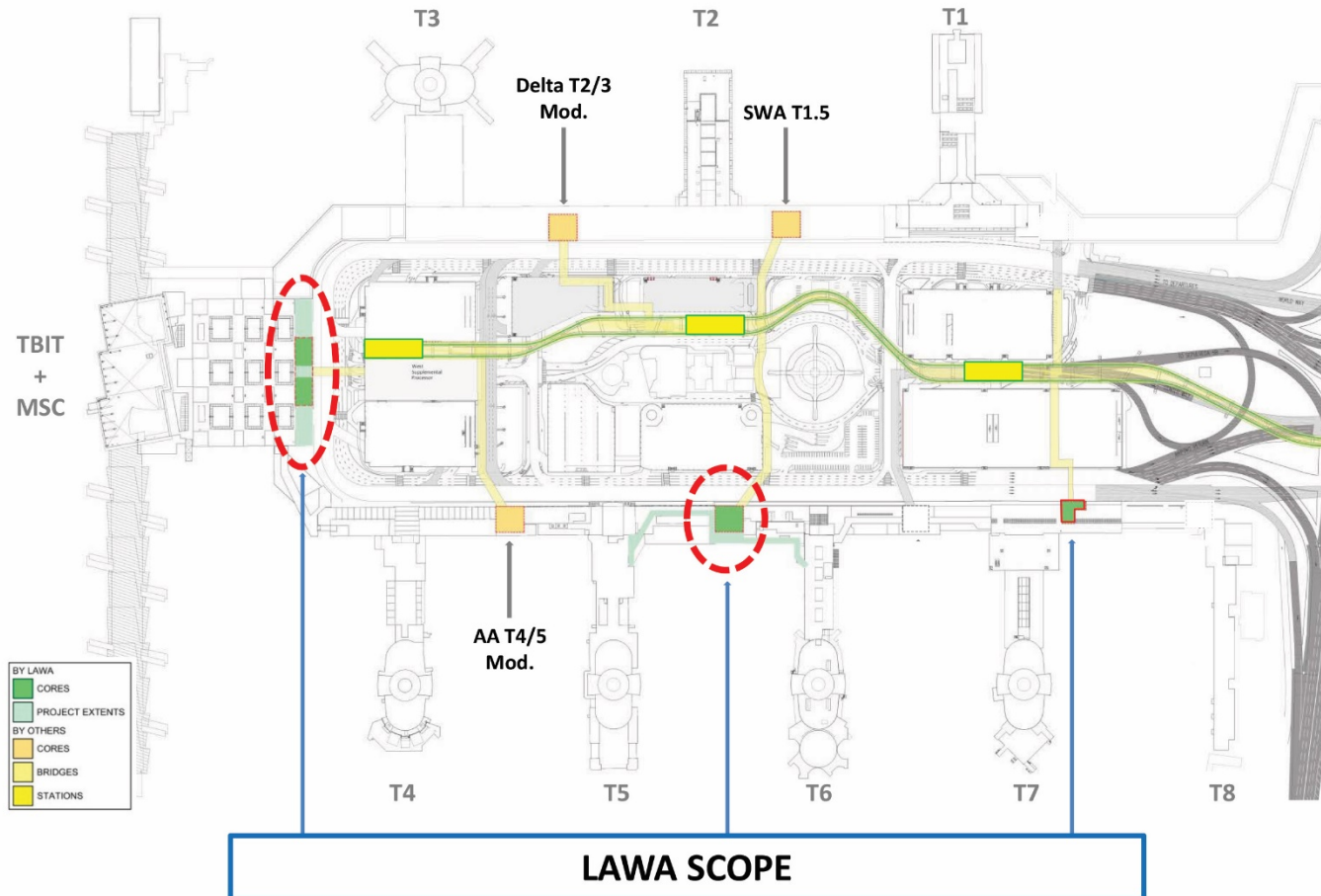
What a Passenger Access Facility Does:

- Connect terminals to APM
- Vertical circulation within terminal
  - Connect passengers to ticketing lobby, baggage claim and security checkpoints
  - Connect deplaning passengers without baggage directly to APM
- Accommodate possible baggage drop at concourse level



# Passenger Access Facilities (Cores)

- Terminal 1.5 – Southwest
- Terminals 4/5 – American
- Terminals 2/3 – Delta
- Terminal 5.5/TBIT - LAWA





# CTA Illustration for Summer 2019

Photo Illustration





[www.FlyLAX.com/ConnectingLAX](http://www.FlyLAX.com/ConnectingLAX)

