



Van Nuys
Los Angeles World Airports

VNY Southerly Jet Departures



VNY CAC Meeting
Environmental Ad Hoc Committee
November 6, 2018

- **FAA SoCal Metroplex timeline**
- **Published FAA Procedures**
- **Navigation Points (2.2 DME and PPRRY)**
- **ANOMS Flight Track Density Plots**
- **ANOMS Flight Track Gate Analysis**
- **Summary**

FAA SoCal Metroplex Timeline

Mar/Apr
2017

FAA Metroplex RNAV departure
procedures published for VNY
(ROSCOE ONE, HARYS ONE,
WLKKR ONE)

Aug
2017

“Standard Operating Procedures”
(SOP) issued by FAA to address Early
Turns due to new RNAV departures

May
2018

Revised RNAV procedures issued by
FAA for ROSCOE TWO, HARYS TWO,
WLKKR THREE

Conventional Procedures

(Uses “2.2 DME” as reference to turn east or west)

- CANOGA TWO
- NEWHALL NINE
- ADAMM TWO

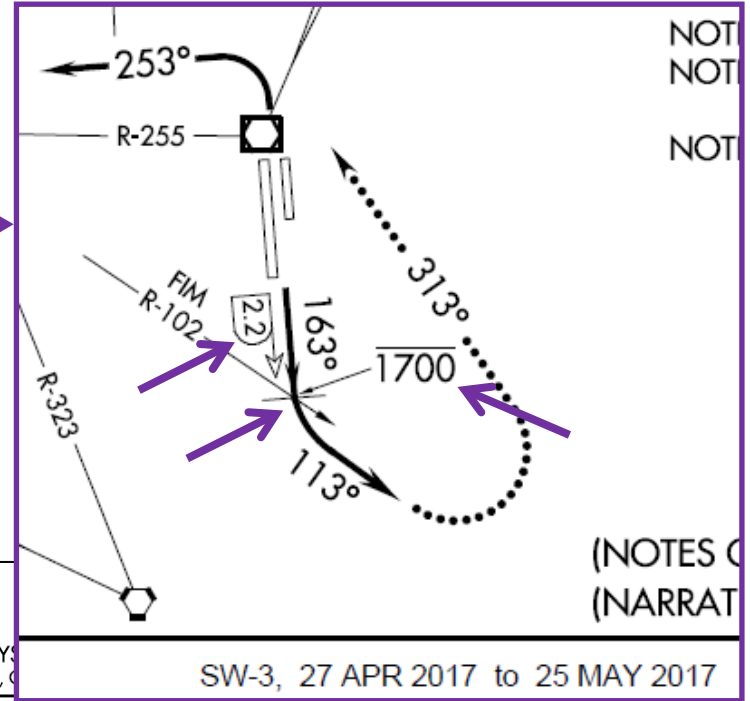
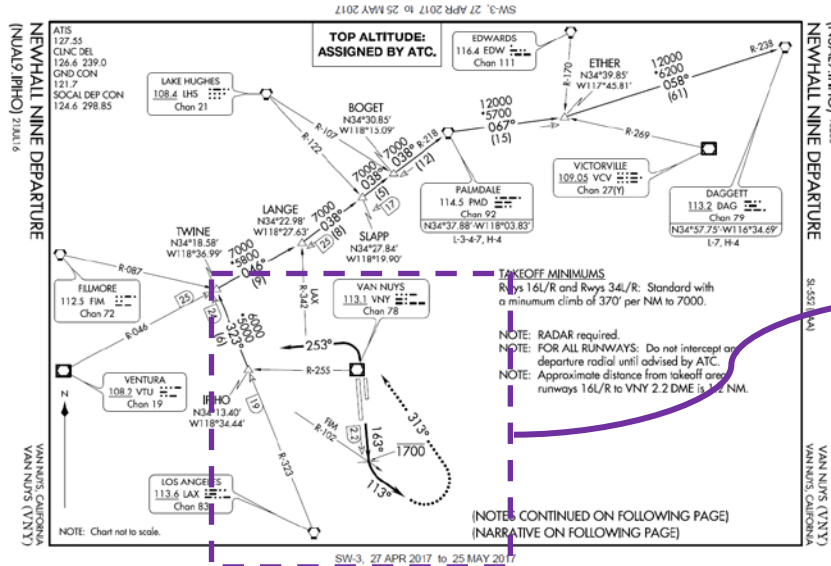
RNAV Procedures

(Uses waypoint PPRRY as reference to turn east or west)

- ROSCOE TWO
- HARYS TWO
- WLKKR THREE

Conventional Departure Procedures

NEWHALL NINE



(NUAL9.IPHO) 16203
NEWHALL NINE DEPARTURE

SL-552 (FAA)

VAN NUYS
VAN NUYS, CA

SW-3, 27 APR 2017 to 25 MAY 2017

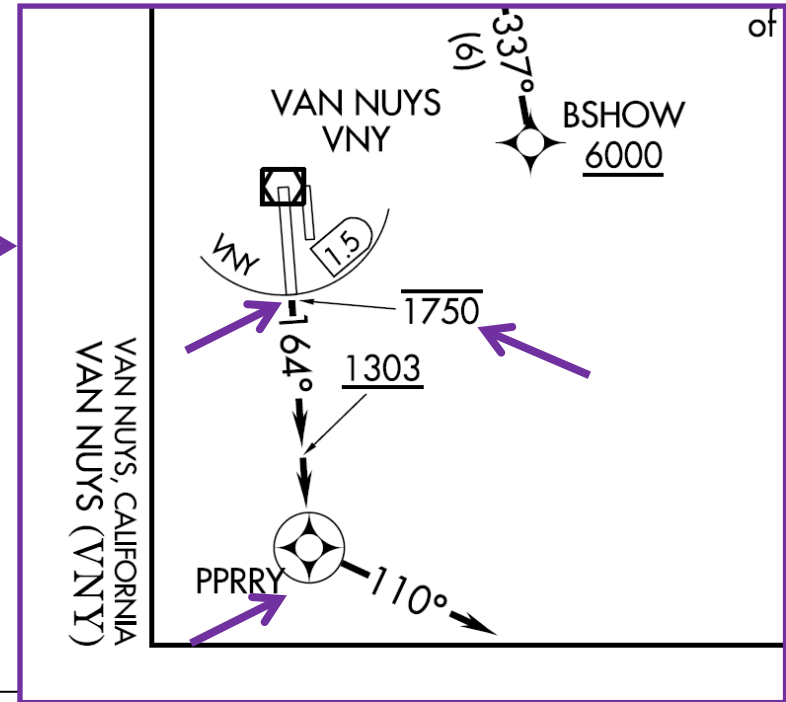
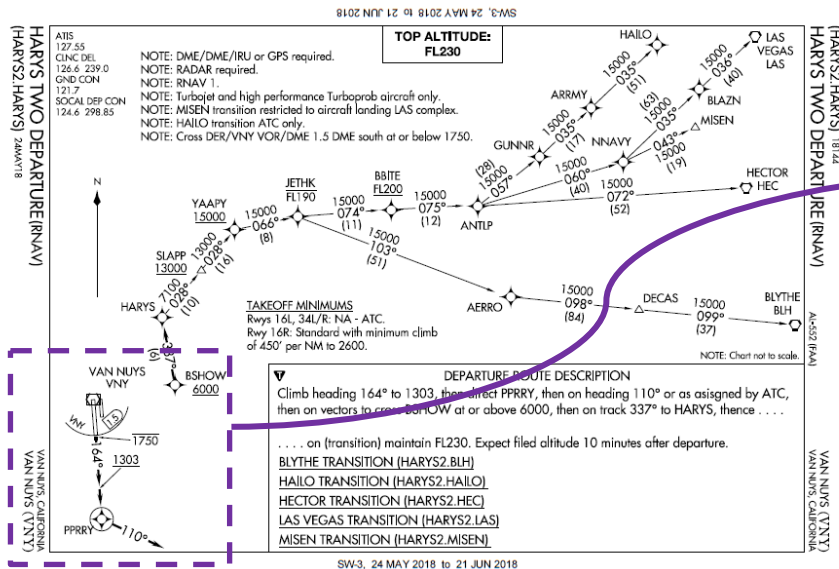


DEPARTURE ROUTE DESCRIPTION

- * TAKEOFF RUNWAYS 16L/R: Climb on heading 163°, cross FIM R-102 or VNY VOR/DME 2.2 DME at or below 1700, then climbing left turn heading 113°. To assigned altitude, thence . . .

RNAV Departure Procedures

HARYS TWO



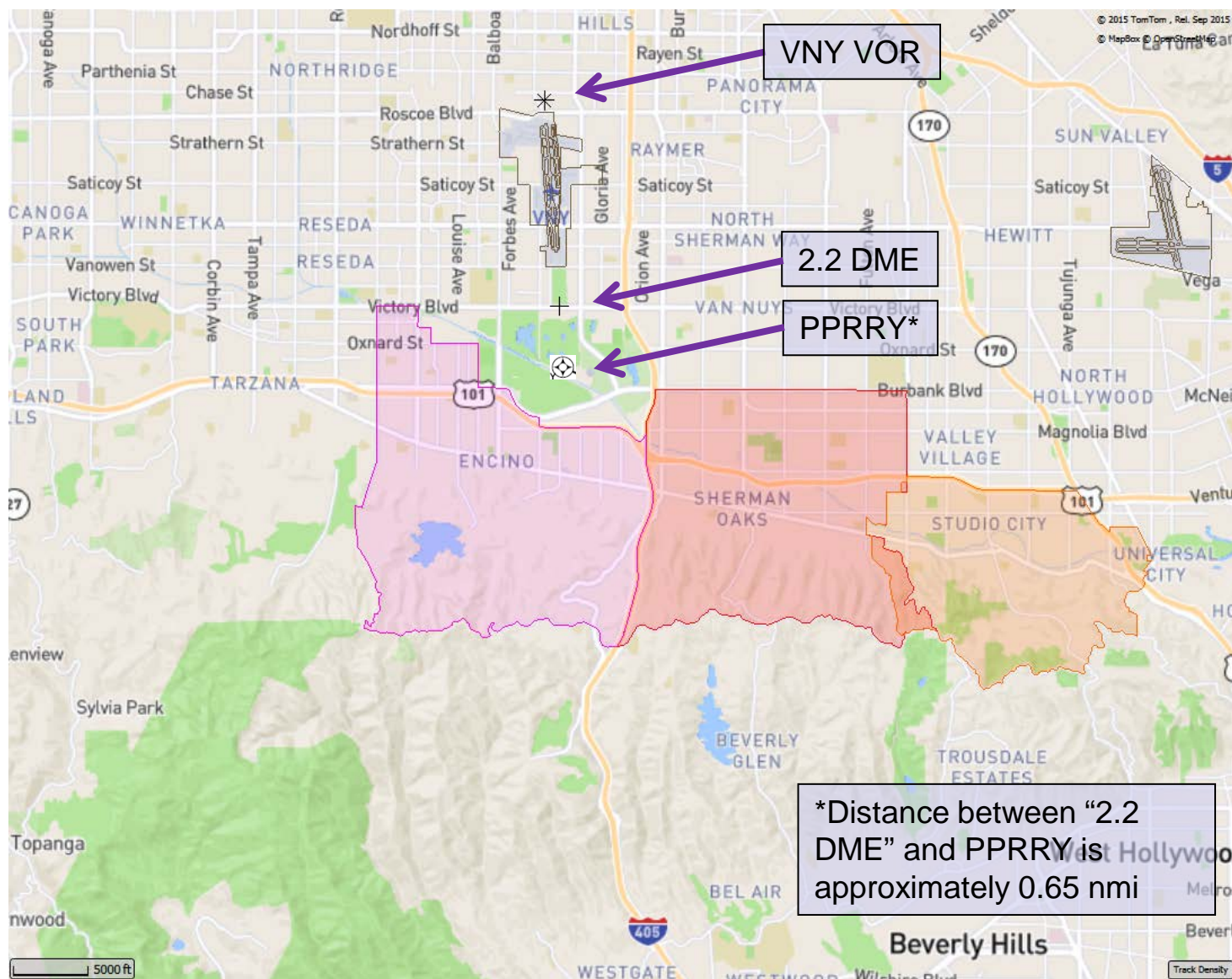
DEPARTURE ROUTE DESCRIPTION

* Climb heading 164° to 1303, then direct PPRRY, then on heading 110° or as assigned by ATC, then on vectors to cross BSHOW at or above 6000, then on track 337° to HARYS, thence . . .
. . . on (transition) maintain FL230. Expect filed altitude 10 minutes after departure.

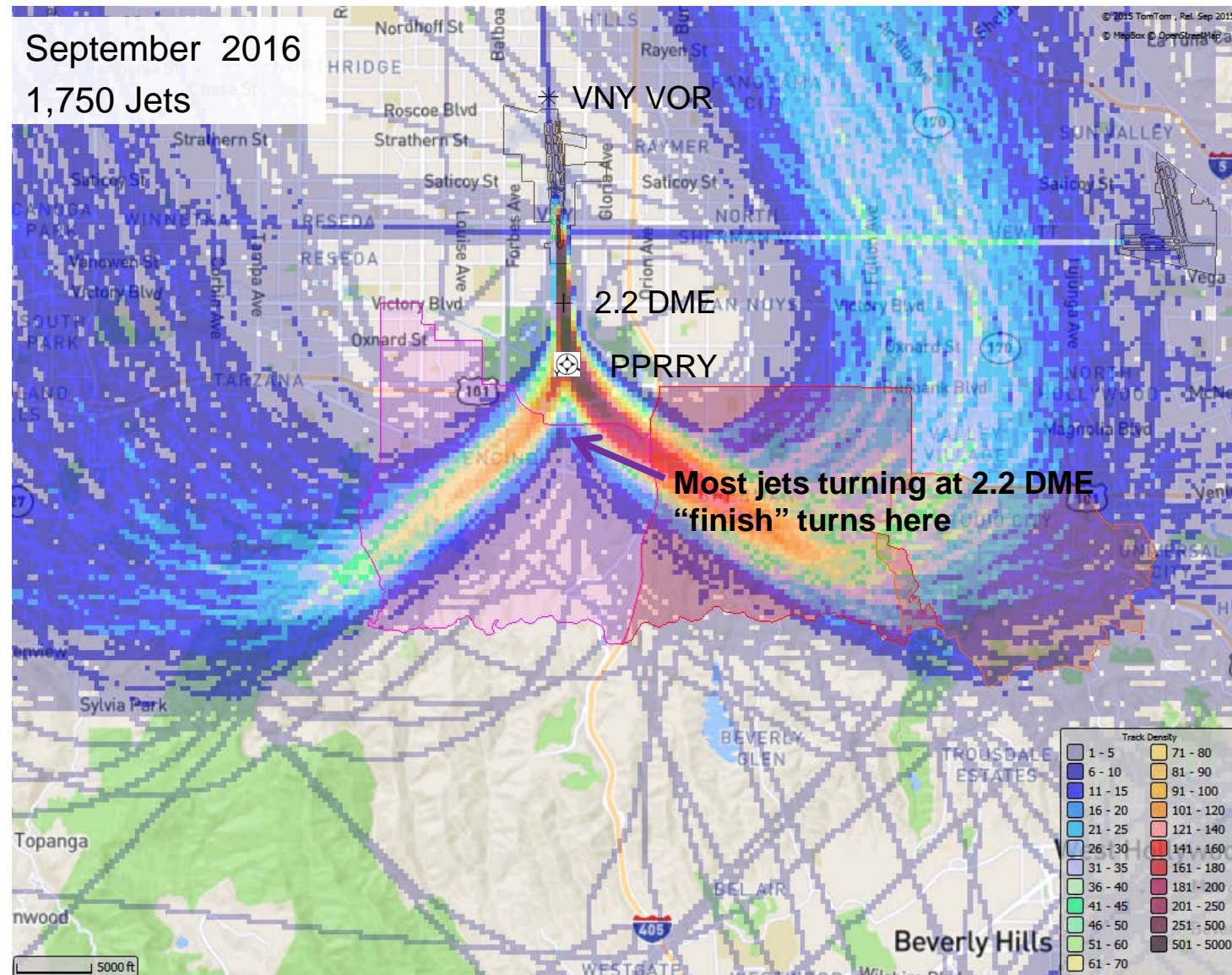
BLYTHE TRANSITION (HARYS2:BLH)

VAN
VAN

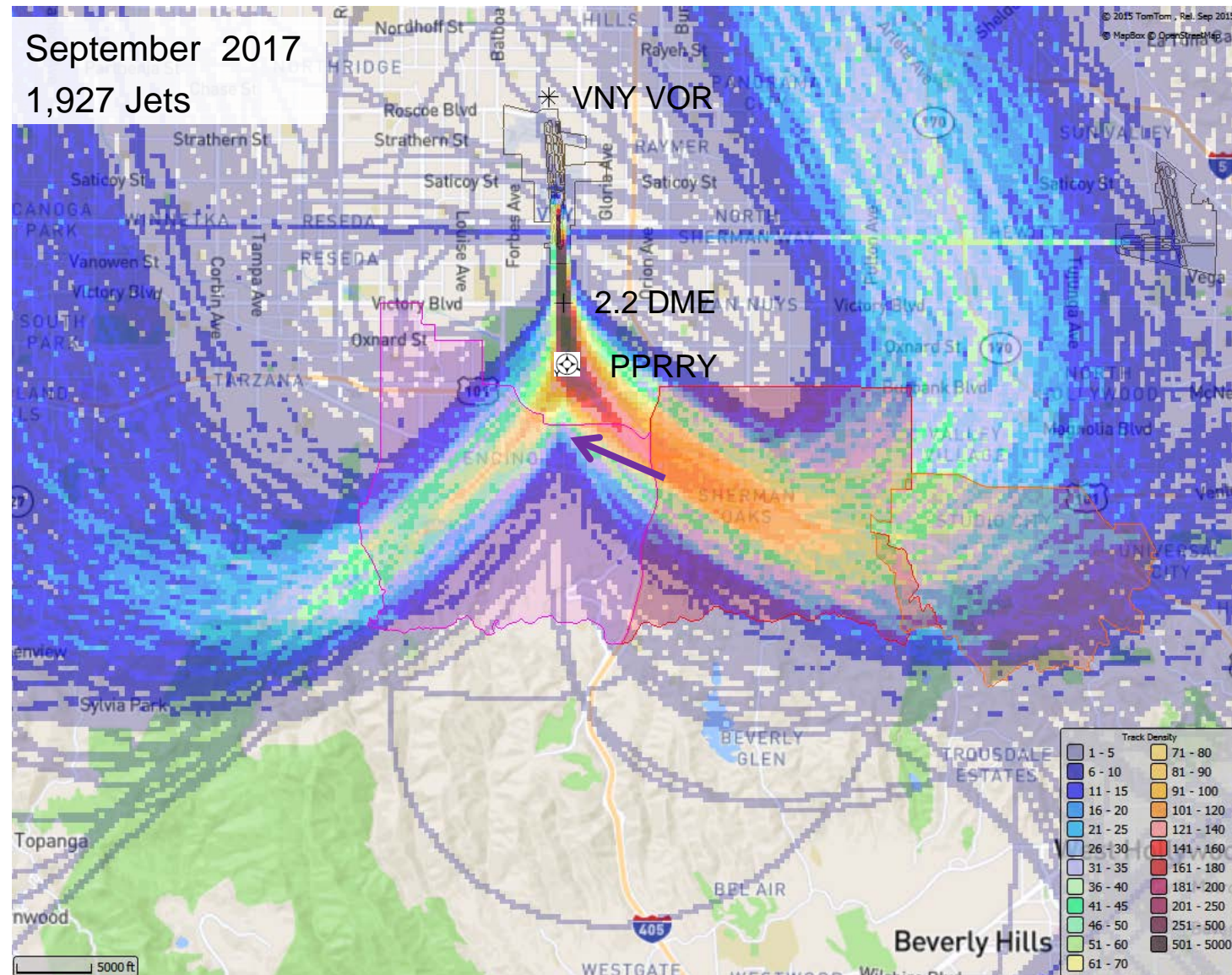
Navigation Points - 2.2 DME and PPRRY



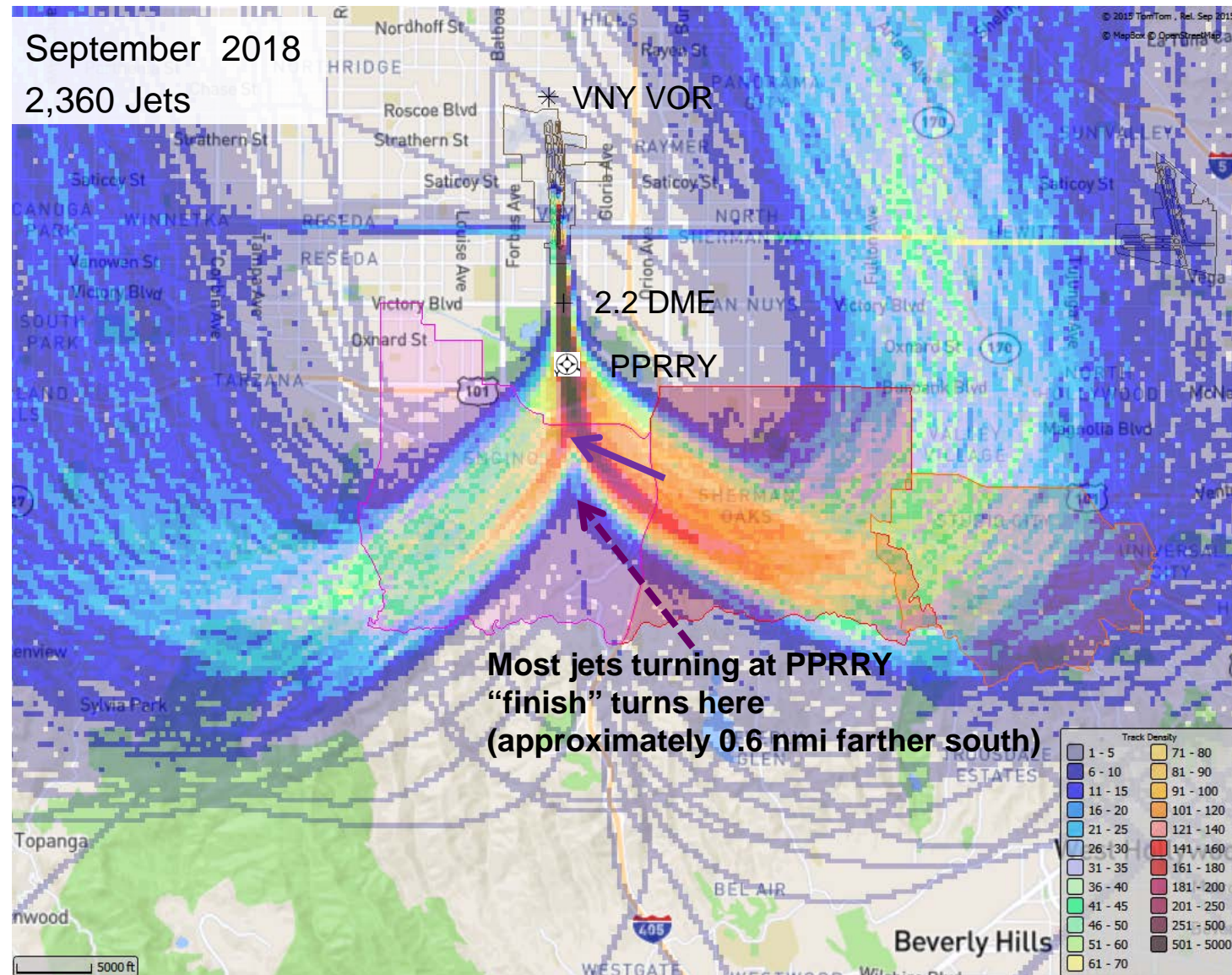
ANOMS Flight Track Density Analysis



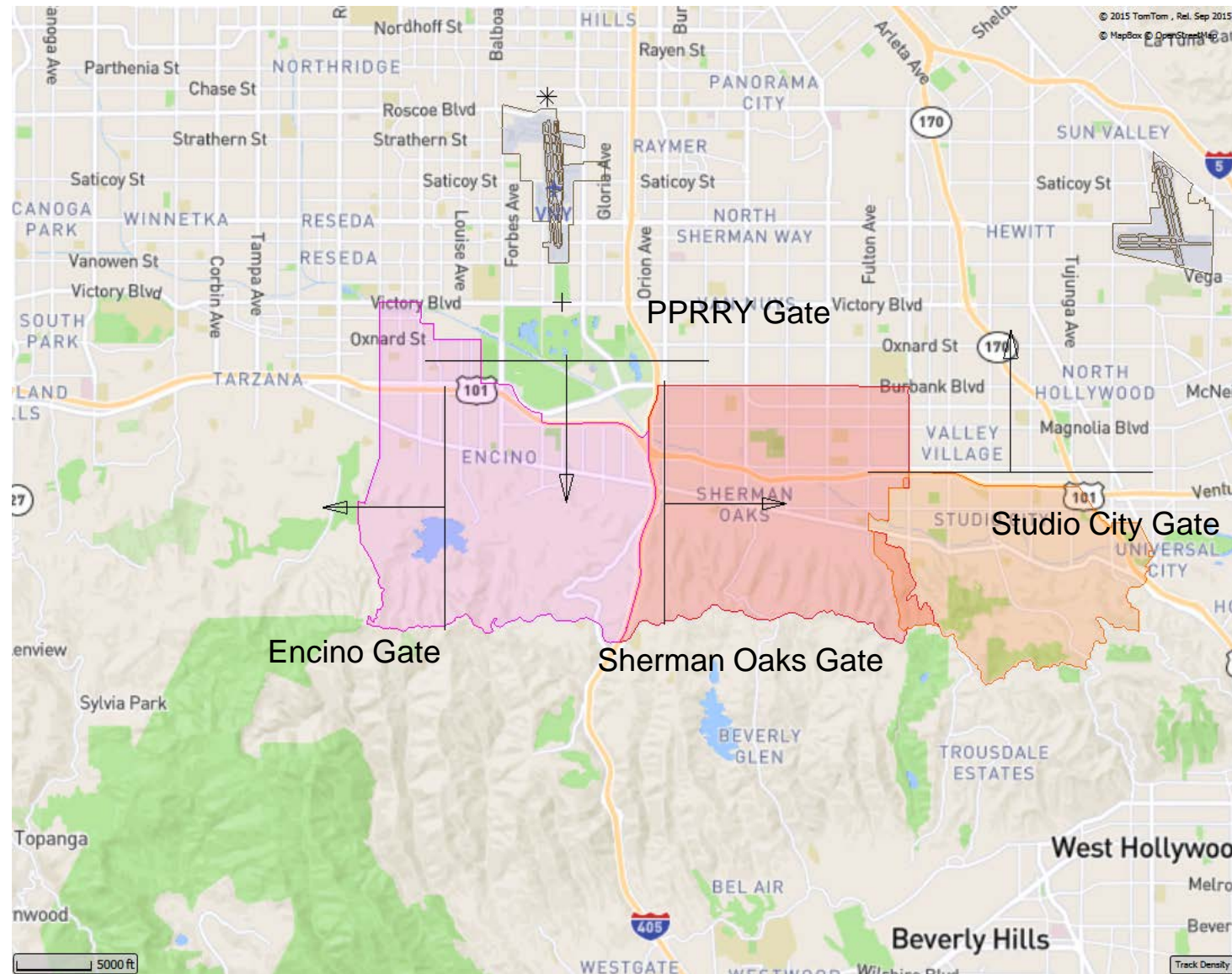
ANOMS Flight Track Density Analysis



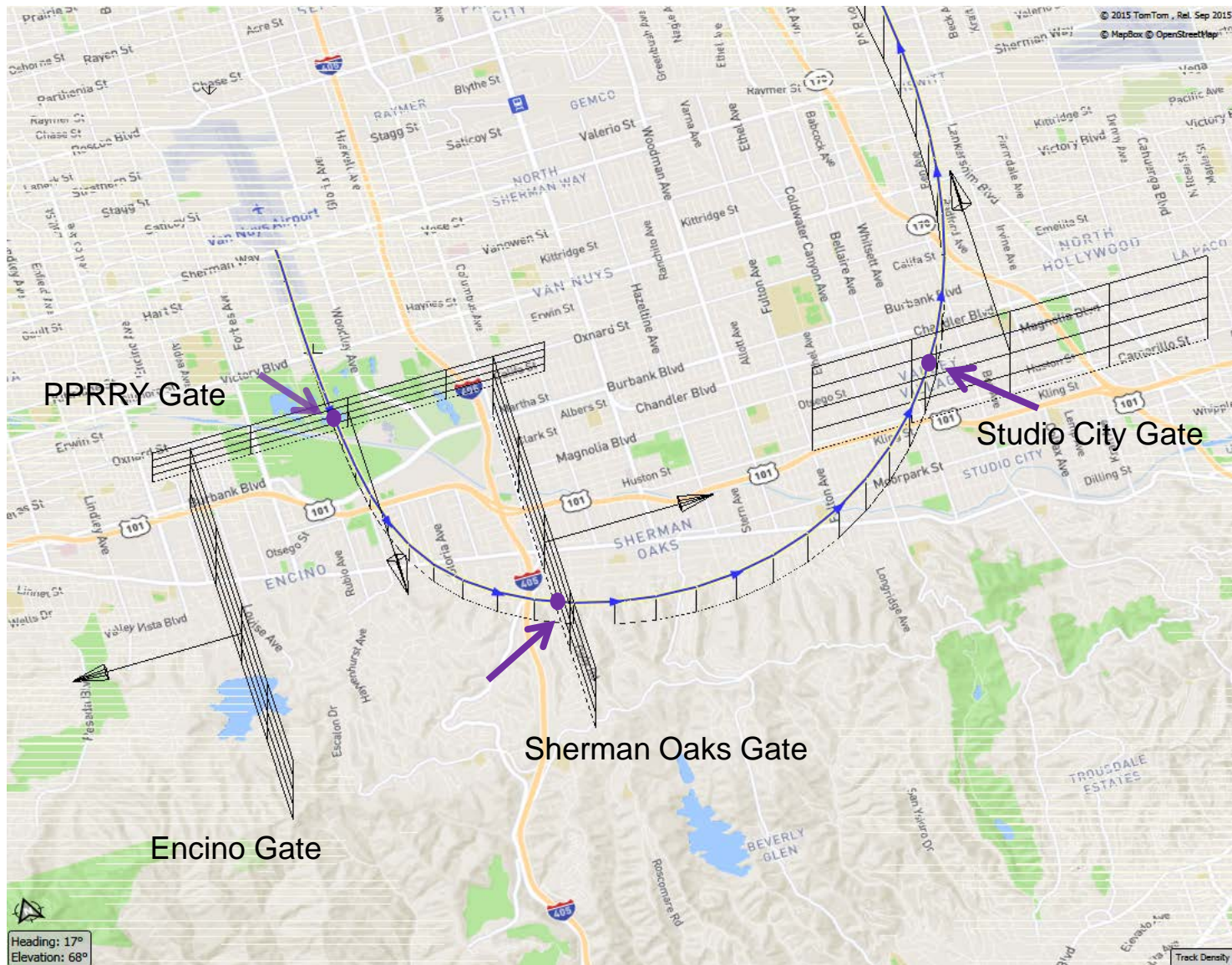
ANOMS Flight Track Density Analysis



ANOMS “Gate” Analysis



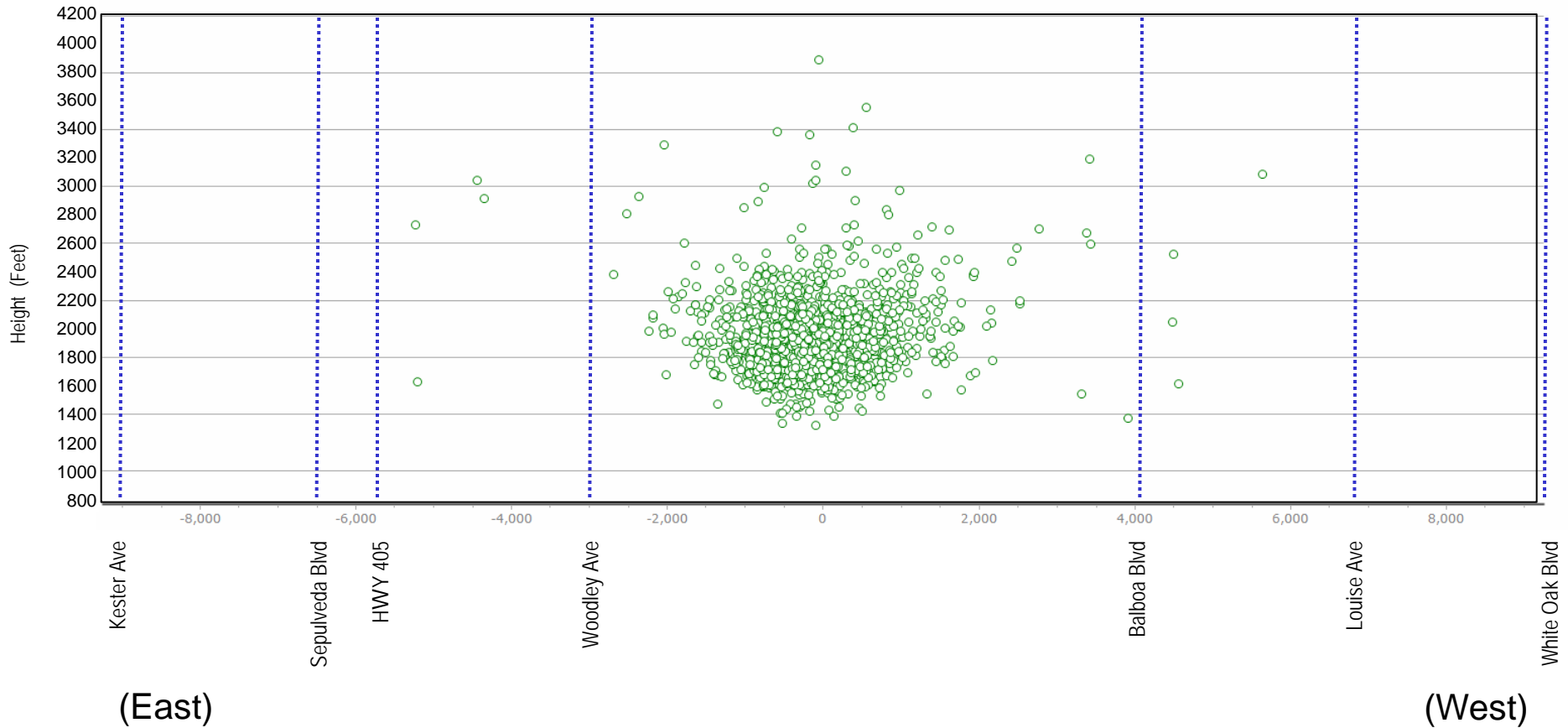
ANOMS “Gate” Analysis



ANOMS Gate Penetration

PPRRY– September 2016

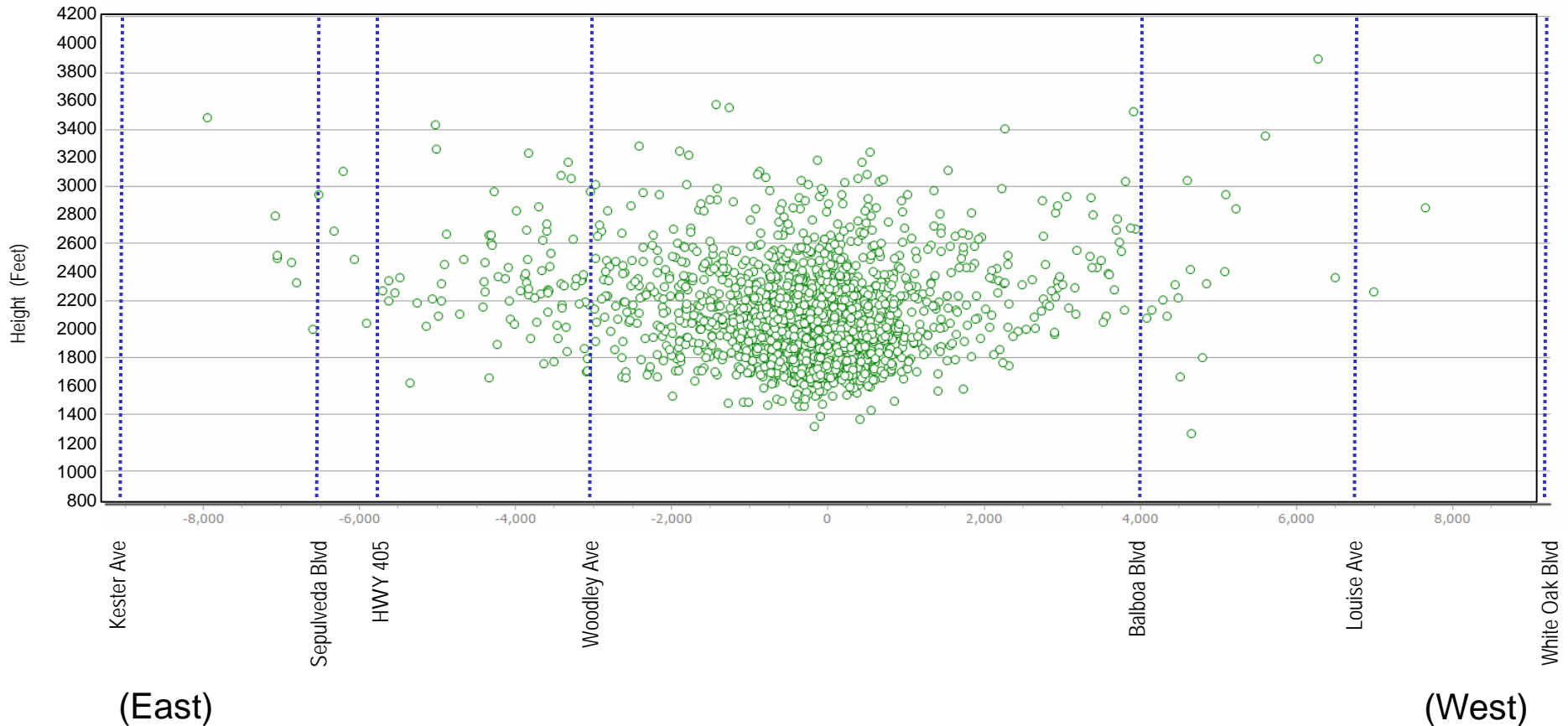
Number of Jets = 1728
Avg Altitude (MSL) = 1921.4



ANOMS Gate Penetration

PPRRY– September 2017

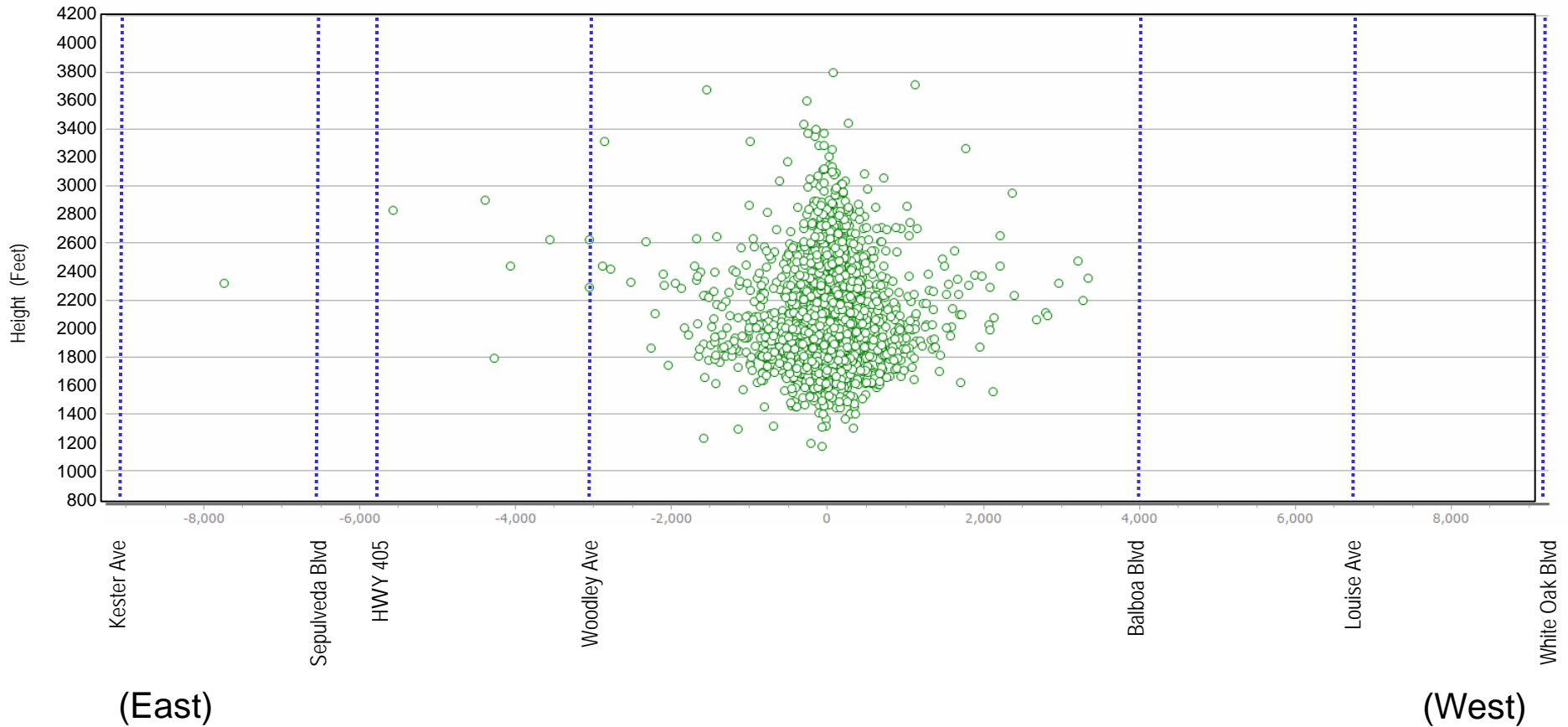
Number of Jets = 1894
Avg Altitude (MSL) = 2099.1



ANOMS Gate Penetration

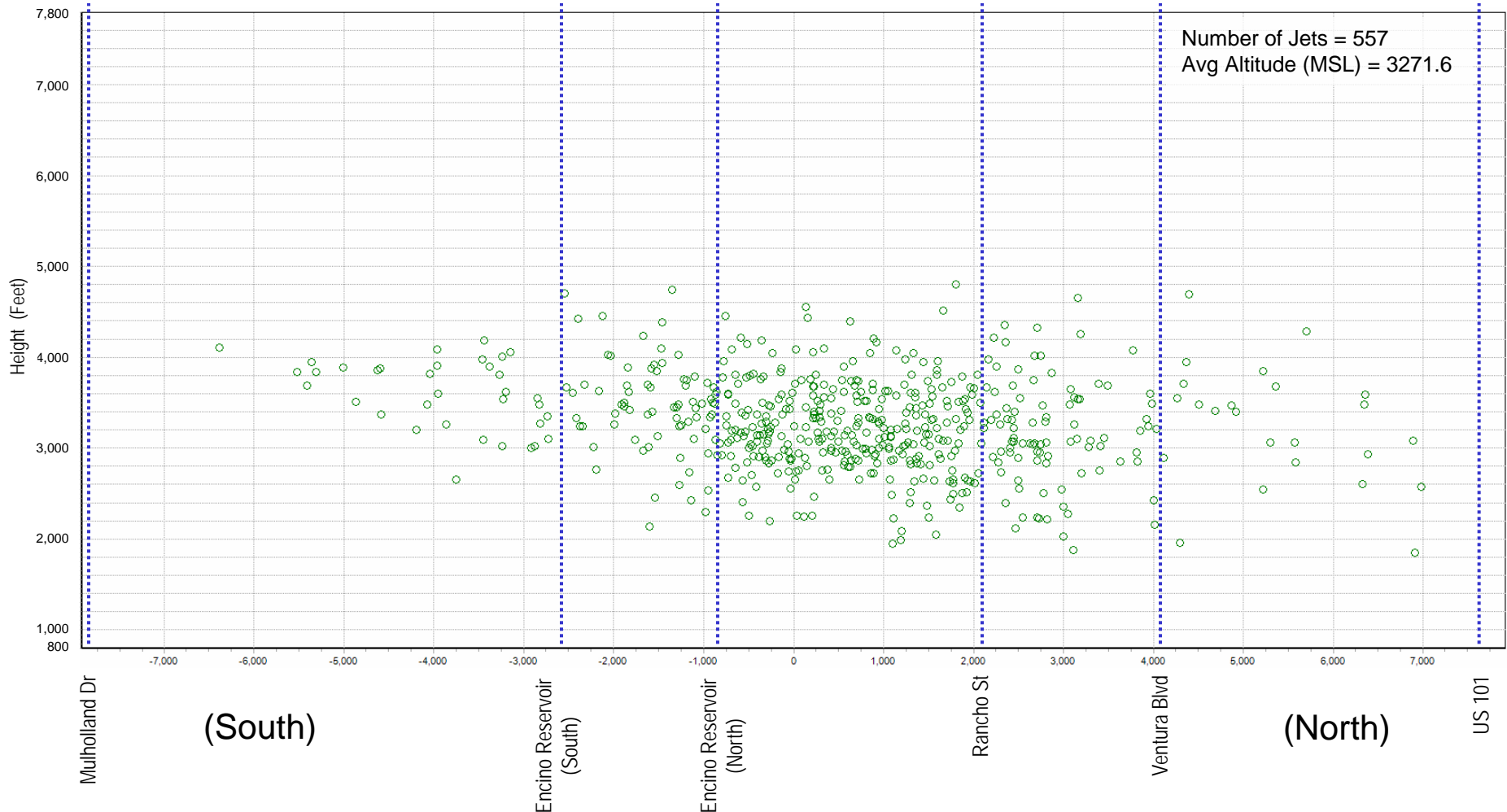
PPRRY– September 2018

Number of Jets = 2344
Avg Altitude (MSL) = 2065.9



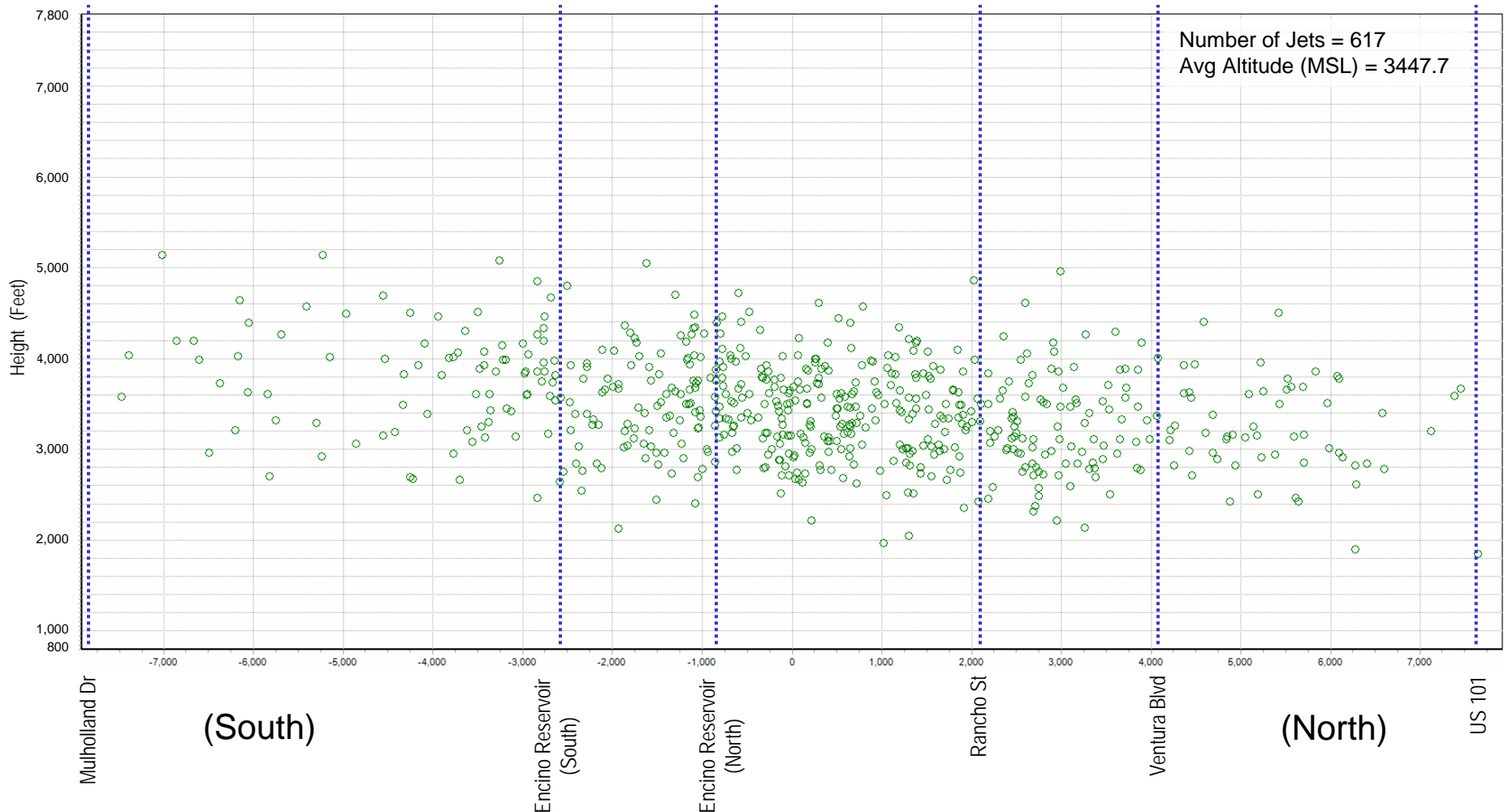
ANOMS Gate Penetration

Encino Gate – September 2016



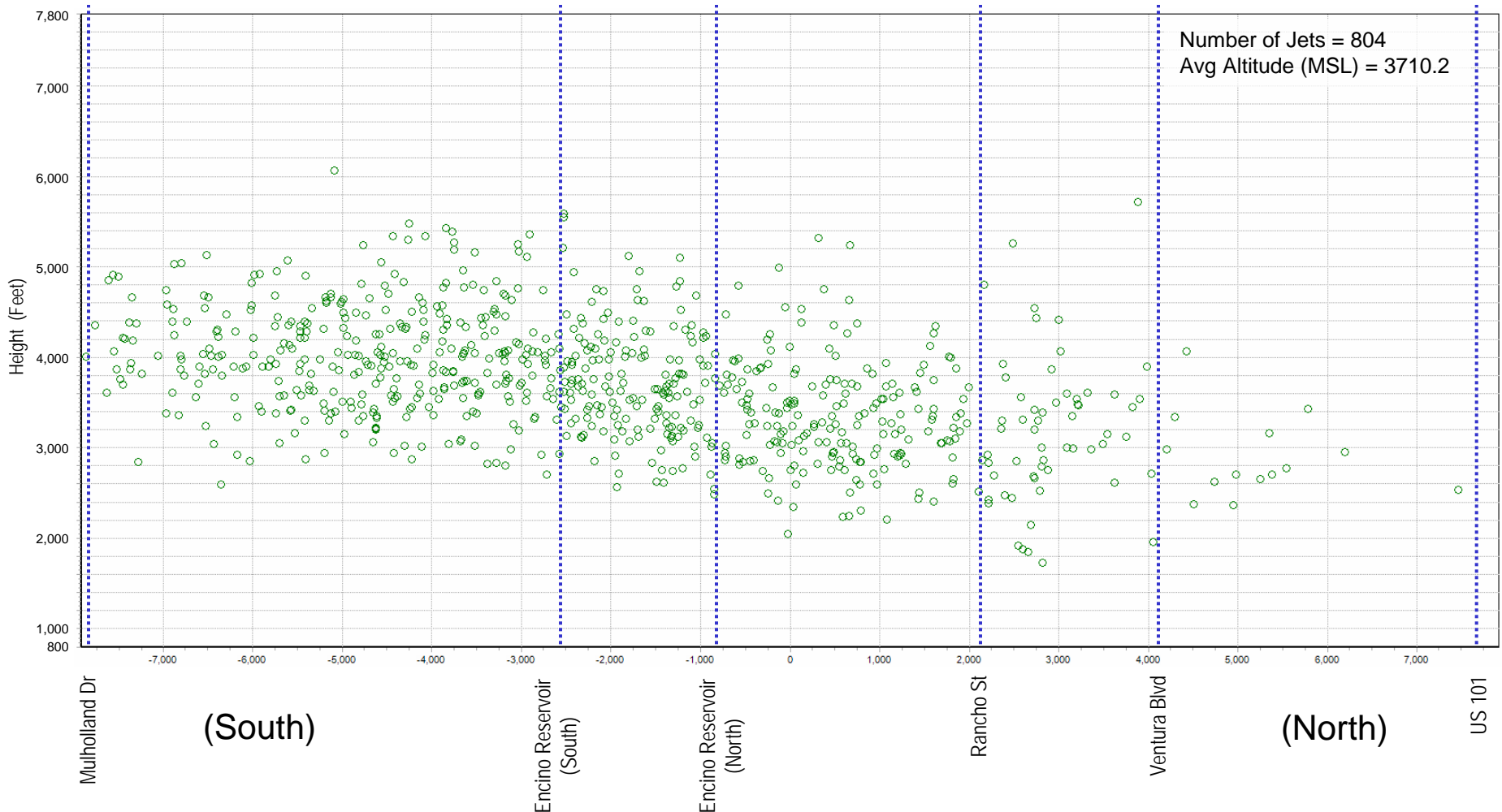
ANOMS Gate Penetration

Encino Gate – September 2017



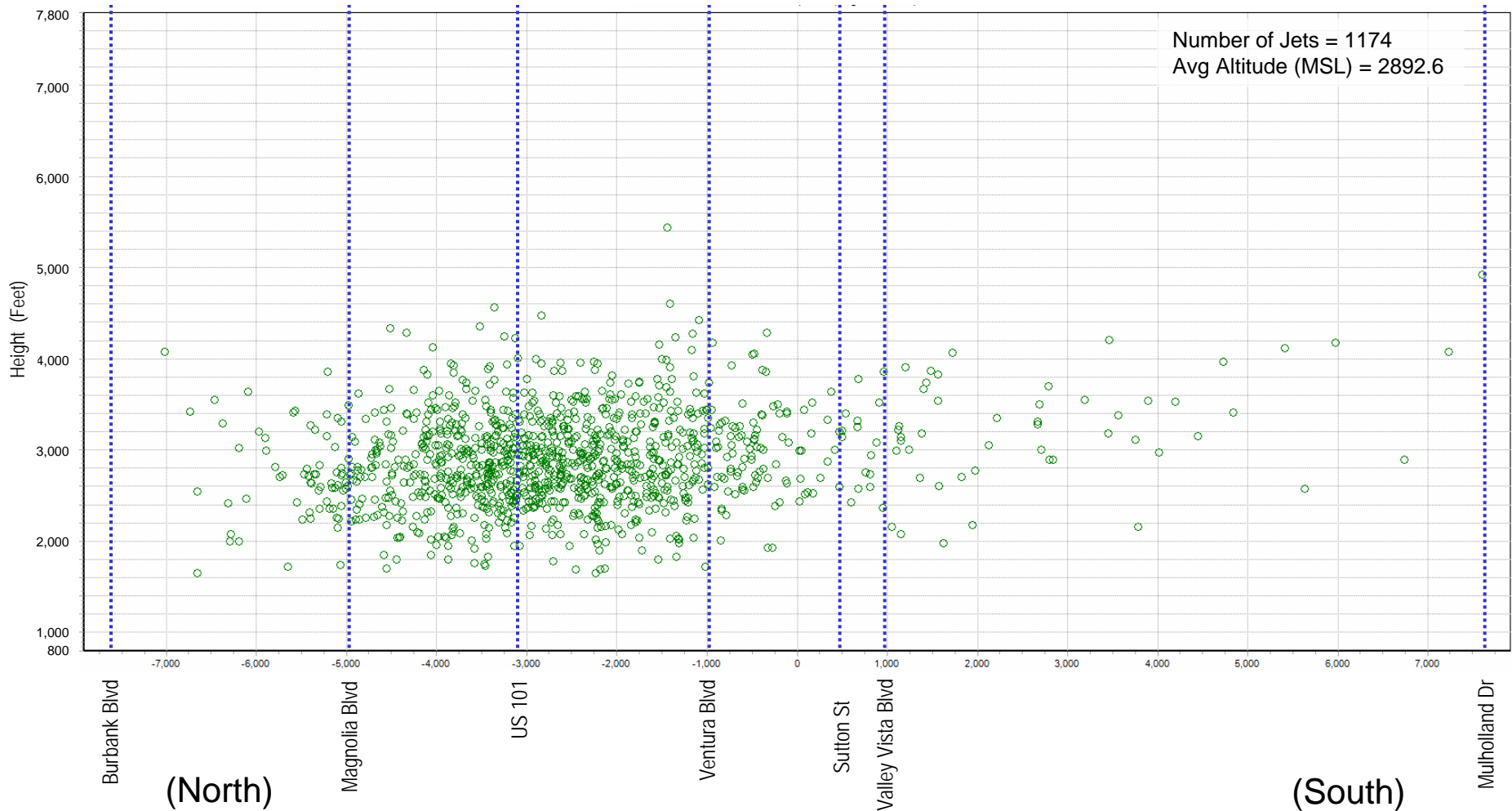
ANOMS Gate Penetration

Encino Gate – September 2018



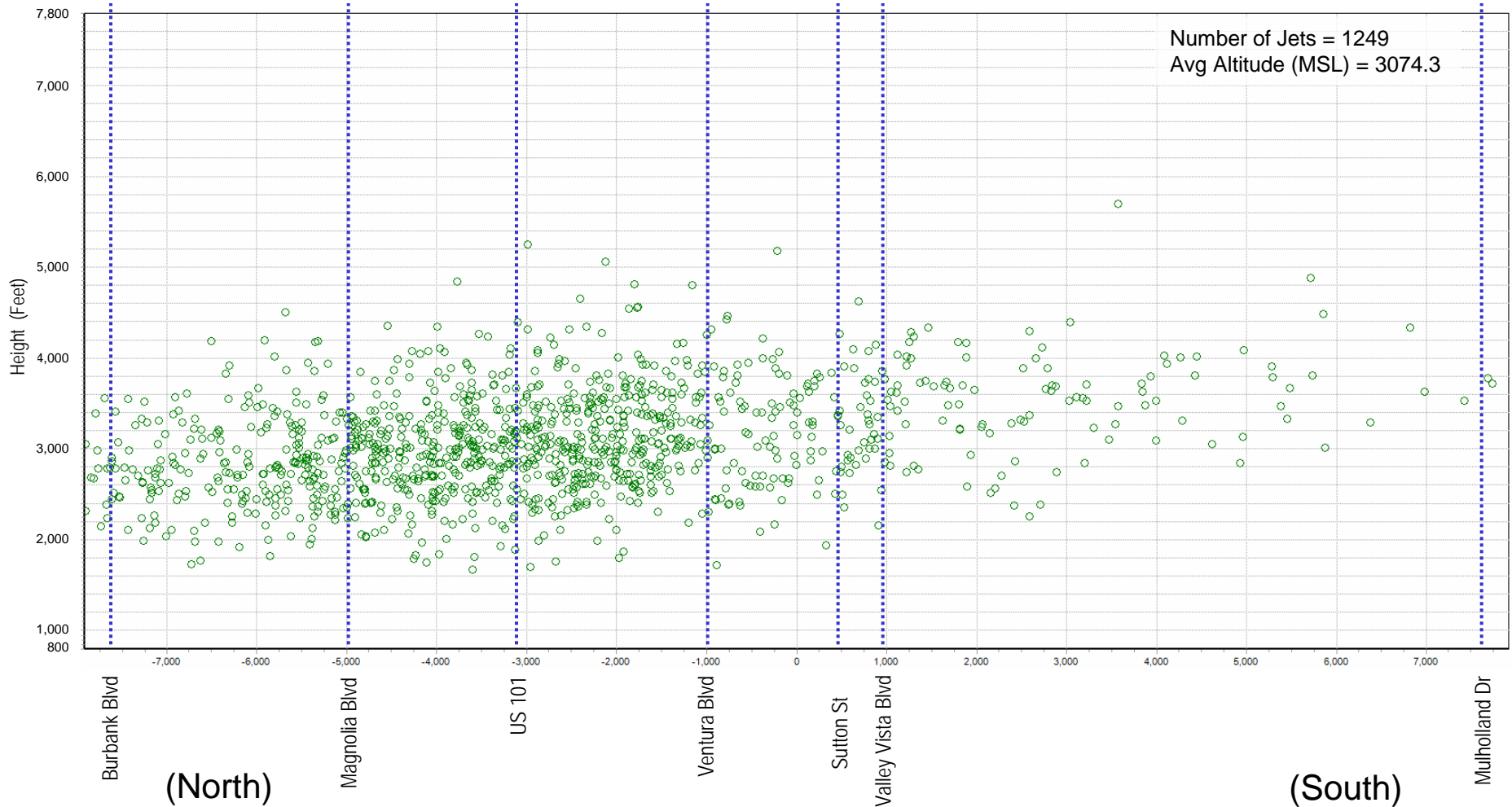
ANOMS Gate Penetration

Sherman Oaks– September 2016



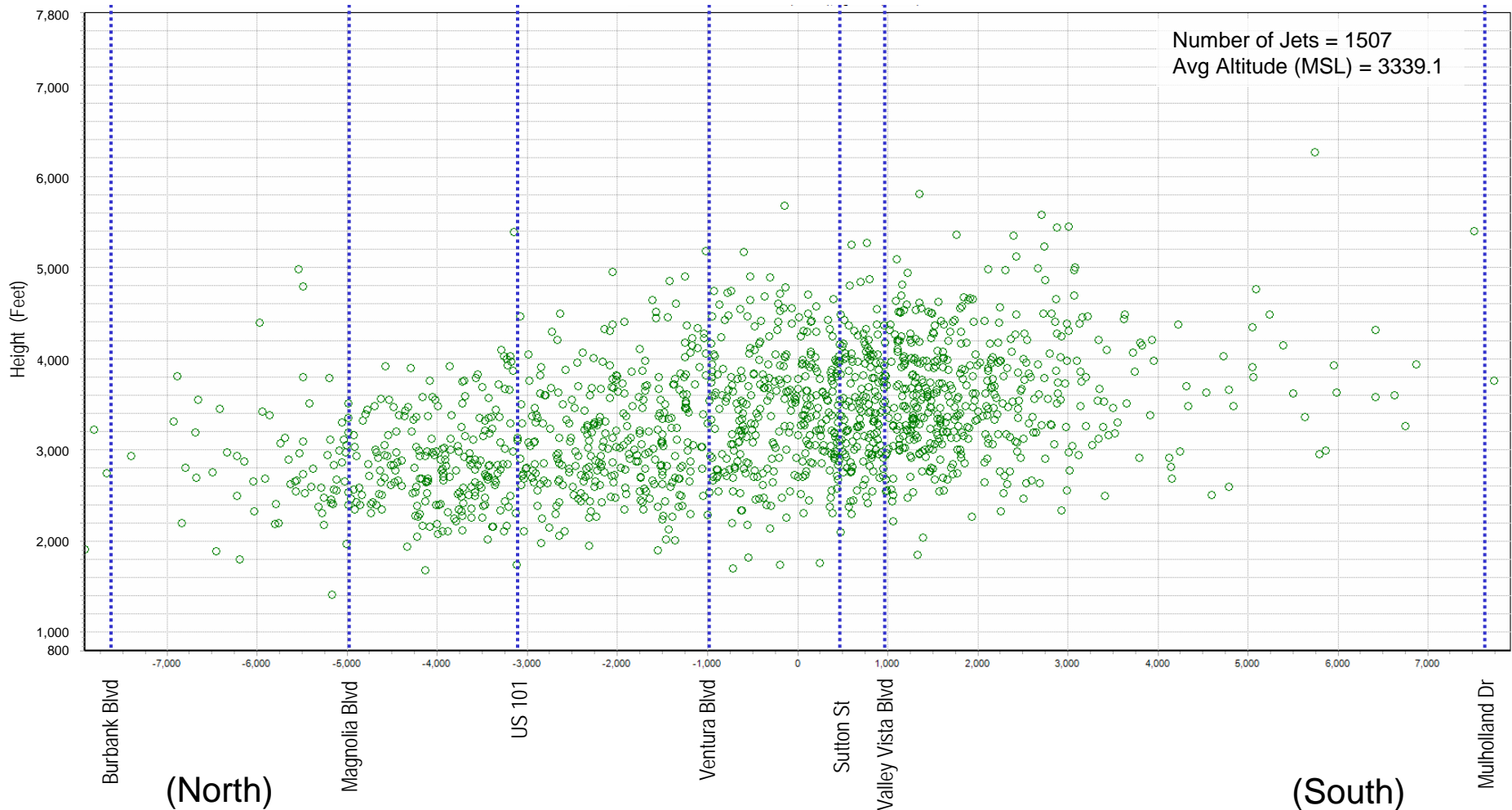
ANOMS Gate Penetration

Sherman Oaks– September 2017



ANOMS Gate Penetration

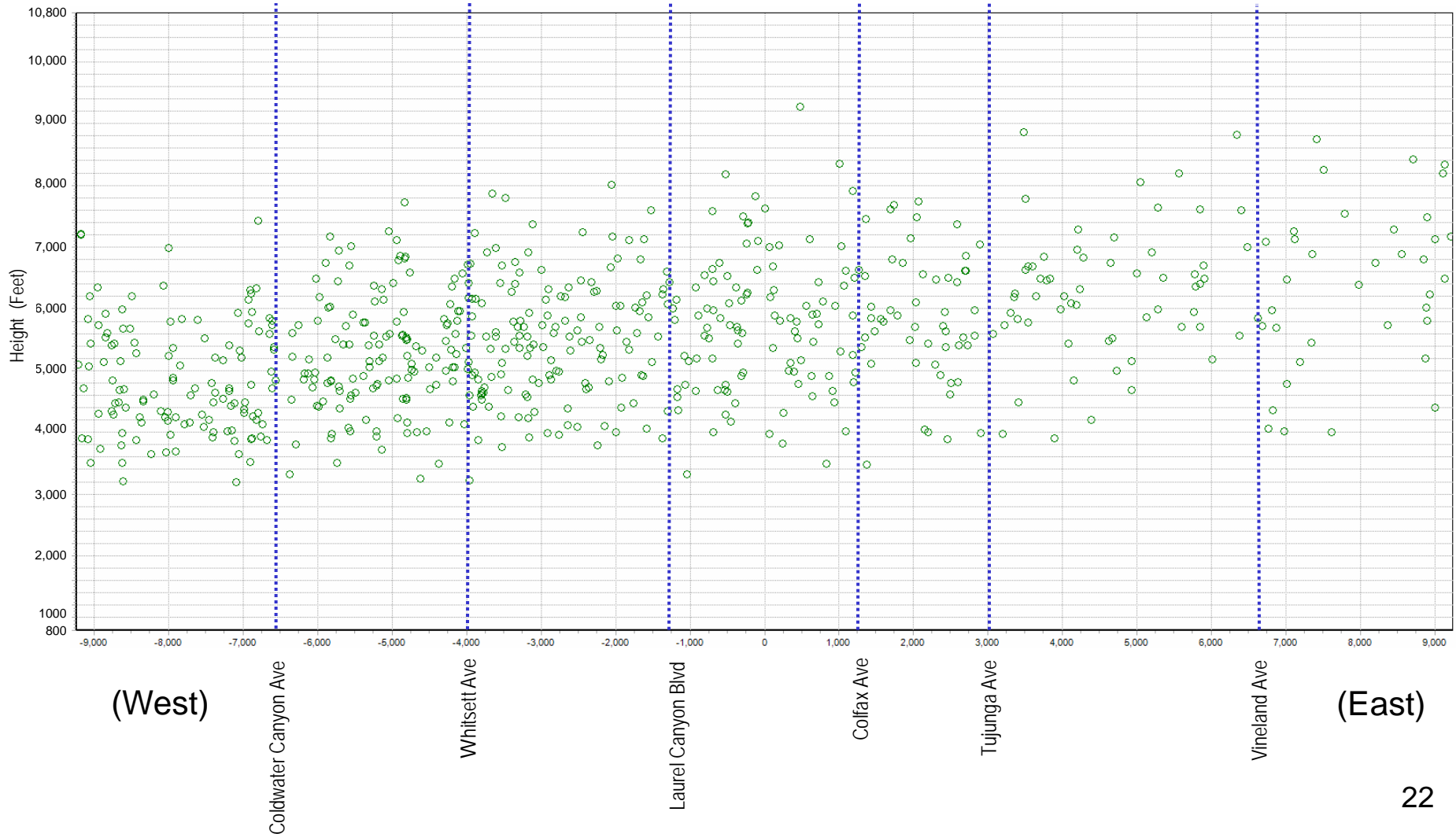
Sherman Oaks– September 2018



ANOMS Gate Penetration

Studio City Gate – September 2016

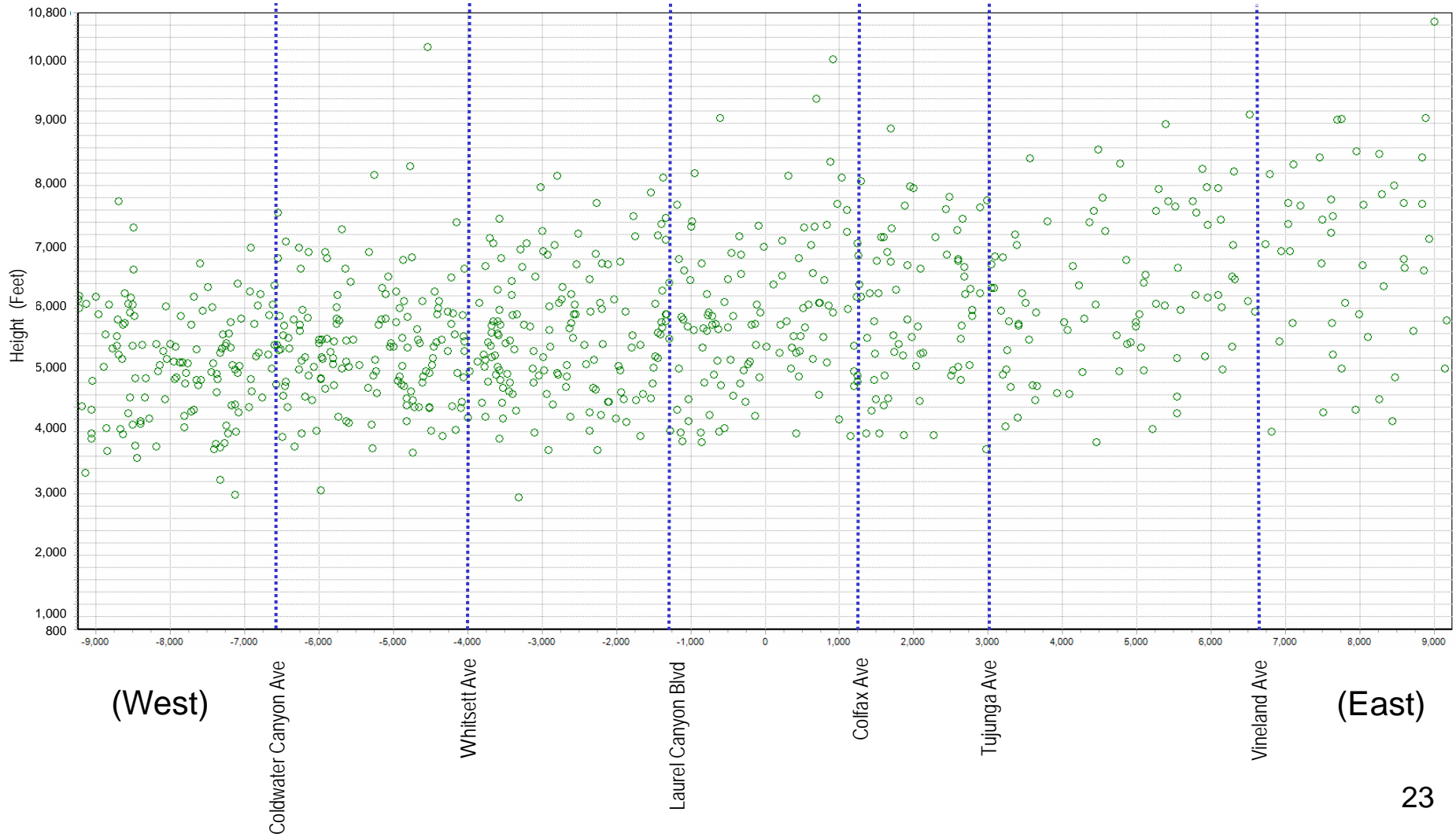
Number of Jets = 656
Avg Altitude (MSL) = 5530.5



ANOMS Gate Penetration

Studio City Gate – September 2017

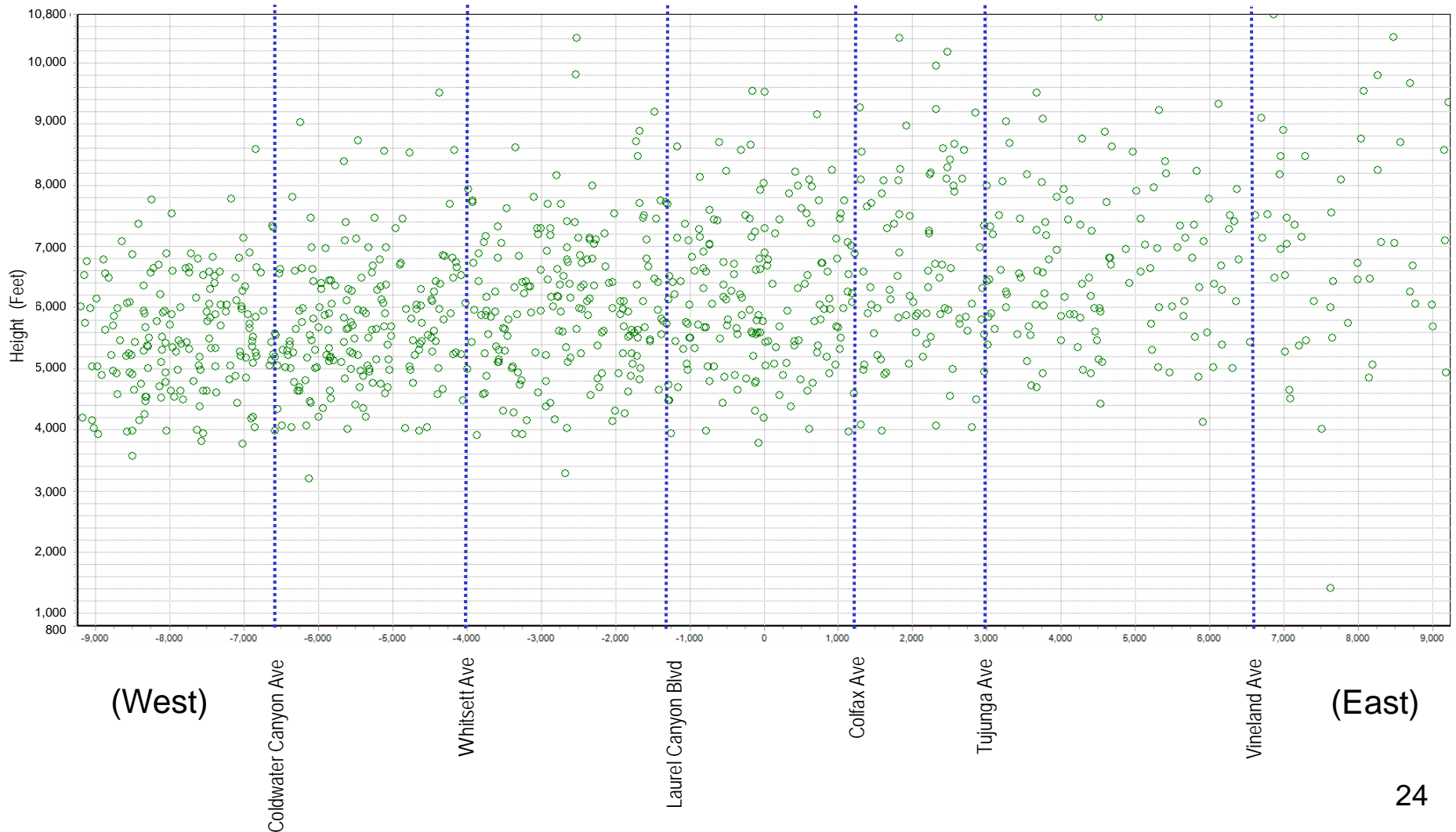
Number of Jets = 749
Avg Altitude (MSL) = 5716.8



ANOMS Gate Penetration

Studio City Gate – September 2018

Number of Jets = 969
Avg Altitude (MSL) = 6128.8



Summary of Data Analysis

Southbound Jet Departures at VNY:

- **Approximately 1/3 turn west and 2/3 turn east**
- **Changes observed since revised Metroplex procedures published May 24, 2018:**
 - **Increased altitudes overall**
 - **Shift in distribution of flights**
 - **Increase in some areas**
 - **Decrease in other areas**

Overall level of operations at Van Nuys have increased since 2016