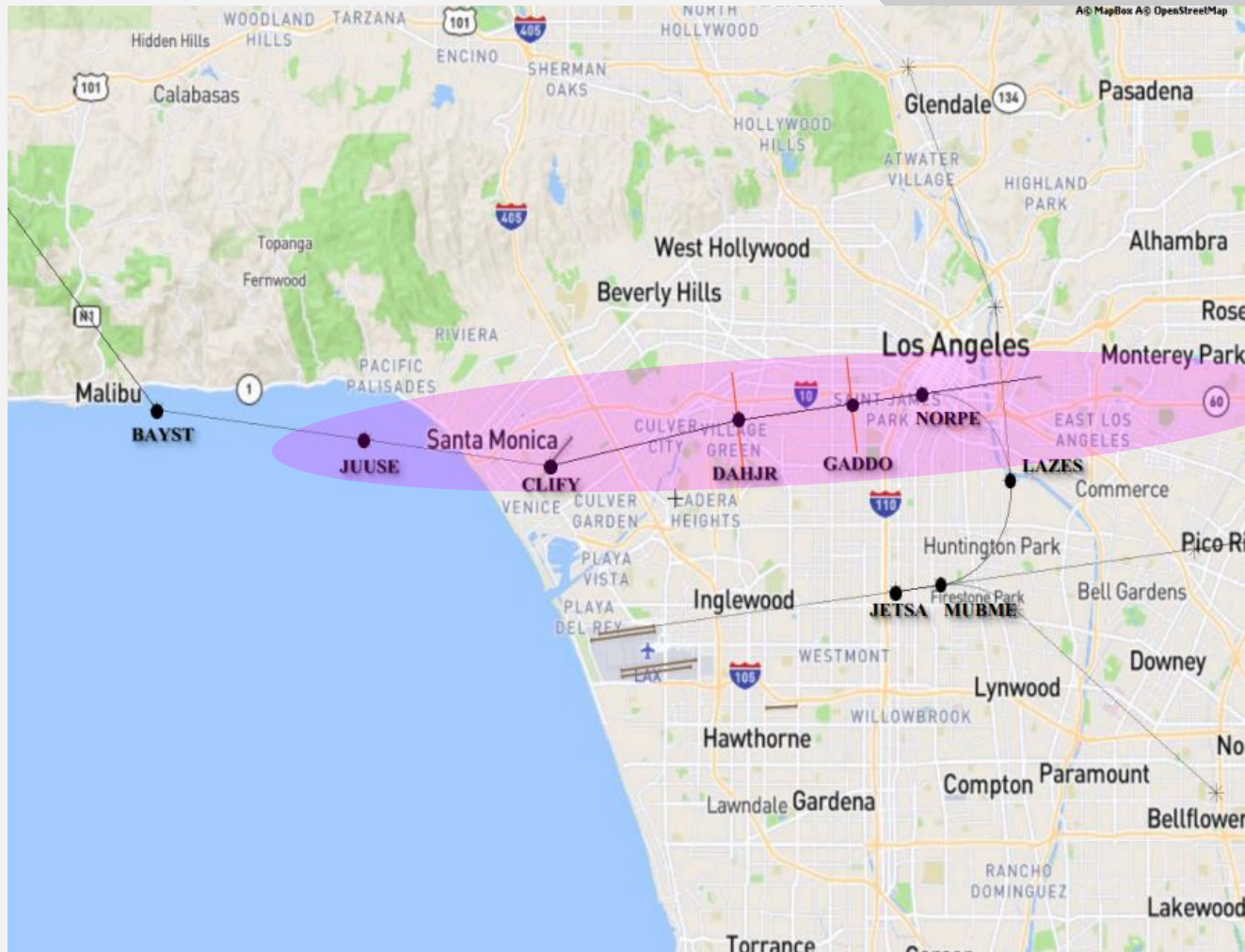




# LAX Metroplex / Wide Area Ad Hoc Committee

LAX Community Noise Roundtable  
Jan 2020

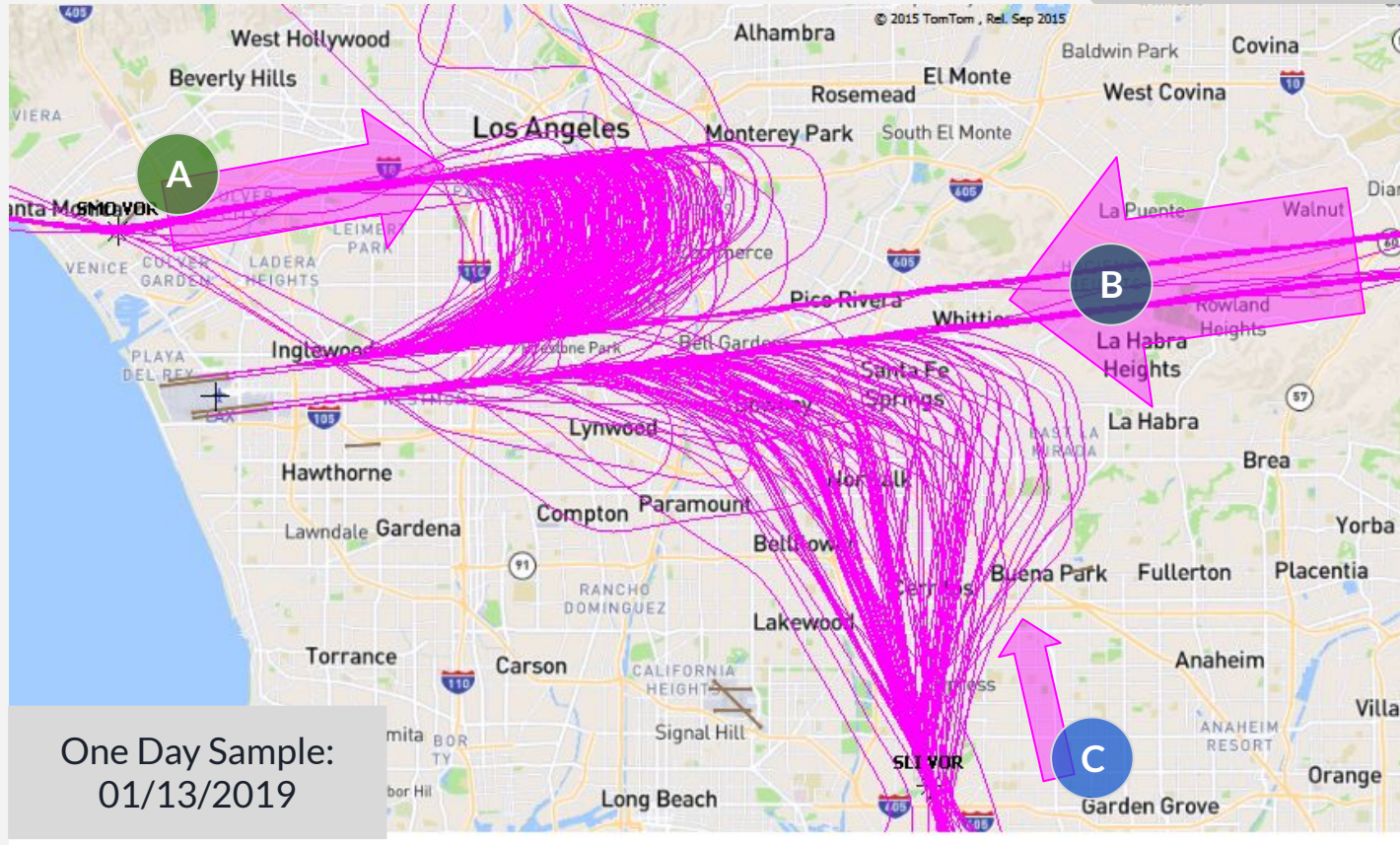
- 
1. North Downwind Arrival Flight Paths
  2. LAX and Other Airports
  3. DAHJR Flight Data - 24 hours
  4. DAHJR - 0100 to 0500 hours
  5. GADDO Flight Data - 24 hours
  6. City Attorney Legal Action Filed Against FAA



# 1. North Downwind Arrival Flight Paths

Area in pink affected by North Downwind Arrival and has been studied more extensively in prior and current initiatives undertaken by the Metroplex Ad Hoc Committee of the LAX Community Noise Roundtable

# 1. North Downwind Arrival Flight Paths - Merges



Percentage breakout of flights landing including their origin paths from one day at LAX

A

North Arrivals  
36% of inbound air traffic

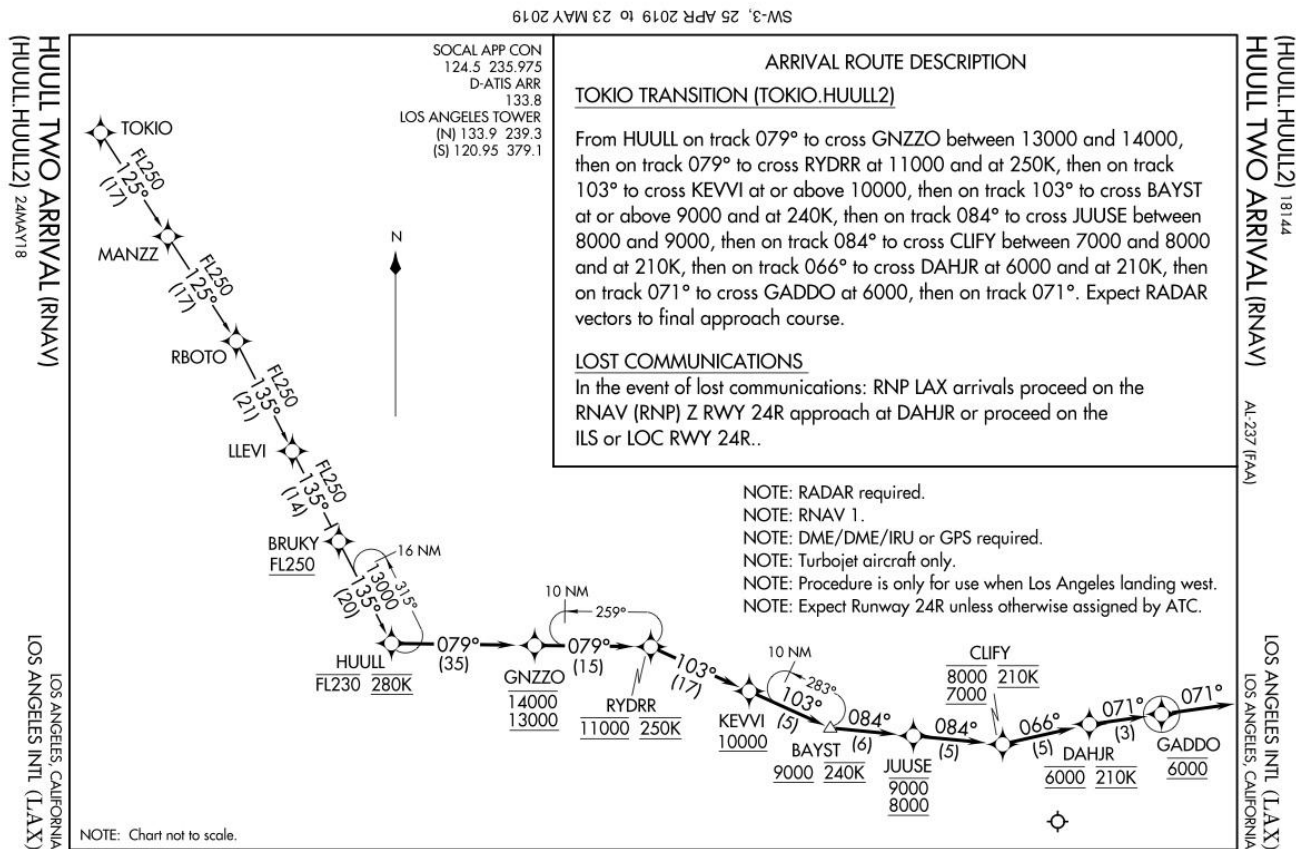
B

East Arrivals  
52% of inbound air traffic

C

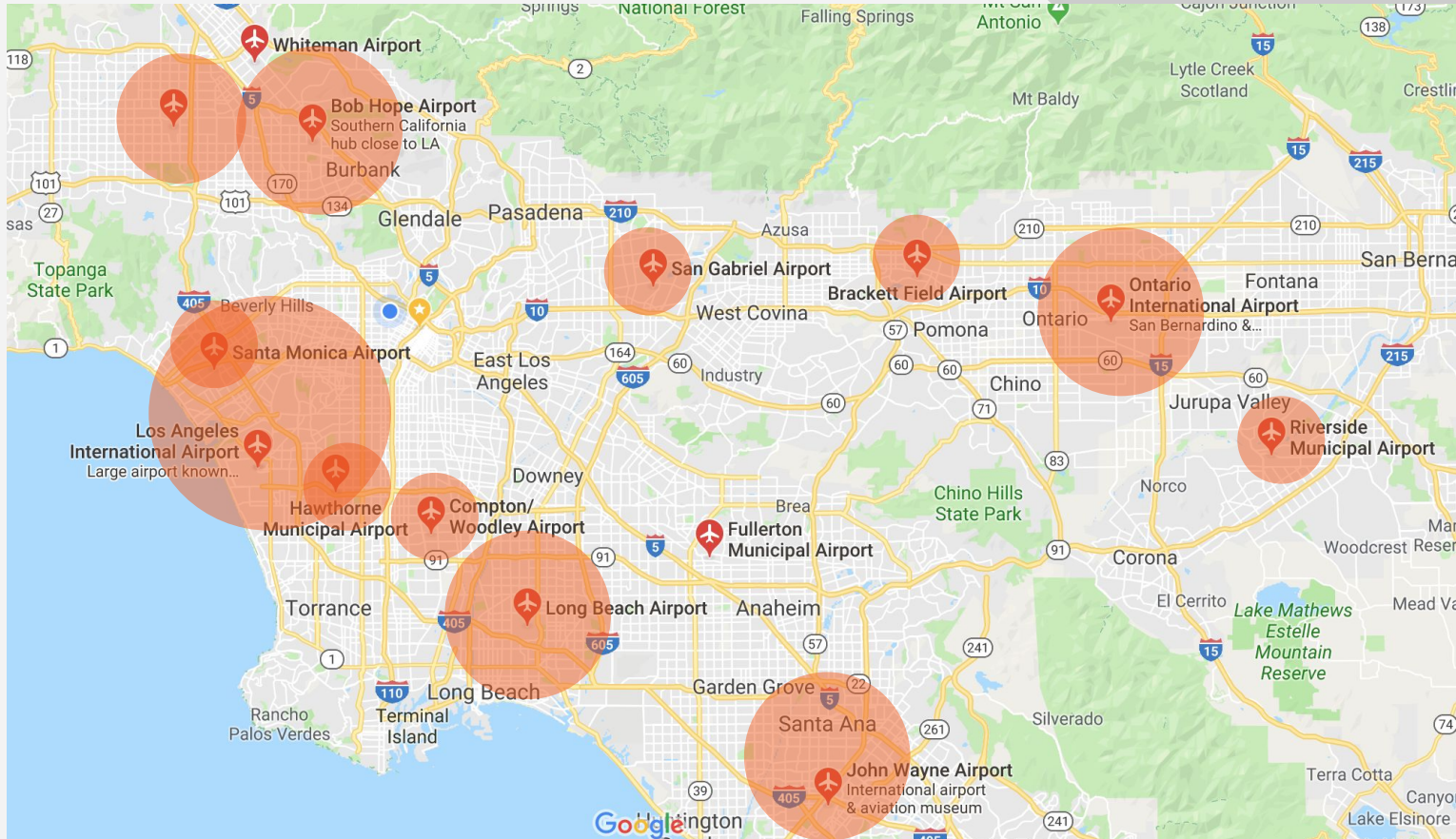
South Arrivals  
12% of inbound air traffic

# 1. North Downwind Arrival Flight Paths - HUULL





## 2. LAX and Other Airports



### 3. 6000 Foot Alt +/- 300 at DAHJR - 24 hours

#### ANOMS Gate Penetration - DAHJR

September 1-30, 2018

Altitude MSL (ft)	Count of Ops*	% of Ops	% of Ops Between Altitudes	% of Ops At or Above Altitudes
>6300	797	8.4%	64.1%	94.3%
6000-6299	2456	25.8%		
5700-5999	2837	29.8%		
5500-5699	1268	13.3%		
5000-5499	1606	16.9%		
4500-4999	429	4.5%	35.9%	99.6%
4000-4499	79	0.8%		
3500-3999	25	0.3%		
3000-3499	8	0.1%		
2500-2999	2	0.0%		
<2500	0	0.0%	100.0%	100.0%
<b>Grand Total</b>	<b>9507</b>	<b>100%</b>		

Prepared by: LAWA Noise Management

\*Data source: LAX ANOMS

#### ANOMS Gate Penetration - DAHJR

October 1-31, 2018

Altitude MSL (ft)	Count of Ops*	% of Ops	% of Ops Between Altitudes	% of Ops At or Above Altitudes
>6300	591	6.4%	59.2%	91.5%
6000-6299	2193	23.8%		
5700-5999	2673	29.0%		
5500-5699	1203	13.1%		
5000-5499	1774	19.3%		
4500-4999	598	6.5%	40.8%	99.6%
4000-4499	145	1.6%		
3500-3999	27	0.3%		
3000-3499	7	0.1%		
2500-2999	1	0.0%		
<2500	1	0.0%	100.0%	100.0%
<b>Grand Total</b>	<b>9213</b>	<b>100%</b>		

Prepared by: LAWA Noise Management

\*Data source: LAX ANOMS

#### ANOMS Gate Penetration - DAHJR

November 1-30, 2018

Altitude MSL (ft)	Count of Ops*	% of Ops	% of Ops Between Altitudes	% of Ops At or Above Altitudes
>6300	727	8.2%	59.8%	91.6%
6000-6299	2124	23.9%		
5700-5999	2463	27.7%		
5500-5699	1169	13.2%		
5000-5499	1660	18.7%		
4500-4999	517	5.8%	40.2%	99.4%
4000-4499	173	1.9%		
3500-3999	37	0.4%		
3000-3499	11	0.1%		
2500-2999	4	0.0%		
<2500	0	0.0%	100.0%	100.0%
<b>Grand Total</b>	<b>8885</b>	<b>100%</b>		

Prepared by: LAWA Noise Management

\*Data source: LAX ANOMS

#### ANOMS Gate Penetration - DAHJR

December 1-31, 2018

Altitude MSL (ft)	Count of Ops*	% of Ops	% of Ops Between Altitudes	% of Ops At or Above Altitudes
>6300	711	8.3%	61.0%	92.0%
6000-6299	2061	24.2%		
5700-5999	2429	28.5%		
5500-5699	1072	12.6%		
5000-5499	1572	18.4%		
4500-4999	488	5.7%	39.0%	99.4%
4000-4499	142	1.7%		
3500-3999	35	0.4%		
3000-3499	15	0.2%		
2500-2999	5	0.1%		
<2500	0	0.0%	100.0%	100.0%
<b>Grand Total</b>	<b>8530</b>	<b>100%</b>		

Prepared by: LAWA Noise Management

\*Data source: LAX ANOMS

### 3. 6000 Foot Alt +/- 300 at DAHJR - 24 hours

#### ANOMS Gate Penetration - DAHJR

January 1-31, 2019

Altitude MSL (ft)	Count of Ops*	% of Ops	% of Ops Between Altitudes	% of Ops At or Above Altitudes
>6300	552	7.6%		
6000-6299	1636	22.5%		
5700-5999	1958	26.9%	56.9%	
5500-5699	979	13.4%	43.1%	
5000-5499	1423	19.5%		89.9%
4500-4999	522	7.2%		
4000-4499	156	2.1%		99.2%
3500-3999	50	0.7%		
3000-3499	10	0.1%		100.0%
2500-2999	1	0.0%		
<2500	0	0.0%		100.0%
<b>Grand Total</b>	<b>7287</b>	<b>100%</b>		

Prepared by: LAWA Noise Management

\*Data source: LAX ANOMS

#### ANOMS Gate Penetration - DAHJR

March 1-31, 2019

Altitude MSL (ft)	Count of Ops*	% of Ops	% of Ops Between Altitudes	% of Ops At or Above Altitudes
>6300	713	8.0%		
6000-6299	2220	24.9%		
5700-5999	2595	29.1%	62.0%	
5500-5699	1113	12.5%	38.0%	
5000-5499	1574	17.7%		92.1%
4500-4999	524	5.9%		
4000-4499	136	1.5%		99.5%
3500-3999	33	0.4%		
3000-3499	7	0.1%		100.0%
2500-2999	1	0.0%		
<2500	0	0.0%		100.0%
<b>Grand Total</b>	<b>8916</b>	<b>100%</b>		

Prepared by: LAWA Noise Management

\*Data source: LAX ANOMS

#### ANOMS Gate Penetration - DAHJR

February 1-28, 2019

Altitude MSL (ft)	Count of Ops*	% of Ops	% of Ops Between Altitudes	% of Ops At or Above Altitudes
>6300	765	9.9%		
6000-6299	1996	25.9%		
5700-5999	2214	28.7%	64.6%	
5500-5699	968	12.6%	35.4%	
5000-5499	1251	16.2%		93.4%
4500-4999	368	4.8%		
4000-4499	98	1.3%		99.4%
3500-3999	34	0.4%		
3000-3499	8	0.1%		99.9%
2500-2999	4	0.1%		
<2500	0	0.0%		100.0%
<b>Grand Total</b>	<b>7706</b>	<b>100%</b>		

Prepared by: LAWA Noise Management

\*Data source: LAX ANOMS

#### ANOMS Gate Penetration - DAHJR

April 1-30, 2019

Altitude MSL (ft)	Count of Ops*	% of Ops	% of Ops Between Altitudes	% of Ops At or Above Altitudes
>6300	679	7.5%		
6000-6299	2368	26.1%		
5700-5999	2677	29.5%	63.1%	
5500-5699	1155	12.7%	36.9%	
5000-5499	1566	17.3%		93.2%
4500-4999	463	5.1%		
4000-4499	120	1.3%		99.6%
3500-3999	27	0.3%		
3000-3499	6	0.1%		100.0%
2500-2999	3	0.0%		
<2500	1	0.0%		100.0%
<b>Grand Total</b>	<b>9065</b>	<b>100%</b>		

Prepared by: LAWA Noise Management

\*Data source: LAX ANOMS



### 3. 6000 Foot Alt +/- 300 at DAHJR - 24 hours

**ANOMS Gate Penetration - DAHJR**  
**May 1-31, 2019**

Altitude MSL (ft)	Count of Ops*	% of Ops	% of Ops Between Altitudes	% of Ops At or Above Altitudes
>6300	660	7.1%		
6000-6299	2381	25.7%		
5700-5999	2669	28.9%	61.7%	
5500-5699	1209	13.1%	38.3%	
5000-5499	1630	17.6%		92.4%
4500-4999	517	5.6%		
4000-4499	141	1.5%		99.5%
3500-3999	29	0.3%		
3000-3499	10	0.1%		99.9%
2500-2999	4	0.0%		
<2500	1	0.0%		100.0%
<b>Grand Total</b>	<b>9251</b>	<b>100%</b>		

Prepared by: LAWA Noise Management

\*Data source: LAX ANOMS

**ANOMS Gate Penetration - DAHJR**  
**July 1-31, 2019**

Altitude MSL (ft)	Count of Ops*	% of Ops	% of Ops Between Altitudes	% of Ops At or Above Altitudes
>6300	784	7.9%		
6000-6299	2699	27.3%		
5700-5999	3129	31.6%	66.8%	
5500-5699	1313	13.3%	33.2%	
5000-5499	1508	15.2%		95.4%
4500-4999	359	3.6%		
4000-4499	75	0.8%		99.7%
3500-3999	21	0.2%		
3000-3499	4	0.0%		100.0%
2500-2999	0	0.0%		
<2500	0	0.0%		100.0%
<b>Grand Total</b>	<b>9892</b>	<b>100%</b>		

Prepared by: LAWA Noise Management

\*Data source: LAX ANOMS

**ANOMS Gate Penetration - DAHJR**  
**June 1-30, 2019**

Altitude MSL (ft)	Count of Ops*	% of Ops	% of Ops Between Altitudes	% of Ops At or Above Altitudes
>6300	642	6.8%		
6000-6299	2759	29.2%		
5700-5999	2985	31.6%	67.6%	
5500-5699	1138	12.1%	32.4%	
5000-5499	1398	14.8%		94.5%
4500-4999	420	4.4%		
4000-4499	74	0.8%		99.7%
3500-3999	14	0.1%		
3000-3499	9	0.1%		100.0%
2500-2999	1	0.0%		
<2500	0	0.0%		100.0%
<b>Grand Total</b>	<b>9440</b>	<b>100%</b>		

Prepared by: LAWA Noise Management

\*Data source: LAX ANOMS

**ANOMS Gate Penetration - DAHJR**  
**August 1-31, 2019**

Altitude MSL (ft)	Count of Ops*	% of Ops	% of Ops Between Altitudes	% of Ops At or Above Altitudes
>6300	698	7.1%		
6000-6299	2627	26.9%		
5700-5999	3108	31.8%	65.8%	
5500-5699	1275	13.0%	34.2%	
5000-5499	1551	15.9%		94.7%
4500-4999	417	4.3%		
4000-4499	88	0.9%		99.8%
3500-3999	14	0.1%		
3000-3499	1	0.0%		100.0%
2500-2999	0	0.0%		
<2500	1	0.0%		100.0%
<b>Grand Total</b>	<b>9780</b>	<b>100%</b>		

Prepared by: LAWA Noise Management

\*Data source: LAX ANOMS

### 3. 6000 Foot Alt +/- 300 at DAHJR - 24 hours

#### ANOMS Gate Penetration - DAHJR

September 1-30, 2019

Altitude MSL (ft)	Count of Ops*	% of Ops	% of Ops Between Altitudes	% of Ops At or Above Altitudes
>6300	675	7.7%		
6000-6299	2178	25.0%		
5700-5999	2570	29.5%	62.2%	
5500-5699	1129	12.9%	37.8%	
5000-5499	1574	18.0%		93.1%
4500-4999	465	5.3%		
4000-4499	95	1.1%		99.6%
3500-3999	29	0.3%		
3000-3499	8	0.1%		100.0%
2500-2999	1	0.0%		
<2500	0	0.0%		100.0%
<b>Grand Total</b>	<b>8724</b>	<b>100%</b>		

Prepared by: LAWA Noise Management

\*Data source: LAX ANOMS

#### ANOMS Gate Penetration - DAHJR

November 1-30, 2019

Altitude MSL (ft)	Count of Ops*	% of Ops	% of Ops Between Altitudes	% of Ops At or Above Altitudes
>6300	493	6.1%		
6000-6299	1780	22.0%		
5700-5999	2371	29.3%	57.3%	
5500-5699	1102	13.6%	42.7%	
5000-5499	1662	20.5%		91.5%
4500-4999	512	6.3%		
4000-4499	144	1.8%		99.6%
3500-3999	26	0.3%		
3000-3499	8	0.1%		100.0%
2500-2999	1	0.0%		
<2500	0	0.0%		100.0%
<b>Grand Total</b>	<b>8099</b>	<b>100%</b>		

Prepared by: LAWA Noise Management

\*Data source: LAX ANOMS

#### ANOMS Gate Penetration - DAHJR

October 1-31, 2019

Altitude MSL (ft)	Count of Ops*	% of Ops	% of Ops Between Altitudes	% of Ops At or Above Altitudes
>6300	633	7.0%		
6000-6299	2070	23.0%		
5700-5999	2728	30.3%	60.3%	
5500-5699	1146	12.7%	39.7%	
5000-5499	1729	19.2%		92.3%
4500-4999	533	5.9%		
4000-4499	125	1.4%		99.6%
3500-3999	29	0.3%		
3000-3499	6	0.1%		100.0%
2500-2999	1	0.0%		
<2500	0	0.0%		100.0%
<b>Grand Total</b>	<b>9000</b>	<b>100%</b>		

Prepared by: LAWA Noise Management

\*Data source: LAX ANOMS

## 4. DAHJR - 0100 to 0500 totals

Altitude MSL (ft)	Time of Night						Totals by Height
	12:00 to 12:59 AM	1:00 to 1:59 AM	2:00 to 2:59 AM	3:00 to 3:59 AM	4:00 to 4:59 AM	5:00 to 5:59 AM	
>6000	15	5	2	5	14	36	77
5750-6000	18	2	1	7	7	10	45
5500-5749	6	1	1	2	1	7	18
5250-5499	2	1	2	2	0	4	11
5000-5249	5	0	2	2	1	4	14
4750-4999	1	1	0	0	0	0	2
<4750	1	1	0	0	2	2	6
<b>Total of All Flights</b>	<b>48</b>	<b>11</b>	<b>8</b>	<b>18</b>	<b>25</b>	<b>63</b>	<b>173</b>
<b>1 to 5 Total</b>			<b>19</b>				

Altitude MSL (ft)	Time of Night						Totals by Height
	12:00 to 12:59 AM	1:00 to 1:59 AM	2:00 to 2:59 AM	3:00 to 3:59 AM	4:00 to 4:59 AM	5:00 to 5:59 AM	
>6000	24	13	11	9	58	72	187
5750-6000	13	4	3	0	9	19	48
5500-5749	6	0	1	1	2	6	16
5250-5499	3	2	1	1	2	8	17
5000-5249	2	1	1	1	1	3	9
4750-4999	3	0	0	0	0	0	3
<4750	6	1	0	0	2	6	15
<b>Total of All Flights</b>	<b>57</b>	<b>21</b>	<b>17</b>	<b>12</b>	<b>74</b>	<b>114</b>	<b>295</b>
<b>1 to 5 Total</b>			<b>17</b>				

Oct 2018  
19 flights

Nov 2018  
17 flights

## 4. DAHJR - 0100 to 0500 totals

Altitude MSL (ft)	Time of Night						Totals by Height
	12:00 to 12:59 AM	1:00 to 1:59 AM	2:00 to 2:59 AM	3:00 to 3:59 AM	4:00 to 4:59 AM	5:00 to 5:59 AM	
>6000	27	10	8	6	28	48	127
5750-6000	13	1	2	1	15	32	64
5500-5749	11	1	0	1	7	10	30
5250-5499	6	0	2	0	8	3	19
5000-5249	6	0	1	0	3	4	14
4750-4999	0	0	0	0	1	2	3
<4750	2	0	0	1	0	3	6
<b>Total of All Flights</b>	<b>65</b>	<b>12</b>	<b>13</b>	<b>9</b>	<b>62</b>	<b>102</b>	<b>263</b>
		<b>1 to 5 Total</b>		<b>25</b>			

Altitude MSL (ft)	Time of Night						Totals by Height
	12:00 to 12:59 AM	1:00 to 1:59 AM	2:00 to 2:59 AM	3:00 to 3:59 AM	4:00 to 4:59 AM	5:00 to 5:59 AM	
>6000	10	6	6	4	3	13	42
5750-6000	6	2	0	0	5	6	19
5500-5749	9	0	1	1	2	3	16
5250-5499	2	0	1	0	3	4	10
5000-5249	2	0	0	1	0	0	3
4750-4999	1	0	0	1	0	1	3
<4750	2	0	0	2	0	1	5
<b>Total of All Flights</b>	<b>32</b>	<b>8</b>	<b>8</b>	<b>9</b>	<b>13</b>	<b>28</b>	<b>98</b>
		<b>1 to 5 Total</b>		<b>12</b>			

Dec 2018  
25 flights

Jan 2019  
12 flights



## 4. DAHJR - 0100 to 0500 totals

Altitude MSL (ft)	Time of Night						Totals by Height
	12:00 to 12:59 AM	1:00 to 1:59 AM	2:00 to 2:59 AM	3:00 to 3:59 AM	4:00 to 4:59 AM	5:00 to 5:59 AM	
>6000	10	4	3	1	7	9	34
5750-6000	5	0	0	4	1	2	12
5500-5749	3	0	0	0	3	2	8
5250-5499	2	1	0	0	1	0	4
5000-5249	1	0	0	1	0	2	4
4750-4999	24	6	11	2	26	40	109
<4750	1	0	0	0	0	3	4
<b>Total of All Flights</b>	<b>46</b>	<b>11</b>	<b>14</b>	<b>8</b>	<b>38</b>	<b>58</b>	<b>175</b>
<b>1 to 5 Total</b>			<b>51</b>				

Altitude MSL (ft)	Time of Night						Totals by Height
	12:00 to 12:59 AM	1:00 to 1:59 AM	2:00 to 2:59 AM	3:00 to 3:59 AM	4:00 to 4:59 AM	5:00 to 5:59 AM	
>6000	15	5	2	4	10	11	47
5750-6000	38	12	2	17	45	52	166
5500-5749	7	0	0	0	3	0	10
5250-5499	1	0	1	0	3	5	10
5000-5249	1	0	0	0	2	3	6
4750-4999	1	1	0	0	1	0	3
<4750	2	0	0	0	1	0	3
<b>Total of All Flights</b>	<b>65</b>	<b>18</b>	<b>5</b>	<b>21</b>	<b>65</b>	<b>71</b>	<b>245</b>
<b>1 to 5 Total</b>			<b>12</b>				

Feb 2019  
51 flights

Mar 2019  
12 flights

## 4. DAHJR - 0100 to 0500 totals

Altitude MSL (ft)	Time of Night						Totals by Height
	12:59 AM	1:00 to 1:59 AM	2:00 to 2:59 AM	3:00 to 3:59 AM	4:00 to 4:59 AM	5:00 to 5:59 AM	
>6000	26	20	10	22	58	56	192
5750-6000	23	3	2	7	6	25	66
5500-5749	5	2	0	1	1	3	12
5250-5499	1	0	0	0	0	1	2
5000-5249	1	0	0	0	1	2	4
4750-4999	0	0	0	0	0	0	0
<4750	2	0	1	0	0	0	3
<b>Total of All Flights</b>	<b>58</b>	<b>25</b>	<b>13</b>	<b>30</b>	<b>66</b>	<b>87</b>	<b>279</b>
		<b>1 to 5 Total</b>		<b>6</b>			

Altitude MSL (ft)	Time of Night						Totals by Height
	12:00 to 12:59 AM	1:00 to 1:59 AM	2:00 to 2:59 AM	3:00 to 3:59 AM	4:00 to 4:59 AM	5:00 to 5:59 AM	
>6000	41	10	5	15	47	49	167
5750-6000	17	5	0	1	15	17	55
5500-5749	6	2	0	1	1	2	12
5250-5499	2	0	0	0	1	0	3
5000-5249	6	0	0	0	0	2	8
4750-4999	2	0	0	0	0	1	3
<4750	4	0	0	1	0	0	5
<b>Total of All Flights</b>	<b>78</b>	<b>17</b>	<b>5</b>	<b>18</b>	<b>64</b>	<b>71</b>	<b>253</b>
		<b>1 to 5 Total</b>		<b>6</b>			

Apr 2019  
6 flights

May 2019  
6 flights

## 4. DAHJR - 0100 to 0500 totals

Altitude MSL (ft)	Time of Night						Totals by Height
	12:00 to 12:59 AM	1:00 to 1:59 AM	2:00 to 2:59 AM	3:00 to 3:59 AM	4:00 to 4:59 AM	5:00 to 5:59 AM	
>6000	44	5	3	19	63	91	225
5750-6000	21	5	2	5	15	31	79
5500-5749	11	0	0	2	1	3	17
5250-5499	4	0	0	0	0	2	6
5000-5249	4	0	0	1	0	0	5
4750-4999	4	1	0	0	0	1	6
<4750	4	1	0	1	1	1	8
<b>Total of All Flights</b>	<b>92</b>	<b>12</b>	<b>5</b>	<b>28</b>	<b>80</b>	<b>129</b>	<b>346</b>
<b>1 to 5 Total</b>				<b>8</b>			

Altitude MSL (ft)	Time of Night						Totals by Height
	12:00 to 12:59 AM	1:00 to 1:59 AM	2:00 to 2:59 AM	3:00 to 3:59 AM	4:00 to 4:59 AM	5:00 to 5:59 AM	
>6000	56	8	7	15	39	55	180
5750-6000	29	1	2	3	14	25	74
5500-5749	9	0	1	0	2	1	13
5250-5499	3	0	0	0	0	2	5
5000-5249	3	0	0	0	0	1	4
4750-4999	1	0	0	0	0	0	1
<4750	2	0	0	0	0	0	2
<b>Total of All Flights</b>	<b>103</b>	<b>9</b>	<b>10</b>	<b>18</b>	<b>55</b>	<b>84</b>	<b>279</b>
<b>1 to 5 Total</b>				<b>3</b>			

Jun 2019  
8 flights

Jul 2019  
3 flights

## 4. DAHJR - 0100 to 0500 totals

Altitude MSL (ft)	Time of Night						Totals by Height
	12:00 to 12:59 AM	1:00 to 1:59 AM	2:00 to 2:59 AM	3:00 to 3:59 AM	4:00 to 4:59 AM	5:00 to 5:59 AM	
>6000	35	3	13	9	43	61	164
5750-6000	26	4	1	0	15	22	68
5500-5749	9	4	1	0	0	1	15
5250-5499	2	0	0	0	0	2	4
5000-5249	5	0	1	0	0	0	6
4750-4999	2	0	0	0	0	1	3
<4750	1	0	0	0	0	1	2
<b>Total of All Flights</b>	<b>80</b>	<b>11</b>	<b>16</b>	<b>9</b>	<b>58</b>	<b>88</b>	<b>262</b>
		<b>1 to 5 Total</b>		<b>6</b>			

Altitude MSL (ft)	Time of Night						Totals by Height
	12:00 to 12:59 AM	1:00 to 1:59 AM	2:00 to 2:59 AM	3:00 to 3:59 AM	4:00 to 4:59 AM	5:00 to 5:59 AM	
>6000	27	4	1	0	4	25	61
5750-6000	10	0	0	1	3	11	25
5500-5749	6	0	0	0	1	1	8
5250-5499	5	0	0	0	0	0	5
5000-5249	3	0	0	0	0	1	4
4750-4999	1	0	0	0	0	0	1
<4750	1	0	0	0	0	0	1
<b>Total of All Flights</b>	<b>53</b>	<b>4</b>	<b>1</b>	<b>1</b>	<b>8</b>	<b>38</b>	<b>105</b>
		<b>1 to 5 Total</b>		<b>1</b>			

Aug 2019  
6 flights

Sep 2019  
1 flight



## 4. DAHJR - 0100 to 0500 totals

Altitude MSL (ft)	Time of Night						Totals by Height
	12:00 to 12:59 AM	1:00 to 1:59 AM	2:00 to 2:59 AM	3:00 to 3:59 AM	4:00 to 4:59 AM	5:00 to 5:59 AM	
>6000	21	2	2	3	3	24	55
5750-6000	6	0	0	1	0	6	13
5500-5749	6	0	0	0	0	3	9
5250-5499	1	0	0	0	1	0	2
5000-5249	1	0	0	0	0	1	2
4750-4999	0	0	0	0	0	3	3
<4750	3	0	0	0	0	0	3
<b>Total of All Flights</b>	<b>38</b>	<b>2</b>	<b>2</b>	<b>4</b>	<b>4</b>	<b>37</b>	<b>87</b>
		1 to 5 Total		1			

Altitude MSL (ft)	Time of Night						Totals by Height
	12:00 to 12:59 AM	1:00 to 1:59 AM	2:00 to 2:59 AM	3:00 to 3:59 AM	4:00 to 4:59 AM	5:00 to 5:59 AM	
>6000	14	1	2	5	12	37	71
5750-6000	6	1	0	1	4	21	33
5500-5749	4	0	1	0	0	4	9
5250-5499	2	0	0	0	2	3	7
5000-5249	1	0	0	0	0	2	3
4750-4999	2	0	0	0	0	1	3
<4750	1	0	0	0	1	0	2
<b>Total of All Flights</b>	<b>30</b>	<b>2</b>	<b>3</b>	<b>6</b>	<b>19</b>	<b>68</b>	<b>128</b>
		1 to 5 Total		4			

Oct 2019  
1 flight

Nov 2019  
4 flights

# 5. 6000 Foot Alt +/- 300 at GADDO - 24 hours

## ANOMS Gate Penetration - GADDO

September 1-30, 2018

Altitude MSL (ft)	Count of Ops*	% of Ops	% of Ops Between Altitudes	% of Ops At or Above Altitudes
>6300	55	1%	8.5%	91.5%
6000-6299	227	2%		
5700-5999	526	6%		
5500-5699	462	5%		
5000-5499	2454	26%	88.0%	39.2%
4500-4999	2841	30%		
4000-4499	1784	19%		
3500-3999	790	8%		
3000-3499	264	3%	99.1%	100.0%
2500-2999	84	1%		
<2500	5	0%		
Grand Total	9492	100%		

## ANOMS Gate Penetration - GADDO

November 1-30, 2018

Altitude MSL (ft)	Count of Ops*	% of Ops	% of Ops Between Altitudes	% of Ops At or Above Altitudes
>6300	67	0.8%	8.0%	92.0%
6000-6299	184	2.1%		
5700-5999	459	5.2%		
5500-5699	372	4.2%		
5000-5499	2053	23.1%	84.1%	35.3%
4500-4999	2581	29.1%		
4000-4499	1744	19.7%		
3500-3999	907	10.2%		
3000-3499	359	4.0%	98.4%	100.0%
2500-2999	142	1.6%		
<2500	4	0.0%		
Grand Total	8872	100%		

## ANOMS Gate Penetration - GADDO

October 1-31, 2018

Altitude MSL (ft)	Count of Ops*	% of Ops	% of Ops Between Altitudes	% of Ops At or Above Altitudes
>6300	47	0.5%	7.0%	93.0%
6000-6299	151	1.6%		
5700-5999	448	4.9%		
5500-5699	389	4.2%		
5000-5499	2166	23.5%	83.9%	34.8%
4500-4999	2633	28.6%		
4000-4499	1888	20.5%		
3500-3999	948	10.3%		
3000-3499	419	4.6%	98.8%	100.0%
2500-2999	107	1.2%		
<2500	5	0.1%		
Grand Total	9201	100%		

## ANOMS Gate Penetration - GADDO

December 1-31, 2018

Altitude MSL (ft)	Count of Ops*	% of Ops	% of Ops Between Altitudes	% of Ops At or Above Altitudes
>6300	43	0.5%	7.6%	92.4%
6000-6299	163	1.9%		
5700-5999	438	5.1%		
5500-5699	415	4.9%		
5000-5499	1937	22.8%	83.1%	35.2%
4500-4999	2380	28.0%		
4000-4499	1696	19.9%		
3500-3999	907	10.7%		
3000-3499	408	4.8%	98.5%	100.0%
2500-2999	121	1.4%		
<2500	6	0.1%		
Grand Total	8514	100%		

# 5. 6000 Foot Alt +/- 300 at GADDO - 24 hours

## ANOMS Gate Penetration - GADDO

January 1-31, 2019

Altitude MSL (ft)	Count of Ops*	% of Ops	% of Ops Between Altitudes	% of Ops At or Above Altitudes
>6300	41	0.6%	6.8%	32.8%
6000-6299	120	1.6%		
5700-5999	335	4.6%		
5500-5699	320	4.4%		
5000-5499	1572	21.6%	93.2%	81.9%
4500-4999	1992	27.4%		
4000-4499	1577	21.7%		
3500-3999	799	11.0%		
3000-3499	375	5.2%	98.0%	98.0%
2500-2999	138	1.9%		
<2500	5	0.1%		
Grand Total	7274	100%	100.0%	

## ANOMS Gate Penetration - GADDO

March 1-31, 2019

Altitude MSL (ft)	Count of Ops*	% of Ops	% of Ops Between Altitudes	% of Ops At or Above Altitudes
>6300	52	0.6%	6.8%	36.8%
6000-6299	154	1.7%		
5700-5999	397	4.5%		
5500-5699	413	4.6%		
5000-5499	2259	25.4%	93.2%	84.7%
4500-4999	2531	28.4%		
4000-4499	1739	19.5%		
3500-3999	873	9.8%		
3000-3499	375	4.2%	98.7%	98.7%
2500-2999	107	1.2%		
<2500	7	0.1%		
Grand Total	8907	100%	100.0%	

## ANOMS Gate Penetration - GADDO

February 1-28, 2019

Altitude MSL (ft)	Count of Ops*	% of Ops	% of Ops Between Altitudes	% of Ops At or Above Altitudes
>6300	66	0.9%	8.6%	40.1%
6000-6299	156	2.0%		
5700-5999	437	5.7%		
5500-5699	440	5.7%		
5000-5499	1984	25.8%	91.4%	86.0%
4500-4999	2145	27.9%		
4000-4499	1387	18.0%		
3500-3999	676	8.8%		
3000-3499	314	4.1%	98.8%	98.8%
2500-2999	83	1.1%		
<2500	7	0.1%		
Grand Total	7695	100%	100.0%	

## ANOMS Gate Penetration - GADDO

April 1-30, 2019

Altitude MSL (ft)	Count of Ops*	% of Ops	% of Ops Between Altitudes	% of Ops At or Above Altitudes
>6300	50	0.6%	7.8%	38.6%
6000-6299	162	1.8%		
5700-5999	490	5.4%		
5500-5699	435	4.8%		
5000-5499	2357	26.0%	92.2%	86.2%
4500-4999	2629	29.0%		
4000-4499	1686	18.6%		
3500-3999	778	8.6%		
3000-3499	358	4.0%	98.8%	98.8%
2500-2999	108	1.2%		
<2500	3	0.0%		
Grand Total	9056	100%	100.0%	

# 5. 6000 Foot Alt +/- 300 at GADDO - 24 hours

ANOMS Gate Penetration - GADDO  
May 1-31, 2019

Altitude MSL (ft)	Count of Ops*	% of Ops	% of Ops Between Altitudes	% of Ops At or Above Altitudes
>6300	52	0.6%		
6000-6299	162	1.8%		
5700-5999	477	5.2%	7.5%	
5500-5699	463	5.0%	92.5%	
5000-5499	2306	25.0%		37.4%
4500-4999	2752	29.8%		
4000-4499	1703	18.4%		85.7%
3500-3999	820	8.9%		
3000-3499	350	3.8%		98.3%
2500-2999	143	1.5%		
<2500	11	0.1%		100.0%
<b>Grand Total</b>	<b>9239</b>	<b>100%</b>		

Prepared by: LAWA Noise Management  
\*Data source: LAX ANOMS

ANOMS Gate Penetration - GADDO  
July 1-31, 2019

Altitude MSL (ft)	Count of Ops*	% of Ops	% of Ops Between Altitudes	% of Ops At or Above Altitudes
>6300	43	0.4%		
6000-6299	159	1.6%		
5700-5999	536	5.4%	7.5%	
5500-5699	511	5.2%	92.5%	
5000-5499	2886	29.2%		41.8%
4500-4999	3051	30.8%		
4000-4499	1741	17.6%		90.3%
3500-3999	678	6.9%		
3000-3499	231	2.3%		99.4%
2500-2999	55	0.6%		
<2500	0	0.0%		100.0%
<b>Grand Total</b>	<b>9891</b>	<b>100%</b>		

Prepared by: LAWA Noise Management  
\*Data source: LAX ANOMS

ANOMS Gate Penetration - GADDO  
June 1-30, 2019

Altitude MSL (ft)	Count of Ops*	% of Ops	% of Ops Between Altitudes	% of Ops At or Above Altitudes
>6300	41	0.4%		
6000-6299	186	2.0%		
5700-5999	522	5.5%	7.9%	
5500-5699	457	4.8%	92.1%	
5000-5499	2734	29.0%		41.8%
4500-4999	2832	30.0%		
4000-4499	1651	17.5%		89.3%
3500-3999	698	7.4%		
3000-3499	238	2.5%		99.2%
2500-2999	73	0.8%		
<2500	5	0.1%		100.0%
<b>Grand Total</b>	<b>9437</b>	<b>100%</b>		

Prepared by: LAWA Noise Management  
\*Data source: LAX ANOMS

ANOMS Gate Penetration - GADDO  
August 1-31, 2019

Altitude MSL (ft)	Count of Ops*	% of Ops	% of Ops Between Altitudes	% of Ops At or Above Altitudes
>6300	37	0.4%		
6000-6299	154	1.6%		
5700-5999	471	4.8%	6.8%	
5500-5699	472	4.8%	93.2%	
5000-5499	2731	27.9%		39.5%
4500-4999	3086	31.6%		
4000-4499	1782	18.2%		89.4%
3500-3999	737	7.5%		
3000-3499	252	2.6%		99.5%
2500-2999	49	0.5%		
<2500	2	0.0%		100.0%
<b>Grand Total</b>	<b>9773</b>	<b>100%</b>		

Prepared by: LAWA Noise Management  
\*Data source: LAX ANOMS



# 5. 6000 Foot Alt +/- 300 at GADDO - 24 hours

**ANOMS Gate Penetration - GADDO**  
**September 1-30, 2019**

Altitude MSL (ft)	Count of Ops*	% of Ops	% of Ops Between Altitudes	% of Ops At or Above Altitudes
>6300	44	0.5%		
6000-6299	156	1.8%		
5700-5999	461	5.3%	7.6%	
5500-5699	466	5.3%	92.4%	
5000-5499	2232	25.6%		38.5%
4500-4999	2507	28.8%		
4000-4499	1682	19.3%		86.6%
3500-3999	781	9.0%		
3000-3499	310	3.6%		99.1%
2500-2999	74	0.8%		
<2500	7	0.1%		100.0%
<b>Grand Total</b>	<b>8720</b>	<b>100%</b>		

Prepared by: LAWA Noise Management

\*Data source: LAX ANOMS

**ANOMS Gate Penetration - GADDO**  
**November 1-30, 2019**

Altitude MSL (ft)	Count of Ops*	% of Ops	% of Ops Between Altitudes	% of Ops At or Above Altitudes
>6300	27	0.3%		
6000-6299	120	1.5%		
5700-5999	350	4.3%	6.1%	
5500-5699	308	3.8%	93.9%	
5000-5499	1759	21.7%		31.7%
4500-4999	2394	29.6%		
4000-4499	1721	21.3%		82.5%
3500-3999	919	11.4%		
3000-3499	394	4.9%		98.7%
2500-2999	98	1.2%		
<2500	5	0.1%		100.0%
<b>Grand Total</b>	<b>8095</b>	<b>100%</b>		

Prepared by: LAWA Noise Management

\*Data source: LAX ANOMS

**ANOMS Gate Penetration - GADDO**  
**October 1-31, 2019**

Altitude MSL (ft)	Count of Ops*	% of Ops	% of Ops Between Altitudes	% of Ops At or Above Altitudes
>6300	49	0.5%		
6000-6299	125	1.4%		
5700-5999	438	4.9%	6.8%	
5500-5699	370	4.1%	93.2%	
5000-5499	2041	22.7%		33.6%
4500-4999	2635	29.3%		
4000-4499	1881	20.9%		83.8%
3500-3999	917	10.2%		
3000-3499	435	4.8%		98.9%
2500-2999	96	1.1%		
<2500	7	0.1%		100.0%
<b>Grand Total</b>	<b>8994</b>	<b>100%</b>		

Prepared by: LAWA Noise Management

\*Data source: LAX ANOMS

## 6. City Attorney Legal Action Filed Against FAA

- June 2019, the City Attorney petitioned the U.S. 9th Circuit Court of Appeals regarding flight paths (a.k.a. North Downwind Arrival) over Mid-City, West Adams and Central Los Angeles.
- As a result, the FAA can no longer discuss any matters regarding North Downwind Arrival (except DAHJR compliance) or TSAS
- August 2019, U.S. 9th Circuit Court of Appeals granted permission for Culver City to join the City of Los Angeles lawsuit.
- **No Update Currently**