

Air Traffic 101

Presented to: Los Angeles Airport/Community Roundtable

By: Dave Foyle, General Manager, Los Angeles District

Date: May 8, 2019



**Federal Aviation
Administration**



One Day of Air Traffic in SoCal

- **Prior to departure, the airline will file a flight plan. Items evaluated to determine which route to fly are:**

- Fuel
- Traffic Patterns
- Weather
- Required Routes



Once the aircrew is ready to depart, they will contact the Airport Traffic Control Tower (ATCT).



One Day of Air Traffic in SoCal Cont...

- Once airborne, the tower controller will turn communications and control of the flight over to the Terminal Radar Approach Control (TRACON) controller.
- For Southern California, this is Southern California (SCT) TRACON located in Miramar, California.



One Day of Air Traffic in SoCal Cont...

- When the flight climbs out of the vertical limits of SCT TRACON, communications will be transferred to the Enroute (Center) controller.
- For Southern California, Los Angeles Center (ZLA) located in Palmdale, California.
- During the stages of flight, controllers will ensure the flight is clear of any other aircraft and known weather.

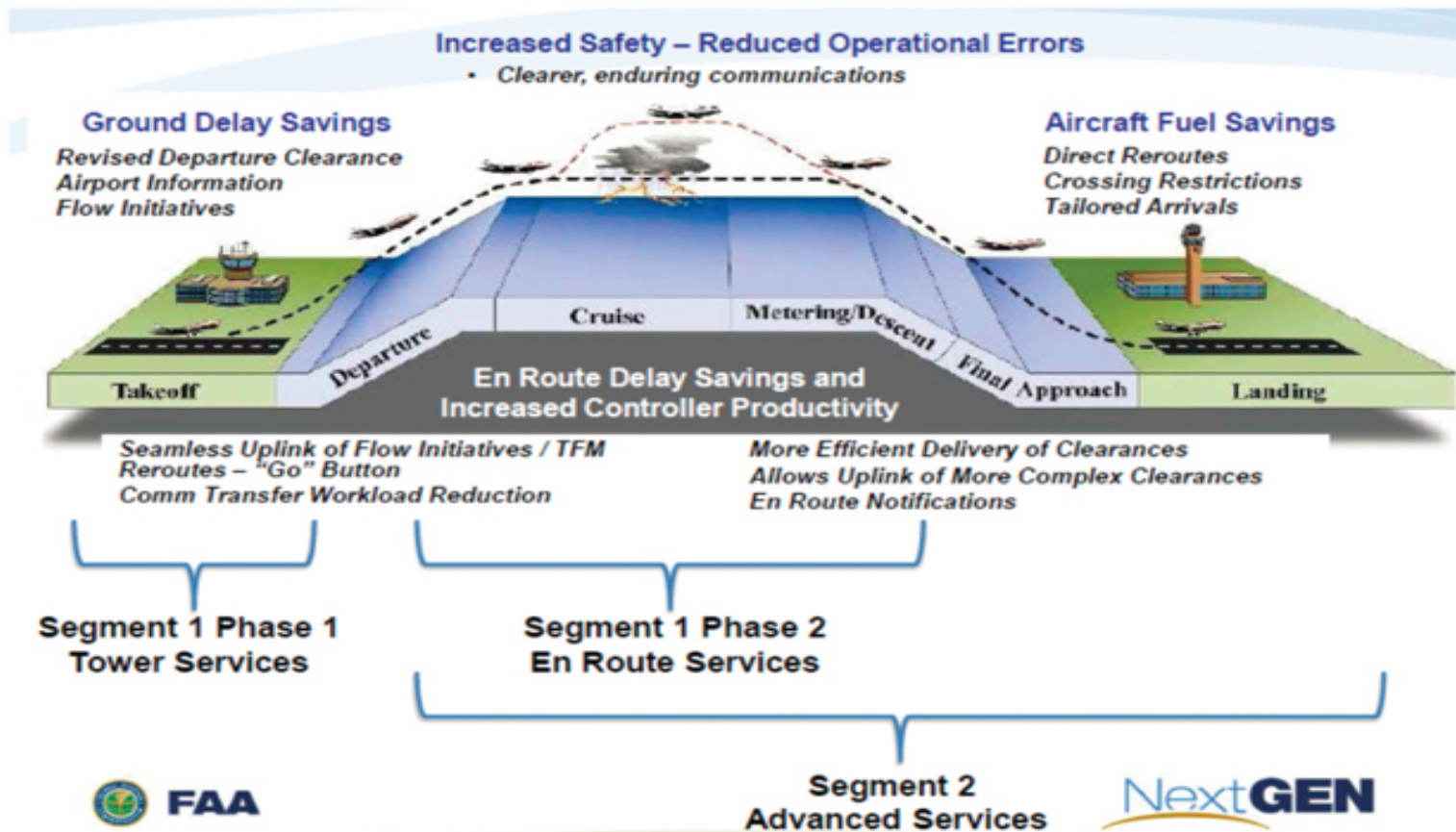


One Day of Air Traffic in SoCal Cont..

- https://www.faa.gov/air_traffic/flight_across_america/

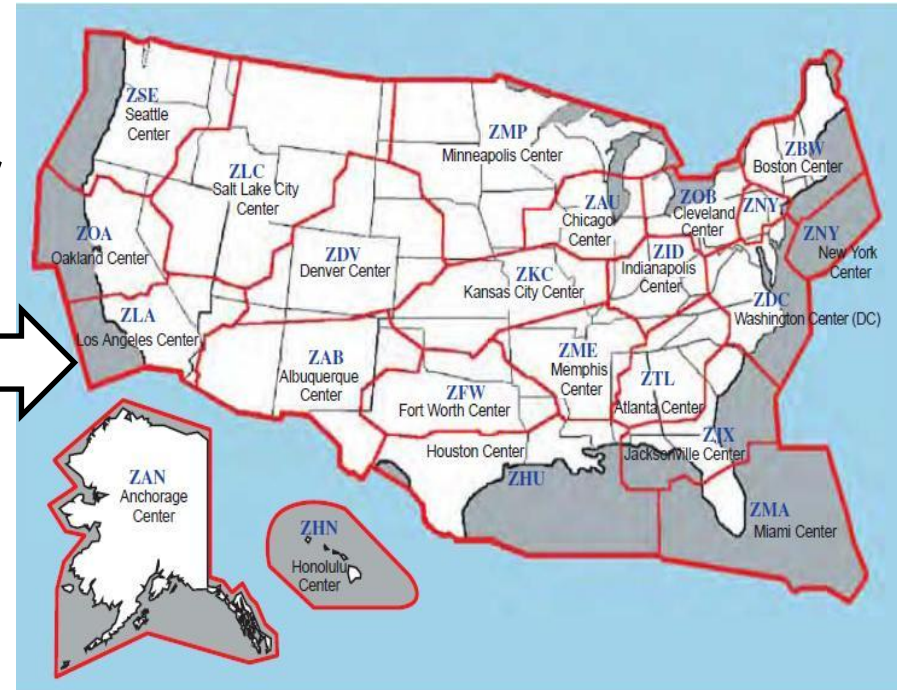


Phases of Flight



National Airspace Boundaries

- **There are 22 Air Traffic Control Centers**
- **Within each Center airspace, there is one or more Terminal Radar Approach Control (TRACON).**
- **Within each TRACON, there can be numerous airports. For example, SCT TRACON has 26 ATCTs.**



How Weather Affects Flight

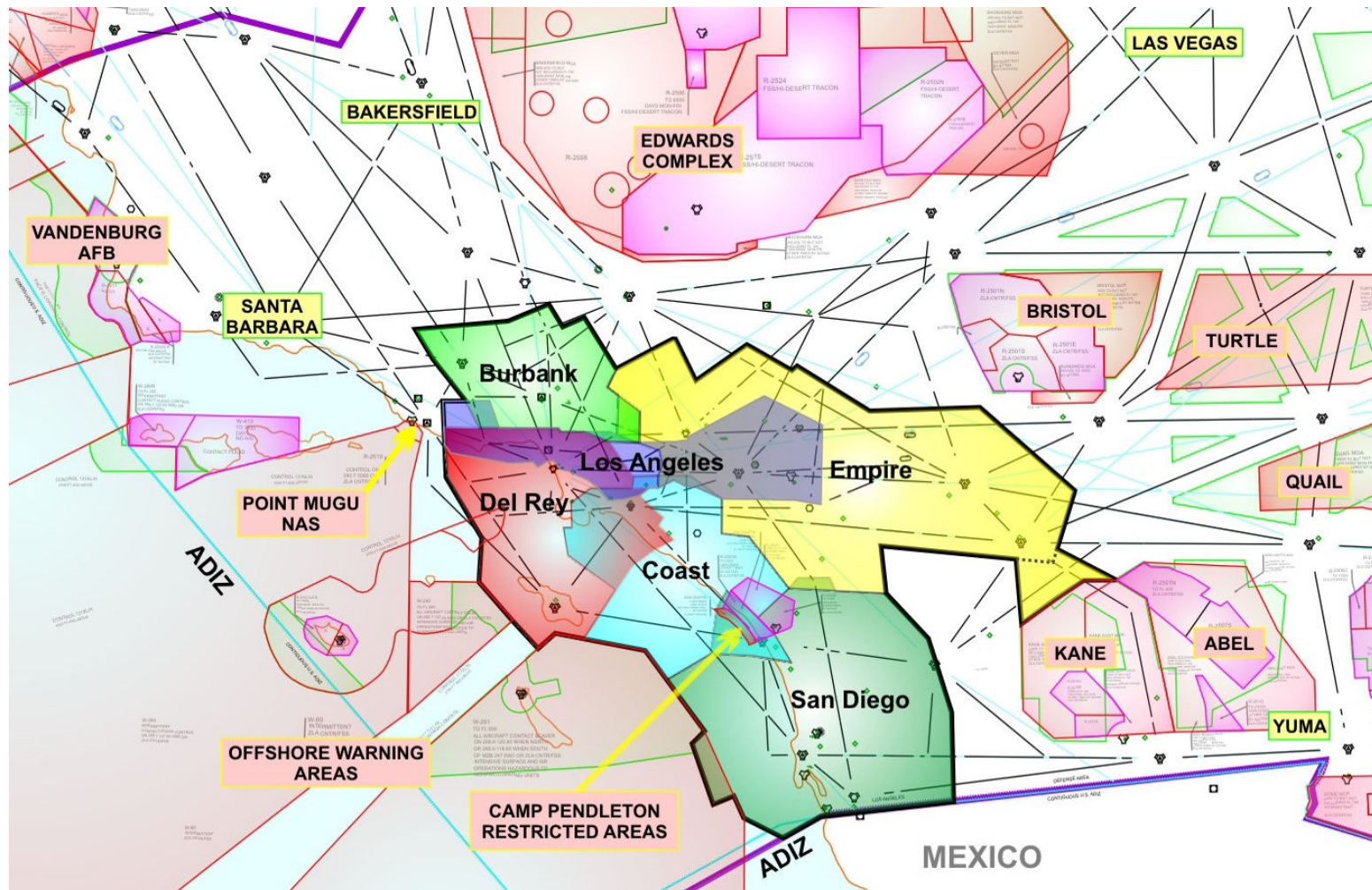
- Weather, and most importantly wind, are vital in determining runway of intended landing or takeoff.
- In most circumstances, aircraft are required to takeoff or land into the wind.



SCT TRACON Traffic Flows

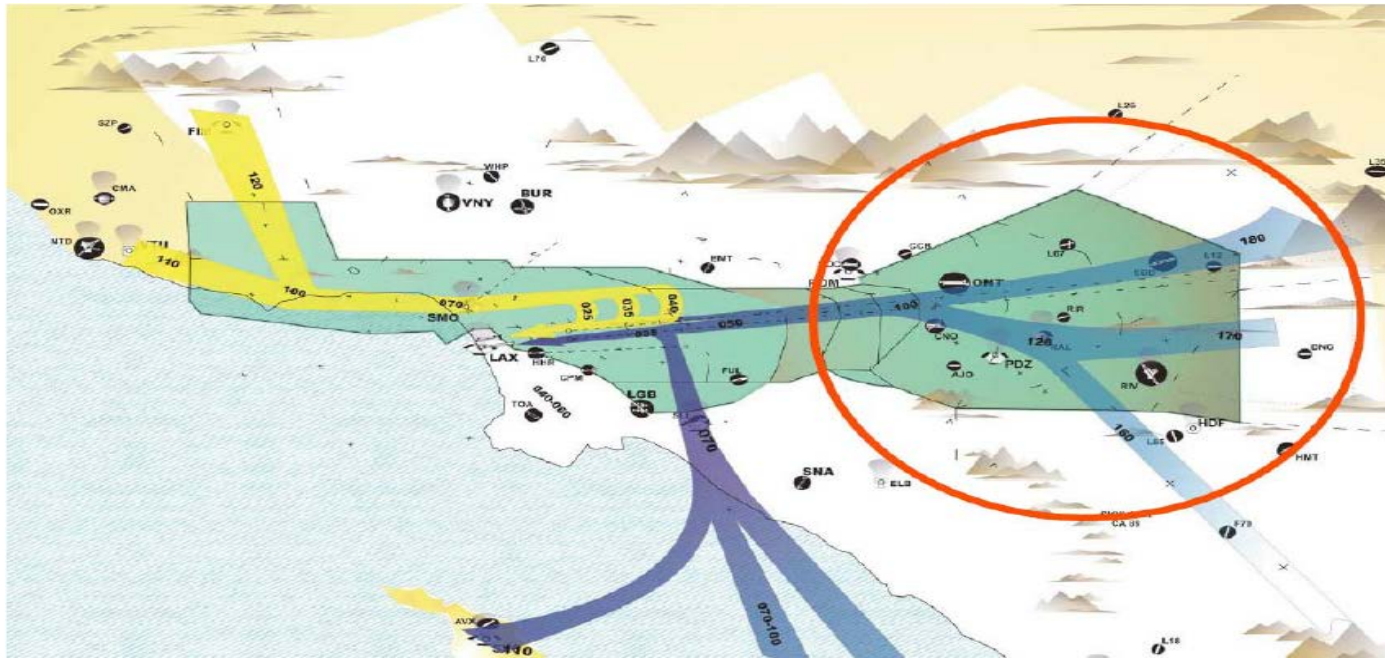


SCT and Surrounding Airspace



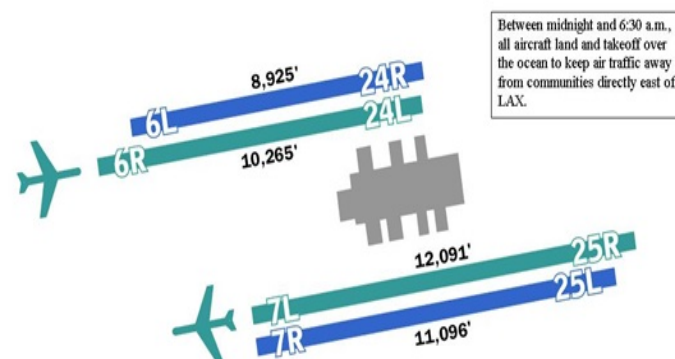
LAX ATCT Runway Configurations

- LAX has three runway configurations.
- West Plan Configuration is the preferred and most efficient configuration.



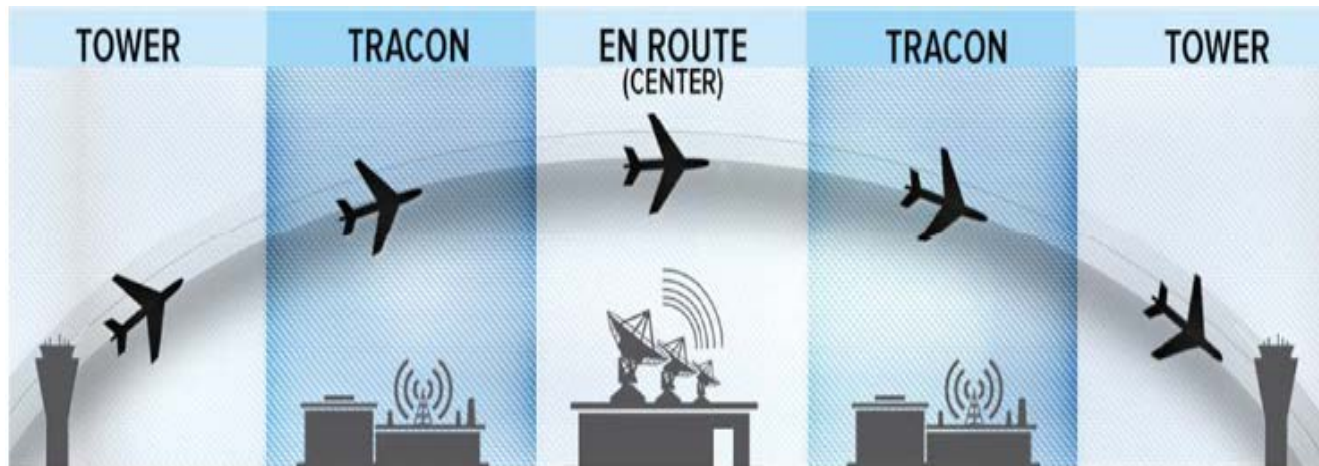
LAX ATCT Runway Configurations Cont...

- **West Plan Configuration is:**
 - Departing 24L and 25R
 - Arriving 24R and 25L
- **East Plan Configuration is:**
 - Departing 06R and 07L
 - Arriving 06L and 07R
- **Over-Ocean Configuration**
 - Departing 25R
 - Arriving 06R



Air Traffic by the Numbers

- Every day, the FAA's Air Traffic Organization (ATO) provides service to more than 43,000 flights and 2.6 million airline passengers across more than 29 million square miles of airspace.
- In Fiscal Year (FY) 2019, SCT TRACON provided service to 2,250,605 flights, averaging over 6,100 flights per day. In FY 2019, LAX provided service to 702,646 flights, averaging over 1,900 flights per day.



In Conclusion

