

October 5, 2012

**NOTICE OF PREPARATION AND NOTICE OF A PUBLIC SCOPING  
MEETING FOR AN ENVIRONMENTAL IMPACT REPORT**

**PROJECT NAME:** Los Angeles International Airport (LAX) Runway 7L/25R Runway Safety Area (RSA) Project and Associated Improvements (proposed Project)

**PROJECT LOCATION/ADDRESS:** On the South Airfield of the LAX property in the City of Los Angeles, County of Los Angeles

**COMMUNITY PLANNING AREA:** LAX Plan

**COUNCIL DISTRICT:** 11 – Rosendahl

**DUE DATE FOR PUBLIC COMMENTS:** Monday, November 5, 2012 by 5:00 p.m.

Los Angeles World Airports (LAWA), a proprietary department of the City of Los Angeles, will be the lead agency and will prepare an Environmental Impact Report (EIR) for the project identified above (proposed Project). LAWA requests your comments as to the scope and content of the EIR. The purpose of the scoping meeting, as further described below, is also focused on receiving input from the public as to what areas the EIR should study.

The Project description, requested permits and approvals, and the potentially significant environmental effects of the proposed Project are set forth below. Also included below are the date, time and location of the scoping meeting that will be held in order to solicit input regarding the content of the Draft EIR. The scoping meeting will be in an open house format. A copy of the Initial Study prepared for the proposed Project is available for review at the LAX website at: <http://www.ourlax.org> and at the locations listed below:

Westchester-Loyola Village Branch Library  
7114 W. Manchester Ave.  
Los Angeles, CA 90045

El Segundo Library  
111 W. Mariposa Avenue  
El Segundo, CA 90245

**PROJECT DESCRIPTION:** The intent of the proposed Project is to comply with the *Transportation, Treasury, Housing and Urban Development, the Judiciary, District of Columbia, and Independent Agencies Appropriations Act, 2006* (Public Law [P.L.] 109-115), November 30, 2005. P.L. 109-115 requires completion of RSA improvements by airport sponsors that hold a certificate under Title 14, Code of Federal Regulations (CFR), Part 139, *Certification and Operations: Land Airports Serving Certain Air Carriers*, such as LAX, to meet FAA airport design standards by December 31, 2015. LAWA prepared an RSA Practicability Study and concluded that the existing RSA for Runway 7L/25R does not meet current airport design standards and improvements to the RSA were needed.

Additionally, Runway 7L/25R, as the primary departure runway on the south airfield, and its connecting taxiways, which provide the main access to both South Airfield runways, handle a large amount of traffic. Due to heavy usage, the pavement on the east end of both the runway and taxiways has deteriorated over the years and needs reconstruction. The reconstruction of the runway and taxiway will force their temporary closure and necessitate the extension of Taxiway C to maintain access to Runway 7R/25L. To comply with FAA standards for taxiway centerline to fixed or movable objects, Air Freight Building No. 8 will be demolished and the Ground Service Equipment (GSE) maintenance uses currently housed in the building, relocated to a new GSE Maintenance Facility. It should be noted that the proposed Project would not result in increased or decreased aviation activity at LAX compared to existing conditions.

Specifically, the proposed Project would include: (1) *Runway 7L/25R RSA Improvements* including extending the Runway 7L/25R pavement; grading and compacting the RSA; constructing blast fences west of the Runway 7L extension; several taxiways modifications as necessary; relocating the existing Localizer Antenna and blast fences to the west; replacing the existing Approach Lighting System (ALS) towers with in-pavement lights; and modifying the existing Runway and Taxiway lighting and markings in the newly constructed pavements; (2) *Pavement Reconstruction of the Eastern Portions of Runway 7L/25R and Taxiway B* including connecting taxiways and installation of in-pavement approach lights; (3) *Taxiway C Extension and Demolition of Air Freight Building No. 8* including realigning an existing service road north of Taxiway C; realignment and eastward extension of Taxiway C; and the paving of the Air Freight Building No. 8 site; and (4) *Construction of a GSE Maintenance Facility* which

includes removal and relocation of several temporary structures (trailers) present at the proposed site; removal of existing concrete; grading and excavation; and the installation of utilities.

**REQUESTED PERMITS/APPROVALS:** LAWA has principal responsibility for approving and carrying out the proposed Project. Approvals required for implementation of the proposed Project may include, but are not limited to, the following: Several Federal Aviation Administration (FAA) approvals and procedures modifications; South Coast Air Quality Management District (SCAQMD) review; Consultation with the California Department of Fish and Game (CDFG); Permits and/or approvals from the California State Water Quality Control Board (SWQCB) and/or the Regional Water Quality Control Board (RWQCB); LAWA LAX Specific Plan Compliance Review; Certification of the Final EIR and associated Mitigation Monitoring and Reporting Program; several permits and/or approvals as needed from the Los Angeles City Department of Public Works including the Bureaus of Sanitation and Engineering, Los Angeles City Fire Department and the Los Angeles City Department of Building and Safety; and other federal, state, or local approvals, permits or actions that may be necessary for the proposed Project.

**ENVIRONMENTAL FACTORS POTENTIALLY AFFECTED:** Aesthetics, Air Quality, Greenhouse Gas Emissions, Hazards and Hazardous Materials, Hydrology/Water Quality, Noise, Transportation, and are proposed to be addressed in the EIR.

Impacts to Agricultural Resources, Biological Resources, Cultural Resources, Geology/Soils, Land Use/Planning, Mineral Resources, Population/Housing, Public Services, Recreation, Utilities and Public Systems have been found to be less than significant and through the analysis in the Initial Study and are not proposed for further analysis in the EIR.

**PUBLIC SCOPING MEETING:** A public Scoping Meeting in an open house format will be held to receive public comments regarding the scope and content of the environmental information to be included in the EIR. LAWA encourages all interested individuals and organizations to attend this meeting. The location, date, and time of the public scoping meeting for the proposed Project are as follows:

**Date and Time:** Wednesday, October 17, 2012, 6:00 pm - 8:00 pm

Arrive any time to speak one-on-one with LAWA staff and consultants.

**Location:** Proud Bird Restaurant  
11022 Aviation Boulevard  
Los Angeles, CA 90045

LAWA welcomes all comments regarding potential environmental impacts of the Project and the issues to be addressed in the EIR. **All comments will be considered in the preparation of the EIR. Written comments must be submitted to this office by Monday, November 5, 2012.** Written comments will also be accepted at the Scoping Meeting described above.

Please direct your comments to:

Mr. Herb Glasgow, Chief of Airport Planning I  
City of Los Angeles, Los Angeles World Airports  
1 World Way, Room 218B  
Los Angeles, CA 90045  
Telephone: (424) 646-5180  
Email: hglasgow@lawa.org

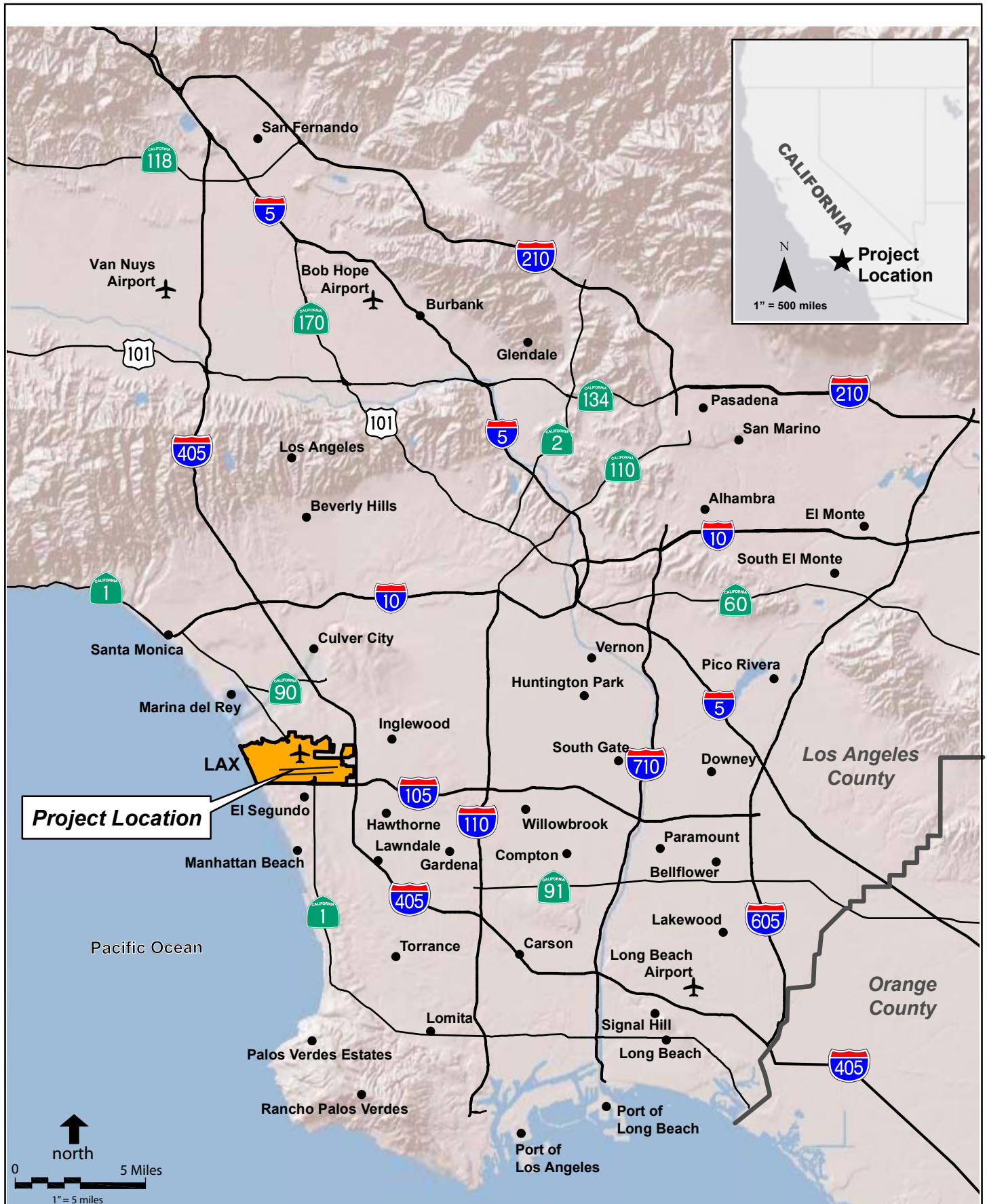


HERB GLASGOW

Chief of Airport Planning I

Enclosures:

Figure 1: Regional Map  
Figures 2 & 3: Proposed Project Maps (2)  
Figure 4: Scoping Meeting Location Map

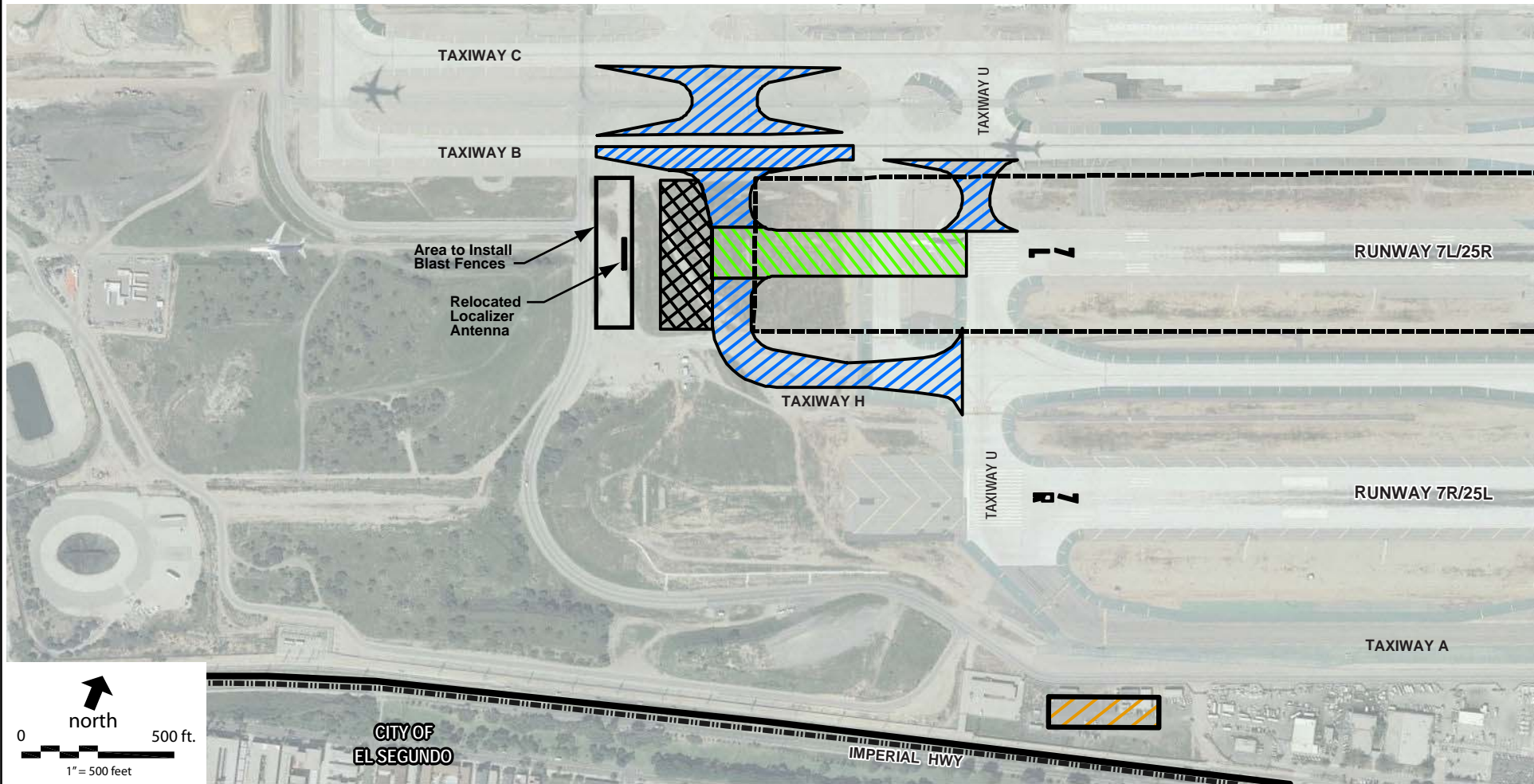
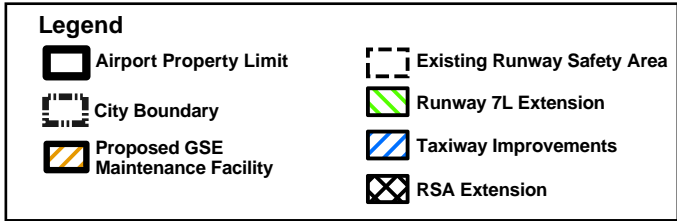
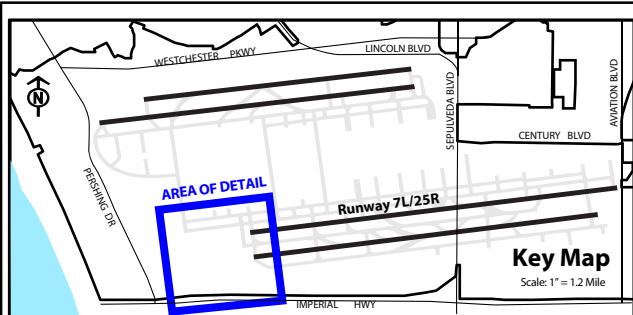


Source: LAWA 2012; ESRI Maps and Data - September 2012; Prepared by: URS Corporation.

**FIGURE  
1**

**REGIONAL MAP**

**Initial Study  
LAX Runway 7L/25R RSA Project  
and Associated Improvements**

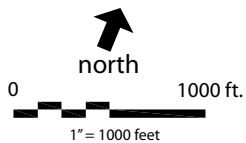
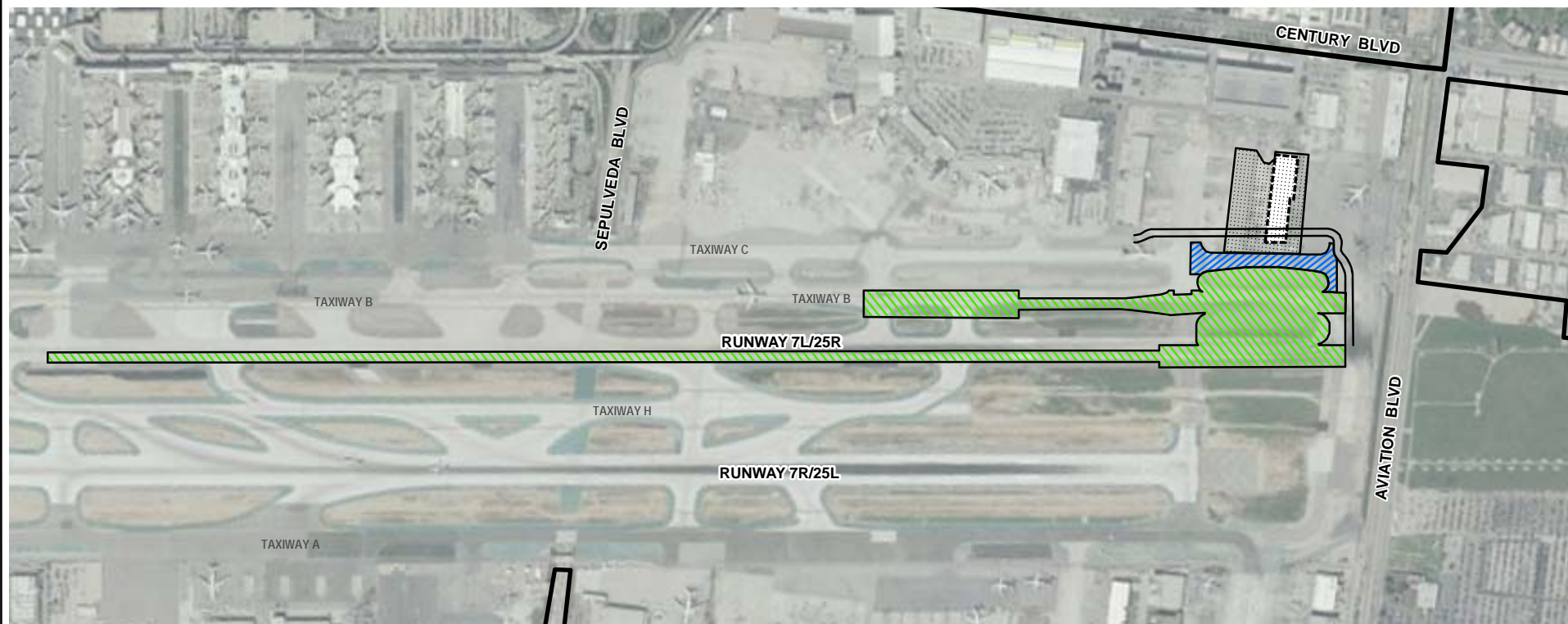
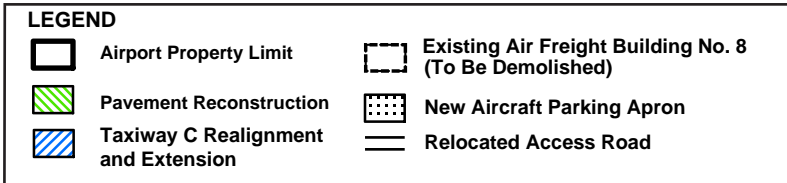
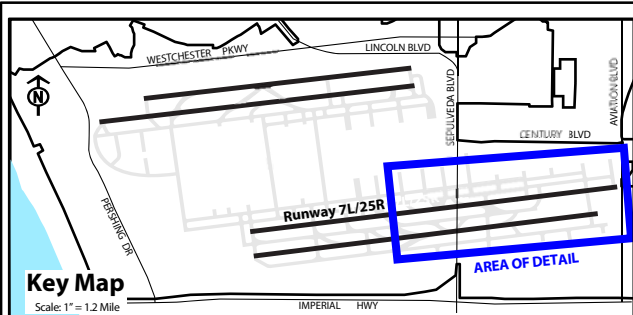


Sources: Runway 7L-25R Safety Area (RSA) Practicability Study for Los Angeles International Airport (Ricondo & Associates, December 2009); ESRI Maps & Data September 2012; Prepared by: URS Corporation.

**FIGURE 2**

**PROPOSED PROJECT  
WEST END IMPROVEMENTS**

**Notice of Preparation  
LAX Runway 7L/25R RSA Project  
and Associated Improvements**

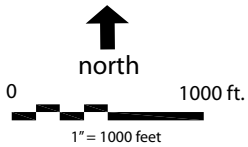


Sources: Runway 7L-25R Safety Area (RSA) Practicability Study for Los Angeles International Airport (Ricordo & Associates, December 2009); Runway 25R & Taxiway B East End Rehabilitation and Taxiway C Extension Preliminary Engineer's Report (HNTB, 2011); ESRI Maps & Data September 2012; Prepared by: URS Corporation.

**FIGURE  
3**

**PROPOSED PROJECT  
EAST END IMPROVEMENTS**

**Notice of Preparation  
LAX Runway 7L/25R RSA Project  
and Associated Improvements**



Source: ESRI Maps and Data, September, 2012; Prepared by: URS Corporation.

**FIGURE 4**

**SCOPING MEETING LOCATION THE PROUD BIRD RESTAURANT**