

Appendix E1-3
LAX SPECIFIC PLAN AMENDMENT STUDY REPORT

**Runway 6L/24R Relocated North Taxiway-
Taxilane Concepts**

February 2011

Prepared for:

Los Angeles World Airports
One World Way
Los Angeles, California 90045

Prepared by:

Ricondo & Associates, Inc.
1917 Palomar Oaks Way Suite 350
Carlsbad, CA 92008

Table 1*Los Angeles International Airport***Taxiway D and Taxilane E Relocation - Design Criteria (feet)**

	Option 1	Option 2	Option 3
Runway - Taxiway	400	500	500
Taxiway - Taxilane	267	261 ^{1/}	284 ^{1/}
Taxilane - Service Road E	142	112.5	142
Service Road E Width	25	25	25
Runway to Parking Limit Line	834	898.5	951
Total Gates Affected	7	12	16

Notes: 1/ FAA Draft Engineering Brief (EB) #78 "Application of New Linear Equations for New Large Airplane Taxiway and Taxilane Separation Criteria". Incorporation of EB #78 into FAA Advisory Circular (AC) 150/5300-13, *Airport Design*, is pending.

Source: Los Angeles International Airport ALP, HNTB, August 2010; AC 150/5300-13 Airport Design, FAA, January 3, 2011;

March 3, 2011

PathPlanner A5, SimtraAerotech, 2010; Ricondo & Associates, Inc.

Prepared by: Ricondo & Associates, Inc.

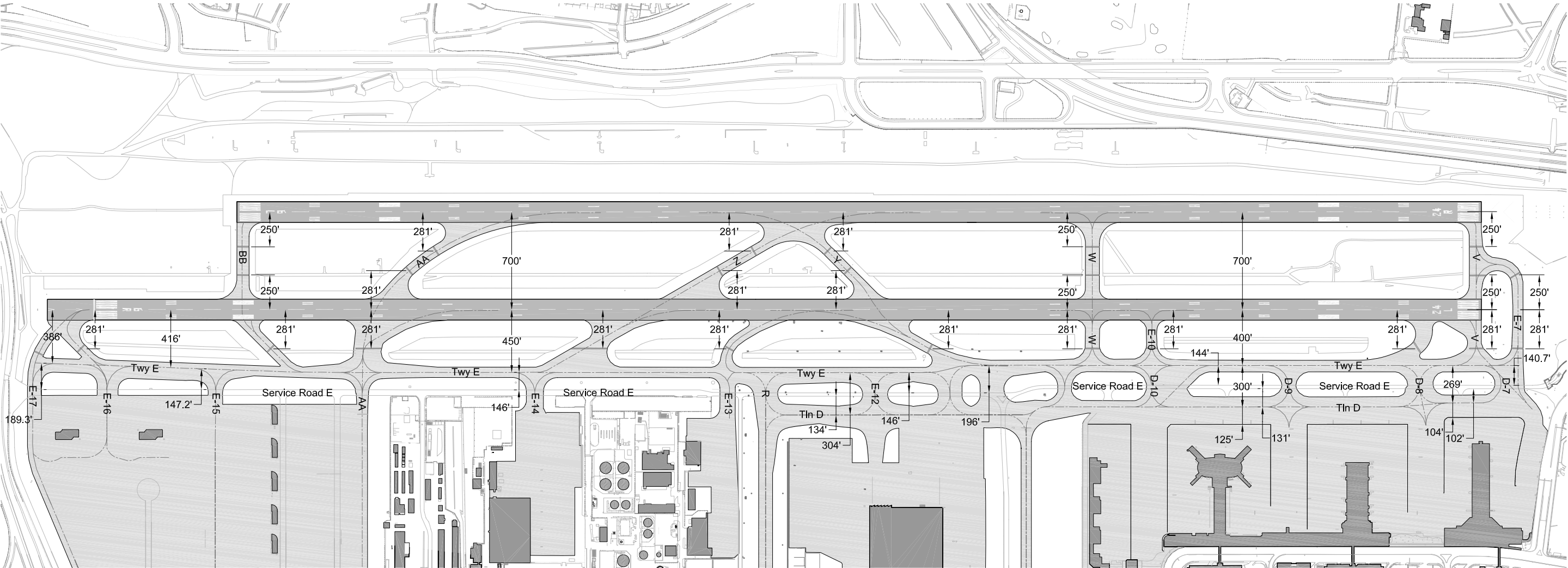
Table 2

Los Angeles International Airport

Taxiway D and Taxilane E Relocation - Gate Impact by Terminal and ADG

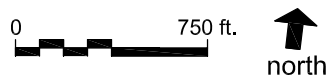
		ADG ^{1/}	Option 1					Option 2					Option 3						
			III	IV	V	VI	Total	III	IV	V	VI	Total	III	IV	V	VI	Total		
Terminal 1	Eliminated		2	2	n/a	n/a	4	2	2	n/a	n/a	4	3	2	n/a	n/a	5		
	Downsized / Realigned		-	-	n/a	n/a	-	-	-	n/a	n/a	-	-	1	n/a	n/a	1		
	Total Affected Gates							4						4					
Terminal 2	Eliminated		n/a	-	-	n/a	-	n/a	-	-	n/a	-	n/a	-	-	n/a	-		
	Downsized / Realigned		n/a	-	2	n/a	2	n/a	-	2	n/a	2	n/a	-	4	n/a	4		
	Total Affected Gates							2						2					
Terminal 3	Eliminated		-	-	-	n/a	-	2	-	-	n/a	2	2	1	1	n/a	4		
	Downsized / Realigned		-	-	1	n/a	1	-	1	1	n/a	2	-	-	-	n/a	-		
	Total Affected Gates							1						4					
TBIT	Eliminated		-	n/a	-	-	-	1	n/a	-	-	1	1	n/a	-	-	1		
	Downsized / Realigned		-	n/a	-	1	1	-	n/a	-	1	1	-	n/a	-	1	1		
	Total Affected Gates							1						2					
ALL	Eliminated		2	2	-	-	4	5	2	-	-	7	6	3	1	-	10		
	Downsized / Realigned		-	-	3	1	4	-	1	3	1	5	-	1	4	1	6		
	Total Affected Gates							8						12					

Note: 1/ Airplane Design Group per wingspans listed in FAA AC 150/5300-13, *Airport Design*.



Source: Los Angeles International Airport ALP, HNTB, August 2010; Taxiway E to Service Road E Dimension Exhibit, HNTB, February 14, 2011; Ricondo & Associates, Inc.
Prepared by: Ricondo & Associates, Inc.

Exhibit 1

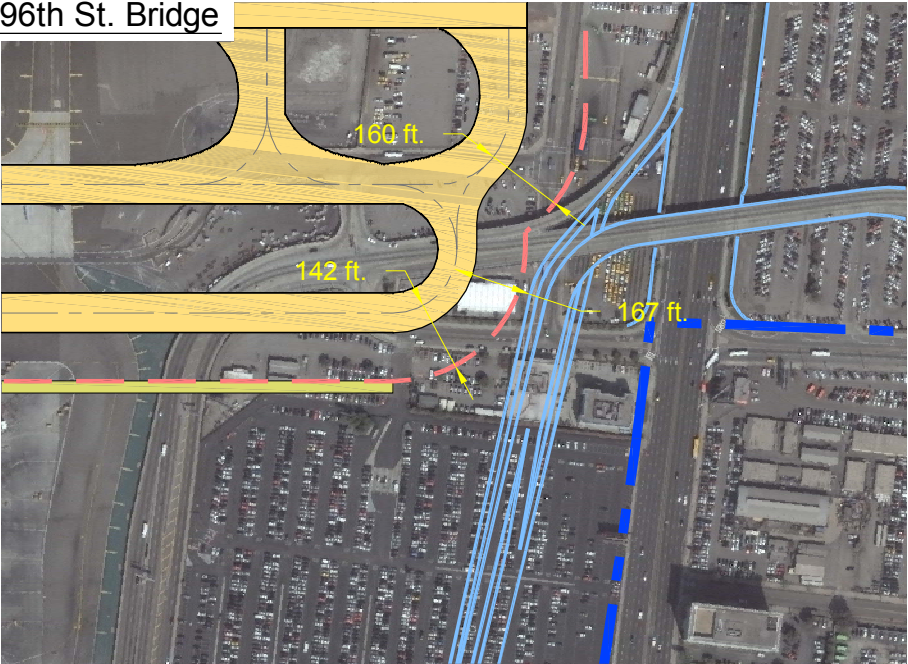


Existing North Airfield

Overview



96th St. Bridge

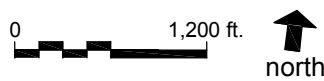


Terminal Area



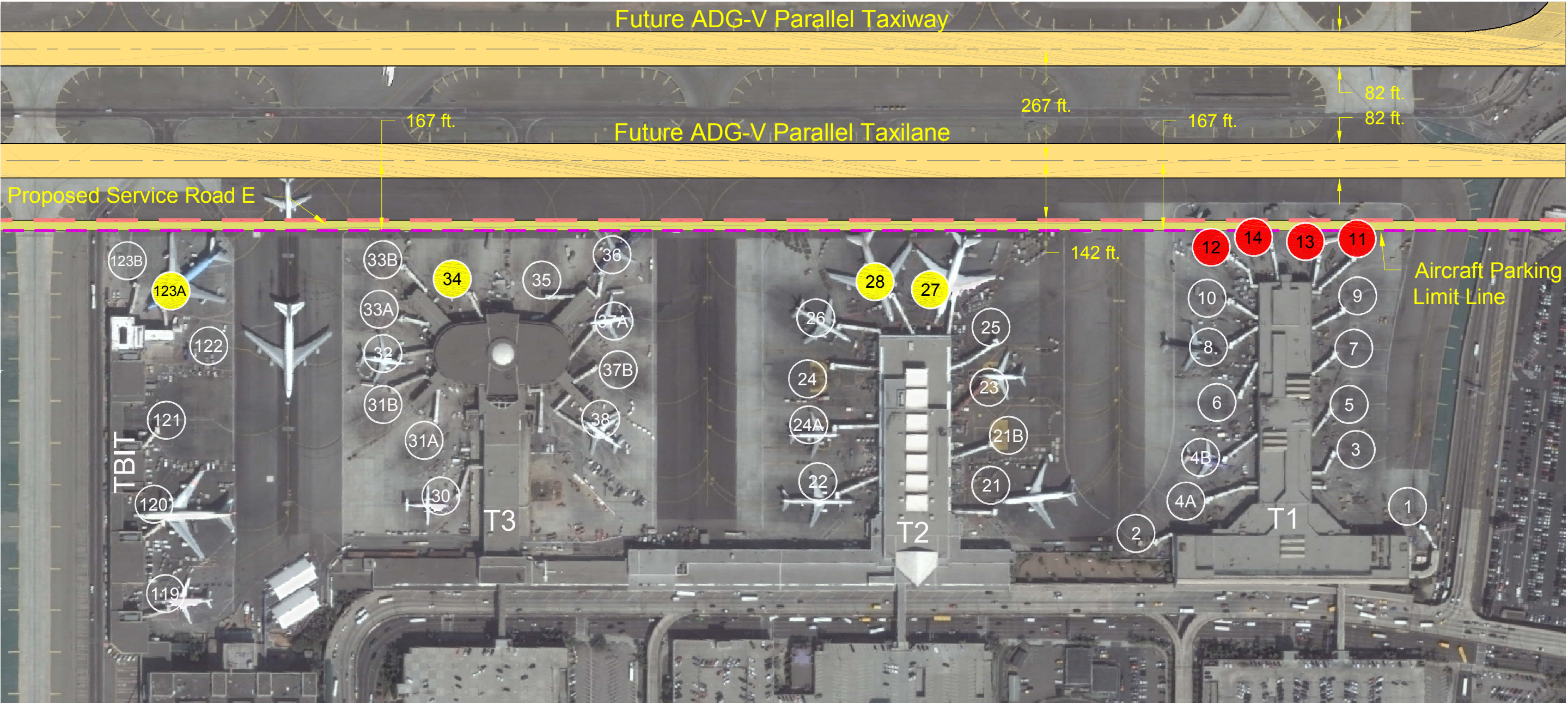
- Legend
- New Airfield Pavement
 - Proposed Service Road E
 - ADG-V Taxilane Object Free Area (OFA)
 - Aircraft Parking Limit Line
 - 96th St. Bridge Concept

Notes: 1. Airport Boundary is approximate.
Source: Los Angeles International Airport ALP, Landrum & Brown, 2005; AC 150/5300-13 Airport Design , FAA, January 3, 2011 ; STV Incorporated, July 2010; URS, June 2010; Aerial Photography, Digital Globe, March 12, 2008; Ricondo & Associates, Inc.
Prepared by: Ricondo & Associates, Inc.



Taxiway E & Taxilane D Relocation - Terminal Impacts
ADG-V Taxiway - ADG-V Taxilane - Service Road

Exhibit 2

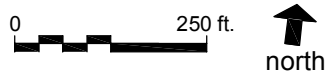


Notes: 1. Service road is 25 ft. wide.

Source: Los Angeles International Airport ALP, Landrum & Brown, 2005; AC 150/5300-13 Airport Design , FAA, January 3, 2011 ; Aerial Photography, Digital Globe, March 12, 2008; PathPlanner A5, SimtraAerotech, 2010; Ricondo & Associates, Inc.
Prepared by: Ricondo & Associates, Inc.

- Legend**
- New Airfield Pavement
 - Proposed Service Road E
 - ADG-V Taxilane OFA
 - Aircraft Parking Limit Line

Gate Information		Largest Airplane Design Group at Gate				Total
		III	IV	V	VI	
✖	Eliminated	2	2	-	-	4
✖	Downsized \ Realigned	-	-	3	1	4
○	No Change	19	6	10	-	35

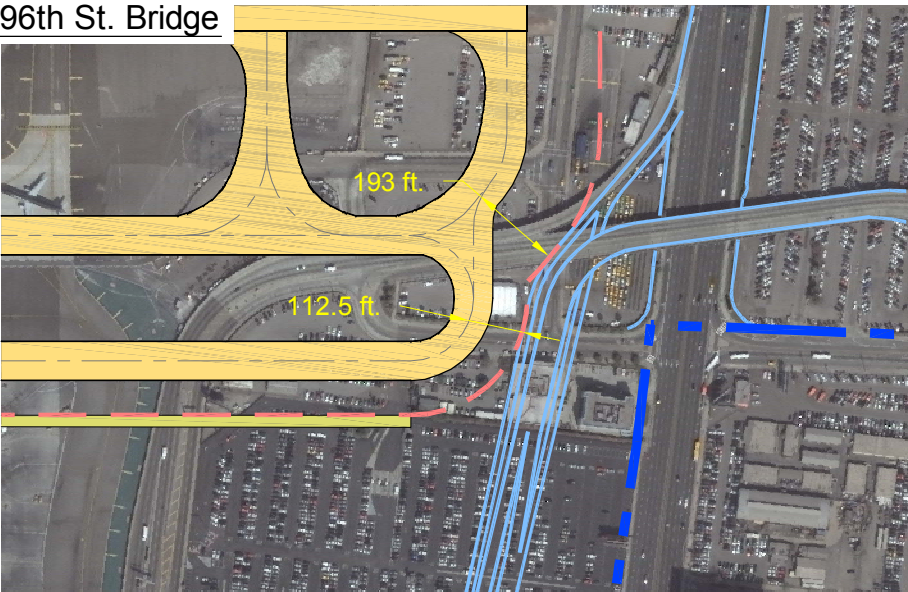


Taxiway E & Taxilane D Relocation - Terminal Impacts
ADG-V Taxiway - ADG-V Taxilane - Service Road

Overview



96th St. Bridge



Notes: 1. Airport Boundary is approximate.
2. Mixed ADG Taxiway-Taxilane Centerline Separation calculated using FAA Draft Engineering Brief #78 as presented at the ACI-NA Operations and Technical Affairs Seminar on October 10-11, 2009. Final FAA approval pending.

Source: Los Angeles International Airport ALP, Landrum & Brown, 2005; AC 150/5300-13 Airport Design, FAA, January 3, 2011; Revised NLA Airport Design Criteria for AC 150/5300-13, FAA, July 1, 2010; Draft Engineering Brief #78, FAA, September 20, 2009; STV Incorporated, July 2010; URS, June 2010; Aerial Photography, Digital Globe, March 12, 2008; Ricondo & Associates, Inc.
Prepared by: Ricondo & Associates, Inc.

Terminal Area



Legend
New Airfield Pavement
Proposed Service Road E
ADG-IV Taxilane Object Free Area (OFA)
Aircraft Parking Limit Line
96th St. Bridge Concept



Taxiway E & Taxilane D Relocation - Terminal Impacts
ADG-VI Taxiway - ADG-IV Taxilane - Service Road

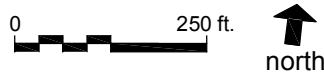
Exhibit 4



Notes: 1. Service road is 25 ft. wide.
2. Mixed ADG Taxiway-Taxilane Centerline Separation calculated using FAA Draft Engineering Brief #78 as presented at the ACI-NA Operations and Technical Affairs Seminar on October 10-11, 2009. Final FAA approval pending.

Source: Los Angeles International Airport ALP, Landrum & Brown, 2005; AC 150/5300-13 Airport Design , FAA, January 3, 2011 ; Revised NLA Airport Design Criteria for AC 150/5300-13, FAA, July 1, 2010; Draft Engineering Brief #78, FAA, September 20, 2009; PathPlanner A5, SimtraAerotech, 2010; Aerial Photography, Digital Globe, March 12, 2008; Ricondo & Associates, Inc.
Prepared by: Ricondo & Associates, Inc.

Gate Information		Largest Airplane Design Group at Gate				Total
		III	IV	V	VI	
✖	Eliminated	5	2	-	-	7
✕	Downsized \ Realigned	-	1	3	1	5
○	No Change	16	5	10	-	31



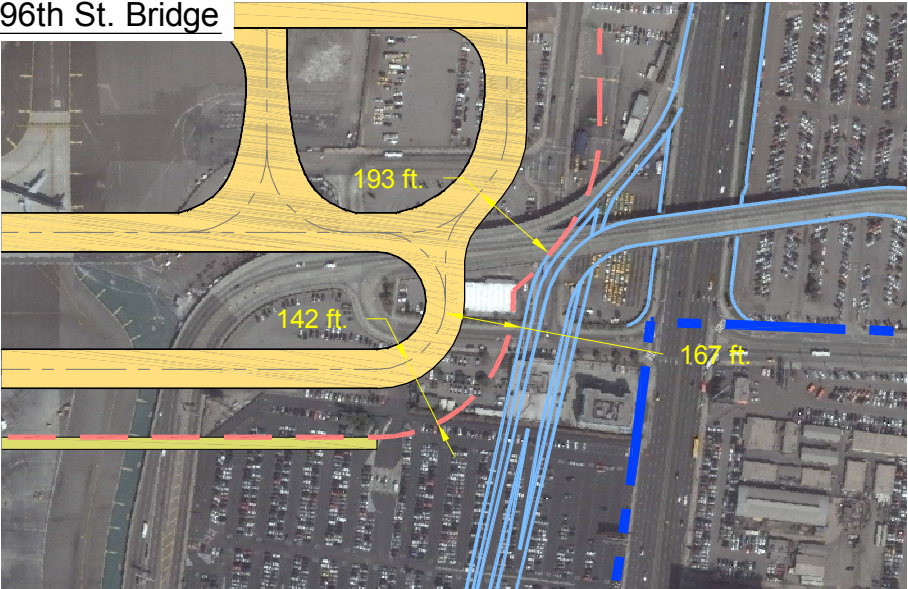
Taxiway E & Taxilane D Relocation - Terminal Impacts
ADG-VI Taxiway - ADG-IV Taxilane - Service Road

Exhibit 5

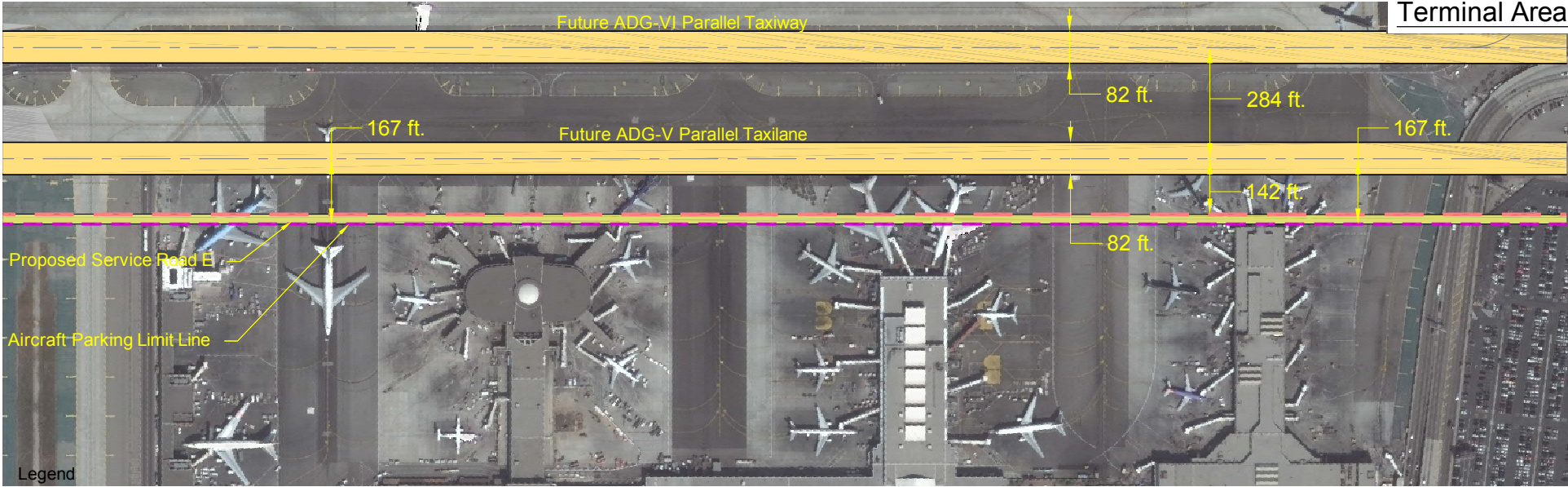
Overview



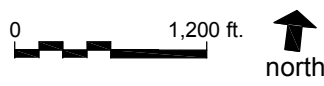
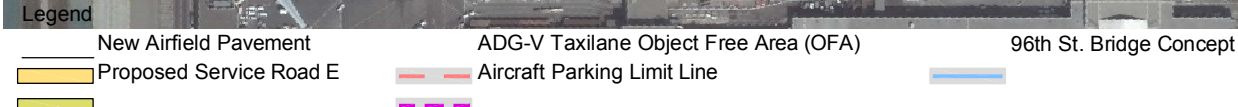
96th St. Bridge



Terminal Area

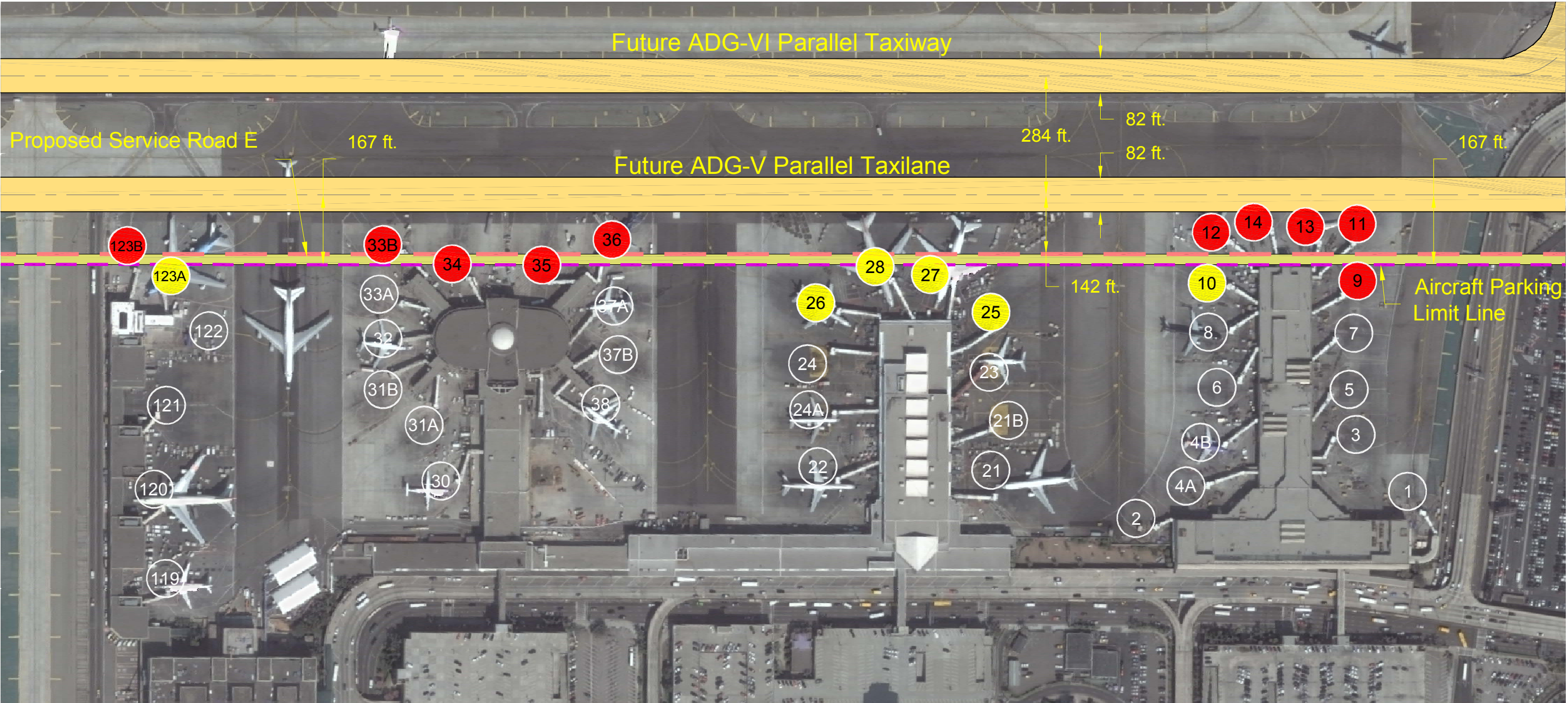


Notes: 1. Airport Boundary is approximate.
2. Mixed ADG Taxiway-Taxilane Centerline Separation calculated using FAA Draft Engineering Brief #78 as presented at the ACI-NA Operations and Technical Affairs Seminar on October 10-11, 2009. Final FAA approval pending.
Source: Los Angeles International Airport (LAX) Environmental Impact Statement, 2009; AC 150/5300-13 Airport Design, FAA, January 3, 2011; Revised NLA Airport Design Criteria for AC 150/5300-13, FAA, July 1, 2010; Draft Engineering Brief #78, FAA, September 20, 2009; STV Incorporated, July 2010; URS, June 2010; Aerial Photography, Digital Globe, March 12, 2008; Ricondo & Associates, Inc.
Prepared by: Ricondo & Associates, Inc.



Taxiway E & Taxilane D Relocation - Terminal Impacts
ADG-VI Taxiway - ADG-V Taxilane - Service Road

Exhibit 6



Notes: 1. Service road is 25 ft. wide.
2. Mixed ADG Taxiway-Taxilane Centerline Separation calculated using FAA Draft Engineering Brief #78 as presented at the ACI-NA Operations and Technical Affairs Seminar on October 10-11, 2009. Final FAA approval pending.

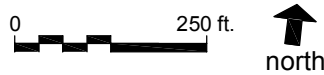
Source: Los Angeles International Airport ALP, Landrum & Brown, 2005; AC 150/5300-13 Airport Design - FAA, January 3, 2011; Revised NLA Airport Design Criteria for AC 150/5300-13, FAA, July 1, 2010; Draft Engineering Brief #78, FAA, September 20, 2009; PathPlanner A5, SimtraAerotech, 2010; Aerial Photography, Digital Globe, March 12, 2008; Ricondo & Associates, Inc.
Prepared by: Ricondo & Associates, Inc.

Legend

- New Airfield Pavement
- Proposed Service Road E
- Aircraft Parking Limit Line

Gate Information

Resolution	Largest Airplane Design Group at Gate				Total
	III	IV	V	VI	
Eliminated	6	3	1	-	10
Downsized / Realigned	-	1	4	1	6
No Change	15	4	8	-	27



Taxiway E & Taxilane D Relocation - Terminal Impacts
ADG-VI Taxiway - ADG-V Taxilane - Service Road

Exhibit 7

