



STANDARD PLANS

FOR

AIRFIELD IMPROVEMENTS

At The

LOS ANGELES INTERNATIONAL AIRPORT

In the City of Los Angeles, California



z:\46357_LAWA_APM5\00_CADD\X\LAWA_STD\00.00.dwg Nov 14, 2014 - 12:52pm

REVISION NO.	DESCRIPTION	DATE

APPROVED BY:
LAWA STAFF
CHECKED BY:
ANTONE FERRELLA
DRAWN BY:
WILLIAM P. MAREK
DATE:
11-14-2014



LAWA STANDARD PLANS COVER SHEET	
	LAWA STANDARD PLAN NUMBER 00.00 SHEET: 1 OF 28



Sheet List Table	
PLAN NO.	TITLE
1	COVER SHEET
2	TABLE OF CONTENTS
3	AOA FENCING
4	FENCE
5	BARRICADE DETAILS
6	TEMPORARY BLOCKING PLATES
7	F.O.D. PROTECTION
8	EROSION CONTROL
9	EXISTING UTILITY PROTECTION 1
10	EXISTING UTILITY PROTECTION 2
11	PAVEMENT JOINT DETAILS - 1
12	PAVEMENT JOINT DETAILS - 2
13	SLAB REPLACEMENT DETAILS 1
14	SLAB REPLACEMENT DETAILS 2
15	PAVEMENT SECTIONS
16	GRADING AND DRAINAGE DETAILS 1
17	GRADING AND DRAINAGE DETAILS 2
18	RUNWAY MARKING
19	TAXIWAY MARKING
20	SURFACE PAINTED SIGNS
21	AIRCRAFT HOLD MARKING
22	APRON GATE MARKING
23	APRON SURFACE MARKING
24	SERVICE ROAD MARKING , AIRCRAFT CLEARANCE
25	TEMPORARY ELECTRICAL
26	BASE CAN INSTALLATION IN PROPOSED PCC PAVEMENT
27	BASE CAN INSTALLATION IN PROPOSED PCC PAVEMENT
28	TAXIWAY AND GUARD LIGHT INSTALLATION DETAILS

d:\46357_LAWA_LAPMS\00_CADD\LAX\LAWA_STD\00.01.dwg Nov 14, 2014 - 12:53pm

REVISION NO.	DESCRIPTION	DATE

APPROVED BY:
LAWA STAFF
CHECKED BY:
ANTONE FERRELLA
DRAWN BY:
WILLIAM P. MAREK
DATE:
11-14-2014

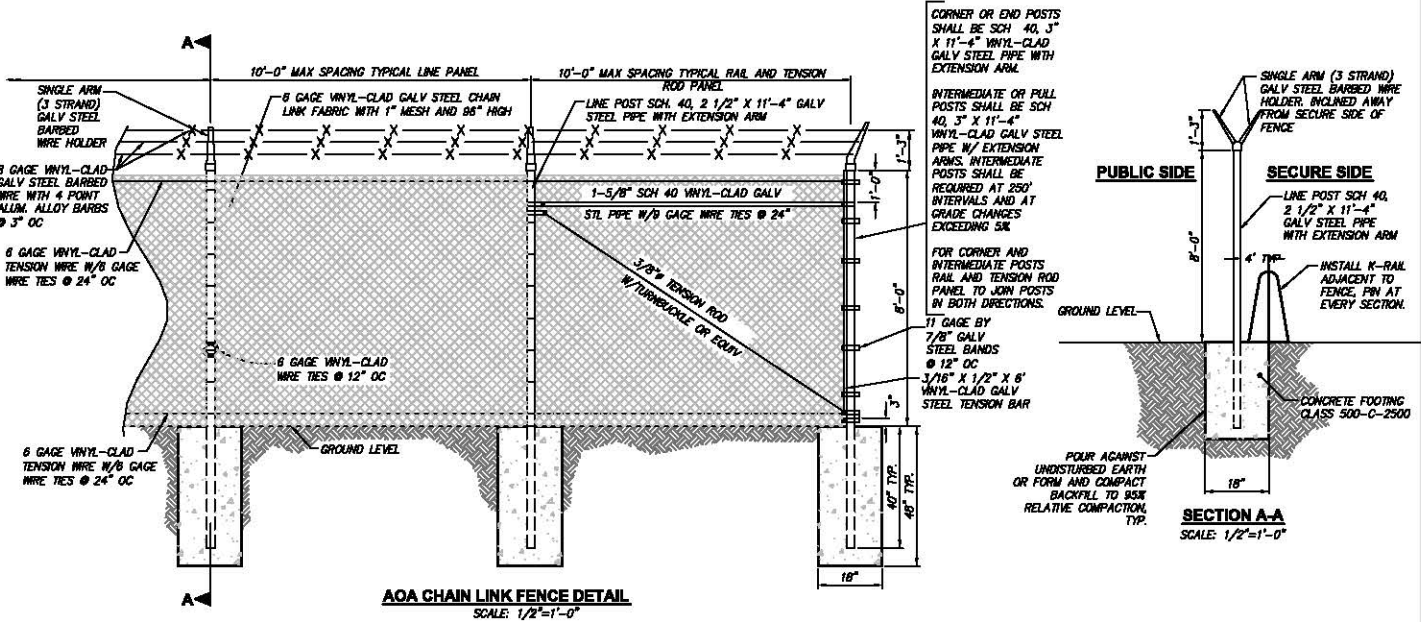


LAWA STANDARD PLANS TABLE OF CONTENTS	
	LAWA STANDARD PLAN NUMBER 00.01 SHEET: 2 OF 28



GENERAL NOTES - FENCE DETAIL

1. ALL SIZES AND GAUGES FOR PIPE POSTS, RODS, AND WIRES ARE OUTSIDE DIAMETERS WHICH INCLUDES THE VINYL COATING THICKNESS.
2. ALL FENCE MATERIAL AND FITTINGS SHALL BE OF HIGH GRADE DOMESTIC QUALITY STEEL, AND SHALL BEAR MARKINGS AS BEING SUCH.
3. THE CHAIN LINK FABRIC SHALL BE PLACED ON THE OUTWARD FACE OF THE POSTS, STRETCHED TAUT AND SECURELY FASTENED.
4. ALL EXPOSED METALS, SUCH AS NUTS AND BOLTS AND WELDED AREAS SHALL BE PAINTED WITH COLOR TO MATCH THE FENCE SYSTEM.
5. ALL NON VINYL-CLAD CHAIN LINK FENCE MATERIAL AND FITTINGS SHALL CONFORM TO STANDARD SPECIFICATIONS FOR PUBLIC WORKS CONSTRUCTION SECTION 206-6 UNLESS OTHERWISE SPECIFIED.
6. CONCRETE FOR CHAIN LINK FENCE POST FOOTINGS SHALL BE CLASS 500-C-2500.



AOA CHAIN LINK FENCE DETAIL
SCALE: 1/2"=1'-0"

SECTION A-A
SCALE: 1/2"=1'-0"

d:\46357_LAWA_APMIS\00_CADD\LAWA_STD_01.dwg Nov 14, 2014 - 12:56pm

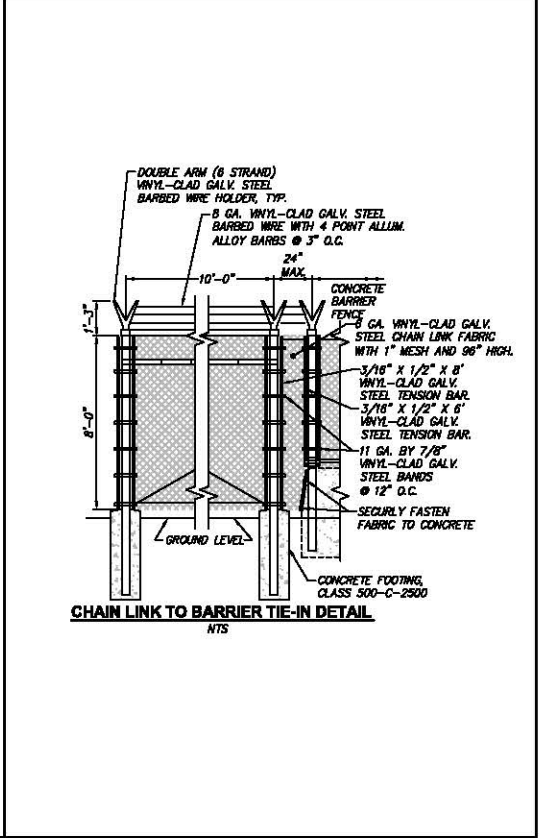
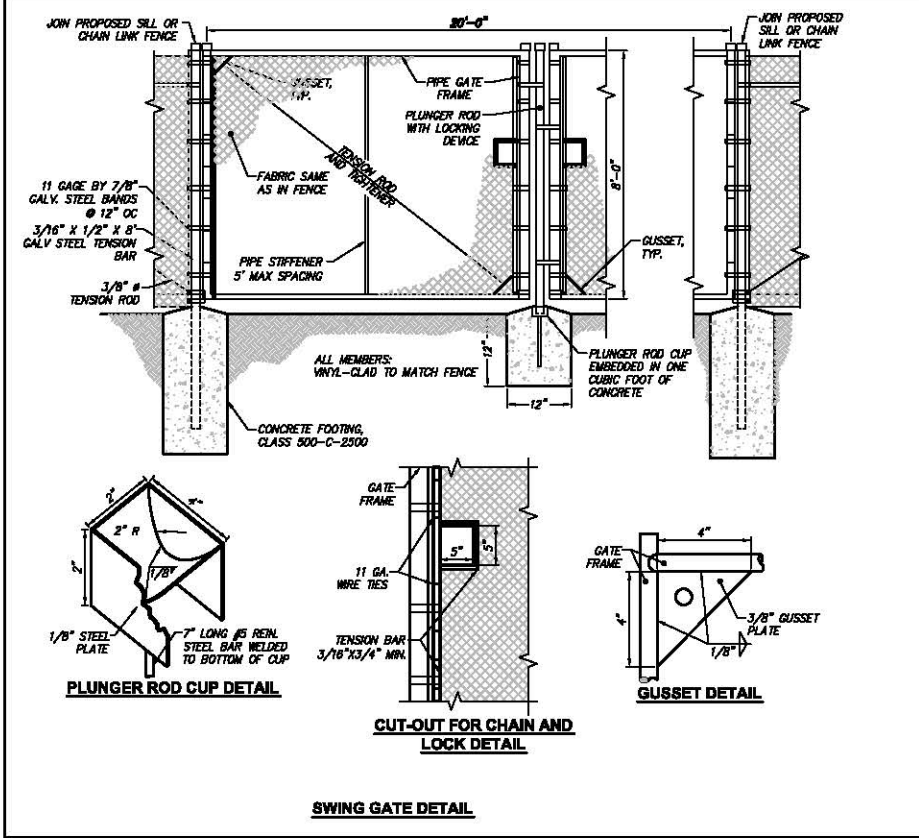
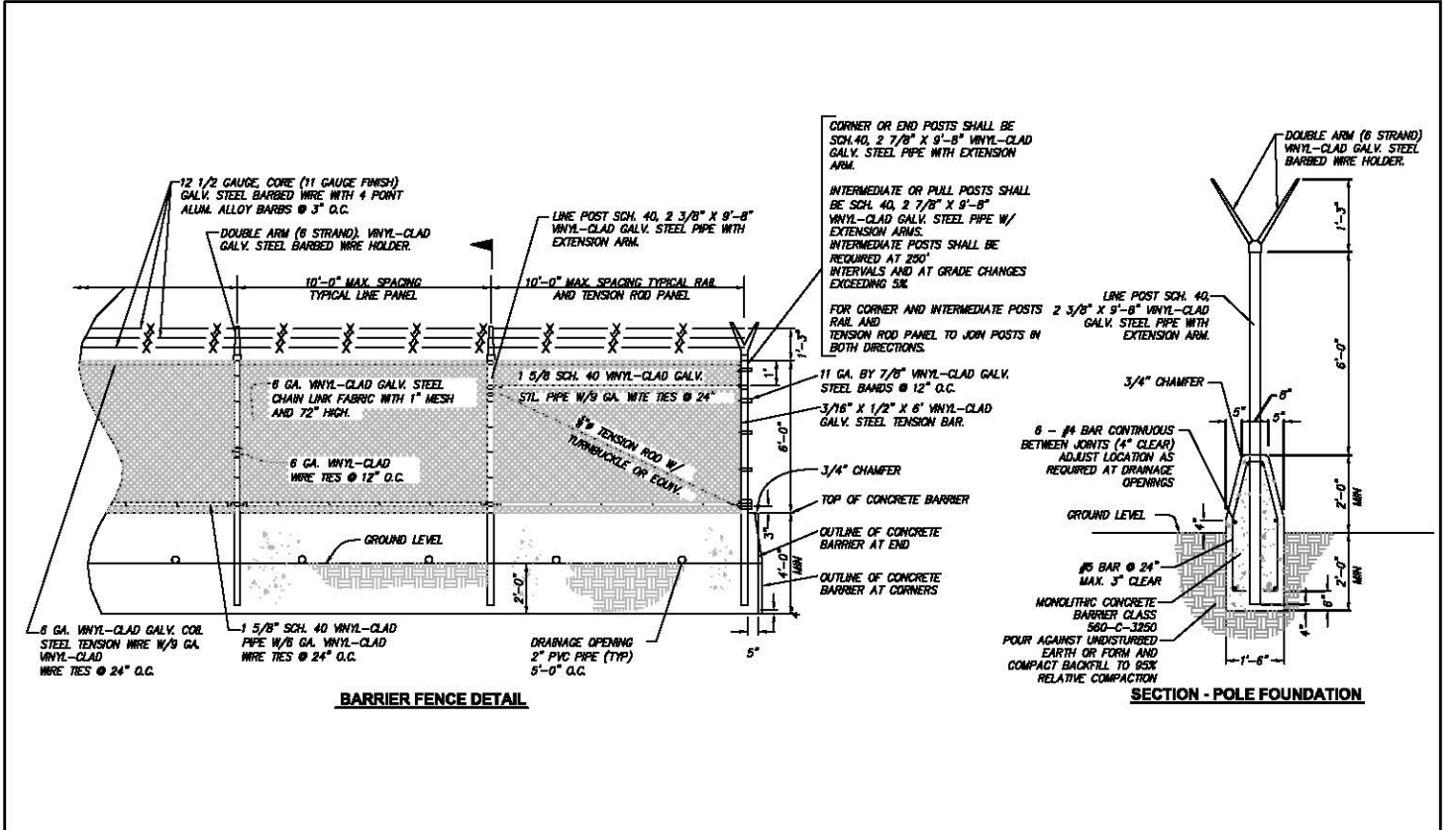
REVISION NO.	DESCRIPTION	DATE

APPROVED BY:
LAWA STAFF
CHECKED BY:
ANTONE FERMELLA
DRAWN BY:
WILLIAM P. MAREK
DATE:
11-14-2014



LAWA STANDARD PLANS
AOA FENCING

LAWA STANDARD PLAN NUMBER
01.01
SHEET: 3 OF 28



d:\6357_LAWA_APIMS\00_CADD\LAWA_STD_01.dwg Nov 14, 2014 - 12:57pm

REVISION NO.	DESCRIPTION	DATE

APPROVED BY:
LAWA STAFF

CHECKED BY:
ANTONE FERMELLA

DRAWN BY:
WILLIAM P. MAREK

DATE:
11-14-2014

HNTB

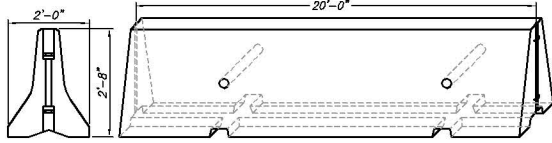
LAWA STANDARD PLANS

FENCE

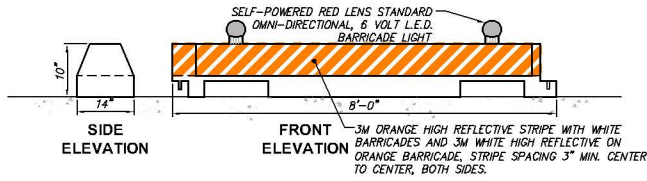
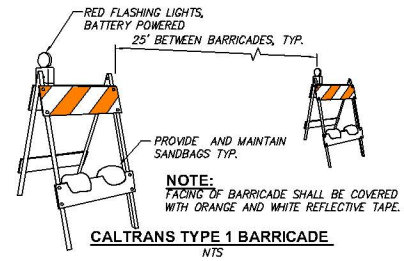
LAWA STANDARD PLAN NUMBER

01.02

SHEET: 4 OF 28

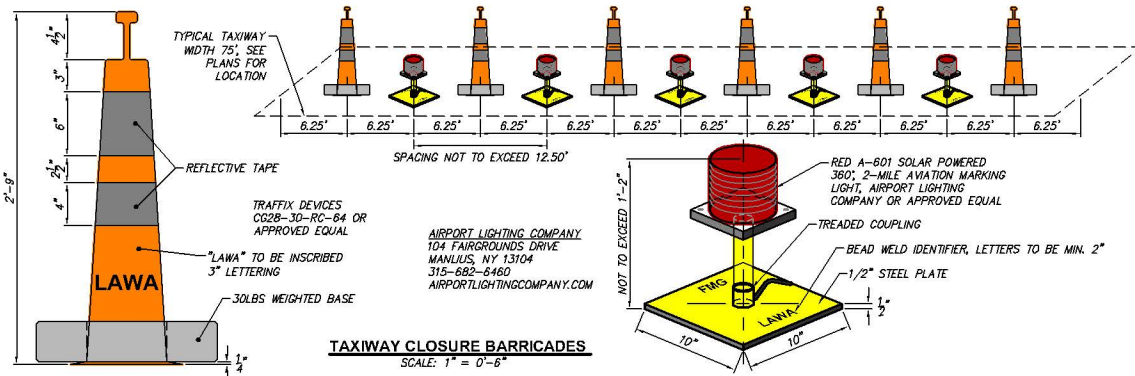
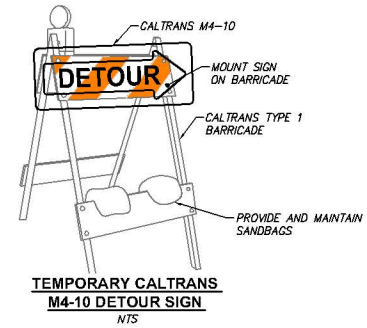


- NOTE:**
1. SEE CALTRANS 2008 STANDARD PLAN T3* FOR K-RAIL DETAIL OR APPROVED EQUAL.
 2. K-RAIL SHALL BE PLACED AND PINNED END TO END.

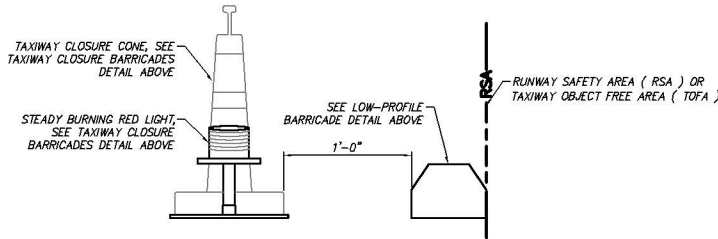


LOW-PROFILE BARRICADE
NTS

- BARRICADE NOTES:**
1. USE RED LIGHTS, STEADY-BURN MEETING THE LUMINANCE REQUIREMENTS OF THE CALIFORNIA HIGHWAY DEPARTMENT; COLLAPSIBLE BARRICADES WITH DIAGONAL, ALTERNATING ORANGE AND WHITE AND REFLECTIVE MARKERS TO SEPARATE ALL THE CONSTRUCTION MARKED AREAS FROM AIRPORT MOVEMENT AREAS. ALL BARRICADES TEMPORARY AND OTHER OBJECTS PLACED AND LEFT IN THE AREAS ASSOCIATED WITH ANY OPEN RUNWAYS, TAXIWAYS, OR TAXILANES MUST BE AS LOW AS POSSIBLE TO THE GROUND; OF LOW MASS; EASILY COLLAPSIBLE UPON CONTACT WITH ANY AIRCRAFT OR ANY OF ITS COMPONENTS AND STURDILY ATTACHED TO THE SURFACE TO PREVENT DISPLACEMENT FROM PROP WASH, JET BLAST, WIND VORTEX OR OTHER SURFACE WIND CURRENTS. IF AFFIXED TO THE SURFACE, THEY MUST BE FRANGIBLE AT GRADE LEVEL OR AS LOW AS POSSIBLE, BUT SHALL NOT EXCEED 3 INCHES ABOVE THE GROUND.
 2. BARRICADES SHALL DELINEATE THE AREA TO BE PROTECTED AS SHOWN ON THE PHASING PLANS.
 3. SPACE BARRICADES WITH A GAP OF 8' MAX END TO END.
 4. CONTRACTOR SHALL USE BARRICADES IN ACCORDANCE WITH FAA AC 150/5340-1H AND 150/5370-2E. CONSTRUCTED OF HIGH IMPACT, UV-RESISTANT POLYETHYLENE, WATER FILLED TYPE, AS MANUFACTURED BY OFF THE WALL (TYPE MULT-BARRIER MODEL 10"x96") OR SIMILAR APPROVED EQUAL.
 5. BARRICADES AND LIGHTS SHALL BECOME LAWA PROPERTY AT COMPLETION OF PROJECT.



TAXIWAY CLOSURE BARRICADES
SCALE: 1" = 0'-6"



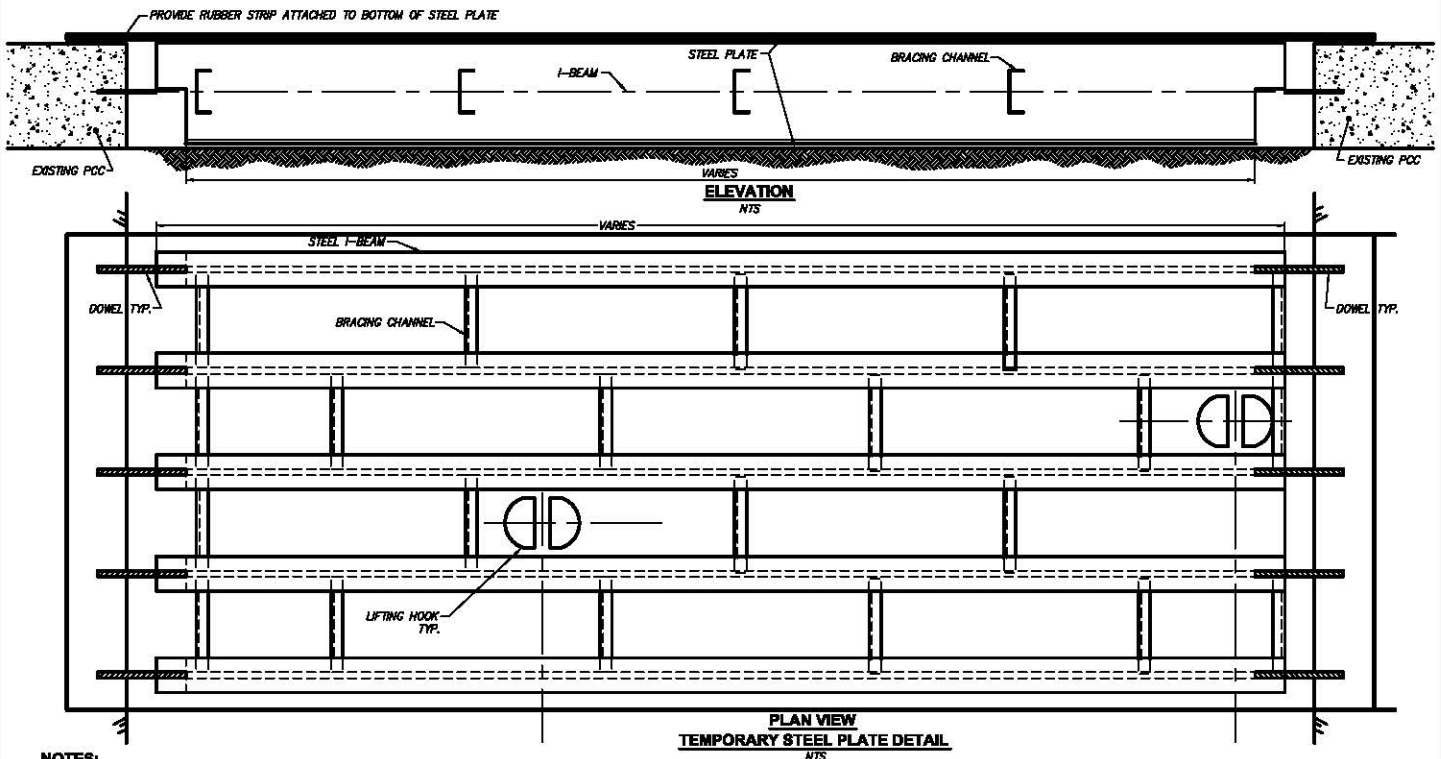
LOW-PROFILE BARRICADES LOCATION DETAIL
SCALE: NTS

REVISION NO.	DESCRIPTION	DATE

APPROVED BY:
LAWA STAFF
CHECKED BY:
ANTONE FERMELIA
DRAWN BY:
WILLIAM P. MAREK
DATE:
11-14-2014

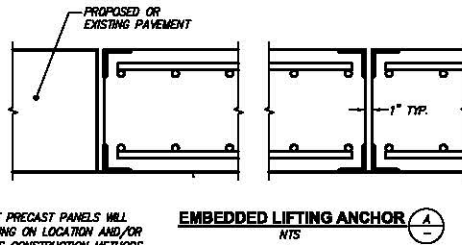
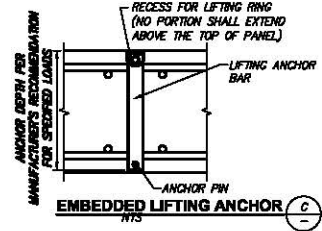
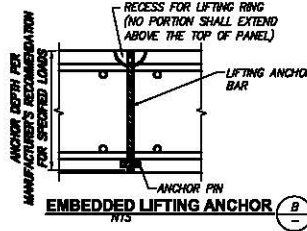
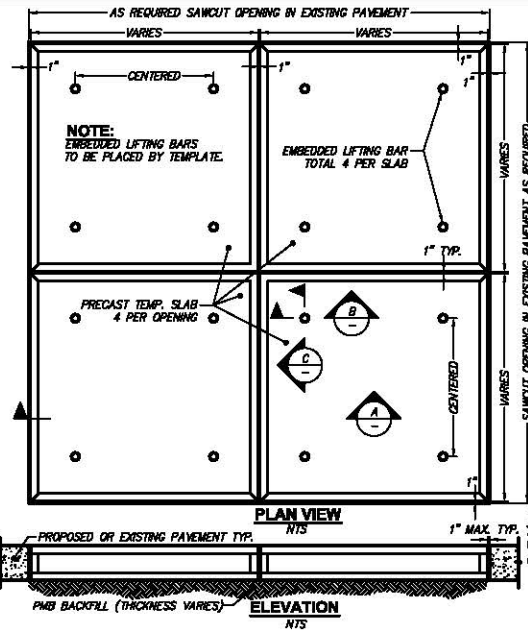


LAWA STANDARD PLANS	
BARRICADE DETAILS	
LAWA STANDARD PLAN NUMBER	
01.03	
SHEET: 5 OF 28	



NOTES:

- EXISTING SLAB DIMENSIONS AND SHAPE VARY. EXISTING SLABS SHALL BE SAW CUT AND THE SLAB REPLACEMENT SEQUENCED TO ACCOMMODATE TEMPORARY PANELS WHILE STILL PROVIDING A USABLE SURFACE CAPABLE OF WITHSTANDING AIRCRAFT (ENGINEER TO DETERMINE CRITICAL AIRCRAFT) TRAFFIC AT ALL LOCATIONS. THE CONTRACTOR SHALL PROVIDE TEMPORARY PANELS OR PROPOSE OTHER MEANS OF PAVEMENT REMOVAL AND REPLACEMENT TO PROVIDE USABLE PAVEMENT FOR AIRCRAFT AND VEHICLES DURING NON-WORKING HOURS.
- ALL STEEL SHAPES SHALL BE ASTM A36 UNLESS OTHERWISE NOTED. ALL REINFORCING BARS SHALL BE GRADE 60. WELDING SHALL CONFORM TO ANSI/AWS D1.1-90.
- THE CONTRACTOR'S SUBMITTAL SHALL INCLUDE THE DETAILS OF PANEL FABRICATION, LIFTING ANCHORS, LIFTING DEVICES AND COUPLINGS. THE SUBMITTAL SHALL INCLUDE DESIGN CALCULATIONS PREPARED, SEALED AND SIGNED BY A CIVIL ENGINEER LICENSED IN THE STATE OF CALIFORNIA.
- THE EMBEDDED ANCHORS AND OTHER LIFTING COMPONENTS SHALL BE DESIGNED FOR A CAPACITY OF AT LEAST FOUR TIMES THE ASSOCIATED PANEL DEAD LOAD.
- THICKNESS OF PRECAST PANELS WILL VARY DEPENDING ON LOCATION AND/OR CONTRACTORS CONSTRUCTION METHOD.
- THE DETAILS SHOWN ON THIS SHEET DEPICT TWO SUGGESTED TEMPORARY PANEL SYSTEMS. OTHER SYSTEMS MEETING THE REQUIREMENTS MAY BE PROPOSED BY THE CONTRACTOR. REPLACEMENT OF CONCRETE SLABS WITH NON-STANDARD DIMENSIONS ARE REQUIRED AT SOME LOCATIONS. THE CONTRACTOR SHALL PROVIDE SPECIAL PRECAST PANEL OR PROPOSE OTHER MEANS OF PAVEMENT REMOVAL AND REPLACEMENT TO KEEP PAVEMENT USABLE BY AIRCRAFT.
- CONTRACTOR SHALL INSTALL TEMPORARY PANEL AND ADJUST AS NECESSARY TO MATCH ELEVATIONS OF THE ADJACENT SLABS. SET PANELS ON GRADE TO PREVENT ROCKING.



NOTE:
THICKNESS OF PRECAST PANELS WILL VARY DEPENDING ON LOCATION AND/OR CONTRACTOR'S CONSTRUCTION METHODS.

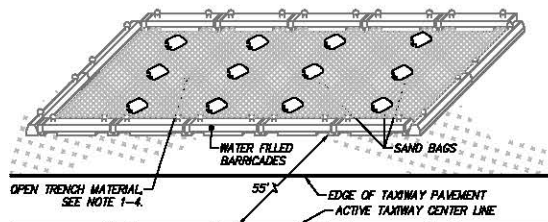
PRECAST TEMPORARY PANELS
NTS

REVISION NO.	DESCRIPTION	DATE

APPROVED BY:
LAWA STAFF
CHECKED BY:
ANTONE FERRELLA
DRAWN BY:
WILLIAM P. MAREK
DATE:
11-14-2014
HNTB

LAWA STANDARD PLANS
TEMPORARY BLOCKING PLATES
LAWA STANDARD PLAN NUMBER
01.04
SHEET: 6 OF 28

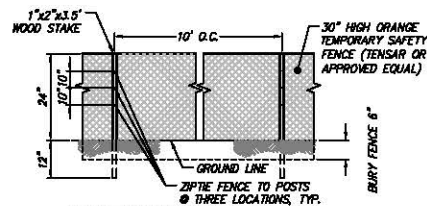
d:\6357_LAWA\APMS\00_CADD\LAWA_STD_01.01.dwg Nov 14, 2014 - 12:58pm



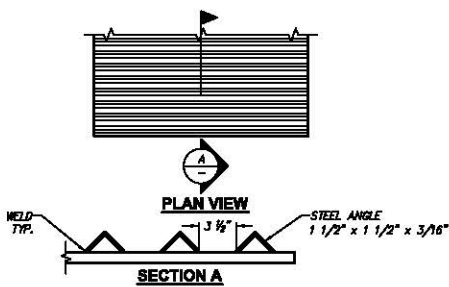
OPEN TRENCH FOD PROTECTION DETAIL
(FOR DAYTIME PROTECTION IN NIGHTTIME WORK AREAS)
NTS

NOTES:

1. OPEN TRENCHES CREATED BY NIGHT TIME WORK WILL BE ALLOWED IN THOSE AREAS SHOWN ON THE PLANS DURING DAY TIME HOURS OUTSIDE 55° OF THE PERPENDICULAR TAXIWAY STRAIGHT SECTIONS, WITH THE FOLLOWING WORK RESTRICTIONS.
2. OPEN TRENCHES MUST BE PROTECTED WITH:
 - A. ONE LAYER OF STEEL CHAIN LINK FENCING, 2" MESH
 - B. SECOND LAYER SHALL BE FILTER FABRIC OR APPROVED PLASTIC CONSTRUCTION FENCING, MIN. OVERLAP 3".
3. SANDBAGS OR WEIGHTED WATER-FILLED BARRICADE (24" MAX. HEIGHT) SHALL BE PLACED ON ALL EXPOSED EDGES INCLUDING OVERLAPS OF MATERIALS. NO EXPOSED OR NON-WEIGHTED EDGES WILL BE ALLOWED. WEIGHTS MUST PROVIDE 51.2 POUNDS OF MASS PER SQUARE FOOT OF EXPOSED FACE.
4. FOR ALL AREAS, PROVIDE INTERMEDIATE WEIGHTS TO PREVENT BLOWING OF GEOTEXTILES, SPACING SHALL BE FIELD DETERMINED.



CONSTRUCTION SAFETY FENCE
NTS



NOTES:

1. RUMBLE STRIP SHALL BE MINIMUM OF 20' LONG X WIDTH (SUFFICIENT TO COVER HAULING ROUTE)
2. IF MULTIPLE RUMBLE STRIPS ARE USED, THEY SHALL BE FASTENED TOGETHER TO PREVENT MOVEMENT.

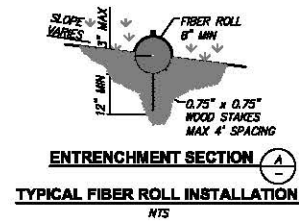
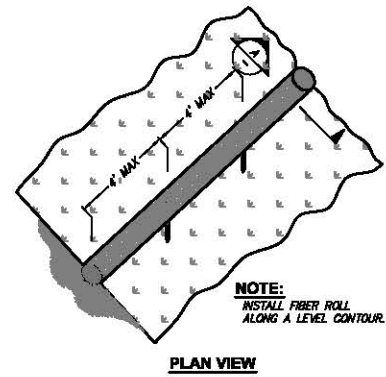
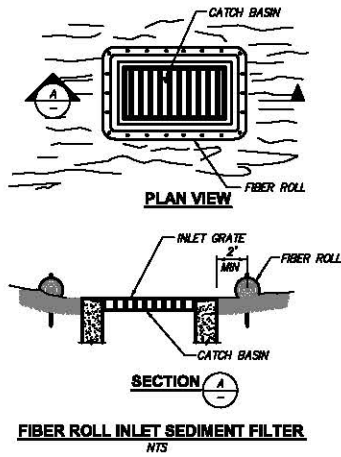
d:\6357_LAWA_APMIS\00_CADD\LAX\LAWA_STD_01.01.dwg Nov 14, 2014 - 12:58pm

REVISION NO.	DESCRIPTION	DATE

APPROVED BY:
LAWA STAFF
CHECKED BY:
ANTONE FERMELLA
DRAWN BY:
WILLIAM P. MAREK
DATE:
11-14-2014



LAWA STANDARD PLANS F.O.D. PROTECTION	
	LAWA STANDARD PLAN NUMBER 01.05 SHEET: 7 OF 28



d:\46357_LAWA_APMIS\00_GADD\LAX\LAWA_STD_01.01.dwg Nov 14, 2014 - 12:58pm

REVISION NO.	DESCRIPTION	DATE

APPROVED BY:
LAWA STAFF

CHECKED BY:
ANTONE FERMELLA

DRAWN BY:
WILLIAM P. MAREK

DATE:
11-14-2014

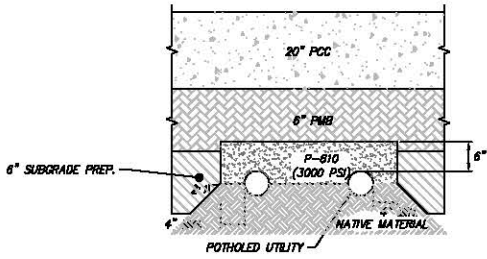
HNTB

LAWA STANDARD PLANS

EROSION CONTROL

LAWA STANDARD PLAN NUMBER
01.06

SHEET: 8 OF 28

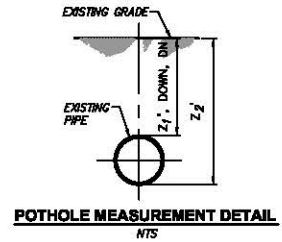


CASE A - UNDER PCC PAVEMENT

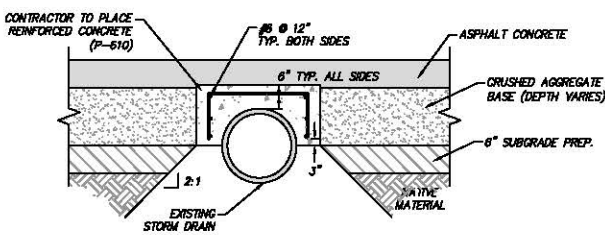
**TYPE 1 PROTECTION: EXISTING UTILITY
WITHIN 6" OF PMB**
NTS

NOTE:

1. CONTRACTOR SHALL DETERMINE TYPE (CASE A OR B) TO BE USED DEPENDING ON EXISTING UTILITY DEPTH AND PROPOSED PAVEMENT SECTION.
2. WHERE EXISTING UTILITY IS WITHIN 6" OF THE PMB SECTION, UTILITY SHALL BE ENGAGED WITH P-610 AS SHOWN HEREIN.

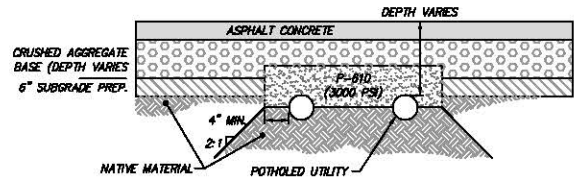


POT HOLE MEASUREMENT DETAIL
NTS



UNDER AC PAVEMENT

**TYPE 2 PROTECTION: EXISTING STORM DRAIN
WITHIN BASE SECTION**
NTS



CASE B - UNDER AC PAVEMENT

d:\46357_LAWA_APMIS\00_CADD\LAX\LAWA_STD\10.01.dwg Nov 14, 2014 - 12:59pm

REVISION NO.	DESCRIPTION	DATE

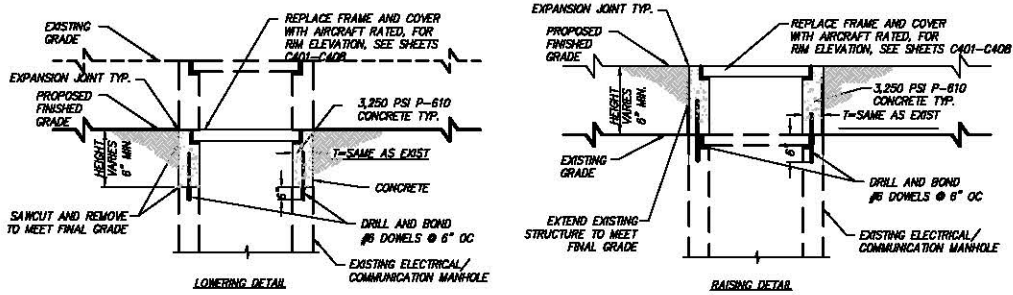
APPROVED BY:
LAWA STAFF
CHECKED BY:
ANTONE FERMELLA
DRAWN BY:
WILLIAM P. MAREK
DATE:
11-14-2014



LAWA STANDARD PLANS

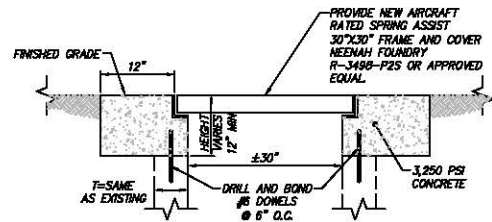
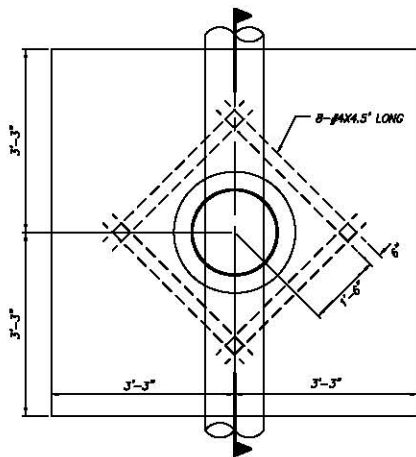
EXISTING UTILITY PROTECTION 1

LAWA STANDARD PLAN NUMBER
10.01
SHEET: 9 OF 28



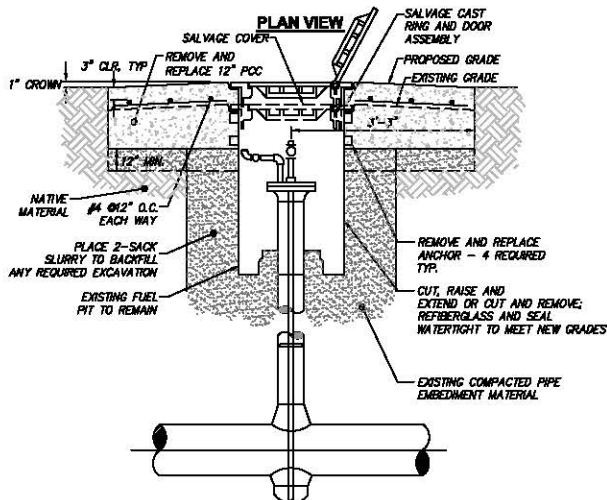
ELECTRICAL / COMMUNICATION MANHOLE ADJUSTMENT DETAIL

NTS



ELECTRICAL AIRCRAFT RATED MANHOLE FRAME AND COVER REPLACEMENT DETAIL

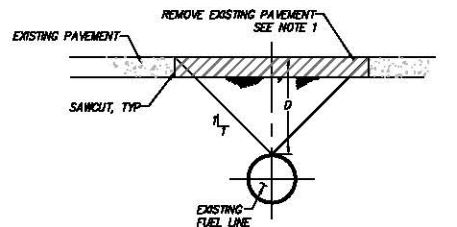
NTS



FUEL MANHOLE ADJUSTMENT DETAIL

NTS

NOTES:
CONTRACTOR SHALL CONTRACT WITH DABCO INC. OR APPROVED EQUAL FOR ALL MATERIALS AND MODIFICATIONS TO EXISTING FUEL MANHOLES.



PAVEMENT REMOVAL OVER FUEL LINE DETAIL

NTS

NOTES:
1. PAVEMENT OVER FUEL LINE AS INDICATED SHALL BE REMOVED WITH A SIDE VERTICAL LIFT. NO IMPACT EQUIPMENT SHALL BE USED.
2. CONTRACTOR SHALL POthOLE UTILITY AND DETERMINE DEPTH 'D' PRIOR TO DEMOLITION OVER FUEL LINE.
3. IF SEVERAL FUEL LINES ARE PARALLEL, SPECIAL PAVEMENT REMOVAL INDICATED IN NOTE 1 SHALL EXTEND A DISTANCE OF 'D' FROM OUTER MOST FUEL LINES.

d:\6357_LAWA_APMIS\00_CADD\LAWA_STD_10.01.dwg Nov 14, 2014 - 1:00pm

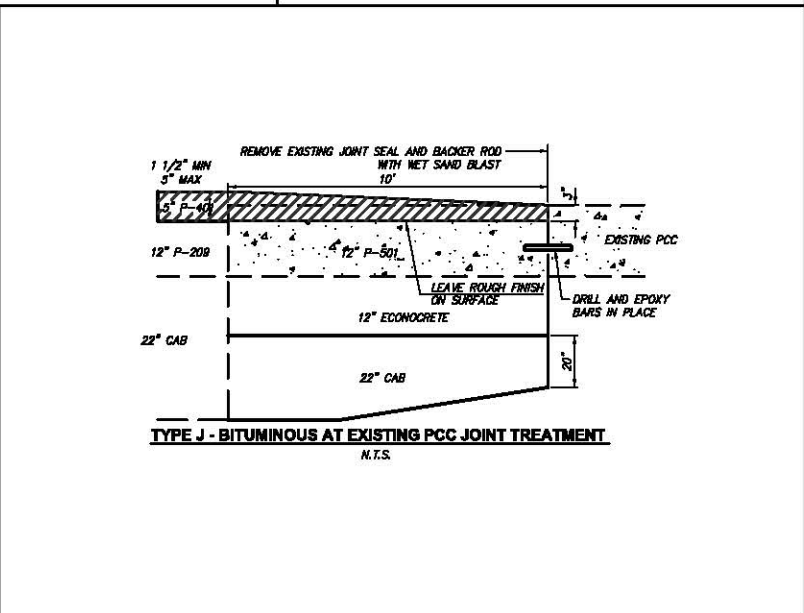
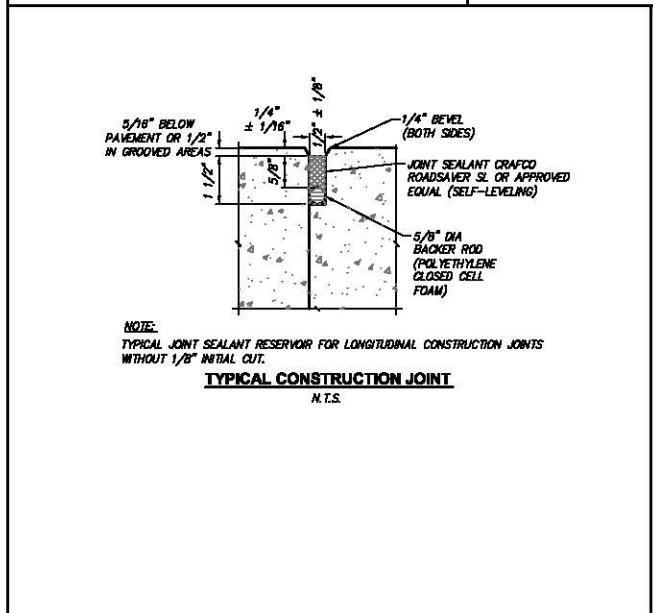
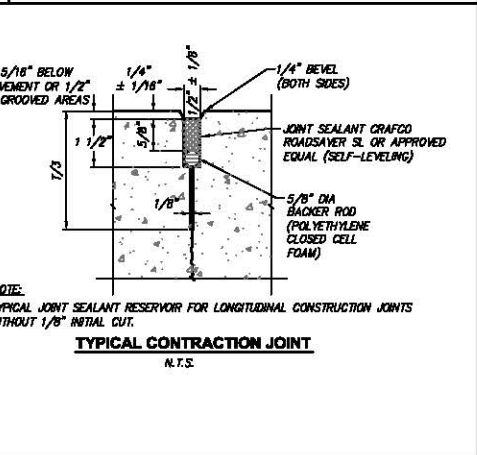
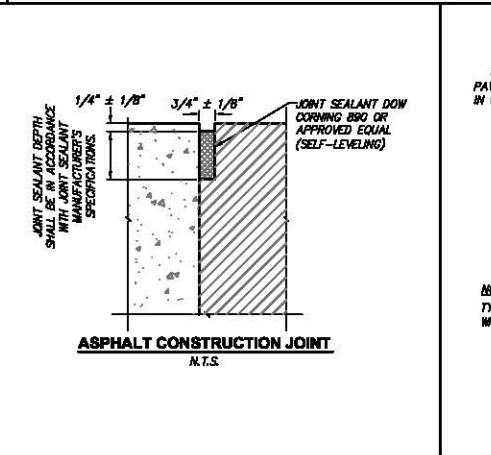
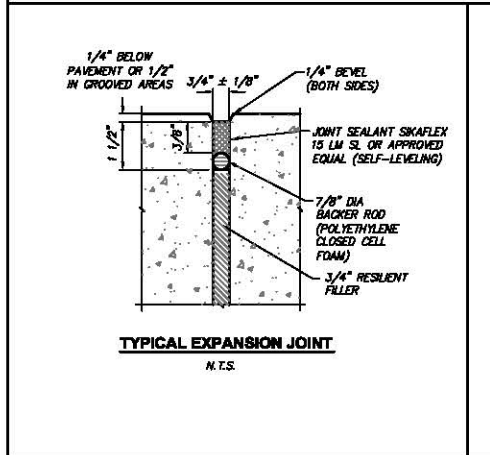
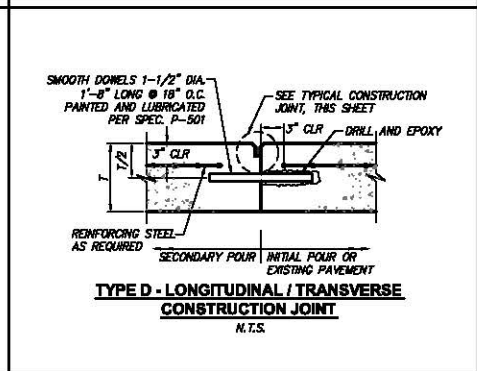
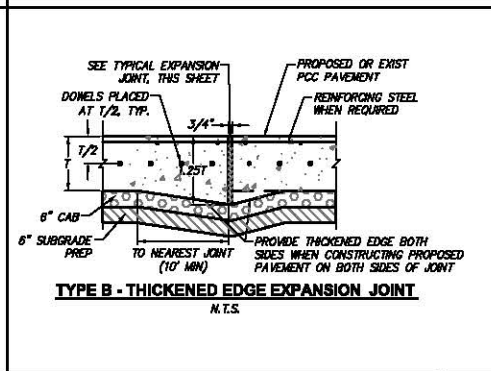
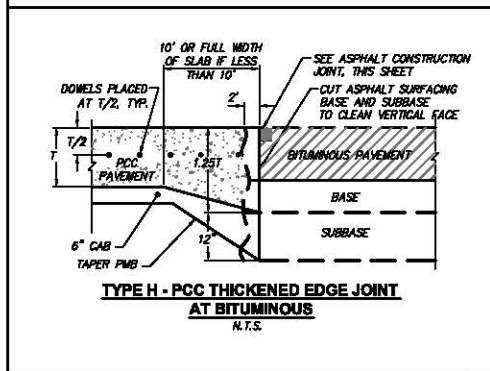
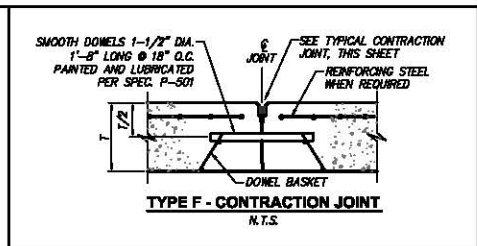
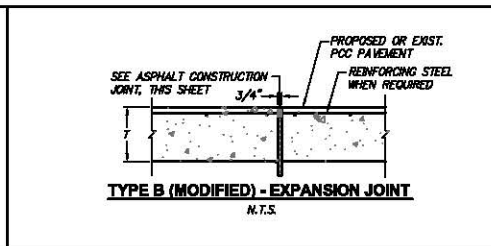
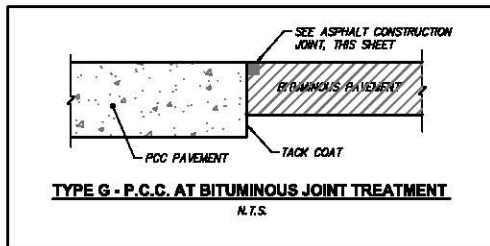
REVISION NO.	DESCRIPTION	DATE

APPROVED BY:
LAWA STAFF
CHECKED BY:
ANTONE FERMELLA
DRAWN BY:
WILLIAM P. MAREK
DATE:
11-14-2014



LAWA STANDARD PLANS
EXISTING UTILITY PROTECTION 2

LAWA STANDARD PLAN NUMBER
10.02
SHEET: 10 OF 28



REVISION NO.	DESCRIPTION	DATE

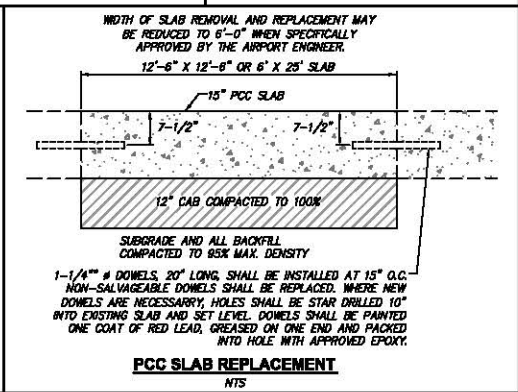
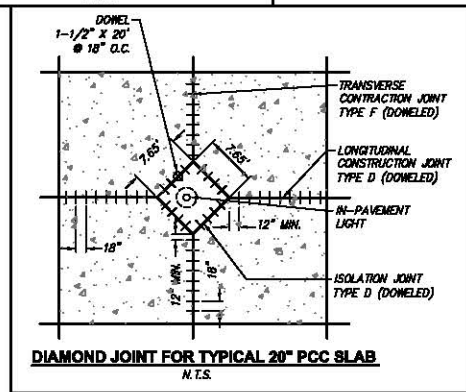
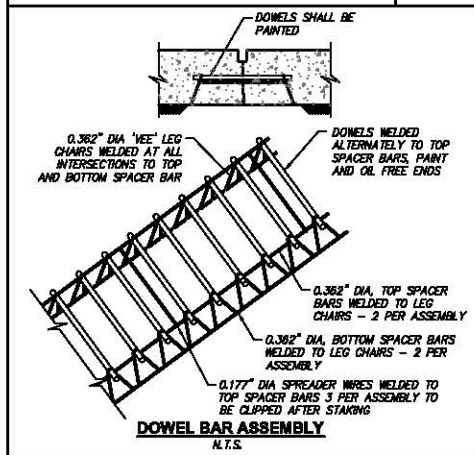
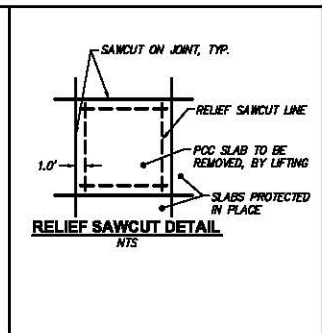
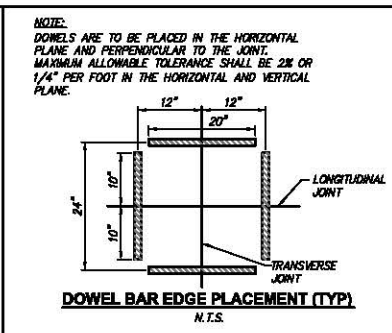
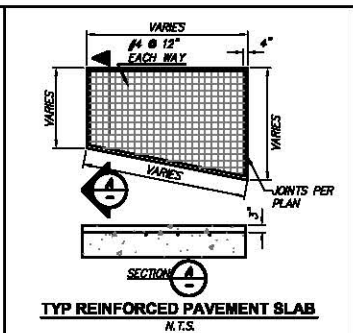
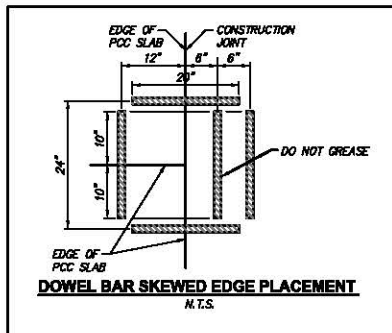
APPROVED BY:
LAWA STAFF
CHECKED BY:
ANTONE FERMELLA
DRAWN BY:
WILLIAM P. MAREK
DATE:
11-14-2014



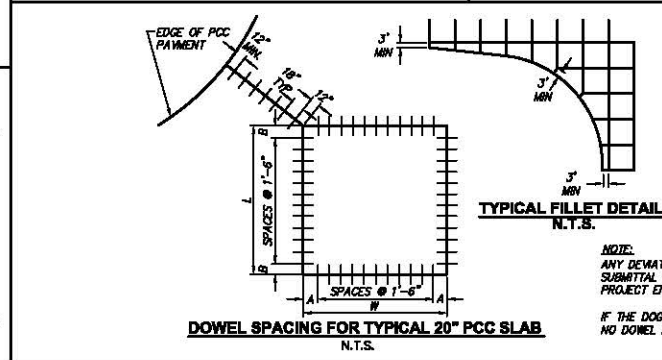
LAWA STANDARD PLANS
PAVEMENT JOINT DETAILS - 1

LAWA STANDARD PLAN NUMBER
30.01
SHEET: 11 OF 28

d:\46357_LAWA\APMS\00_CADD\LAWA\STD_30.01.dwg Nov 14, 2014 - 1:02pm



- GENERAL PAVING NOTES**
1. USE TYPE D CONSTRUCTION JOINT WHERE PAVING OPERATIONS ARE DELAYED OR STOPPED.
 2. DOWELS SHALL BE PROPERLY POSITIONED BY USE OF AN APPROVED SUPPORT ASSEMBLY.
 3. SAWED EDGES OF PAVING SHALL BE STRAIGHT, VERTICAL AND SMOOTH.
 4. JOINTS SHALL BE THOROUGHLY CLEARED BY COMPRESSED WATER AND NET SAND BLASTED PRIOR TO APPLICATION OF THE SEALANT.
 5. JOINT FACES SHALL BE DRY PRIOR TO PLACING SEALANT MATERIAL.
 6. JOINT SEALANT DEPTH SHALL BE IN ACCORDANCE WITH JOINT SEALANT MANUFACTURER'S SPECIFICATIONS.
 7. DOWEL BAR SPACING SHALL BE 18\"/>



DOWEL SPACING FOR TYPICAL 20\"/>

L	W	A	B
20.00'	20.00'	12"	12"
25.00'	25.00'	15"	15"
16.53'	20.00'	12"	9.18"
22.50'	20.00'	12"	18"
16.79'	20.00'	12"	10.74"
16.86'	20.00'	12"	9.96"
17.50'	25.00'	15"	15"
26.00'	25.00'	15"	12"
25.81'	25.00'	15"	10.86"
14.98'	25.00'	15"	17.88"
16.00'	20.00'	12"	15"

NOTE:
ANY DEVIATION FROM THIS DETAIL REQUIRES SUBMITTAL AND PRIOR APPROVAL FROM THE PROJECT ENGINEER.
IF THE DOG-LEG JOINT IS LESS THAN 2.0', NO DOWEL IS REQUIRED.

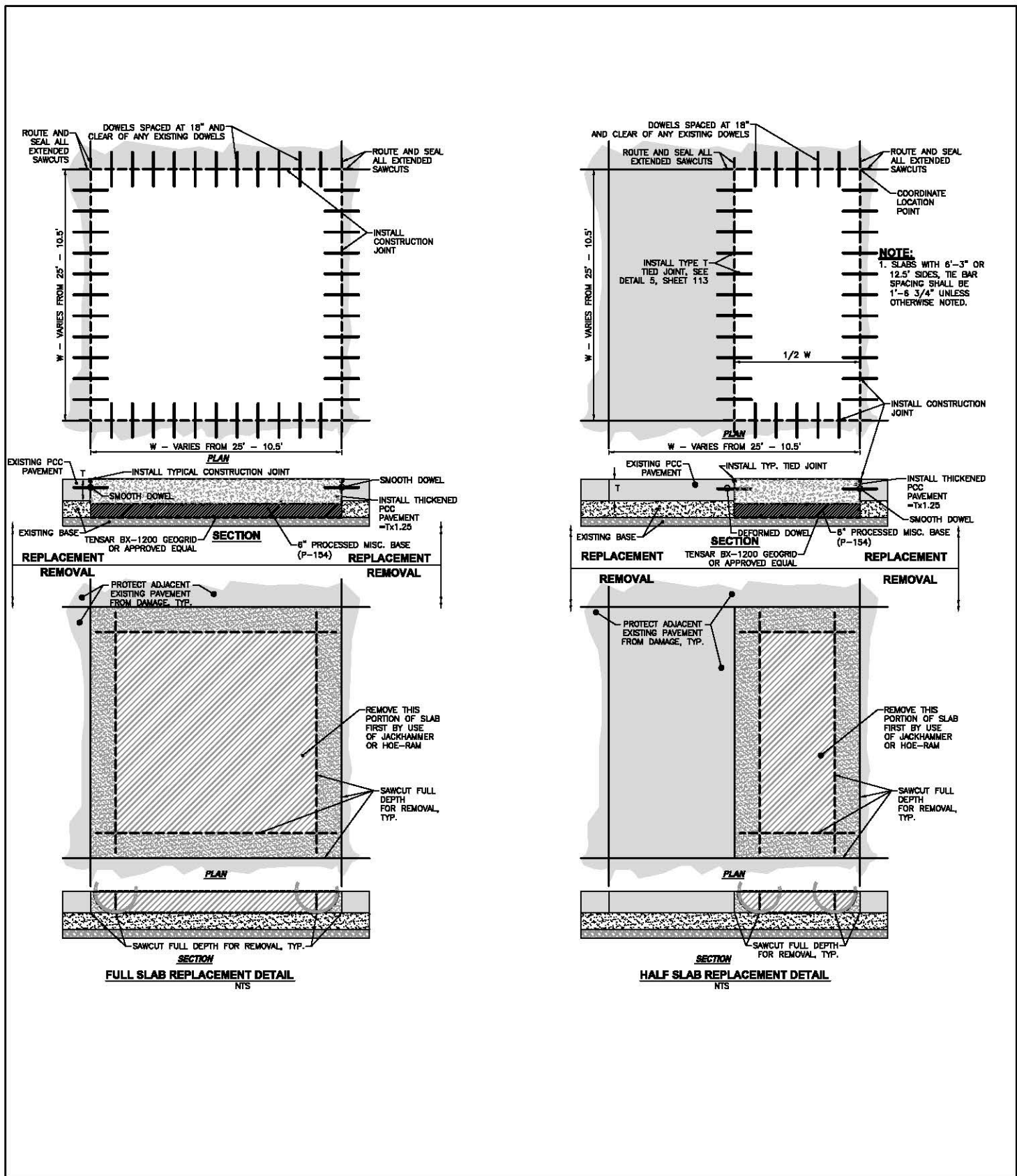
REVISION NO.	DESCRIPTION	DATE

APPROVED BY:
LAWA STAFF
CHECKED BY:
ANTONE FERMELLA
DRAWN BY:
WILLIAM P. MAREK
DATE:
11-14-2014

HNTB

LAWA STANDARD PLANS
PAVEMENT JOINT DETAILS - 2

LAWA STANDARD PLAN NUMBER
30.02
SHEET: 12 OF 28



d:\6357_LAWA_APMIS\00_GADD\LAWA_STD\LAWA_STD_30.07.dwg Nov 14, 2014 - 1:04pm

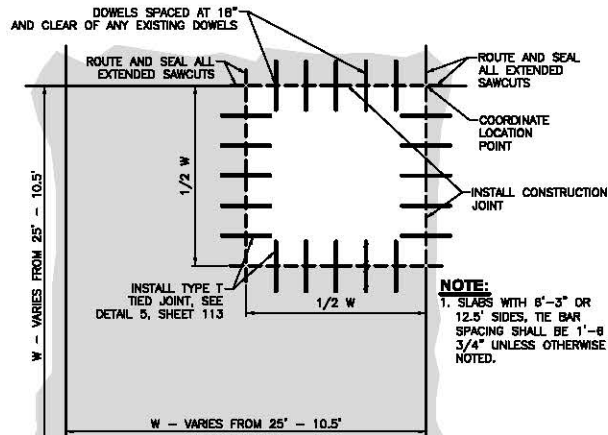
REVISION NO.	DESCRIPTION	DATE

APPROVED BY:
LAWA STAFF
CHECKED BY:
ANTONE FERRELLA
DRAWN BY:
WILLIAM P. MAREK
DATE:
11-14-2014

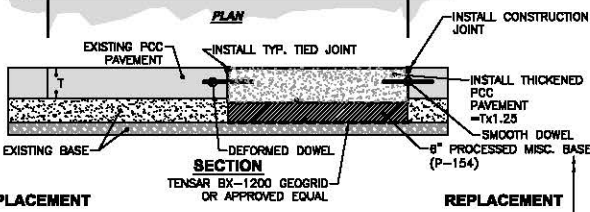


LAWA STANDARD PLANS
SLAB REPLACEMENT DETAILS 1

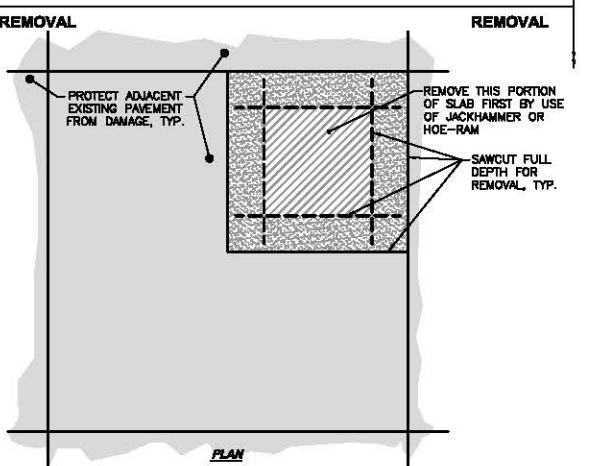
LAWA STANDARD PLAN NUMBER
30.03
SHEET: 13 OF 28



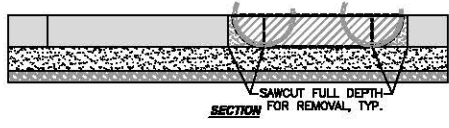
NOTE:
 1. SLABS WITH 8'-3" OR 12.5' SIDES, TIE BAR SPACING SHALL BE 1'-6 3/4" UNLESS OTHERWISE NOTED.



REPLACEMENT **REPLACEMENT**



REMOVAL **REMOVAL**



QUARTER SLAB REPLACEMENT DETAIL
 NTS

REVISION NO.	DESCRIPTION	DATE

APPROVED BY:
 LAWA STAFF
 CHECKED BY:
 ANTONIO FERMELLA
 DRAWN BY:
 WILLIAM P. MAREK
 DATE:
 11-14-2014

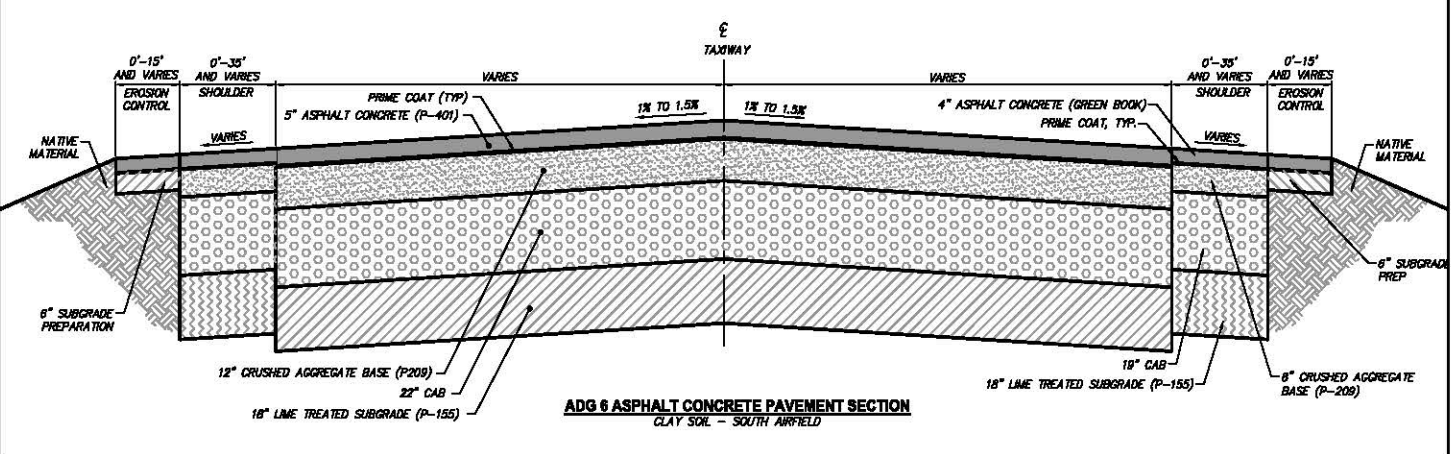
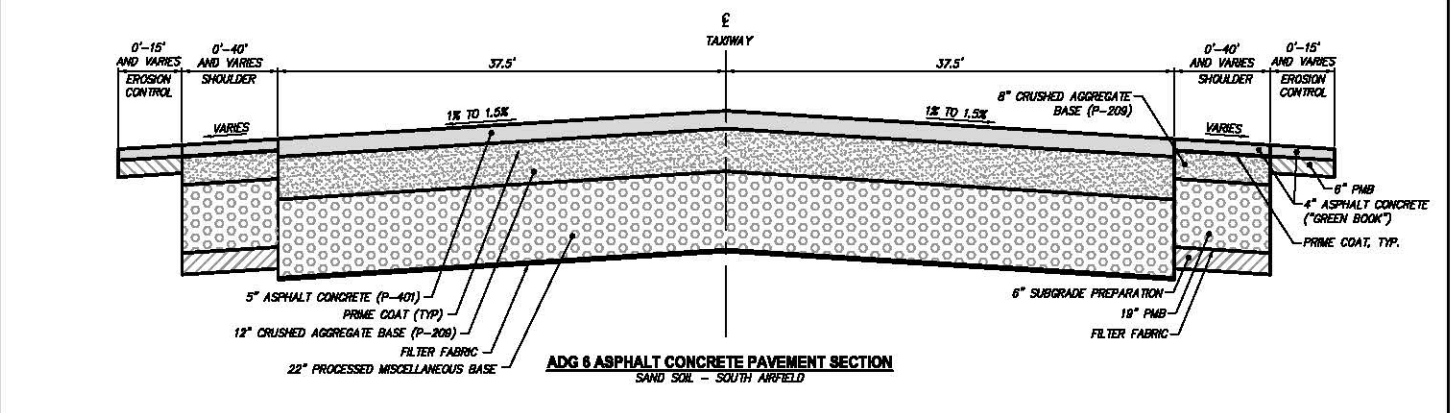
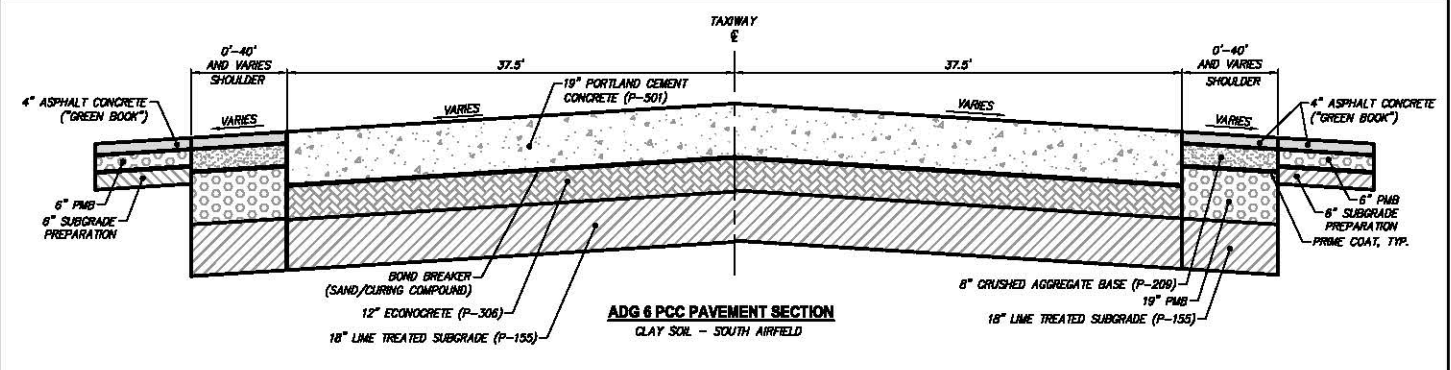
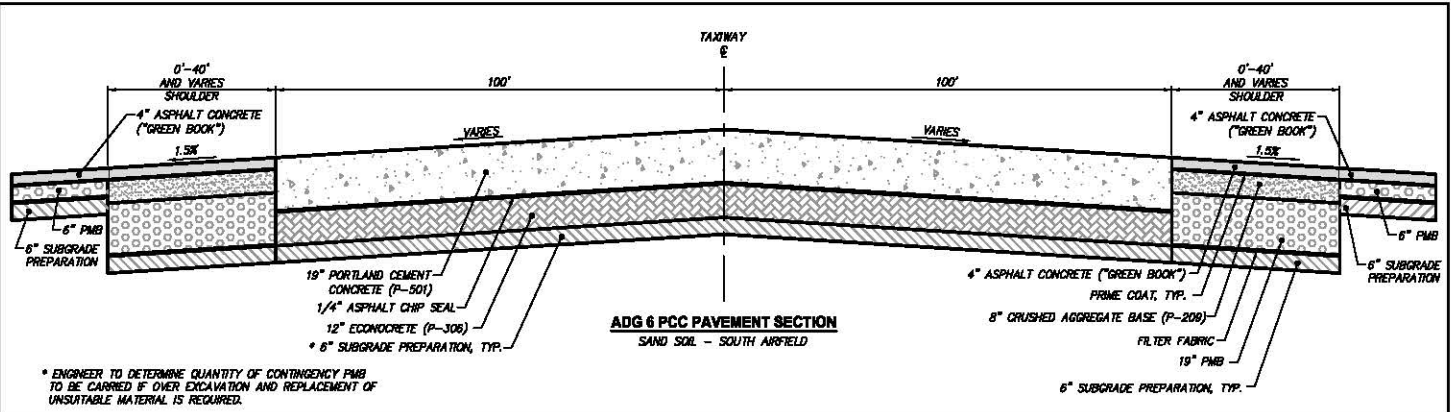


LAWA STANDARD PLANS

SLAB REPLACEMENT DETAILS 2

LAWA STANDARD PLAN NUMBER
30.04
 SHEET: 14 OF 28

d:\6357_LAWA_APMIS\00_CADD\LAWA\STD_30.01.dwg Nov 14, 2014 - 1:04pm



d:\6357_LAWA\APMS\DOCS\ADD\LAWA_STD_31.01.dwg Nov 14, 2014 - 1:05pm

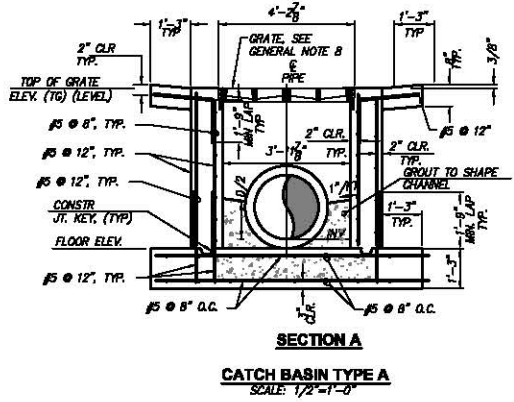
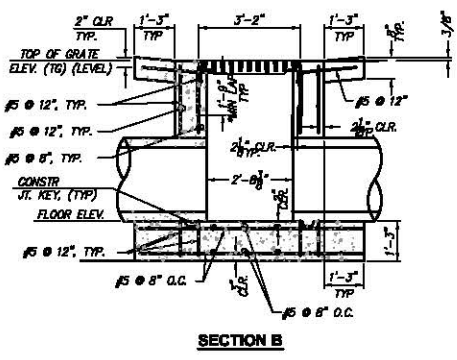
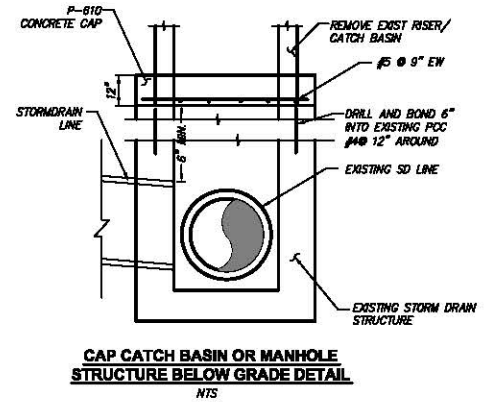
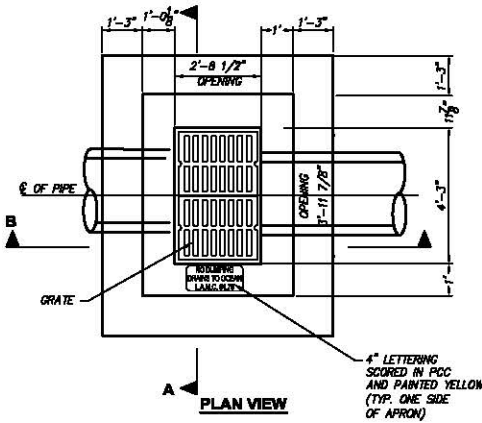
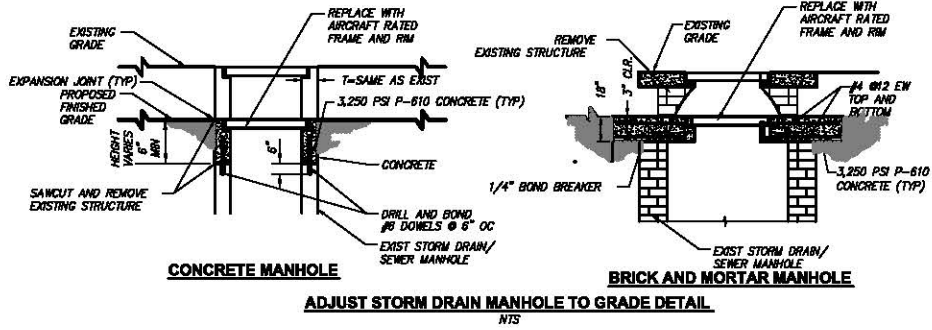
REVISION NO.	DESCRIPTION	DATE

APPROVED BY:
LAWA STAFF
CHECKED BY:
ANTONE FERMELLA
DRAWN BY:
WILLIAM P. MAREK
DATE:
11-14-2014



LAWA STANDARD PLANS
PAVEMENT SECTIONS

LAWA STANDARD PLAN NUMBER
31.01
SHEET: 15 OF 28



- GENERAL NOTES:**
1. ALL CONCRETE SHALL MEET THE REQUIREMENTS OF SECTION P-610.
 2. REINFORCING STEEL SHALL CONFORM TO ASTM A615, GRADE 60.
 3. CONCRETE COVER ON ALL REINFORCING STEEL SHALL BE 2" MINIMUM.
 4. THE MANHOLE FRAME AND LD SHALL BE AIRCRAFT RATED FOR 100,000 LBS. WHEEL LOAD NEENAH FOUNDRY CO. NO. R-3492, EAST JORDAN IRON WORKS NO. 1800 OR APPROVED EQUAL.
 5. FOR NUMBER DESIGNATIONS, LOCATION OF MANHOLES, PIPE SIZES AND FLOWLINE ELEVATIONS, SEE GRADING AND DRAINAGE PLANS.
 6. INVERT OF MANHOLE SHALL BE SHAPED TO PROVIDE SMOOTH FLOW.
 7. THE CONTRACTOR MAY OPTIONALLY PROVIDE VERTICAL WALL REINFORCING STEEL FULL LENGTH FROM THE BOTTOM SLAB TO THE TOP OF WALL, IN LIEU OF USING THE 1'-9" LAP AT THE CONSTRUCTION JOINT BETWEEN THE WALL AND SLAB.
 8. THE INLET FRAME AND BOLTED DOWN GRATE SHALL BE NEENAH FOUNDRY CO. NO. R-3475-F OR APPROVED EQUAL.

REVISION NO.	DESCRIPTION	DATE

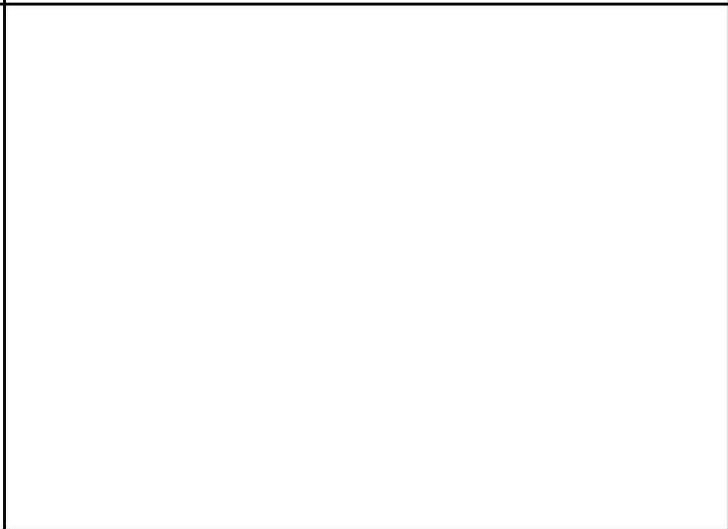
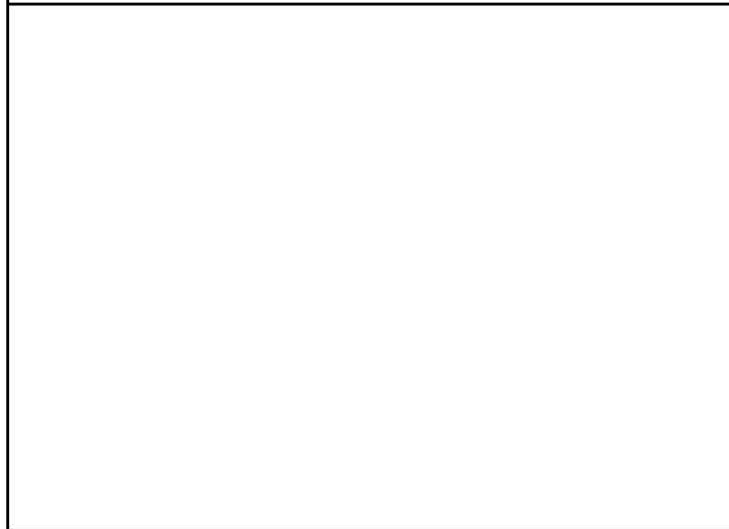
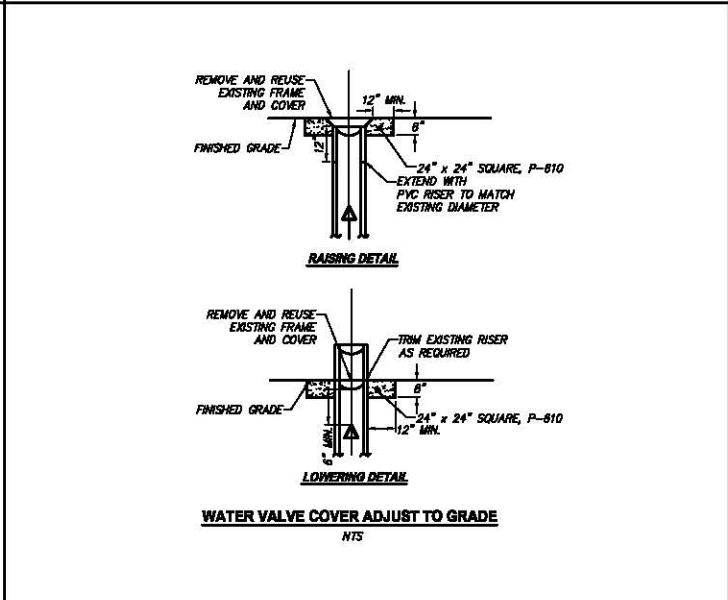
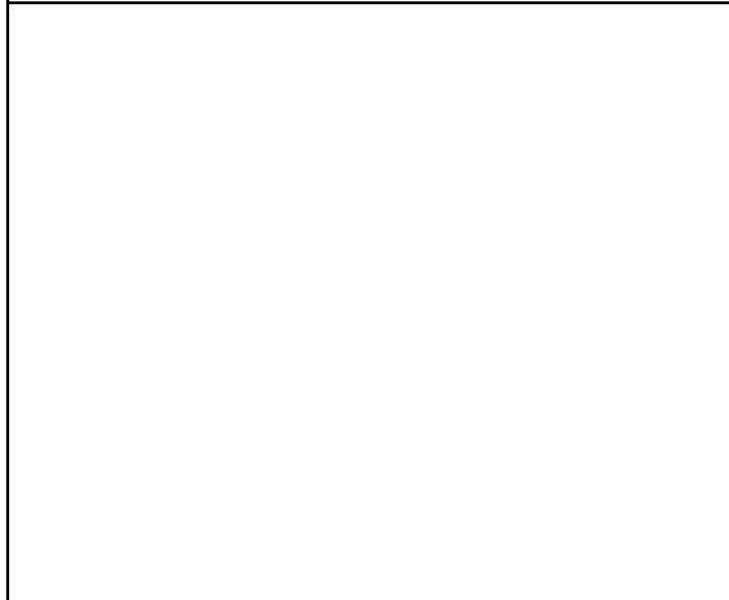
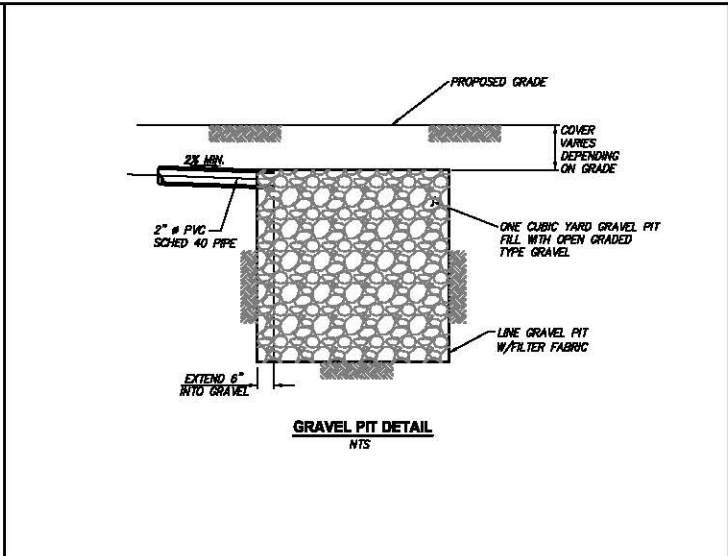
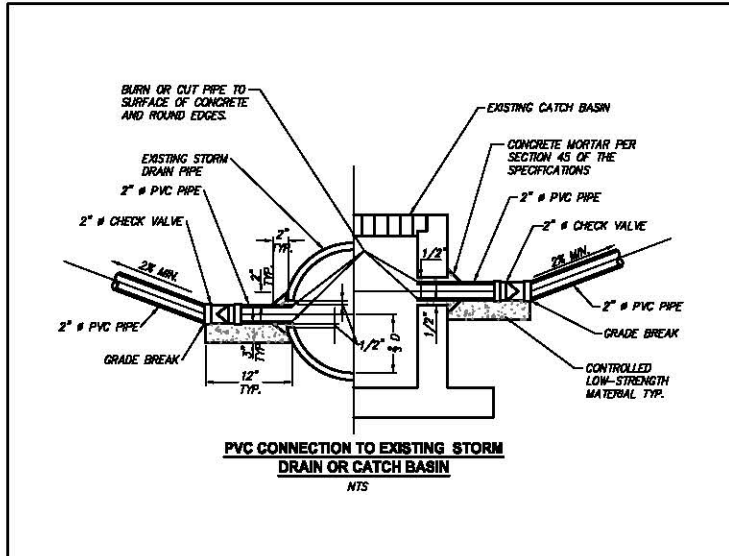
APPROVED BY:
LAWA STAFF
CHECKED BY:
ANTONE FERMELLA
DRAWN BY:
WILLIAM P. MAREK
DATE:
11-14-2014



LAWA STANDARD PLANS
GRADING AND DRAINAGE DETAILS 1

LAWA STANDARD PLAN NUMBER
40.01
SHEET: 16 OF 28

d:\6357_LAWA\APMIS\DO_CADD\LAWA_STD_40.01.dwg Nov 14, 2014 - 1:06pm



REVISION NO.	DESCRIPTION	DATE

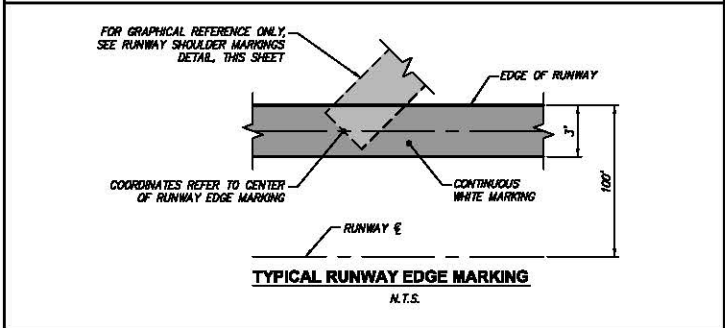
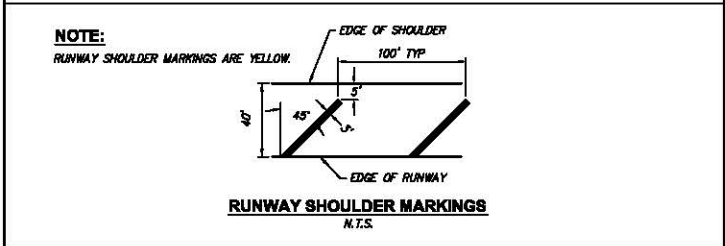
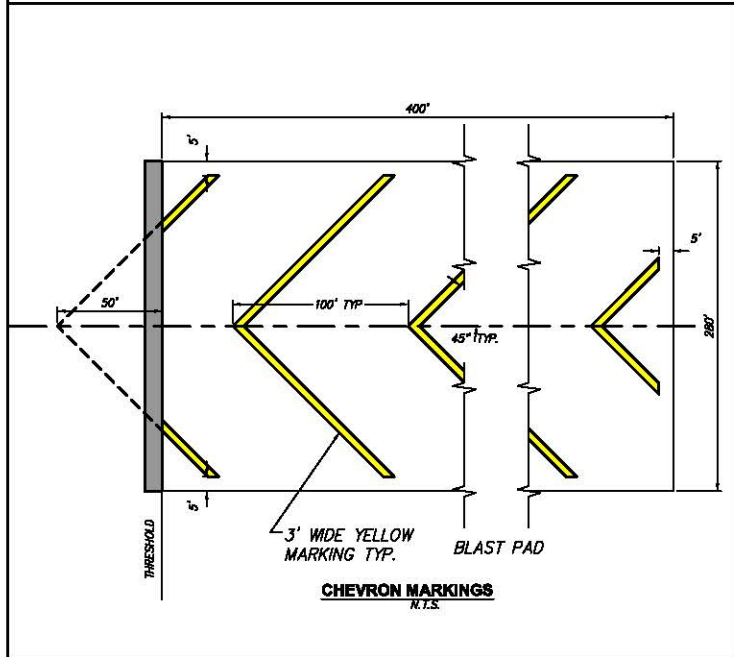
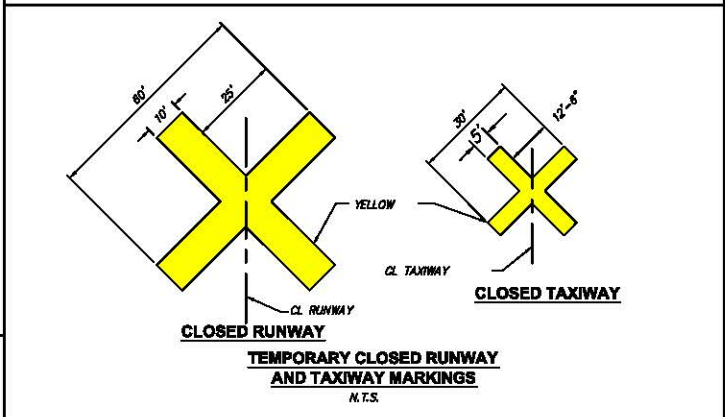
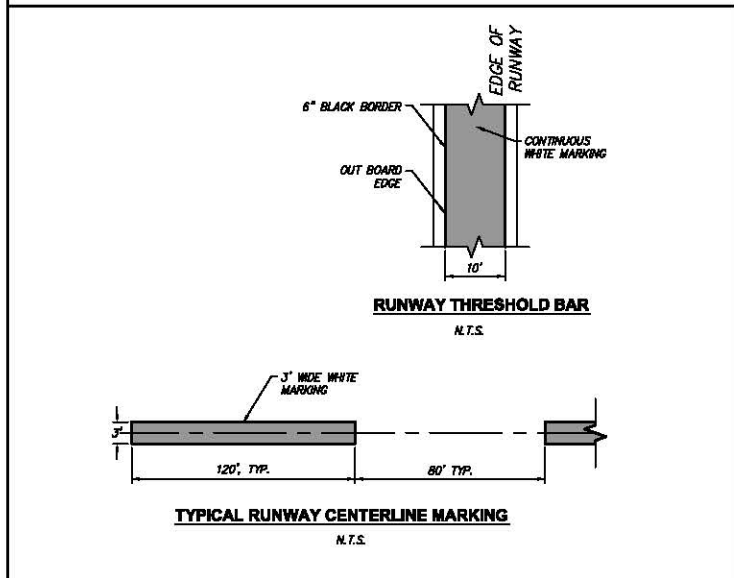
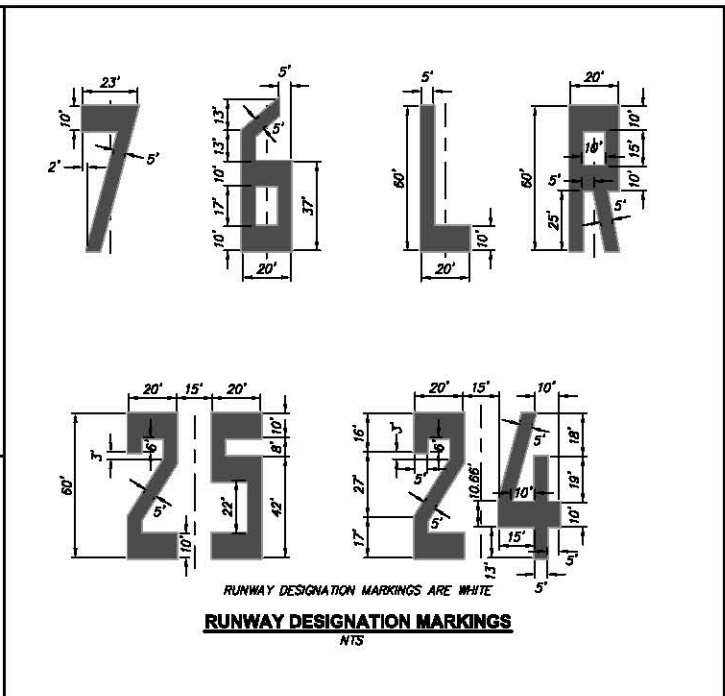
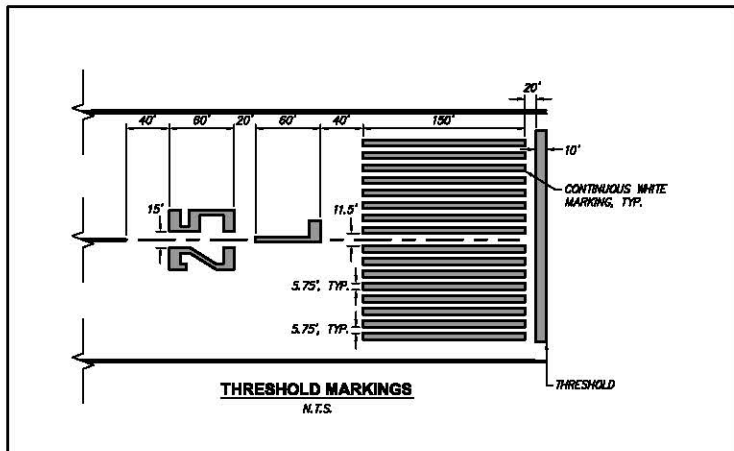
APPROVED BY:
LAWA STAFF
CHECKED BY:
ANTONE FERMELLA
DRAWN BY:
WILLIAM P. MAREK
DATE:
11-14-2014



LAWA STANDARD PLANS
GRADING AND DRAINAGE DETAILS 2

LAWA STANDARD PLAN NUMBER
40.02
SHEET: 17 OF 28

d:\46357_LAWA\APMS\DOCS\ADD\LAWA_STD\40.01.dwg Nov 14, 2014 - 1:06pm



d:\6357_LAWA_APMIS\00_CADD\LAWA_STD_50.01.dwg Nov 14, 2014 - 1:07pm

REVISION NO.	DESCRIPTION	DATE

APPROVED BY:
LAWA STAFF

CHECKED BY:
ANTONE FERMELLA

DRAWN BY:
WILLIAM P. MAREK

DATE:
11-14-2014

HNTB

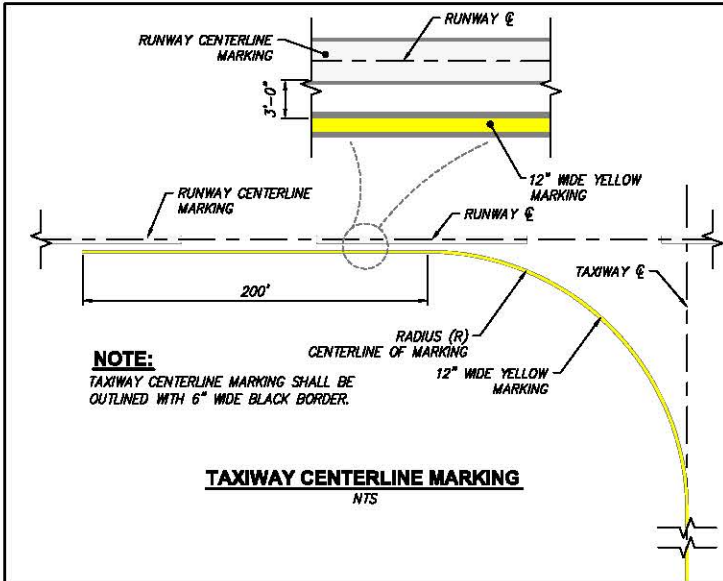
LAWA STANDARD PLANS

RUNWAY MARKING

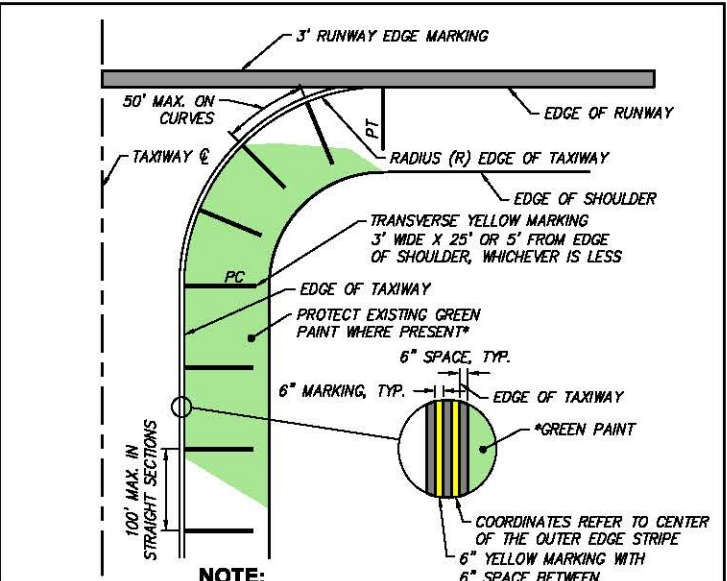
LAWA STANDARD PLAN NUMBER

50.01

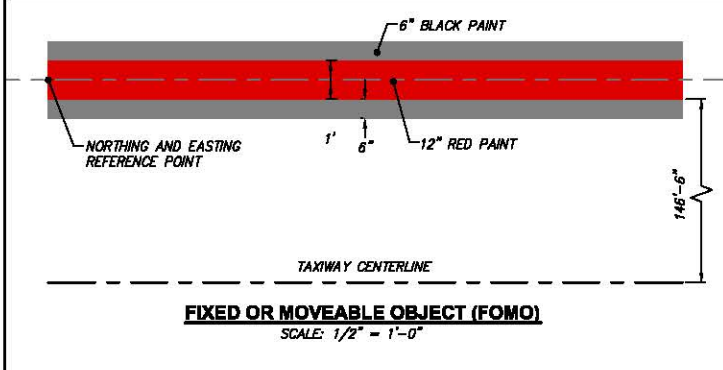
SHEET: 18 OF 28



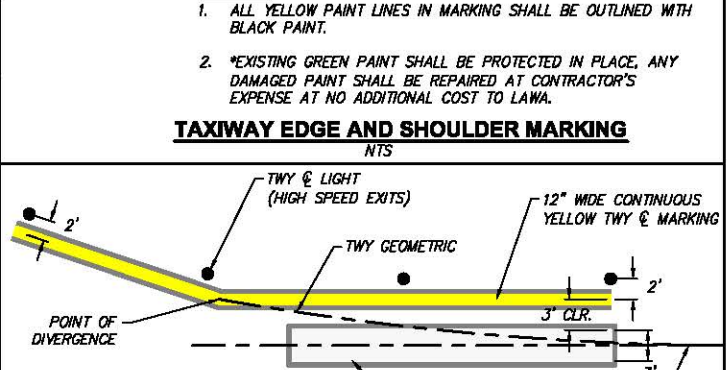
TAXIWAY CENTERLINE MARKING
NTS



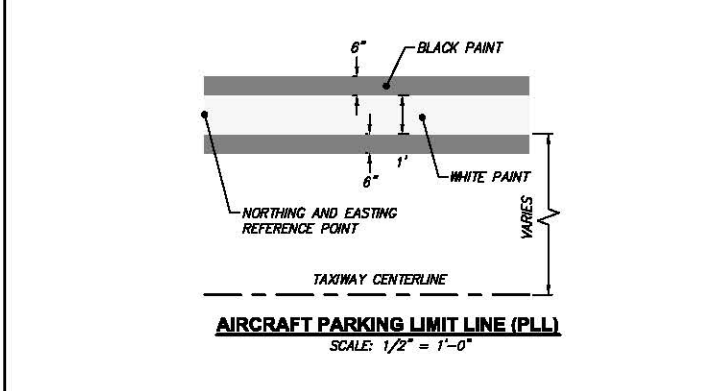
TAXIWAY EDGE AND SHOULDER MARKING
NTS



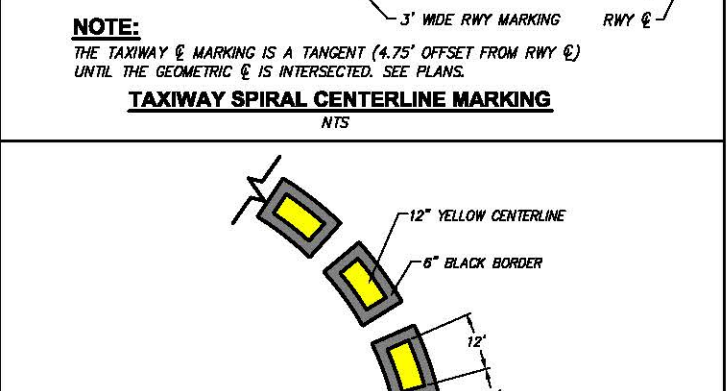
FIXED OR MOVEABLE OBJECT (FOMO)
SCALE: 1/2" = 1'-0"



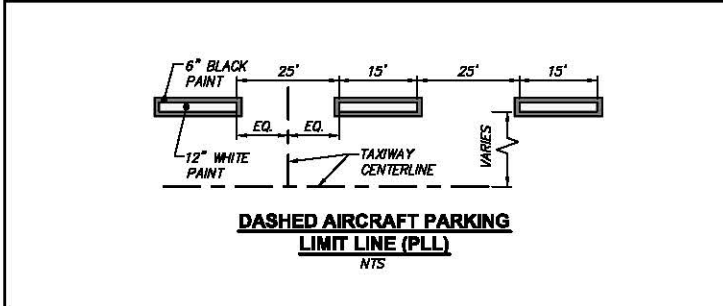
TAXIWAY SPIRAL CENTERLINE MARKING
NTS



AIRCRAFT PARKING LIMIT LINE (PLL)
SCALE: 1/2" = 1'-0"



ALTERNATE LEAD-IN LINE
1" = 40'



DASHED AIRCRAFT PARKING LIMIT LINE (PLL)
NTS

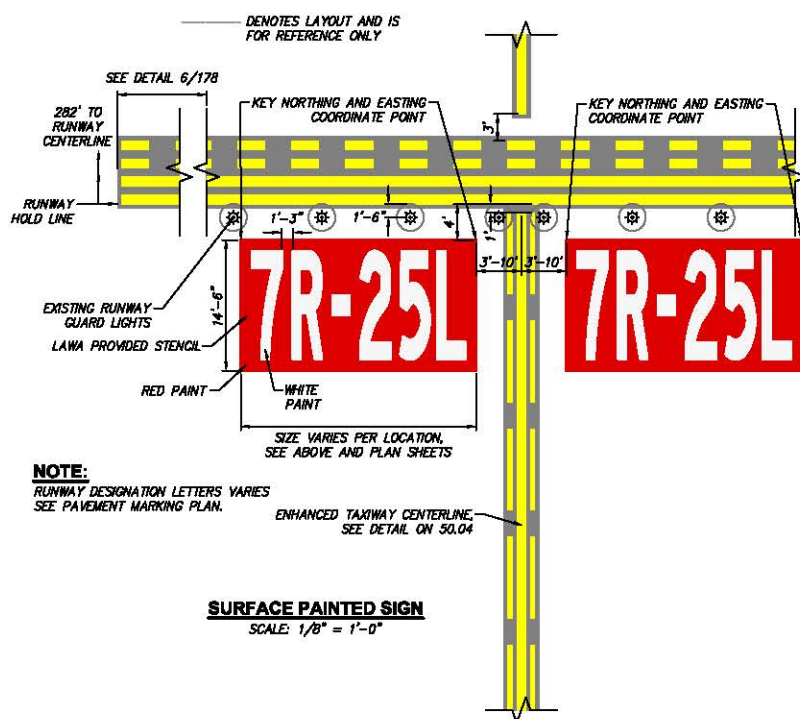
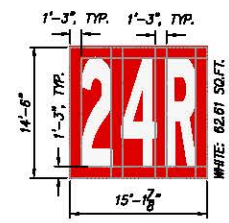
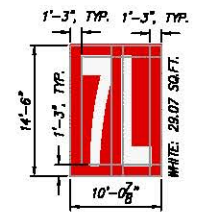
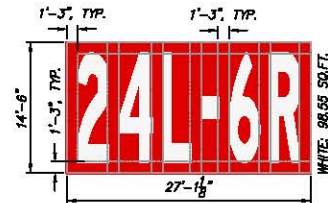
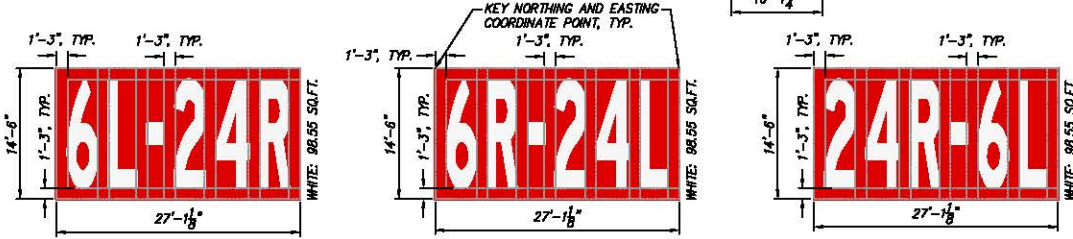
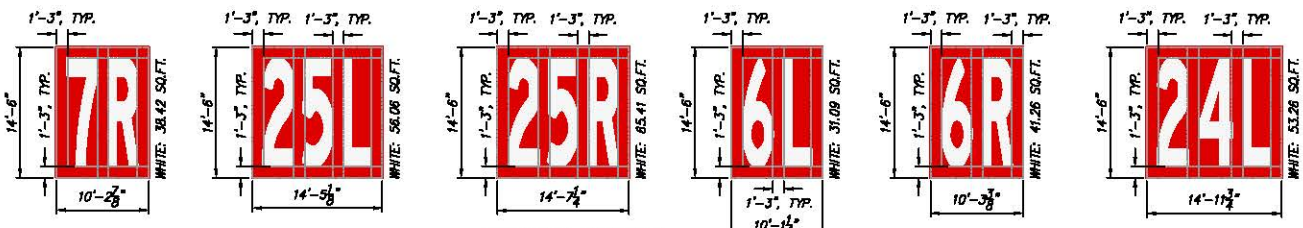
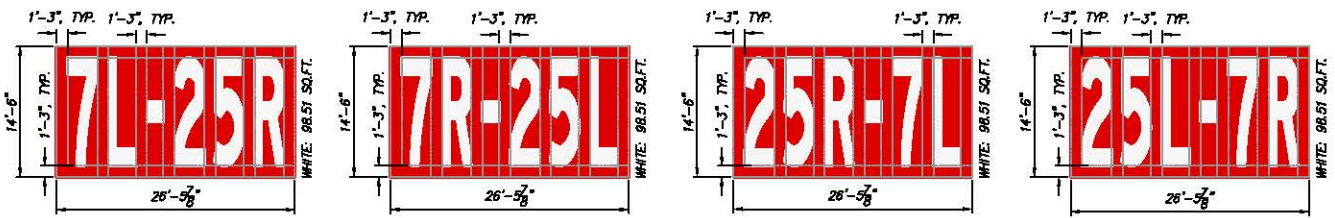
REVISION NO.	DESCRIPTION	DATE

APPROVED BY:
LAWA STAFF
CHECKED BY:
ANTONE FERMELLA
DRAWN BY:
WILLIAM P. MAREK
DATE:
11-14-2014
HNTB

LAWA STANDARD PLANS
TAXIWAY MARKING

LAWA STANDARD PLAN NUMBER
50.02
SHEET: 18 OF 28

d:\6357_LAWA\APMS\00_CADD\LAX\LAWA_STD_50.01.dwg Nov 14, 2014 - 1:07pm



NOTE:
 RUNWAY DESIGNATION LETTERS VARIES
 SEE PAVEMENT MARKING PLAN.

J:\6357_LAWA_APMIS\00_CADD\LAWA_STD_50.01.dwg Nov 14, 2014 - 1:08pm

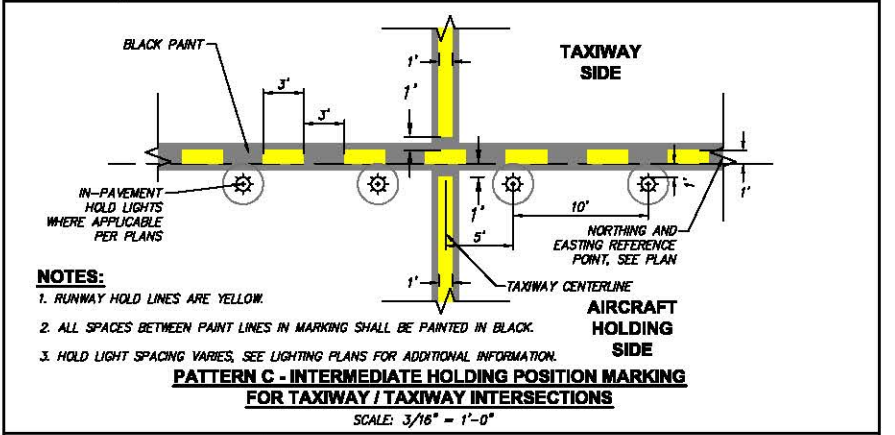
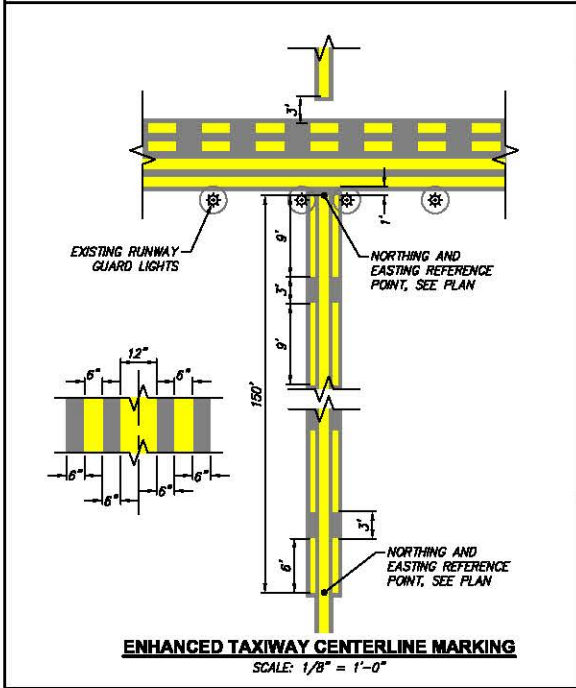
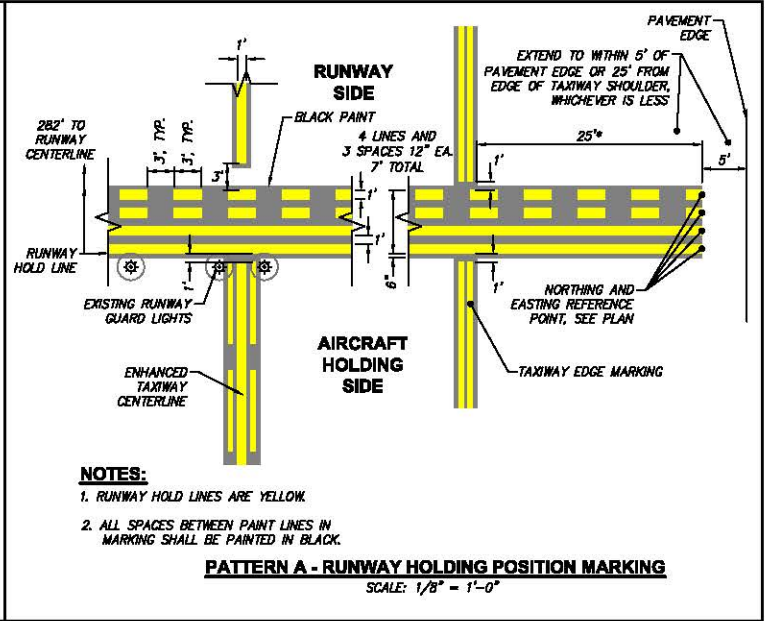
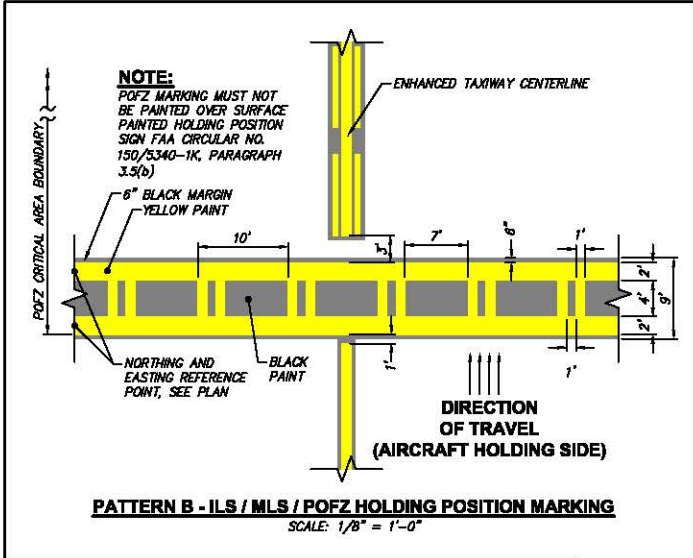
REVISION NO.	DESCRIPTION	DATE

APPROVED BY:
 LAWA STAFF
 CHECKED BY:
 ANTONIO FERMELLA
 DRAWN BY:
 WILLIAM P. MAREK
 DATE:
 11-14-2014



LAWA STANDARD PLANS
SURFACE PAINTED SIGNS

LAWA STANDARD PLAN NUMBER
50.03
 SHEET: 20 OF 28



GENERAL NOTES:

- ALL CONDITIONS SHOULD BE CHECKED AND VERIFIED AT THE JOB SITE. ANY DISCREPANCY SHALL BE REPORTED TO OFFICE OF ENGINEERING AT 424-846-5700.
- ALL MARKINGS SHALL BE LAID OUT BY THE LAWA SURVEYOR BEFORE PAINTING.
- ALL CONFLICTED MARKINGS SHALL BE COMPLETELY REMOVED BY WATER-BLASTING OR GRINDING (BLACKOUT PAINT IS NOT ACCEPTABLE).
- ALL WORK SHALL BE DONE IN ACCORDANCE WITH THE LATEST CODES AND ORDINANCES.

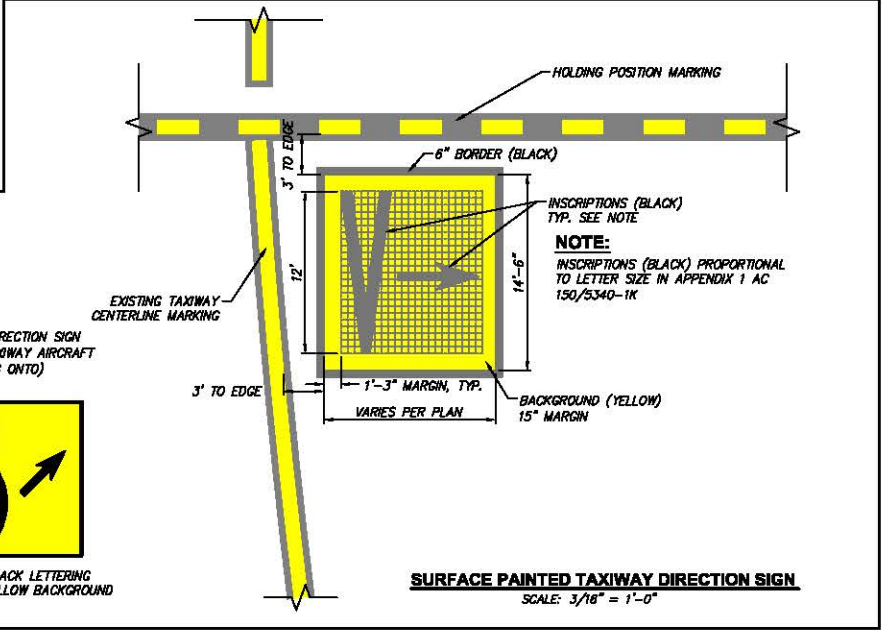
REFERENCES:

- LAWA AIRPORT LAYOUT PLAN DRAWING NO. 20090001-200A
- LAWA AIRFIELD INTERSECTION IMPROVEMENTS DRAWING NO. 20050048-B0
- LAWA SURVEY RECORDS
- FAA CIRCULAR NO. 150_5340_1K

TAXIWAY LOCATION SIGN (WHICH TAXIWAY AIRCRAFT IS LOCATED ON)
TAXIWAY DIRECTION SIGN (WHICH TAXIWAY AIRCRAFT IS TURNING ONTO)

REFERENCES:
• LAVA AIRPORT LAYOUT PLAN DRAWING NO. 20090001-200A
• LAVA AIRFIELD INTERSECTION IMPROVEMENTS DRAWING NO. 20050048-B0
• LAVA SURVEY RECORDS
• FAA CIRCULAR NO. 150_5340_1K

YELLOW LETTERING BLACK BACKGROUND
BLACK LETTERING YELLOW BACKGROUND



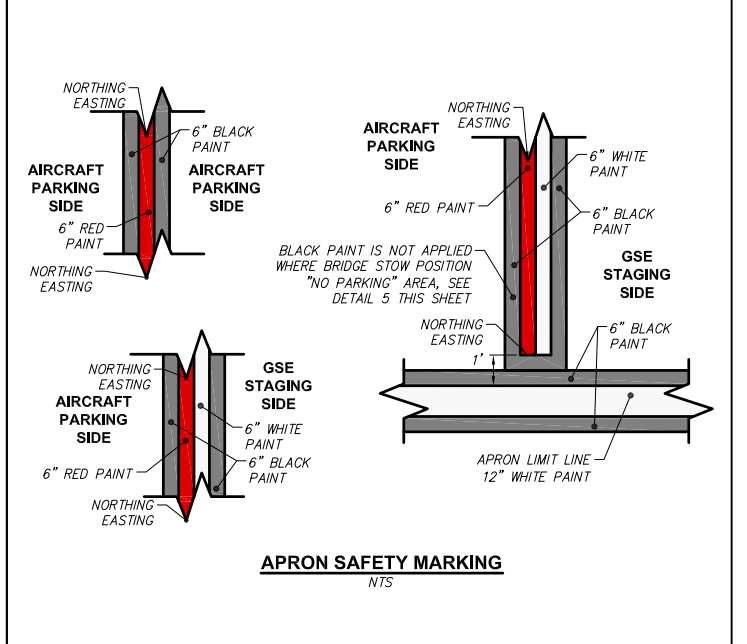
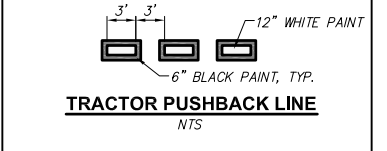
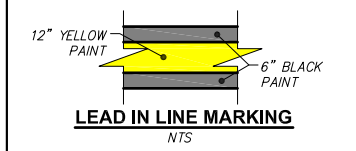
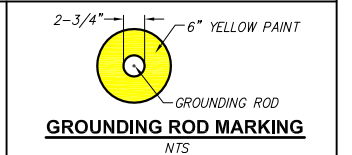
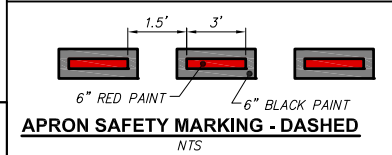
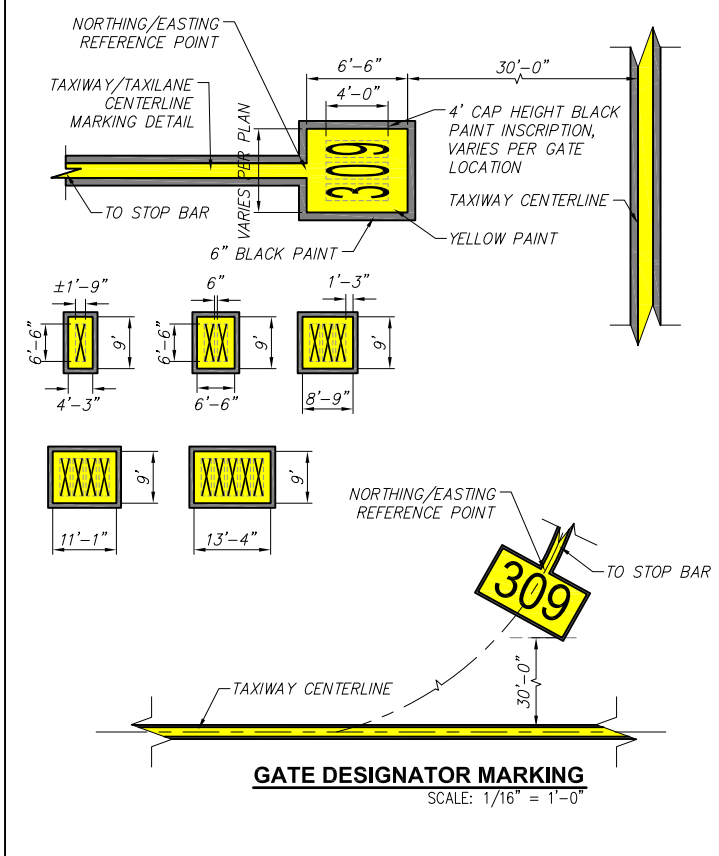
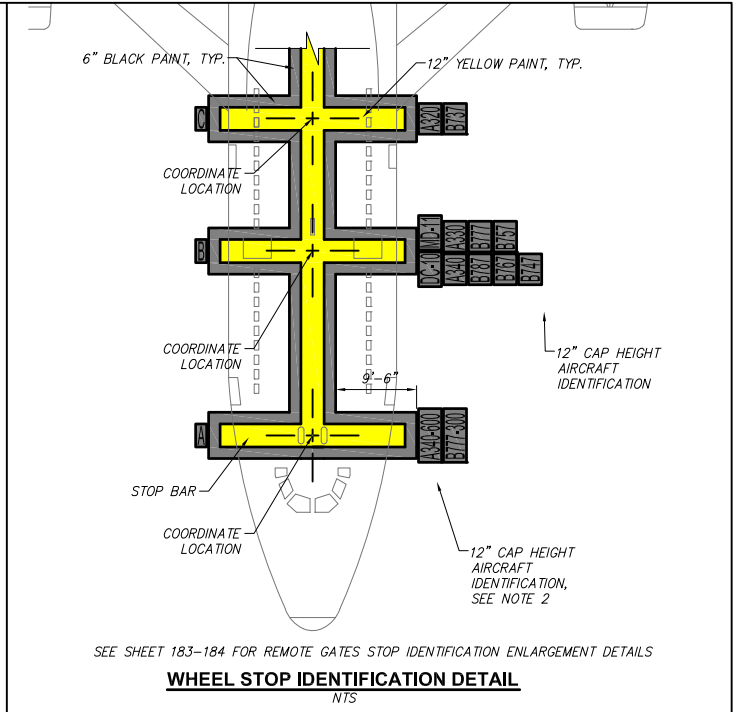
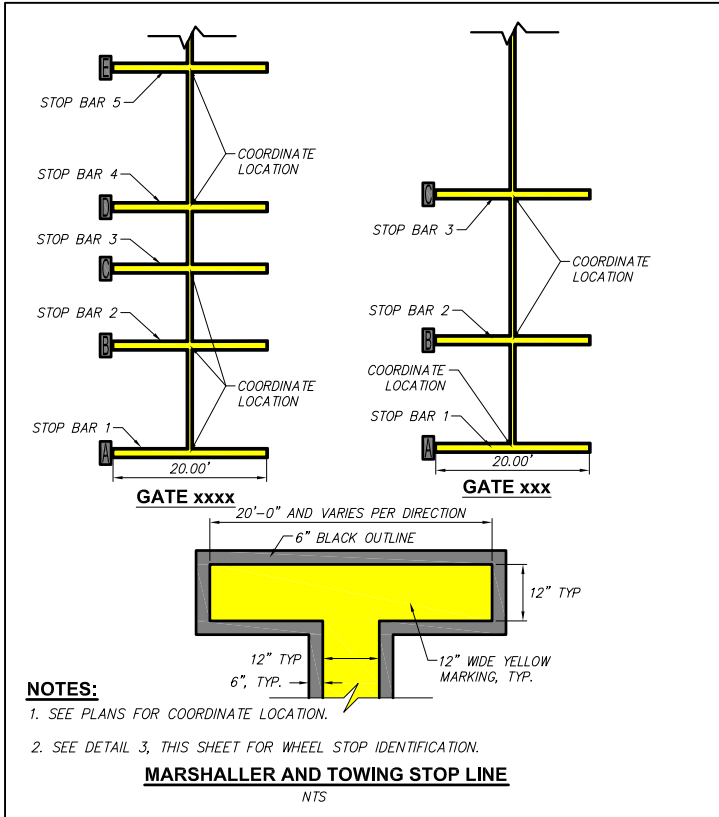
d:\46357_LAWA_APIAS\00_CADD\LAX\LAWA_STD_50.01.dwg Nov 14, 2014 - 1:08pm

REVISION NO.	DESCRIPTION	DATE

APPROVED BY:
LAWA STAFF
CHECKED BY:
ANTONE FERMELLA
DRAWN BY:
WILLIAM P. MAREK
DATE:
11-14-2014
HNTB

LAWA STANDARD PLANS
AIRCRAFT HOLD MARKING

LAWA STANDARD PLAN NUMBER
50.04
SHEET: 21 OF 28



REVISION NO.	DESCRIPTION	DATE

APPROVED BY:
 LAWA STAFF
 CHECKED BY:
 ANTOINE FERMELIA
 DRAWN BY:
 WILLIAM P. MAREK
 DATE:
 11-14-2014

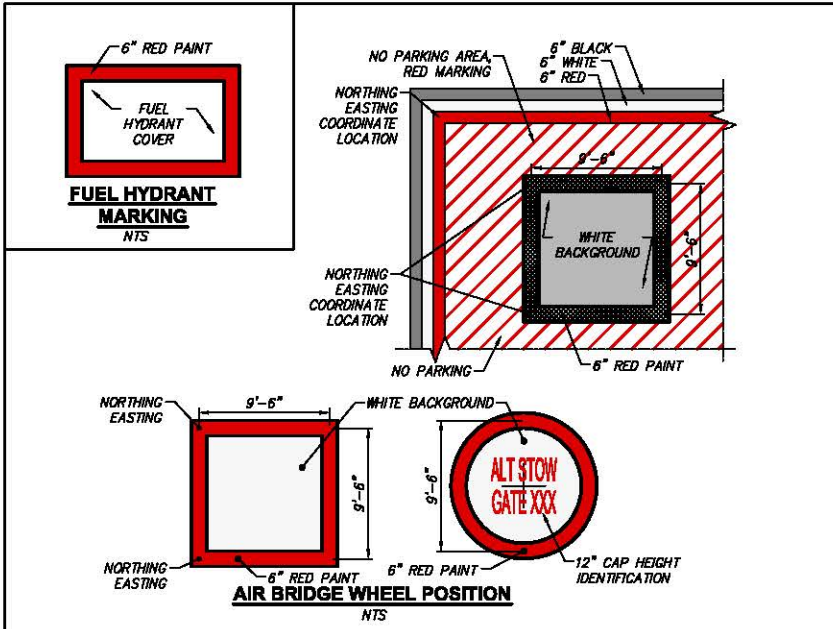
HNTB

LAWA STANDARD PLANS

APRON GATE MARKING

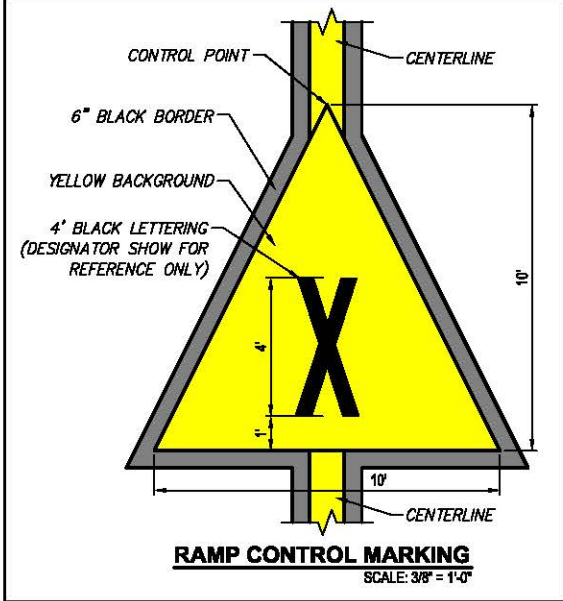
LAWA STANDARD PLAN NUMBER
50.05
 SHEET: 22 OF 29

V:\Airside Planning\LAWA Standard Plans - Airfield Standards\Standard Plans & Specs\AutoCadd\2015-02-24-LAWA STD-plans\50.01.dwg Mar. 05, 2018 - 2:43pm



GENERAL NOTES:

1. REFLECTORIZED PAINT WITH GLASS BEADS SHALL BE USED FOR ALL PERMANENT PAVEMENT MARKINGS EXCEPT FOR BLACK PAINT. ALL PERMANENT MARKING SHALL USE ANTI-SKID MATERIAL (GRIT ADD).
2. ALL INSCRIPTIONS FOR SIGNS AND GEOGRAPHIC POSITION MARKINGS SHALL CONFORM TO THE FEDERAL AVIATION ADMINISTRATION'S ADVISORY CIRCULAR AC-150/5340-1K, STANDARDS FOR AIRPORT MARKINGS, LATEST EDITION.
3. ALL PERMANENT MARKINGS SHALL HAVE A SIX-INCH (6") WIDE BLACK BORDER EXCEPT AIRCRAFT SAFETY ENVELOPE. BLACK PAINT BORDER SHALL BE PLACED AFTER PERMANENT MARKING FOR TAXIWAY/TAXILANE OR ROADWAYS. BLACK PAINT SHALL NOT BE PLACED FIRST ENGINEER WILL NOT PERMIT NEW YELLOW, WHITE OR RED PAINT TO BE PLACED ON TOP OF FRESH BLACK PAINT.
4. SEE PAVEMENT MARKING SHEETS - FOR THE LOCATIONS AND COORDINATES OF LEAD-IN LINES.
5. THE CONTRACTOR SHALL REMOVE CURING MATERIALS FROM THE PCC PAVEMENT PRIOR TO APPLYING PAINT.
6. FINAL MARKINGS SHALL ALIGN WITH EXISTING MARKINGS AT ALL MATCH POINTS. OVERLAP EXISTING PAVEMENT MARKINGS 5" AT ALL MATCH POINTS.
7. CONTRACTOR SHALL REINSTATE ALL PAINT MARKINGS FADED/REMOVED AS A RESULT OF CONSTRUCTION AND HAULING OPERATIONS.



d:\46357_LAWA_APMIS\00_CADD\LAX\LAWA_STD\50.07.dwg Nov 14, 2014 - 1:09pm

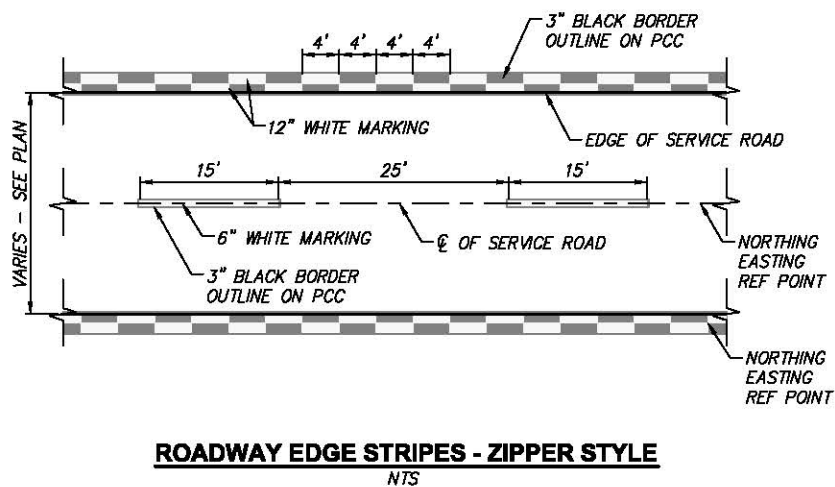
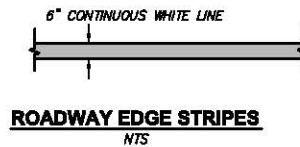
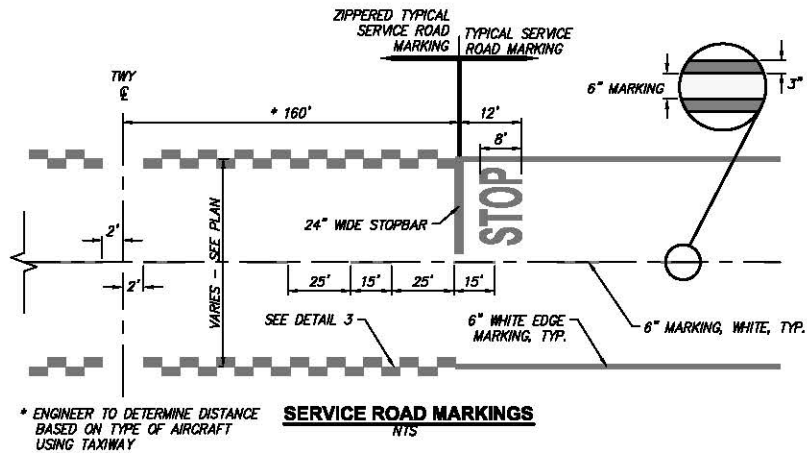
REVISION NO.	DESCRIPTION	DATE

APPROVED BY:
LAWA STAFF
CHECKED BY:
ANTONE FERMELLA
DRAWN BY:
WILLIAM P. MAREK
DATE:
11-14-2014



LAWA STANDARD PLANS
APRON SURFACE MARKING

LAWA STANDARD PLAN NUMBER
50.06
SHEET: 23 OF 28



d:\6357_LAWA_LAPMS\00_CADD\LAX\LAWA_STD\50.07.dwg Nov 14, 2014 - 1:09pm

REVISION NO.	DESCRIPTION	DATE

APPROVED BY:
LAWA STAFF

CHECKED BY:
ANTONE FERRELLA

DRAWN BY:
WILLIAM P. MAREK

DATE:
11-14-2014

HNTB

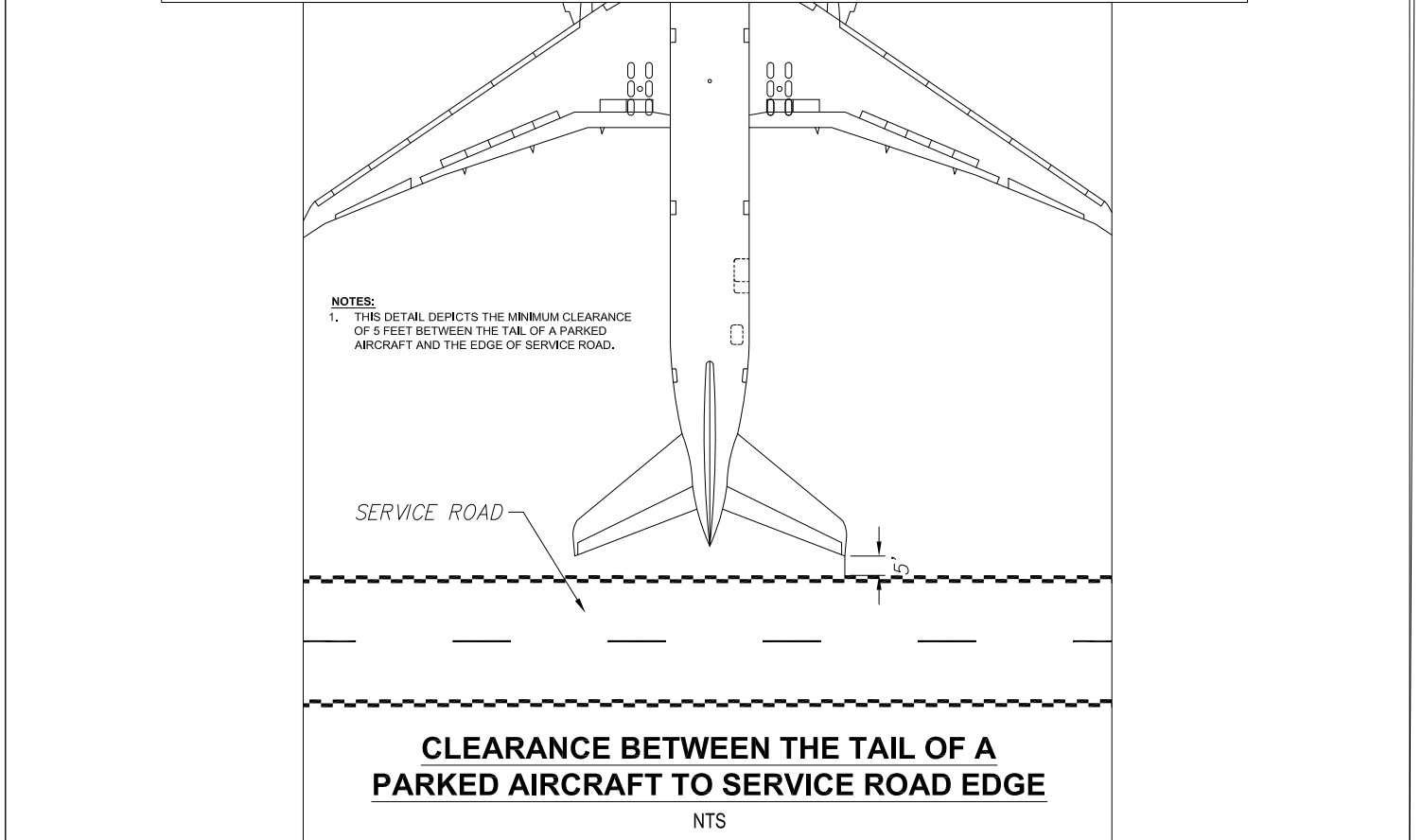
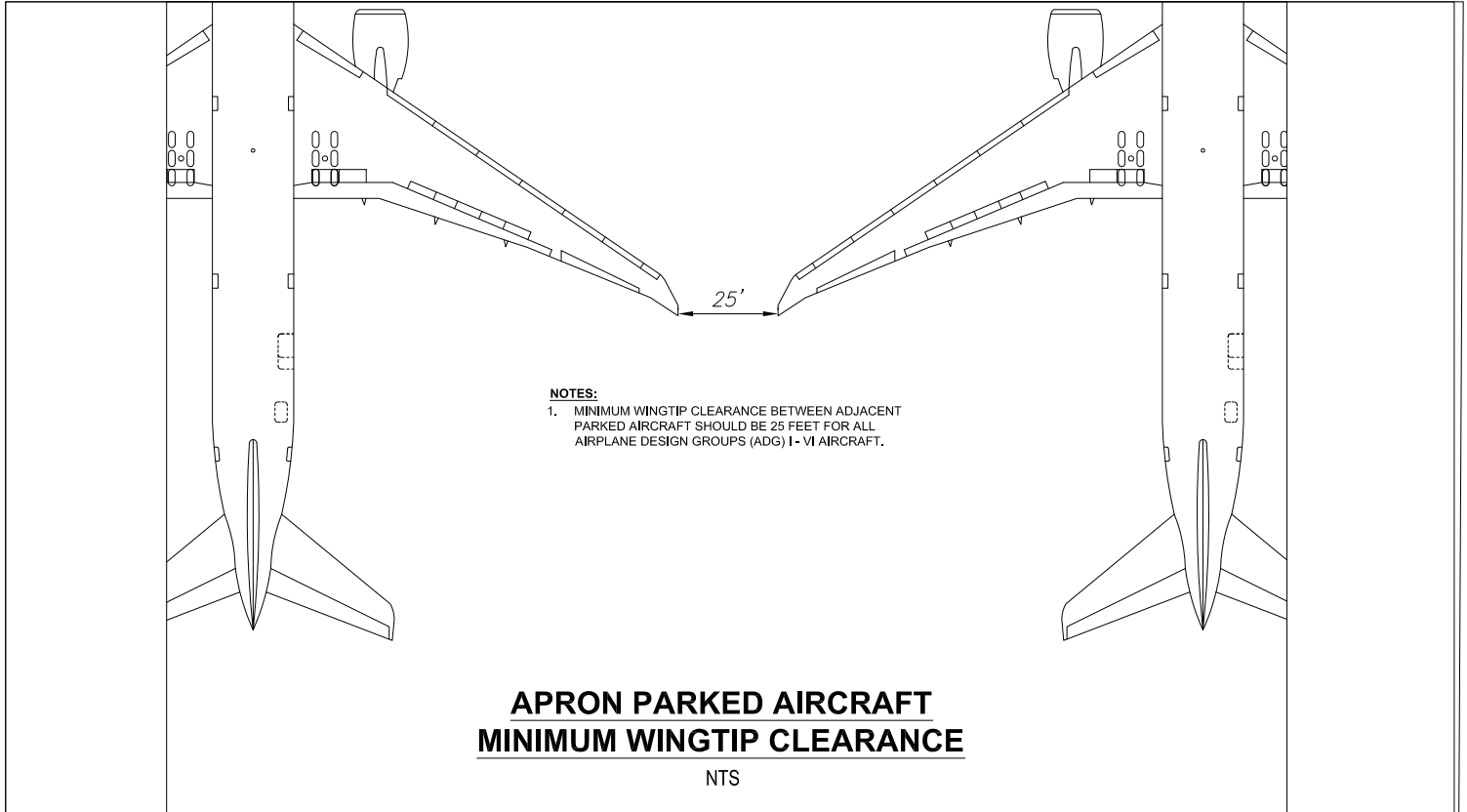
LAWA STANDARD PLANS

SERVICE ROAD MARKING

LAWA STANDARD PLAN NUMBER

50.07

SHEET: 24 OF 28



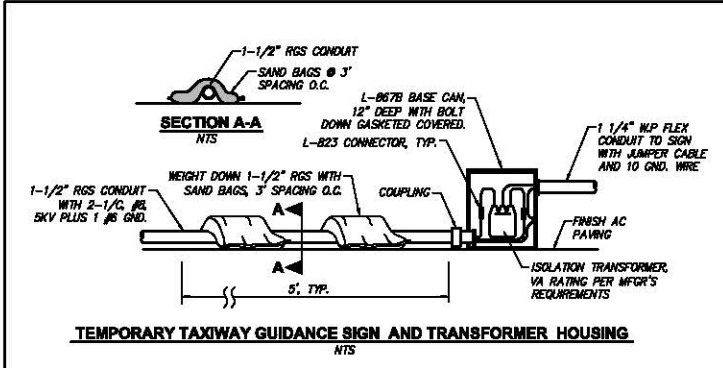
REVISION NO.	DESCRIPTION	DATE

APPROVED BY:
LAWA STAFF
CHECKED BY:
ANTONE FERRELIA
DRAWN BY:
WILLIAM P. MAREK
DATE:
11-14-2014

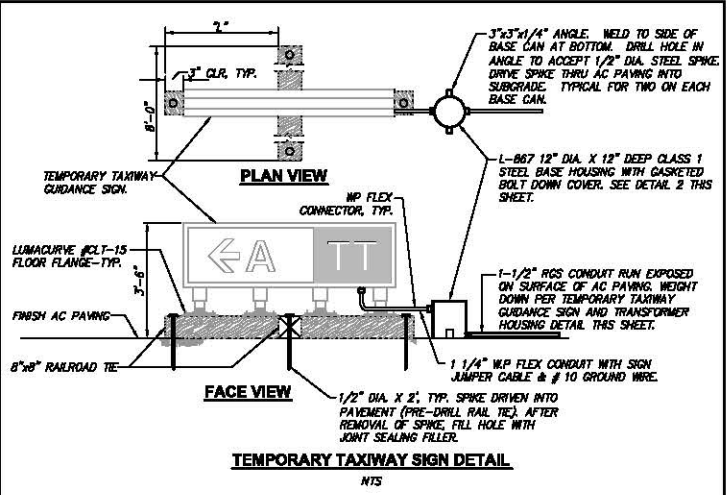


LAWA STANDARD PLANS
AIRCRAFT CLEARANCE

LAWA STANDARD PLAN NUMBER
50.08
SHEET: 24 OF 29



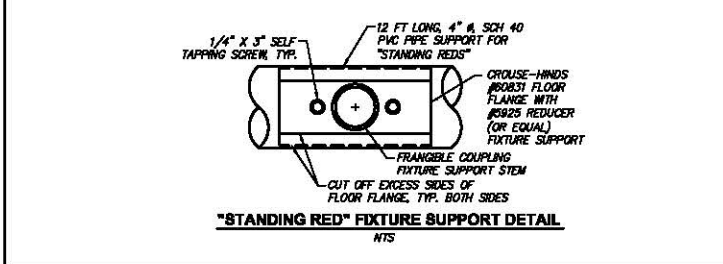
TEMPORARY TAXIWAY GUIDANCE SIGN AND TRANSFORMER HOUSING
NTS



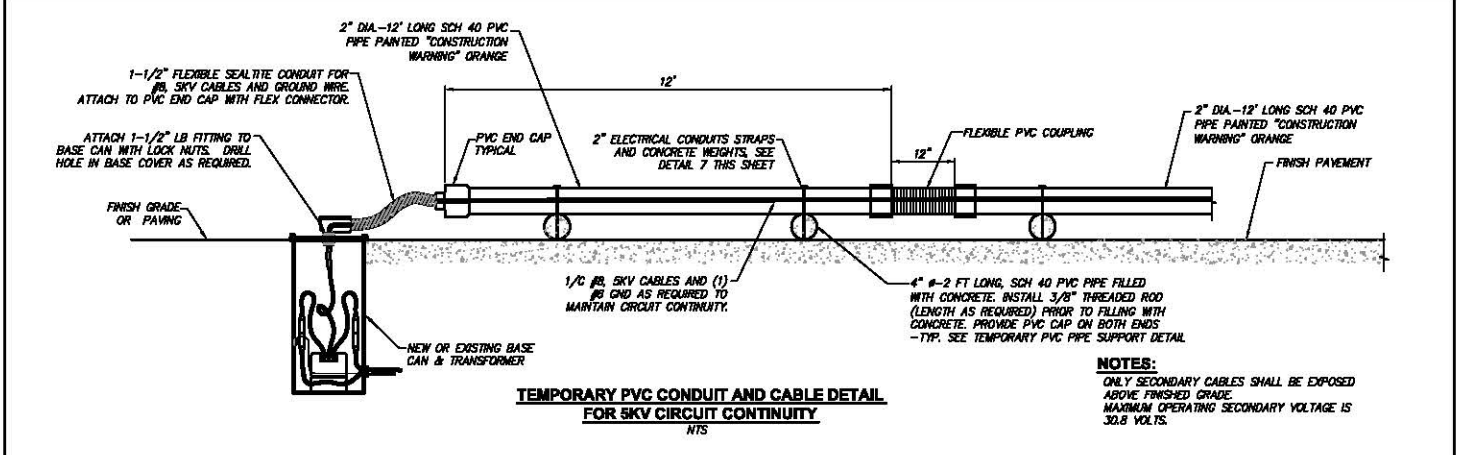
TEMPORARY TAXIWAY SIGN DETAIL
NTS

NOTES:

1. ALL TEMPORARY GUIDANCE SIGNS SHALL BE INSTALLED ON A TEMPORARY SUPPORT STRUCTURE, WITH NEW BASE HOUSING, L-830 TRANSFORMER, NEW CABLES AND ALL APPURTENANCES REQUIRED FOR A COMPLETE INSTALLATION.
2. "2" DIMENSION IS BASED ON TOTAL LENGTH OF SIGN REQUIRED. MORE THAN ONE RAIL ROAD TIE MAY BE REQUIRED.
3. REFER TO SIGN SCHEDULE ON SHEET E402 FOR SIGN NOMENCLATURE.
4. AFTER CONSTRUCTION INVOLVING TEMPORARY TAXIWAY SIGNS WORK IS COMPLETED, DELIVER SIGNS, TRANSFORMERS & BASE HOUSING TO LAVA C&M.



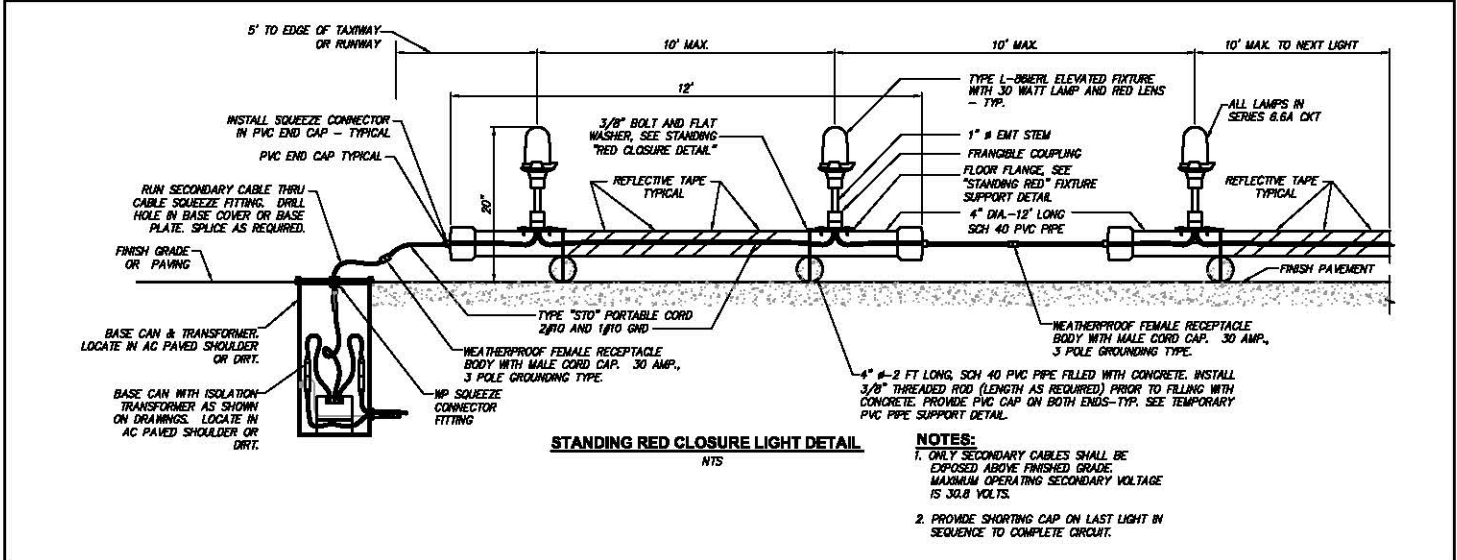
"STANDING RED" FIXTURE SUPPORT DETAIL
NTS



TEMPORARY PVC CONDUIT AND CABLE DETAIL FOR SKV CIRCUIT CONTINUITY
NTS

NOTES:

1. ONLY SECONDARY CABLES SHALL BE EXPOSED ABOVE FINISHED GRADE.
2. MAXIMUM OPERATING SECONDARY VOLTAGE IS 30.8 VOLTS.



STANDING RED CLOSURE LIGHT DETAIL
NTS

NOTES:

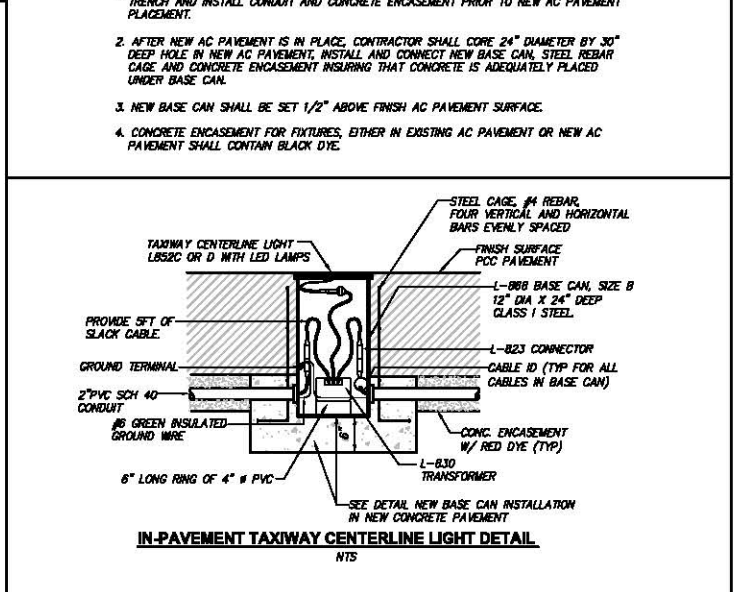
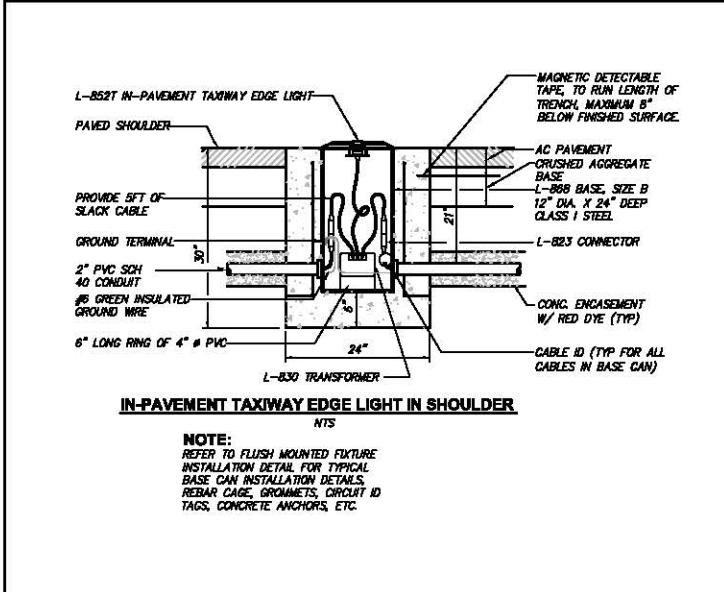
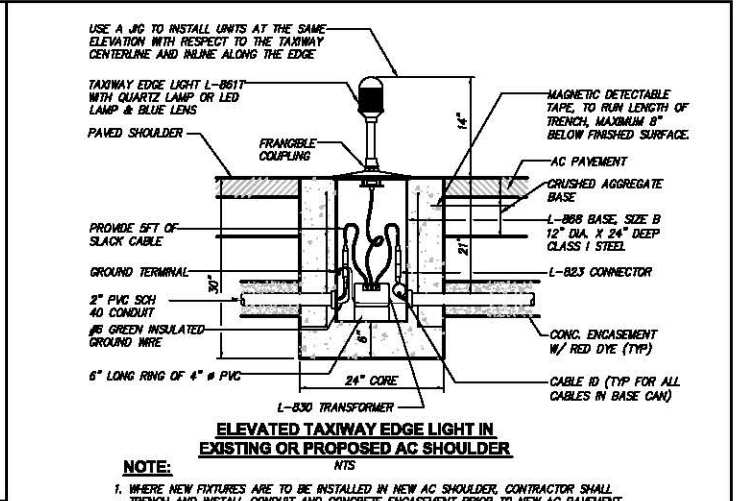
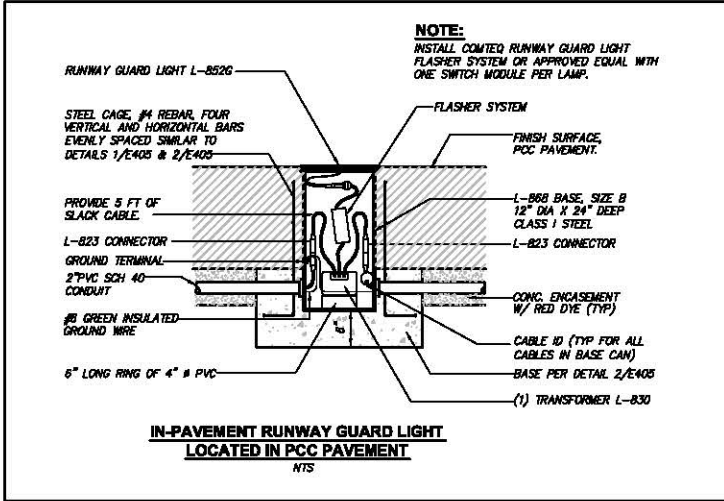
1. ONLY SECONDARY CABLES SHALL BE EXPOSED ABOVE FINISHED GRADE.
2. MAXIMUM OPERATING SECONDARY VOLTAGE IS 30.8 VOLTS.
3. PROVIDE SHORTING CAP ON LAST LIGHT IN SEQUENCE TO COMPLETE CIRCUIT.

REVISION NO.	DESCRIPTION	DATE

APPROVED BY:
LAVA STAFF
CHECKED BY:
ANTONE FERMELLA
DRAWN BY:
WILLIAM P. MAREK
DATE:
11-14-2014
HNTB

LAVA STANDARD PLANS
TEMPORARY ELECTRICAL
LAVA STANDARD PLAN NUMBER
E20.01
SHEET: 25 OF 28

d:\46357_LAVA_APMIS\00_0400\LAVA\STD\E20.01.dwg Nov 14, 2014 - 1:10pm



REVISION NO.	DESCRIPTION	DATE

APPROVED BY:
LAWA STAFF

CHECKED BY:
ANTONE FERRELLA

DRAWN BY:
WILLIAM P. MAREK

DATE:
11-14-2014

HNTB

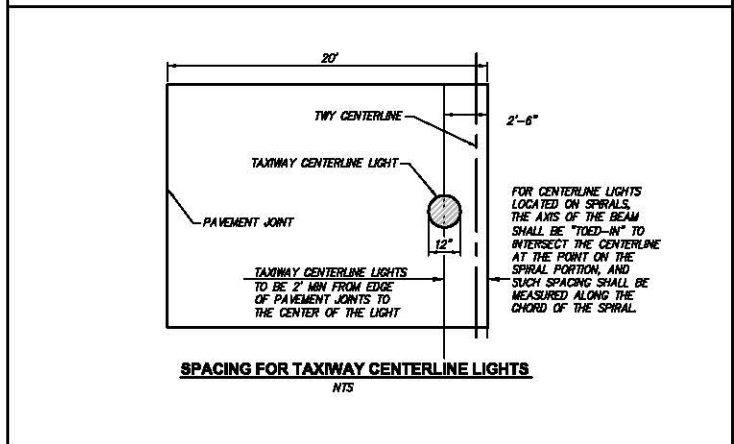
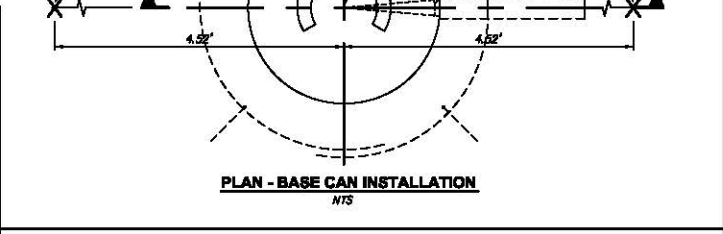
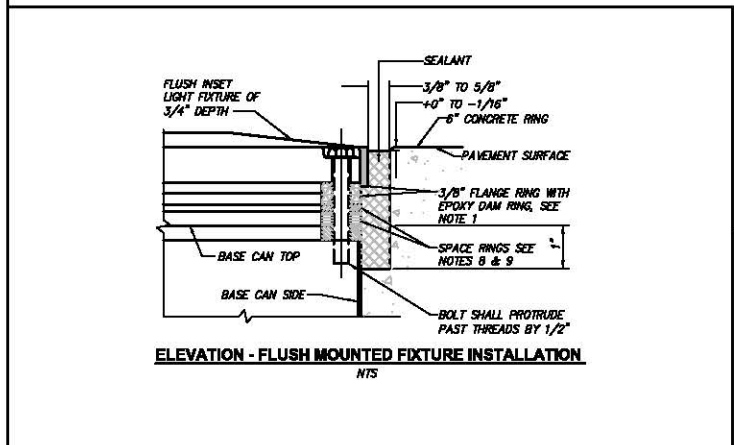
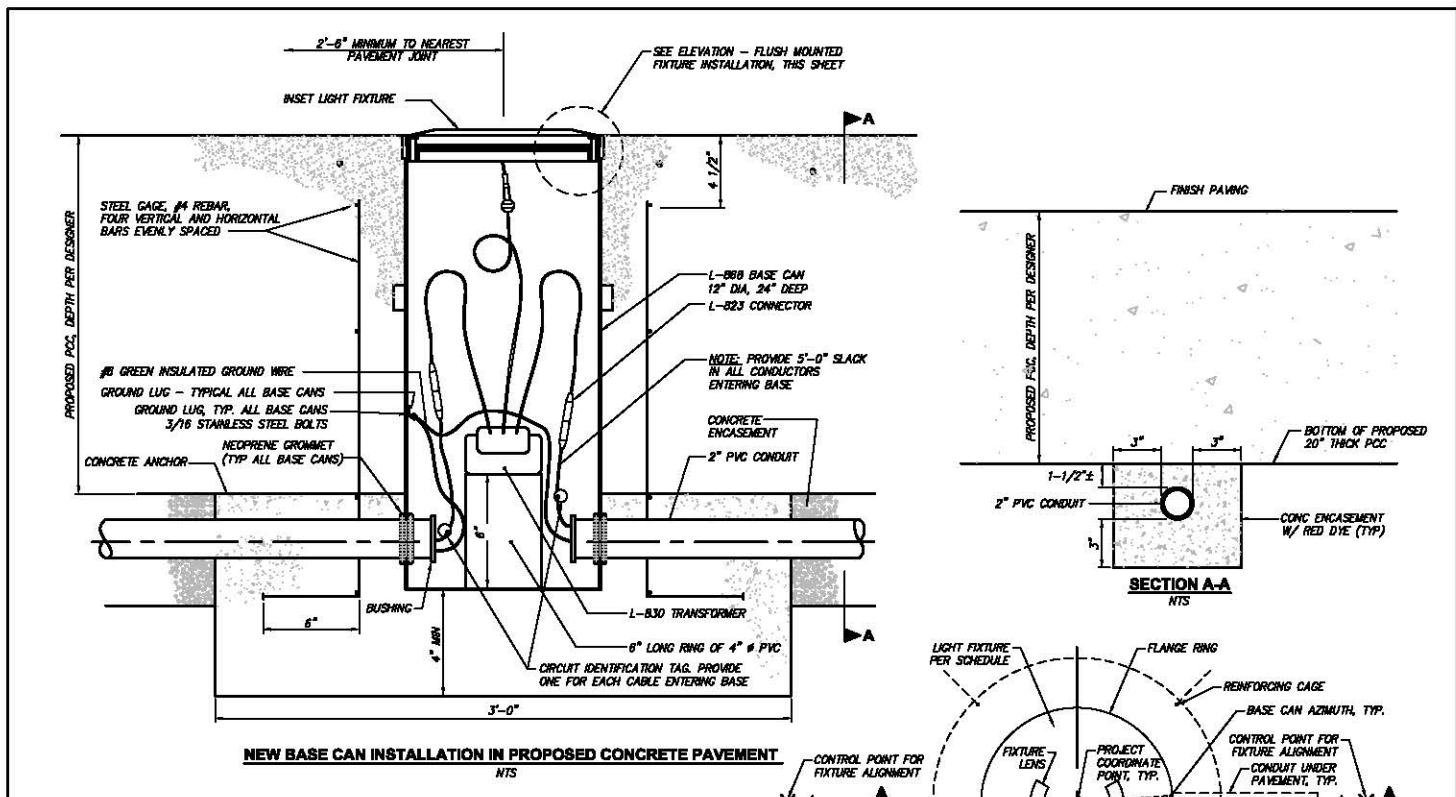
LAWA STANDARD PLANS

BASE CAN INSTALLATION IN PROPOSED PCC PAVEMENT

LAWA STANDARD PLAN NUMBER
E20.02

SHEET: 26 OF 28

d:\46357_LAWA\APMS\00_GADD\LAX\LAWA_STD\E20.D1.dwg, Nov 14, 2014, 1:11pm



REVISION NO.	DESCRIPTION	DATE

APPROVED BY:
LAWA STAFF

CHECKED BY:
ANTONE FERMELLA

DRAWN BY:
WILLIAM P. MAREK

DATE:
11-14-2014

HNTB

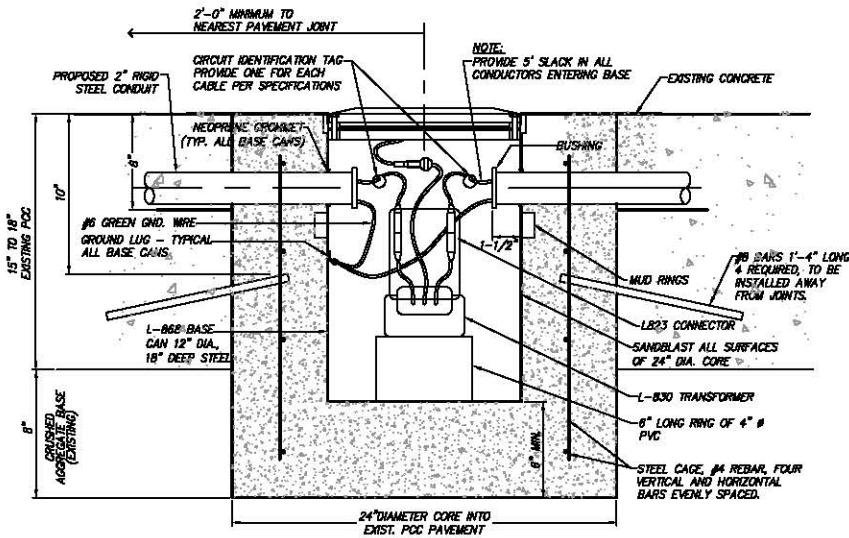
LAWA STANDARD PLANS

BASE CAN INSTALLATION IN PROPOSED PCC PAVEMENT

LAWA STANDARD PLAN NUMBER
E20.03

SHEET: 27 OF 28

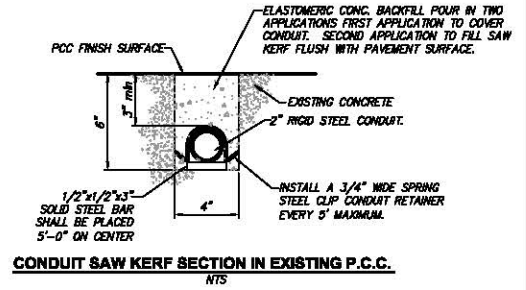
d:\46357_LAWA\APMS\00_GADD\LAX\LAWA_STD\E20.Dwg Nov 14, 2014 - 1:11pm



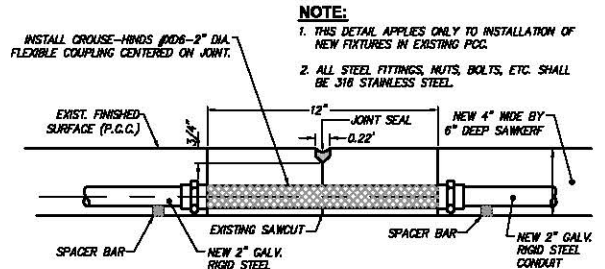
NEW BASE CAN INSTALLATION IN EXISTING CONCRETE PAVEMENT
NTS

NOTES:

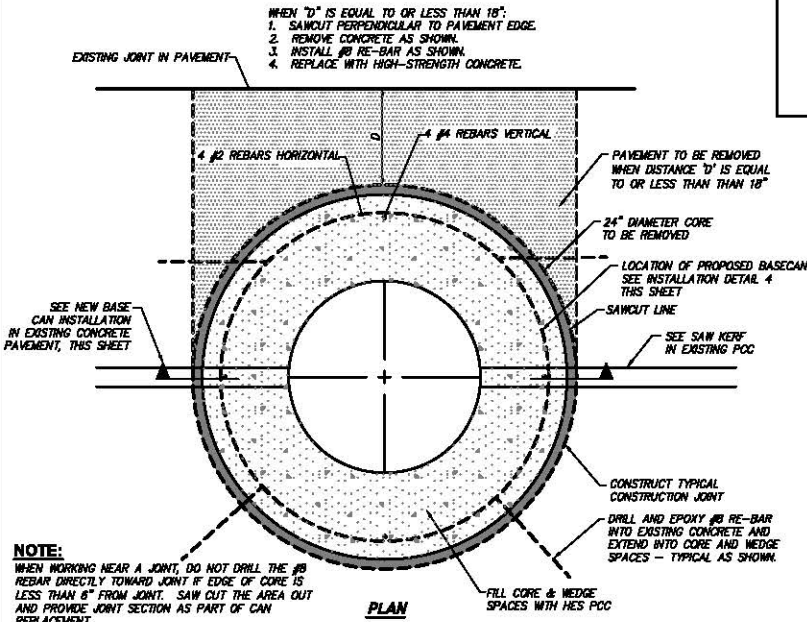
1. FOR SAW CUT SEE DETAILS 2 AND 3, THIS SHEET.
2. EPOXY REBAR IN CONCRETE.
3. STEEL CAGE SHALL BE #4 REBAR, FOUR (4) VERTICAL AND FOUR (4) HORIZONTAL BARS EVENLY SPACED.
4. USE RAPID SET, NON-SHRINK GROUT FOR CONCRETE BACKFILL.
5. ALL STEEL FITTINGS, NUTS, BOLTS, ETC. SHALL BE 316 STAINLESS STEEL.



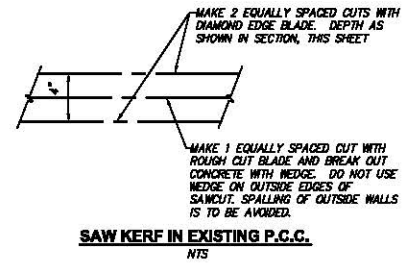
CONDUIT SAW KERF SECTION IN EXISTING P.C.C.
NTS



FLEXIBLE COUPLING INSTALLATION IN TRANSVERSE & LONGITUDINAL JOINTS OF EXISTING P.C.C. PAVEMENT
NTS



CORING AND FIXTURE INSTALLATION
NTS



SAW KERF IN EXISTING P.C.C.
NTS

d:\6357_LAWA_APMIS\00_CADD\LAWA_STD\E20.Dwg Nov 14, 2014 - 1:12pm

REVISION NO.	DESCRIPTION	DATE

APPROVED BY:
LAWA STAFF
CHECKED BY:
ANTONE FERMELLA
DRAWN BY:
WILLIAM P. MAREK
DATE:
11-14-2014



LAWA STANDARD PLANS
TAXIWAY AND GUARD LIGHT INSTALLATION DETAILS

LAWA STANDARD PLAN NUMBER
E20.04
SHEET: 28 OF 28