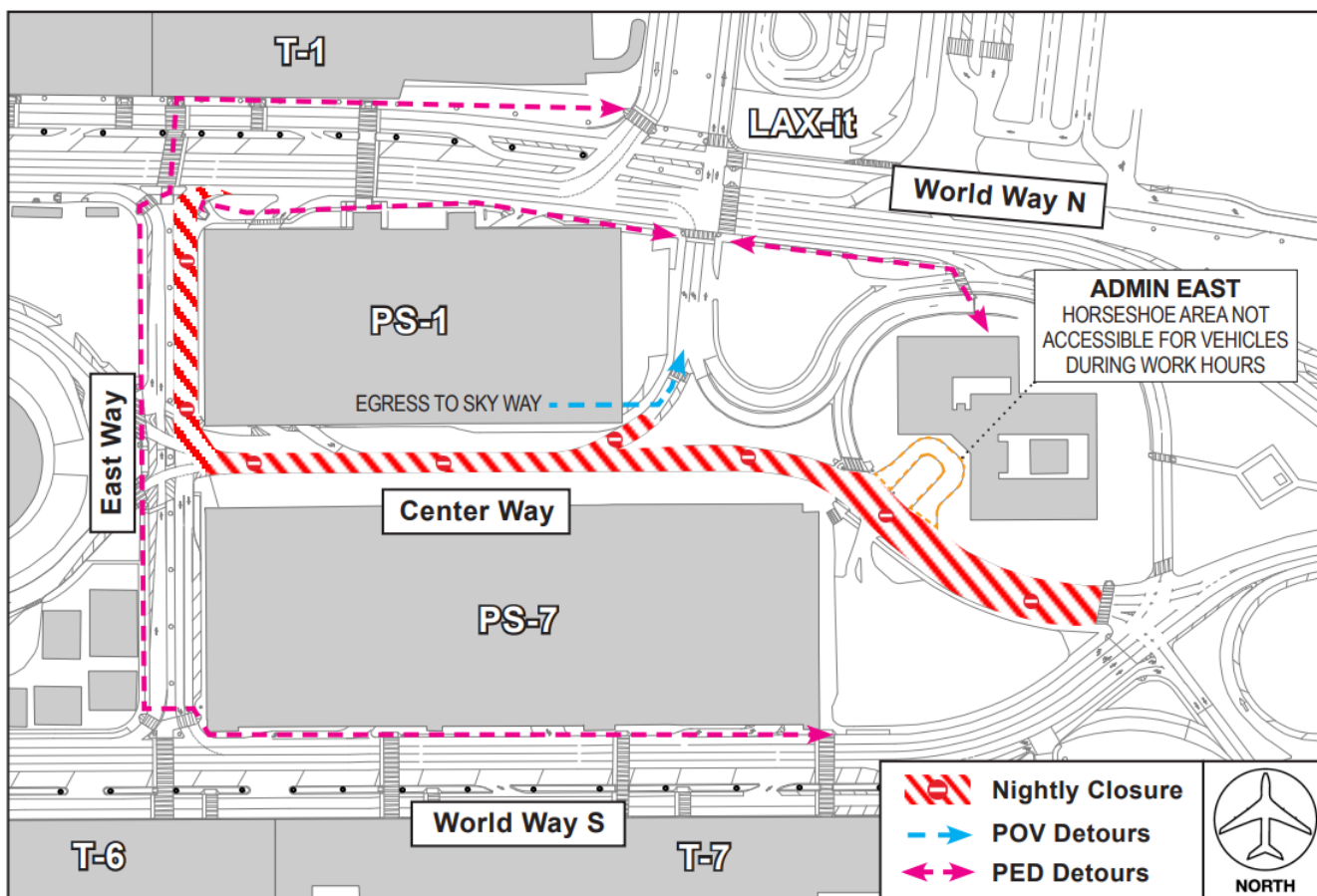


CONSTRUCTION HOT TOPICS

#1 CENTER WAY ROADWAY IMPROVEMENTS

TO INSTALL PERMANENT ROADWAY STRIPING, THE APM PROJECT WILL CLOSE CENTER WAY BETWEEN EAST WAY AND WORLD WAY SOUTH ON SUNDAY, AUGUST 6 FROM 1AM TO 11AM. SOUTHBOUND EAST WAY BETWEEN WORLD WAY NORTH AND CENTER WAY NORTH WILL ALSO BE CLOSED. DETOURS, SIGNAGE AND FLAGGERS WILL BE IN PLACE.



THE DETOURS:

VEHICULAR DETOURS (1AM to 11AM): PS-1 egress will use a temporary detour to Sky Way; the Horseshoe Area at Admin East entrance will not be accessible for vehicles

PEDESTRIAN DETOURS (1AM to 7AM): Pedestrians will use East Way to reach LAX-it; access to Admin East is maintained via the north door from the pedestrian path along World Way North.



📞 LAX Construction Hotline: 310-649-5292 📧 LAXConstructionHotline@LAWA.org
flyLAX.com 🐦 @flyLAXairport 🌐 LAInternationalAirport

CONSTRUCTION HOT TOPICS

#2

SB I-405 RAMP & CD IMPACTS

TO FACILITATE LAMP CONSTRUCTION, SOUTHBOUND I-405 RAMPS AND THE CD (COLLECTOR DISTRIBUTOR) AT CENTURY BOULEVARD WEST WILL BE IMPACTED NIGHTLY FROM 9PM TO 6AM PER THE FOLLOWING SCHEDULE:

MON. 7/31

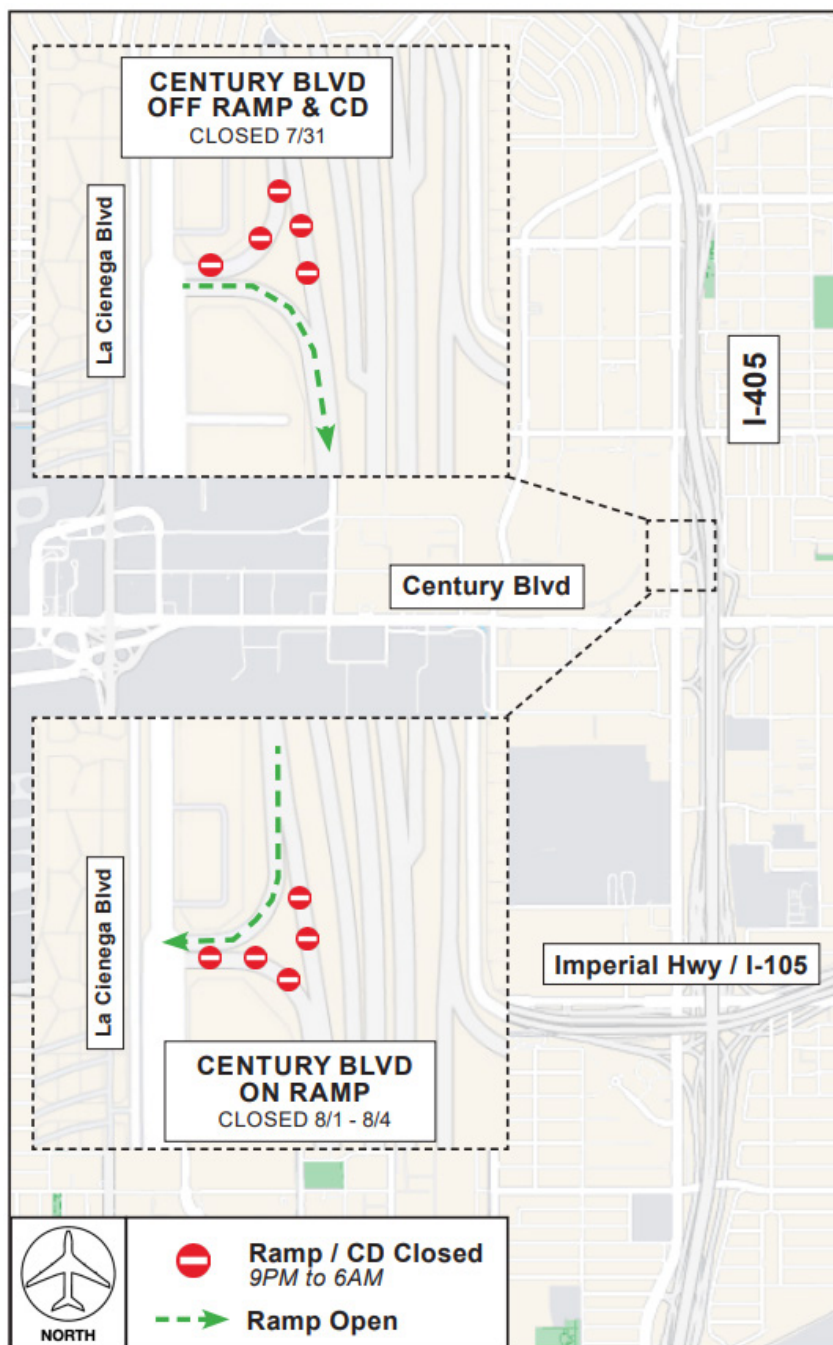
OFF RAMP & CD CLOSED

TUE. 8/1 - FRI. 8/4

ON RAMP & CD CLOSED

PLAN AHEAD:

When ramps are closed, advanced signage will be in place to notify motorists. Detour signage will be in place for all closures. Please watch for posted signage and use caution When traveling near construction areas.



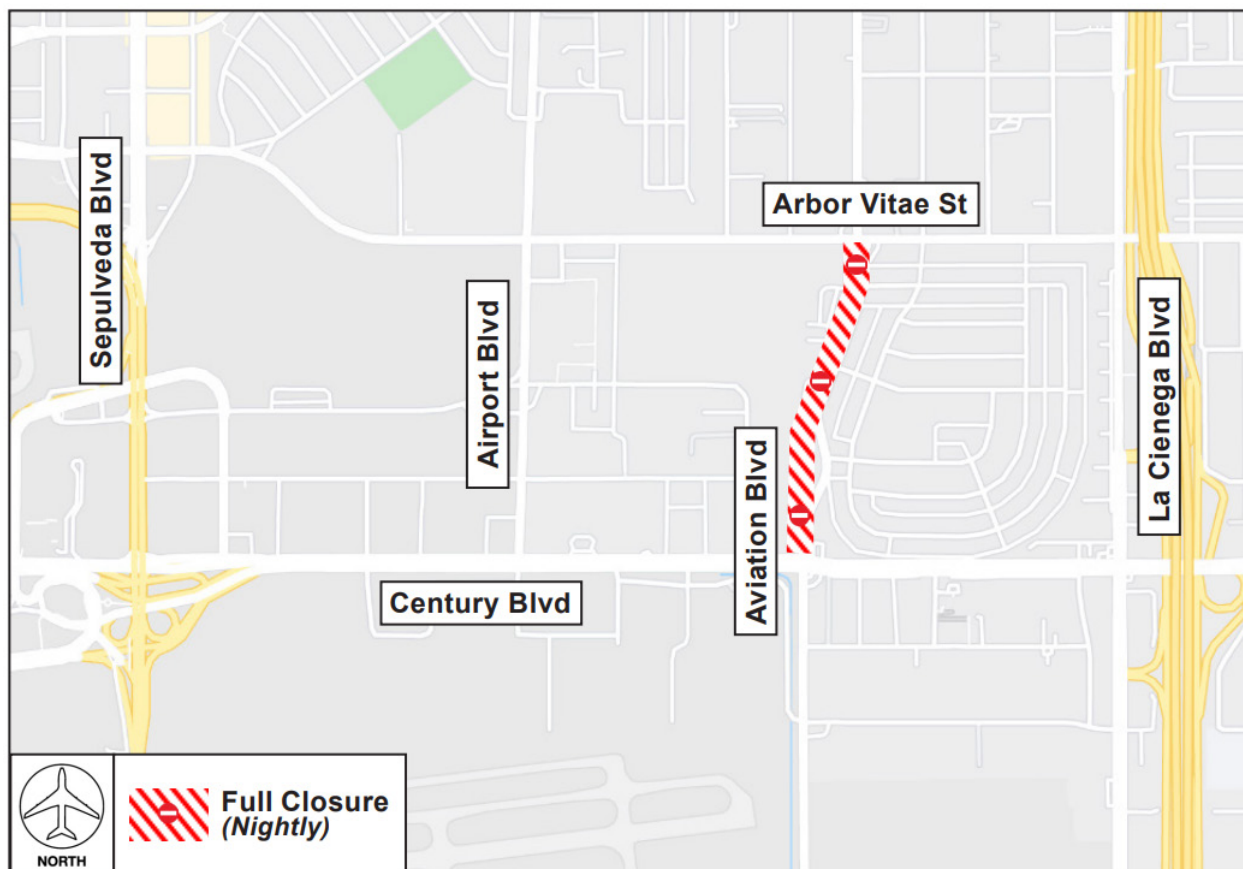
☎ LAX Construction Hotline: 310-649-5292 ☎ LAXConstructionHotline@LAWA.org

flyLAX.com 🐦 @flyLAXairport 🌐 LAInternationalAirport

CONSTRUCTION HOT TOPICS

#3 AVIATION BOULEVARD NIGHTLY CLOSURES

TO FACILITATE CONSTRUCTION ACTIVITIES FOR THE LANDSIDE ACCESS MODERNIZATION PROGRAM, AVIATION BOULEVARD BETWEEN ARBOR VITAE STREET AND CENTURY BOULEVARD WILL BE CLOSED ON AN AS-NEEDED BASIS THROUGH THURSDAY, AUGUST 31, NIGHTLY FROM 9PM TO 6AM. DETOUR SIGNAGE WILL BE IN PLACE WHEN CLOSURES ARE IMPLEMENTED.



THE IMPACTS:

Traffic and access to local businesses will be maintained at all times. Detours, signage and flaggers will be in place to help maintain traffic.



📞 LAX Construction Hotline: 310-649-5292 📧 LAXConstructionHotline@LAWA.org
flyLAX.com 🐦 @flyLAXairport 🌐 LAInternationalAirport

CONSTRUCTION HOT TOPICS

#4

24/7 CTA LANE RESTRICTIONS

PLEASE NOTE:

While not illustrated on the map, one lane of Upper West Way (Departures Level) is closed 24/7 through August 17, 2023

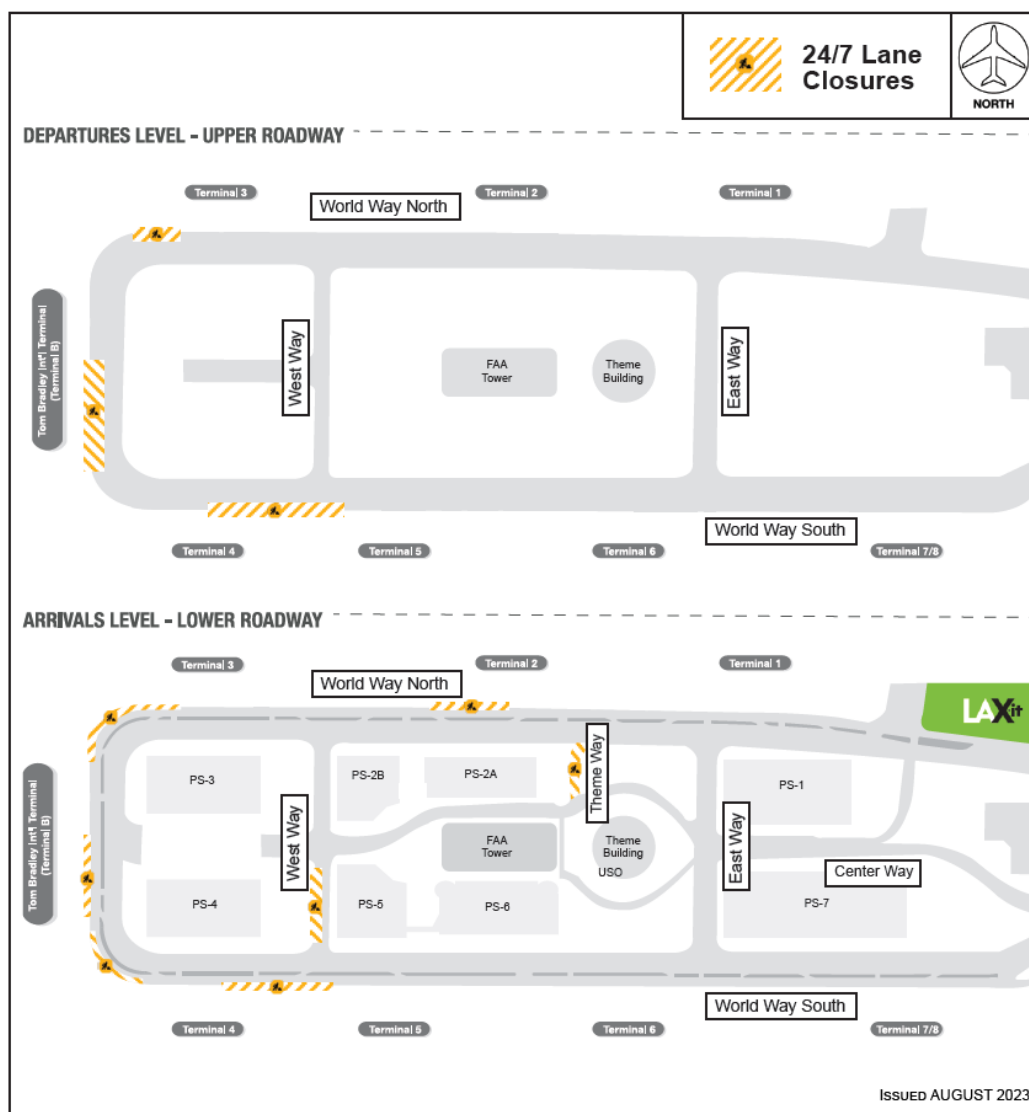
ACCESS MAINTAINED:

Traffic around the Central Terminal Area will be maintained at all times, as well as access to passenger pick-up and drop-off

PLAN AHEAD:

Motorists should plan ahead for potential delays

SCHEDULED 24/7 LANE RESTRICTIONS FOR CTA DEPARTURES / UPPER LEVEL AND ARRIVALS / LOWER LEVEL ROADWAYS ARE ILLUSTRATED ON THE MAP BELOW FOR THE MONTH OF AUGUST 2023



LAX Construction Hotline: 310-649-5292 LAXConstructionHotline@LAWA.org
flyLAX.com @flyLAXairport LAInternationalAirport