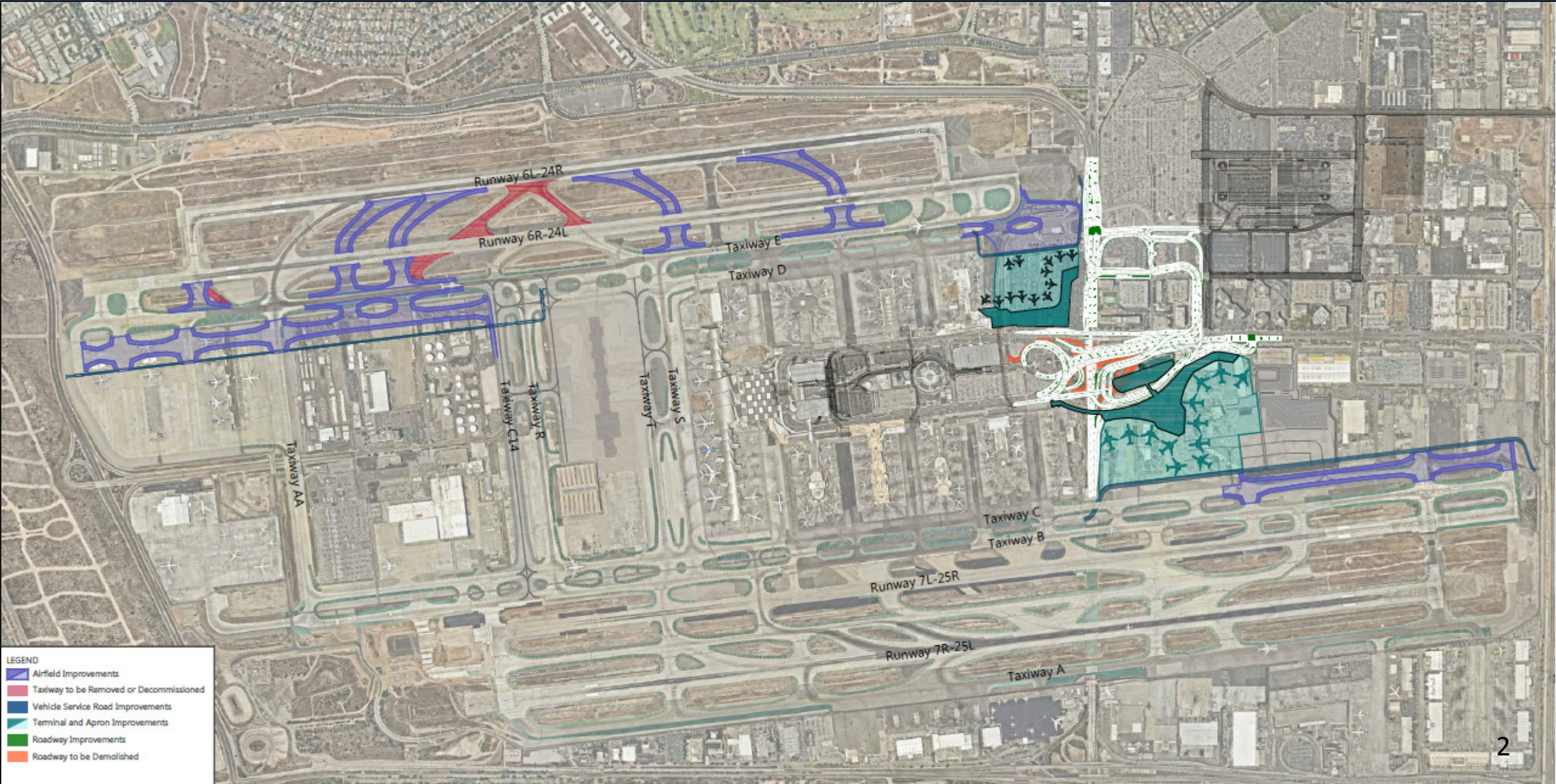




AIRFIELD & TERMINAL MODERNIZATION PROJECT

Project Overview

*LAX Guest Experience
Partners Council
June 3, 2019*



Project Elements

Airfield Improvements

- ✈ Relocate runway exits
- ✈ Extension and improvement of taxiways

Enhances safety, efficiency and helps reduce delays

Terminal Improvements

- ✈ Terminal 9 (T9) - 12 gate facility (12 new gates)
- ✈ Concourse 0 (C0) - 11 gate facility (9 new gates)
- ✈ All full-service international capabilities

Better guest experience (extra seating, check-in areas, security screening, charging stations, etc.)

Gates at T9 and C0 will replace West Remote Gates

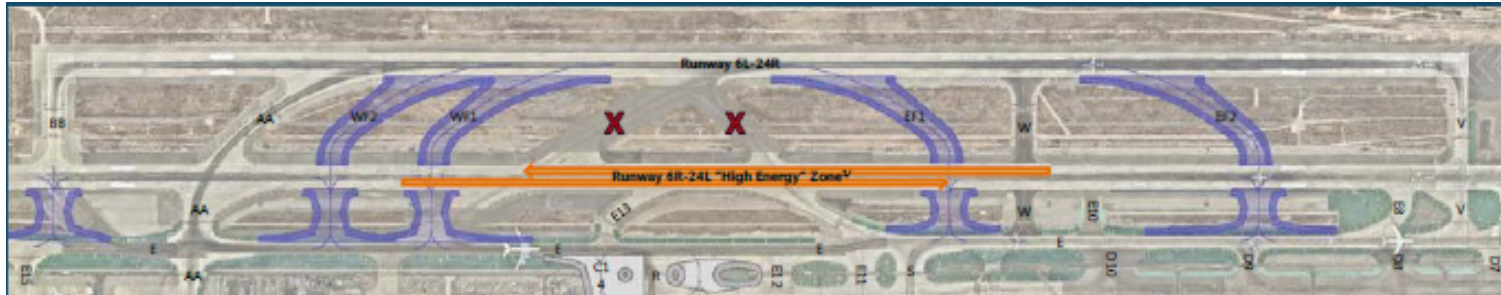
Landside Improvements

- ✈ Will serve Terminal 9
- ✈ Improve CTA access & reduce congestion on nearby public roads
- ✈ New APM station at Terminal 9 & pedestrian connector to Terminal 8

Airfield Improvements

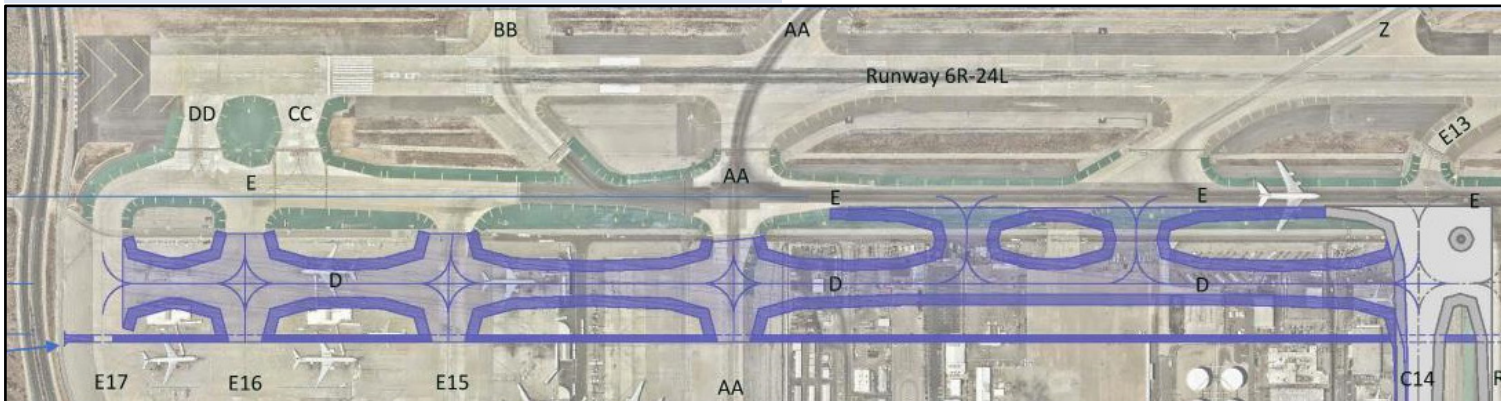


Airfield Improvements



Exit Taxiway Improvements

Taxiway Improvements – West End

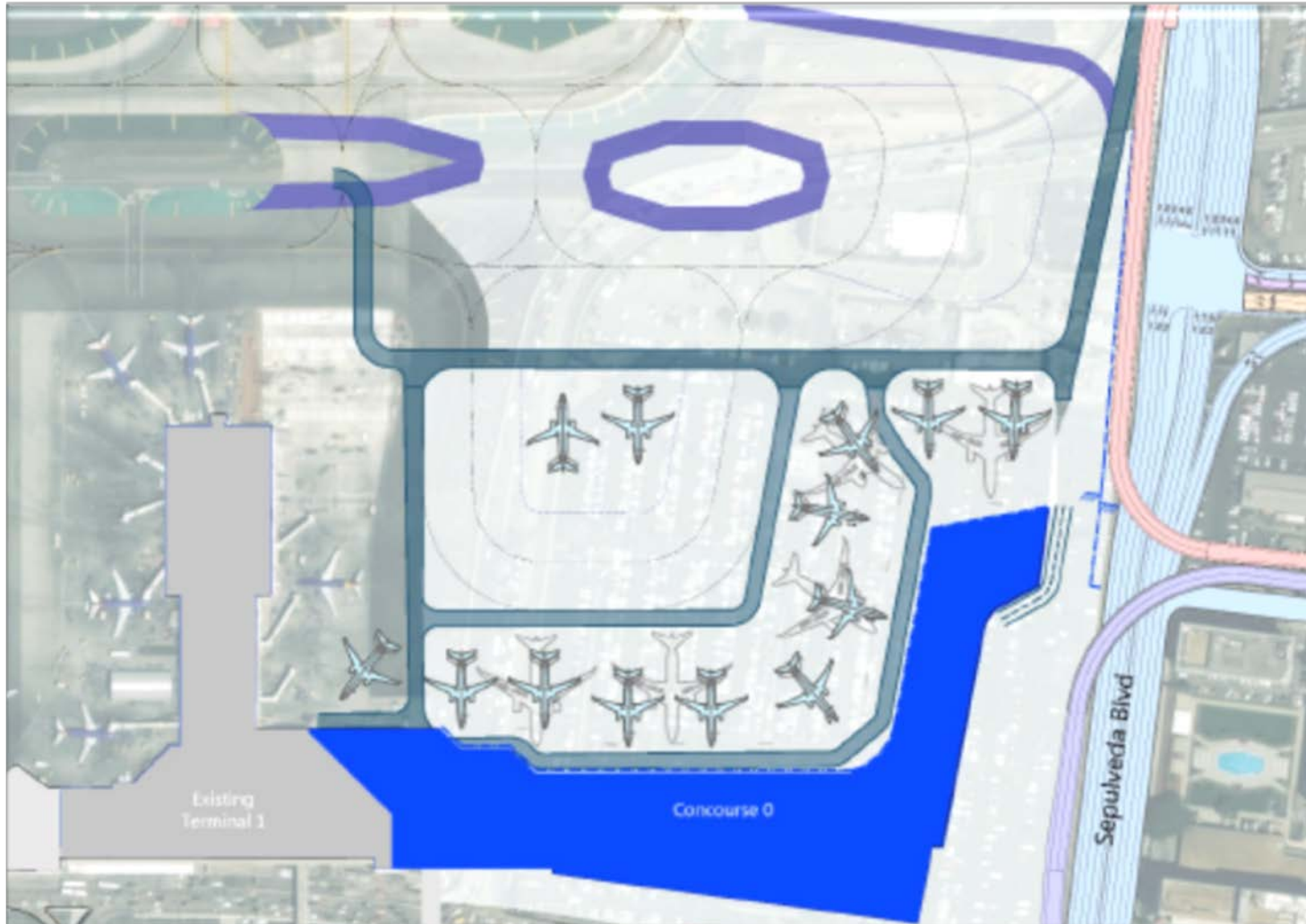


- ✈ Reconfiguration of taxiways/runways to meet current FAA design standards
- ✈ Improved runway exit configurations that enhance pilot visibility
- ✈ Decommissioning of taxiways that cross the runway “high-energy zone”
- ✈ Westerly extension of Taxiway D at ADG VI standards for operational efficiency and to meet FAA standards
- ✈ Improvements to Taxiways C & D for new Terminals
- ✈ Relocation of Vehicle Service Roads

Terminal Improvements

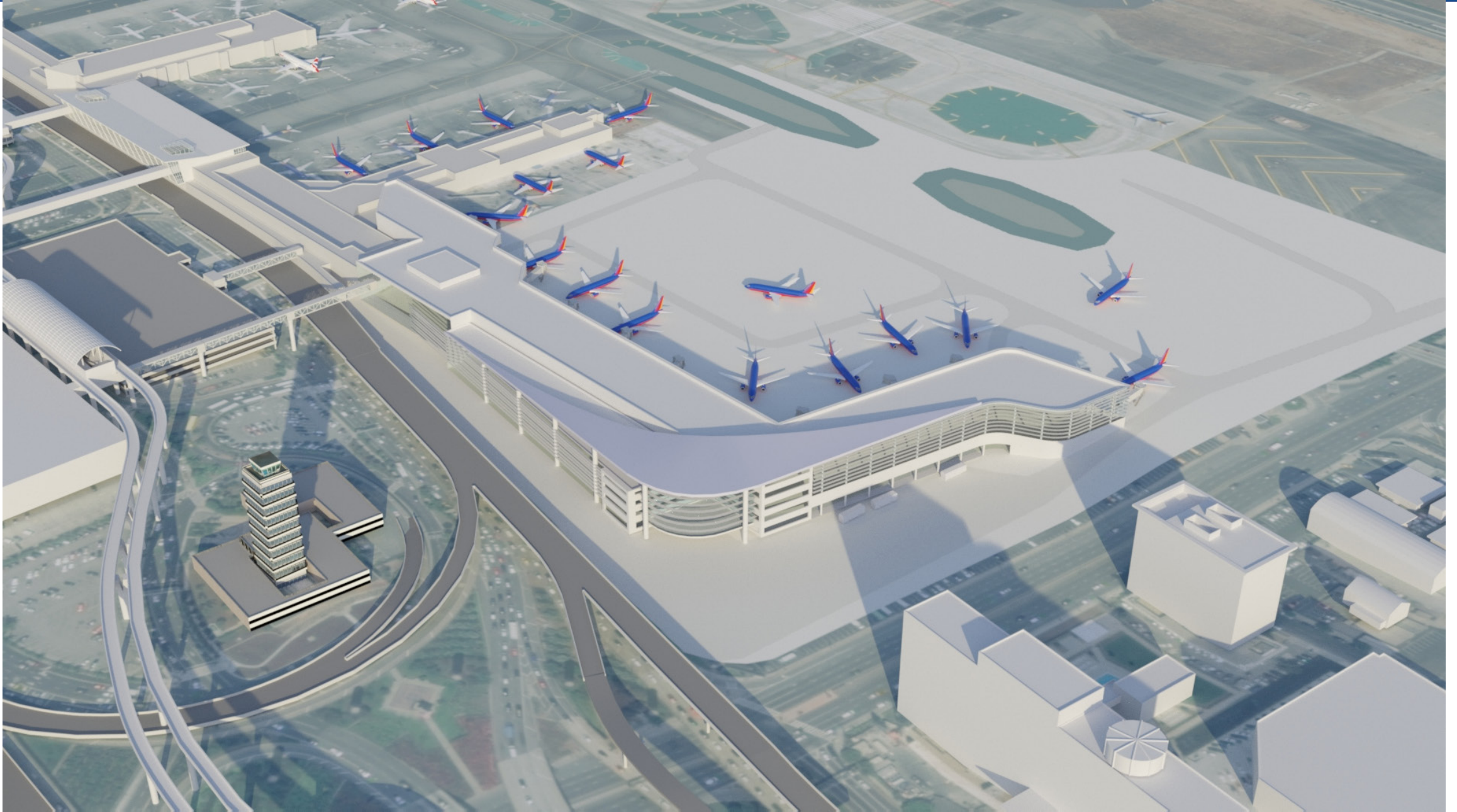


Concourse 0 Conceptual Site Plan



- ✈ 11 Gates (9 new) for narrowbody planes
- ✈ Accommodates up to 5 widebody planes
- ✈ 2 Remain-Overnight Aircraft parking positions
- ✈ Up to 1.2 million sf* (750,000 sf base)
- ✈ International (FIS) capability
- ✈ 4 levels (Ticketing, Concourse, Apron & Arrivals)
- ✈ Pedestrian corridor to new APM station
- ✈ No landside access – Passengers processed through Terminal 1

* With option for an Offices Levels and 20% design contingency

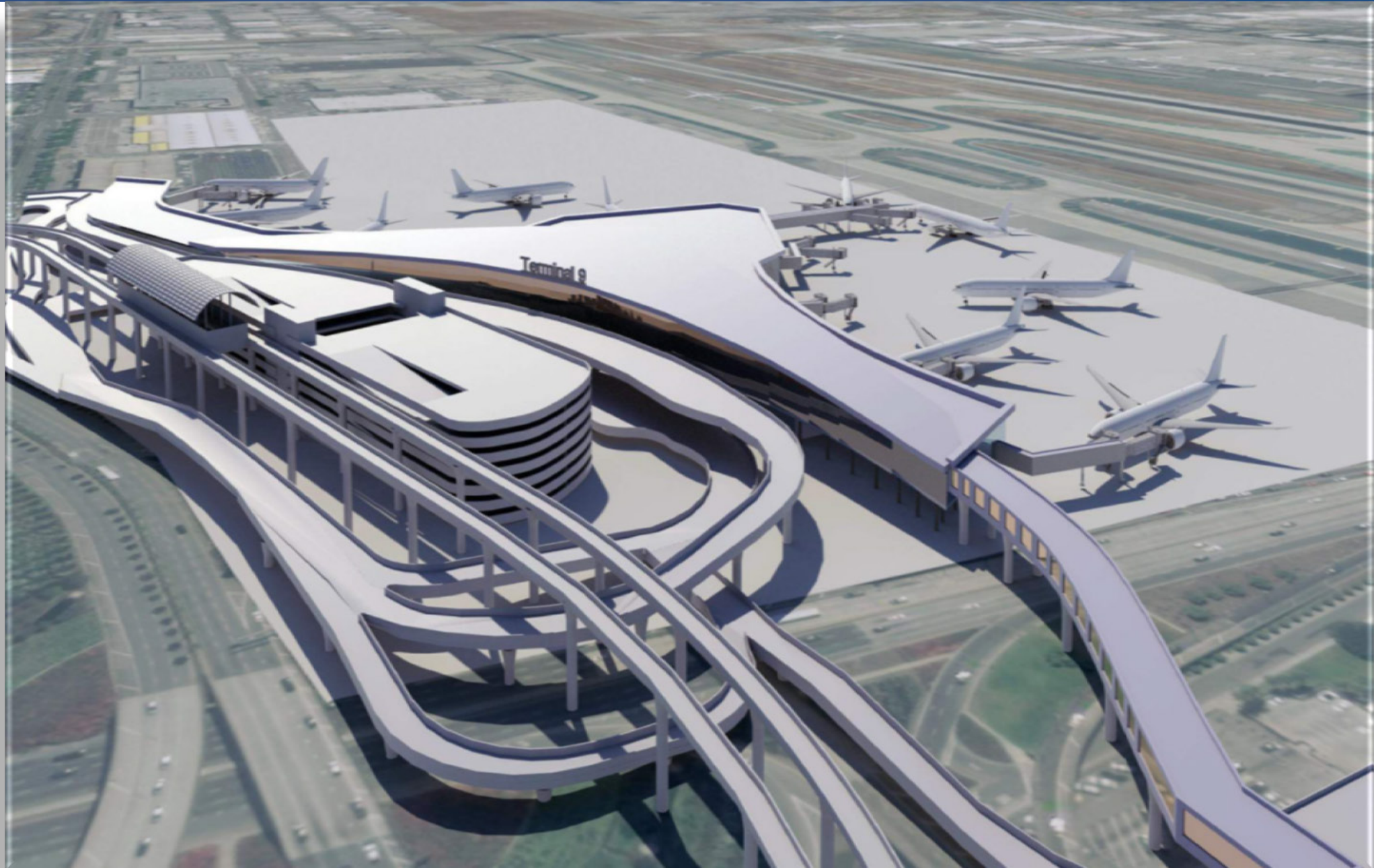


Terminal 9 Conceptual Site Plan



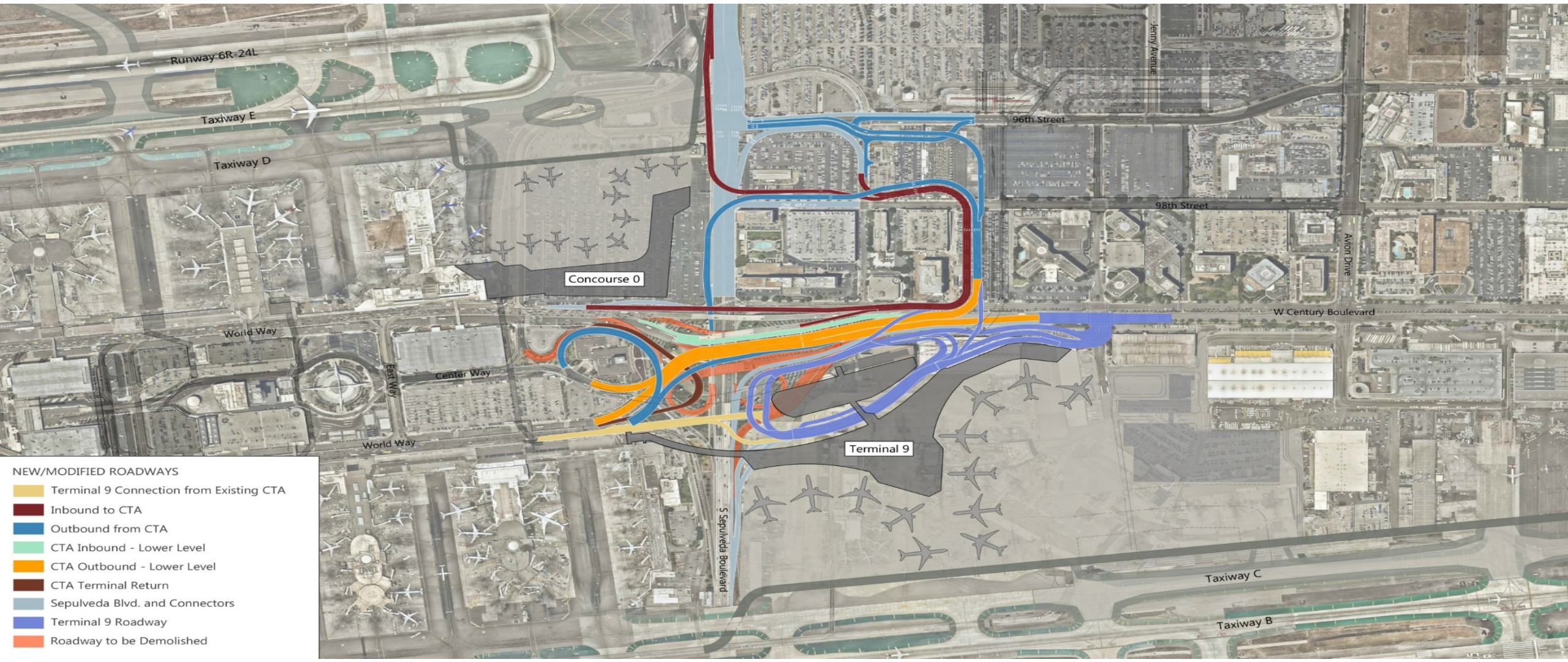
- ✈ 12 New Gates for widebody planes
- ✈ Up to 1.5 million sf* (1.2 million sf base)
- ✈ International (FIS) capability
- ✈ 4 levels (Ticketing, Concourse, Apron & Arrivals)
- ✈ Taxiway C improvement and easterly extension – ADG VI FAA design standards with 4-lane VSR
- ✈ Pedestrian corridor to new APM station
- ✈ Pedestrian corridor to Central Terminal Area (CTA) over Sepulveda
- ✈ Landside access to/from roadway system

* With pedestrian corridors and 20% design contingency



Landside Improvements

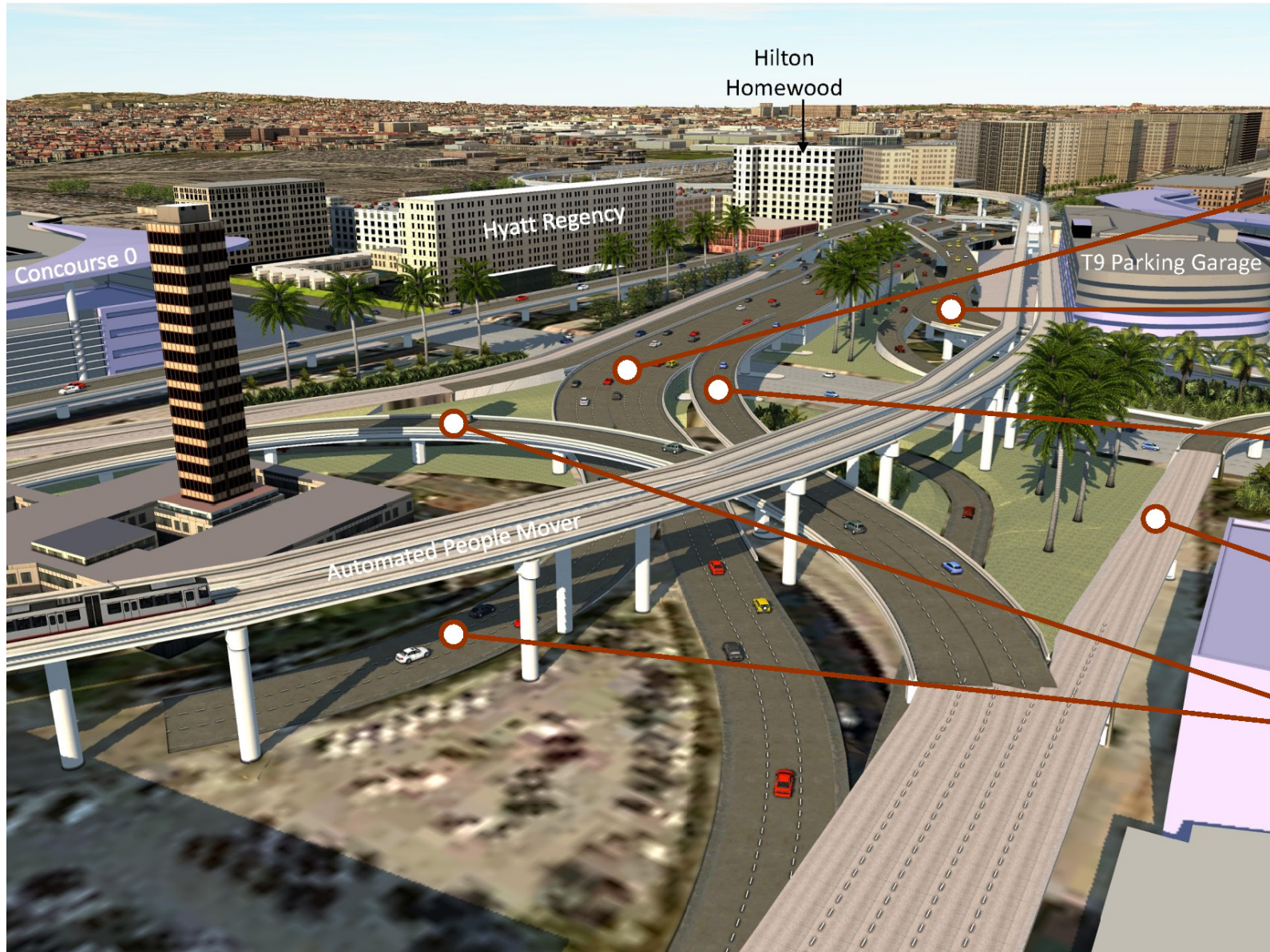




Looking South across roads T9 & C0



Looking East Exiting the CTA



Outbound from CTA
to Sepulveda Blvd

Circulation Road for
Terminal 9

Outbound from CTA
to Sepulveda Blvd

Ramp from CTA to
Terminal 9

Ramp from Upper
Level to Lower
Level for Outbound
to Sepulveda Blvd

Project Benefits



Benefits – Overall Project

Improves Passenger Experience

- ✓ Reduced wait times on tarmac
- ✓ Seamless transition between international & domestic flights
- ✓ Reduces on-ground travel by busing from remote gates
- ✓ Contact gates provide better passenger experience than busing from remote gates
- ✓ More seating, concessions & retail

Improves Community Experience

- ✓ Reduced traffic congestion on neighborhood streets
- ✓ Promotes sustainable practices – minimum LEED Silver certification
- ✓ Less aircraft idling reduces air pollutant emissions
- ✓ Connection to the APM & regional mass transit

Enhances Safety & Carrier Experience

- ✓ Increases safety & efficiency
- ✓ Reduced tarmac wait times
- ✓ Removes remote gates – less busing
- ✓ Improves taxiways
- ✓ Enhances aircraft movement

Increases Business Opportunities

- ✓ New Concessionaires (restaurants & shops)
- ✓ SBE & job opportunities during construction
- ✓ Local jobs & local business opportunities

Next Steps & Proposed Schedule



CEQA Process

